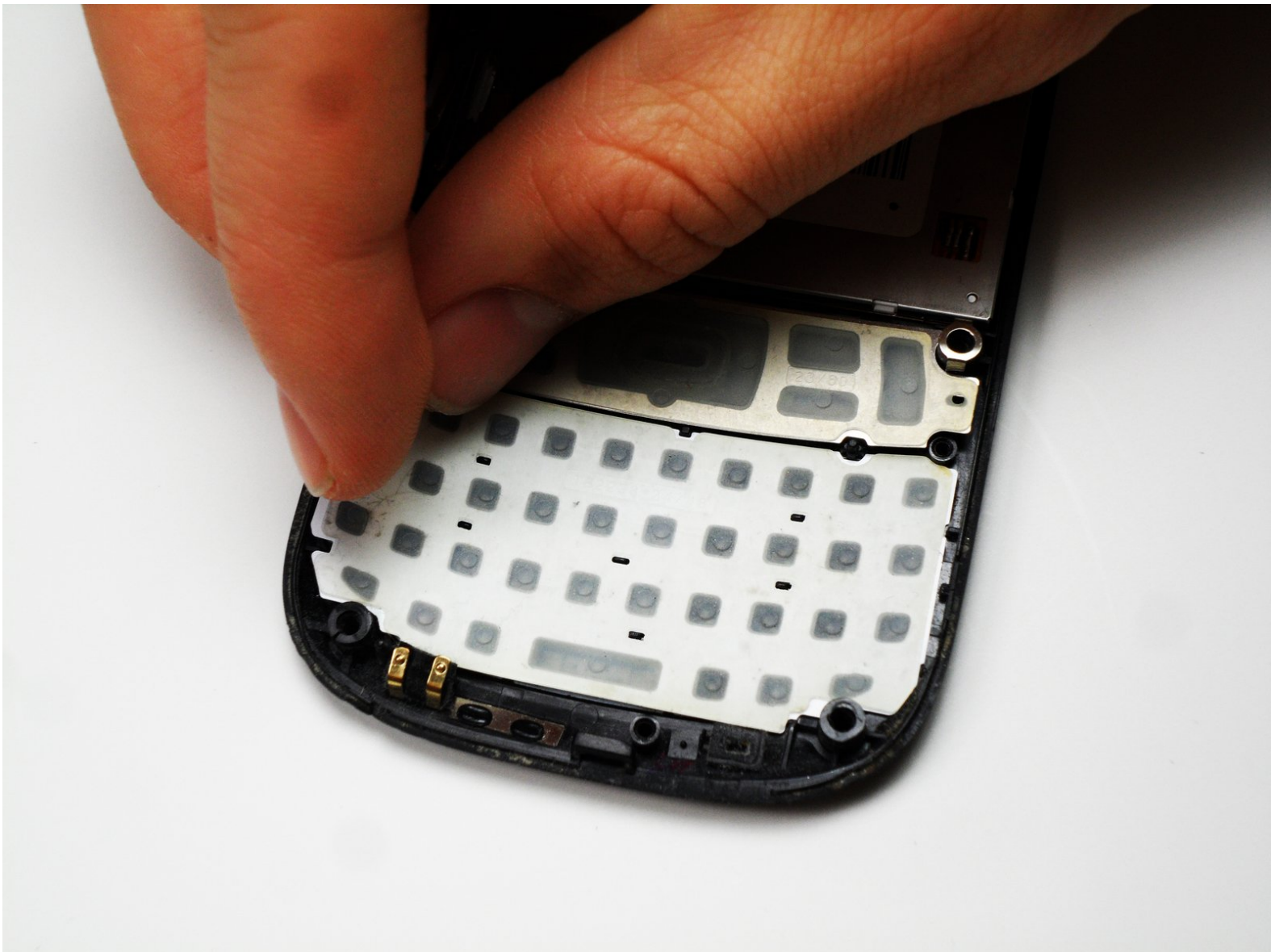




HTC Excalibur Keyboard Replacement

Replacing a broken or unresponsive HTC EXCA100 Keyboard

Written By: Ian Mitchell



INTRODUCTION

Replacing a broken or unresponsive HTC EXCA100 Keyboard



TOOLS:

- [Phillips #00 Screwdriver](#) (1)
- [Spudger](#) (1)
- [T6 Torx Screwdriver](#) (1)
- [Tweezers](#) (1)

Optional

Step 1 — Logic Board



- Remove the rubber screw covers. If needed, use a thin object to help pry them off. There should be two of them on top of the phone. Skip this step if already removed.
- Pry loose the metal cover near the camera lens, circled in the picture.

Step 2



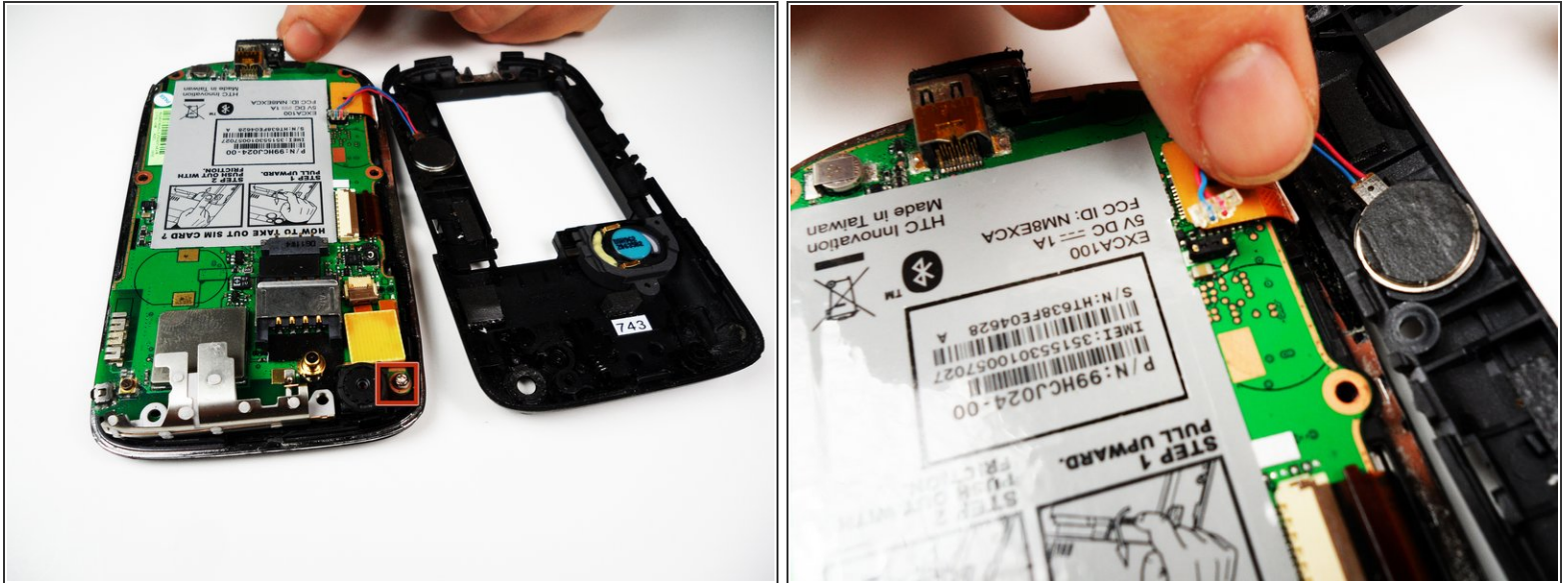
- Remove the battery cover.
- Gripping the battery by the bottom, lift and remove it from the phone.

Step 3



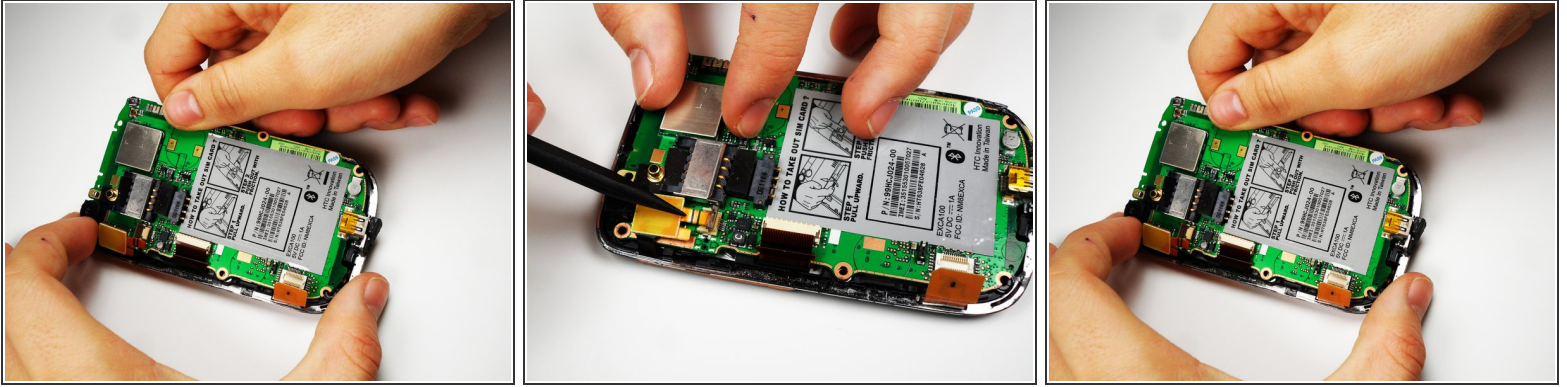
- After removing the rubber stoppers on top, there should be six exposed screws. Remove these using the T6 screwdriver.
- Next, use the spudger to loosen the case underneath the shiny metal edge. Go all the way around the phone until completely loosened.
 - ⓘ The case is superglued on and will not permanently damage the phone when removed, but you should still use caution.
- After loosening the case, remove it.
 - ⚠ There is a wire that connects both the top and bottom of the case. If you are not careful when removing the case, you might snap the wire.

Step 4



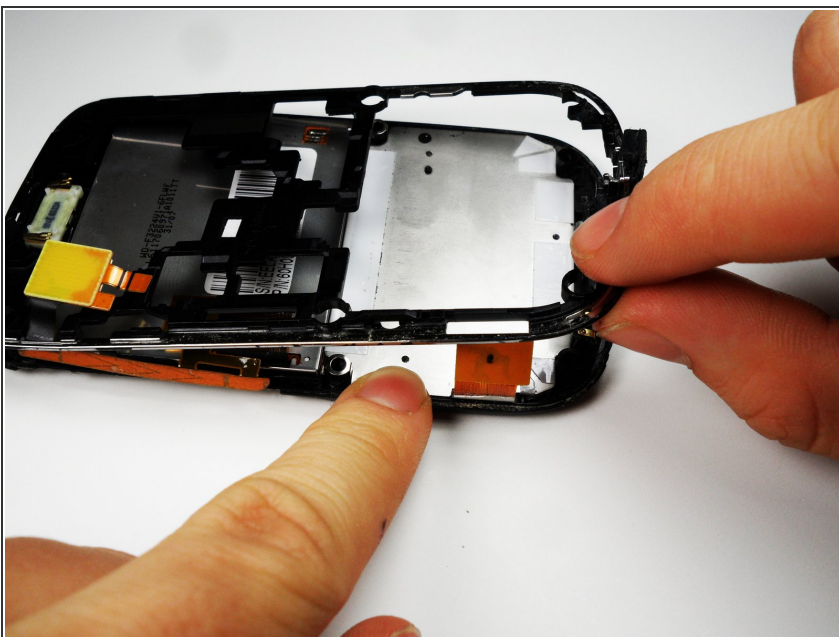
- Remove the one remaining screw in the logic board.
- Unclip the wire that connects the back of the case to the logic board.

Step 5



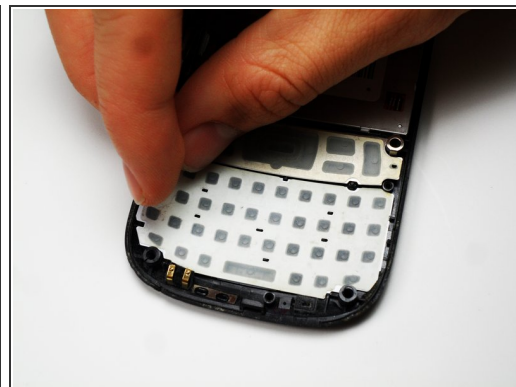
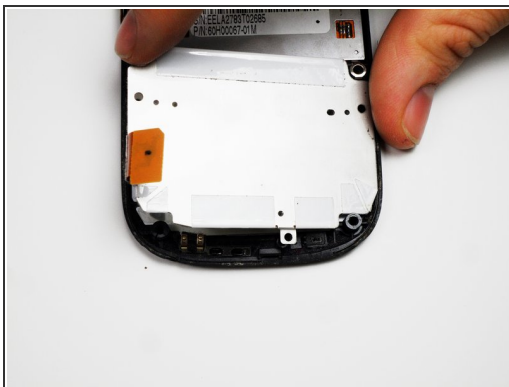
- On the left side of the phone, there are three copper colored clips.
 - Unclip the bottom clip, thread the middle one through the logic board, and pull the top one out gently.
- You can then lift the logic board out of the phone.
 - ⓘ Do this at an angle, lifting the side to the right of the SIM card instructions.
- ⚠ One of the strips is attached to the front of the case, and goes through the logic board. Be careful not to break this piece.

Step 6 — Keyboard



- Remove the metal frame. Slip out the copper clips still attached to the bottom frame from the frame carefully.

Step 7



- Remove the metal backing to the keyboard using Phillip 00 screwdriver to remove the 3 screws.
- After the screws are removed, take off the back cover of the keyboard.
- You can now peel off the keyboard, and replace it. After the new keyboard is in place, reassemble the device.

To reassemble your device, follow these instructions in reverse order.