



VTech Kidizoom Action Cam Lens Replacement

Use this guide to replace your broken camera lens so you can continue to take pictures clearly.

Written By: Anthony Teresi



INTRODUCTION

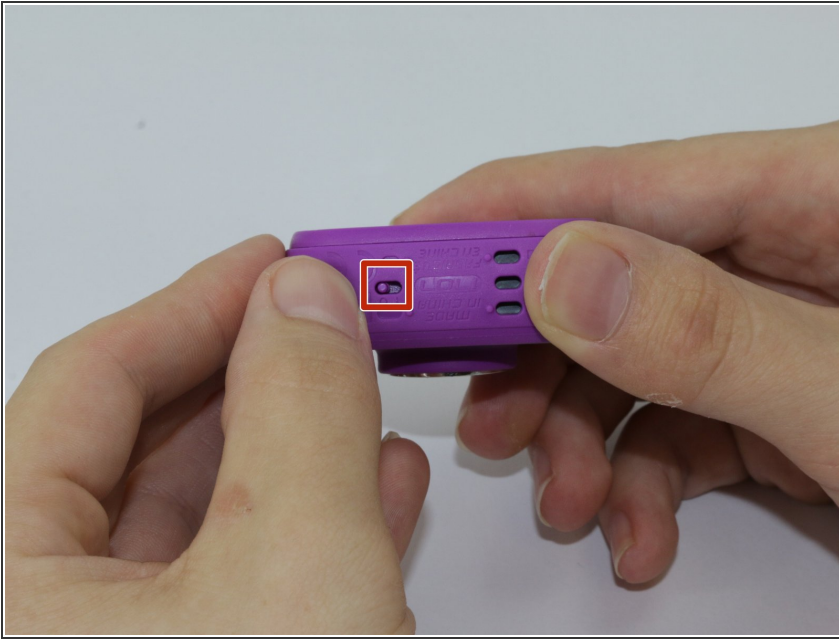
Exercise caution when removing the camera lens's connecting ribbon , as any excessive pulling can damage the motherboard. Otherwise, the camera lens is one of the quickest replacements, as it only requires light unscrewing, prying, and re-applying hot glue.



TOOLS:

- [Phillips #0 Screwdriver](#) (1)
 - [iFixit Opening Tools](#) (1)
 - [Glue Gun](#) (1)
 - [iOpener](#) (1)
-

Step 1 — Display Assembly



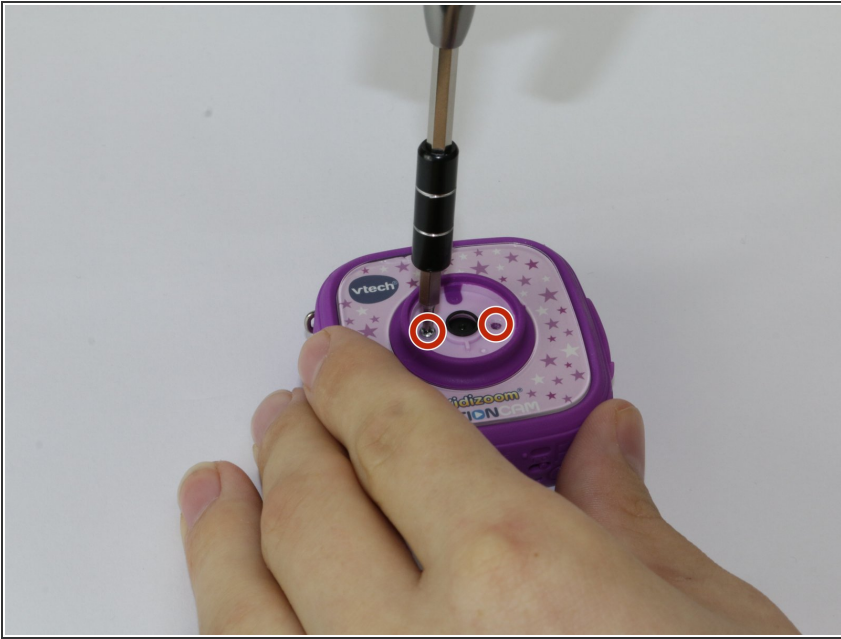
- ⚠ Make sure that the master power switch is set to the (O) position.

Step 2



- Using a plastic opening tool, gently pry off the circular plating over the camera lens.
- ⓘ The circular plating is held by a mild adhesive. It will not be necessary to replace this adhesive during the reassembly process.

Step 3



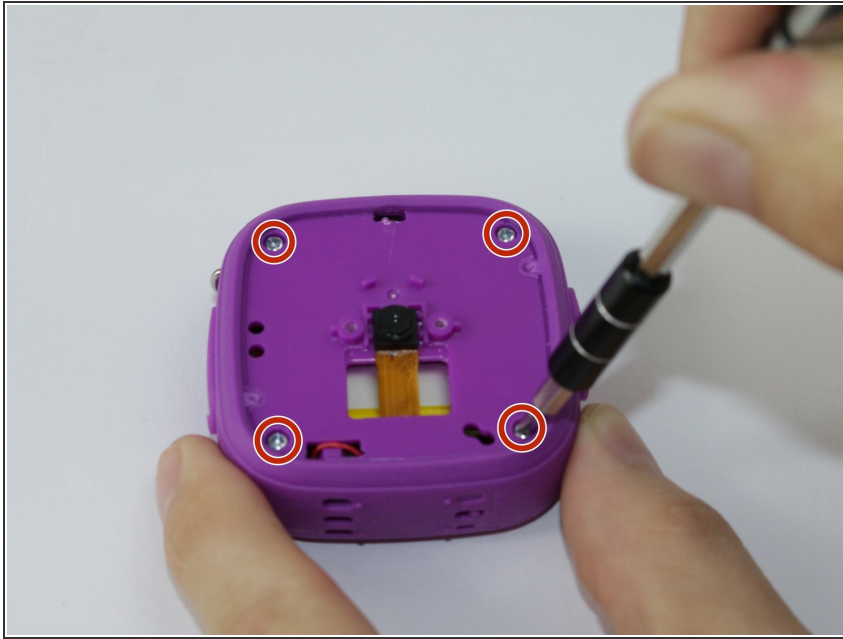
- Use a #0 screwdriver to remove the two 2.5mm Phillips head screws located on the second layer of plating.
- Remove the second layer of plating previously held down by the screws by gripping it with your fingers and pulling upward.
- ⓘ As there will be many screws being removed from the device, we recommend using a magnetic device such as the [iFixit Magnetic Project Mat](#).

Step 4



- Pry off the transparent plating and paper design using a plastic opening tool.

Step 5



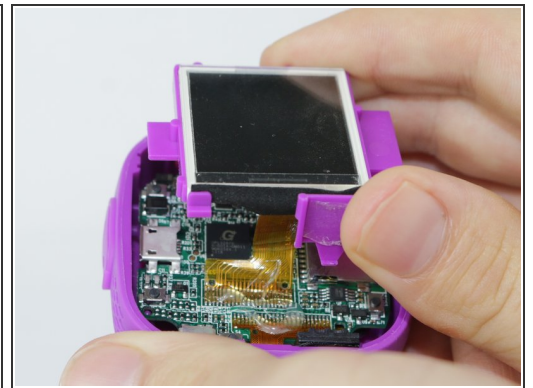
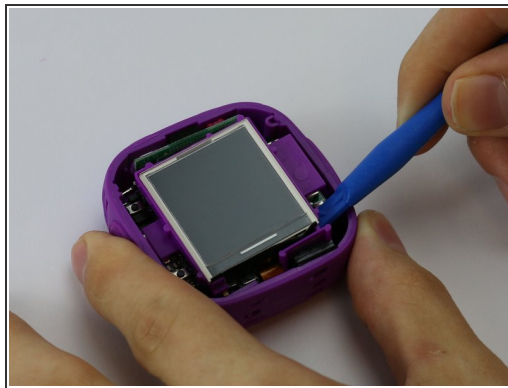
- Unscrew the (4) 2.5mm Phillips head screws from the third layer of plating using a #0 screwdriver.

Step 6




- Turn the camera around and gently remove the plating that surrounds the LCD screen by grasping it with your fingers and pulling away from the device.

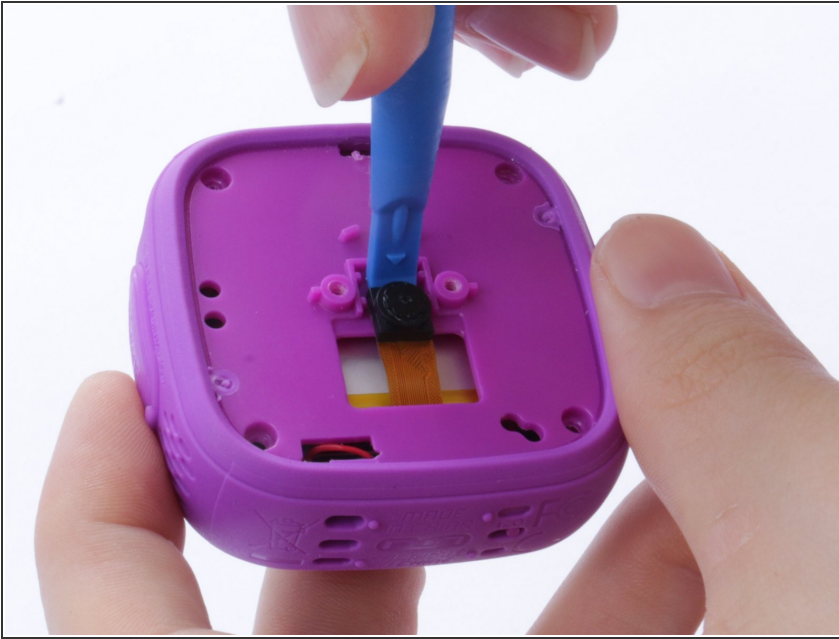
Step 7



- Use the plastic opening tool to lift the LCD screen, including the purple casing and set it aside, revealing the motherboard and connector ribbon.

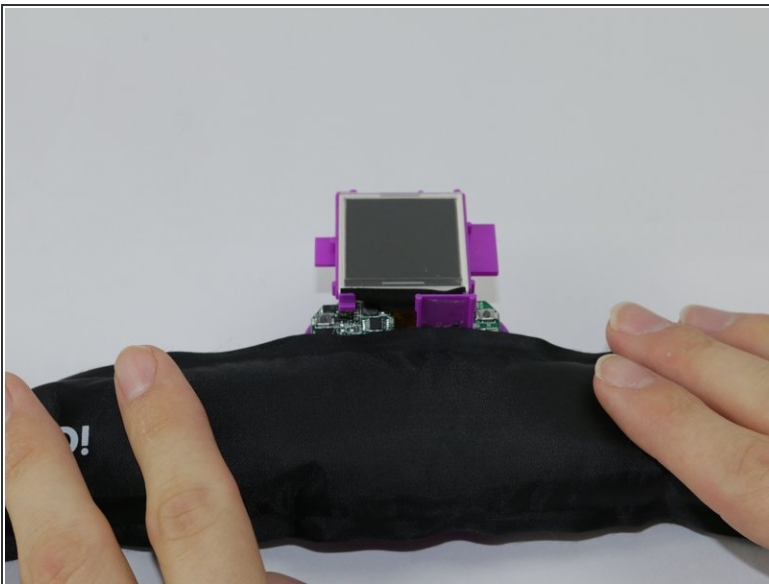
 Exercise caution while performing this step, as any excessive pulling may tear the connector ribbon from the motherboard.

Step 8 — Lens



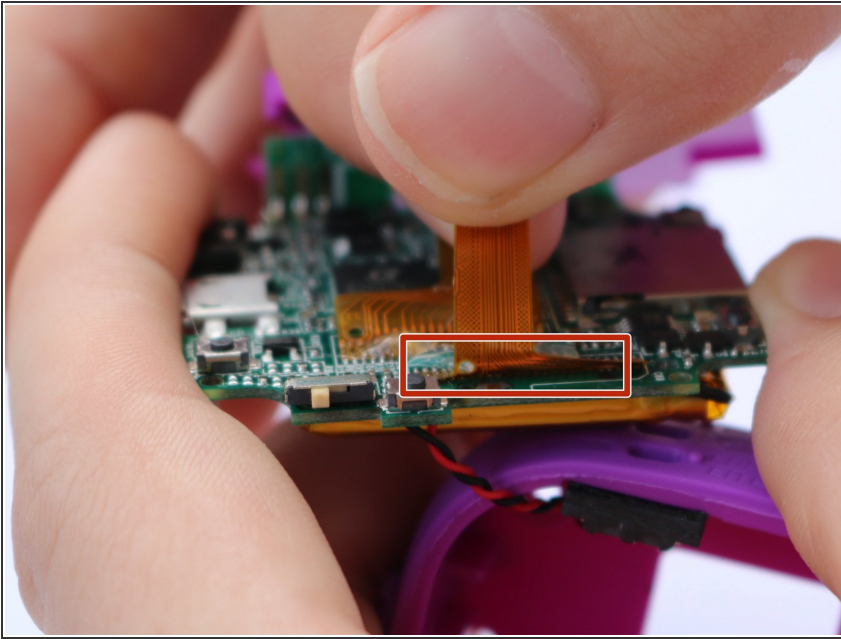
- Use the plastic opening tool to pry the lens from its holder.
- ⓘ This can be the final step before reassembling, but doing this before removing the ribbon makes the process easier.

Step 9



- Heat the iOpener tool, then press the iOpener tool onto the connectors to heat the glue on the connector ribbon.
- ⓘ If the iOpener tool is not available, use a hair dryer to heat the glue on the connector ribbon and then use a Q-tip dabbed in Isopropyl alcohol to dab the heated glue.

Step 10



- Gently peel the connector ribbon being held down by the heated glue until it is completely removed.
- ⚠ Be cautious of very hot glue when peeling the connector ribbon off of the motherboard
- When connecting the new camera lense, press the new connector ribbon to the original ribbon's position.

To reassemble your device, follow these instructions in reverse order.