



# Samsung Galaxy Mega USB Board Replacement

Replacement for a damaged charging port on the Samsung Galaxy Mega.

Written By: Aaron Fulton



# INTRODUCTION

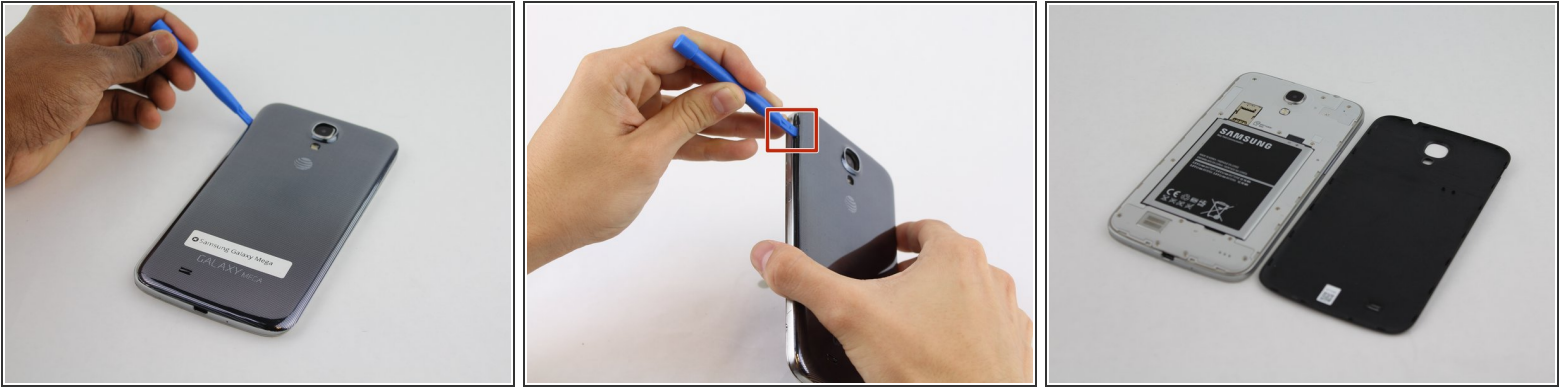
This guide instructs on how to replace a malfunctioning charging port circuit board.



## TOOLS:

- [Metal Spudger](#) (1)
  - [iFixit Opening Tools](#) (1)
  - [Phillips #000 Screwdriver](#) (1)
-

## Step 1 — Battery



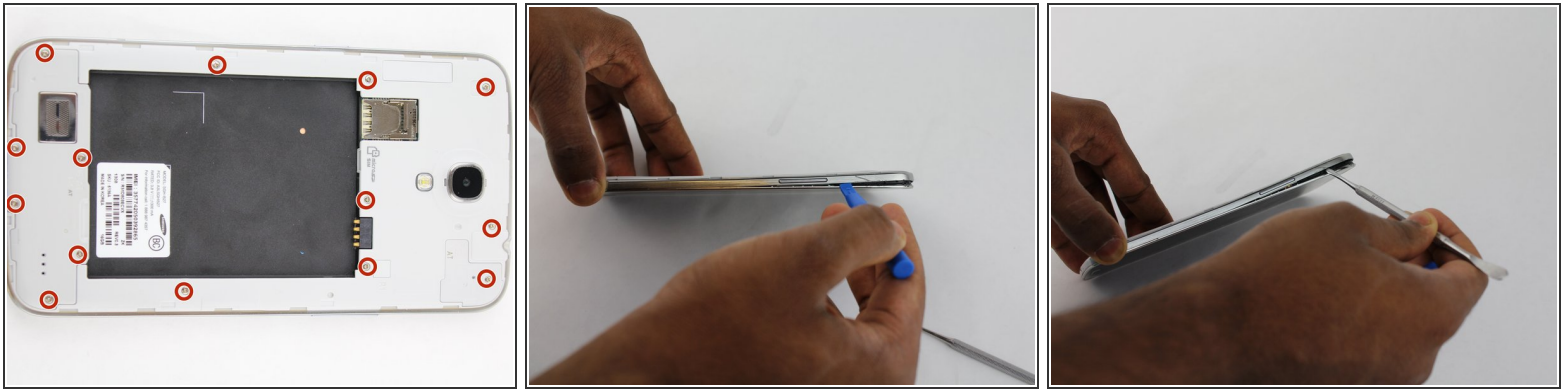
- Before starting, ensure device is completely turned off.
- On the back of phone, locate the slot on the top left corner.
- Insert plastic opening tool or fingernail and pull up on the back plate.
- With the corner released, slide your finger around the device between the back plate and the phone to release connectors.

## Step 2



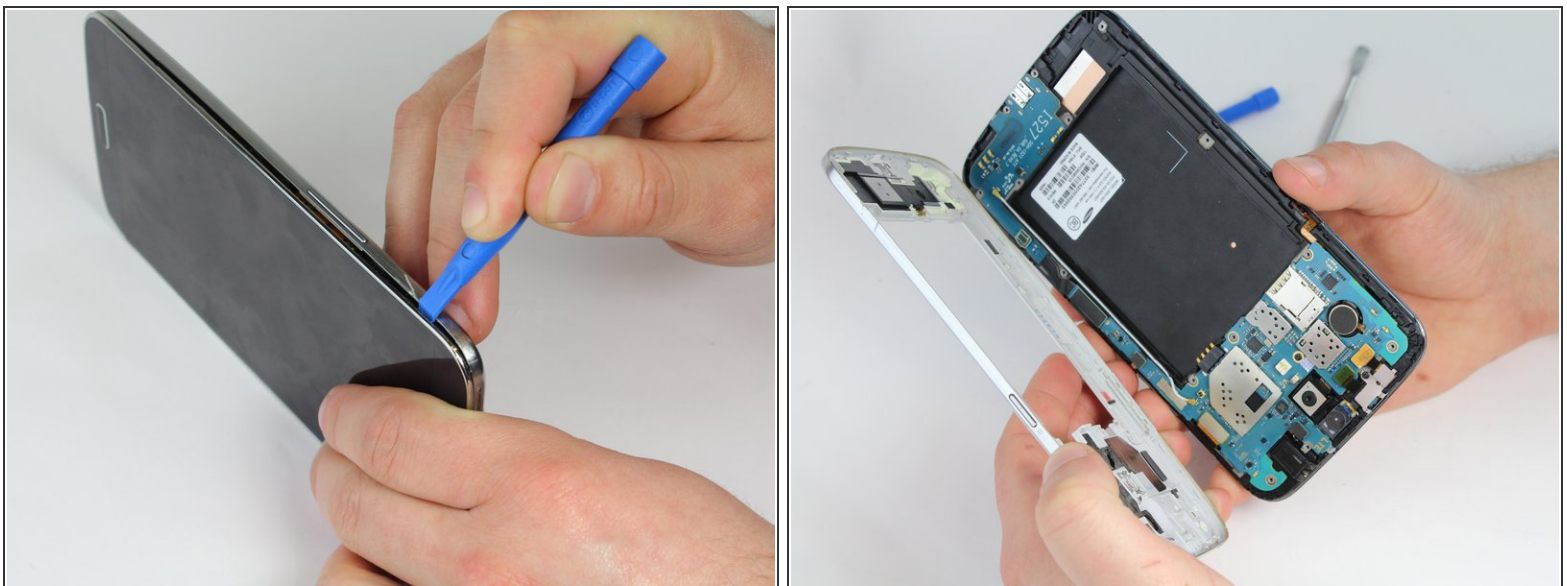
- Insert fingernail into the slot on bottom of battery and gently pull up.
- Remove the battery.

## Step 3 — Midframe



- Remove the 14 3.45 mm Phillips #000 screws from the assembly.
- Gently, insert plastic opening tool into seam above the volume buttons of your phone.
  - ⓘ You may substitute metal spudger for plastic opening tool to first start the opening of the seam. This may cause exterior cosmetic damage.

## Step 4



- Slowly slide plastic opening tool around the device to release all the connectors internal to the device.
- The device should easily come apart after the plastic opening tool is slid around the entire device.

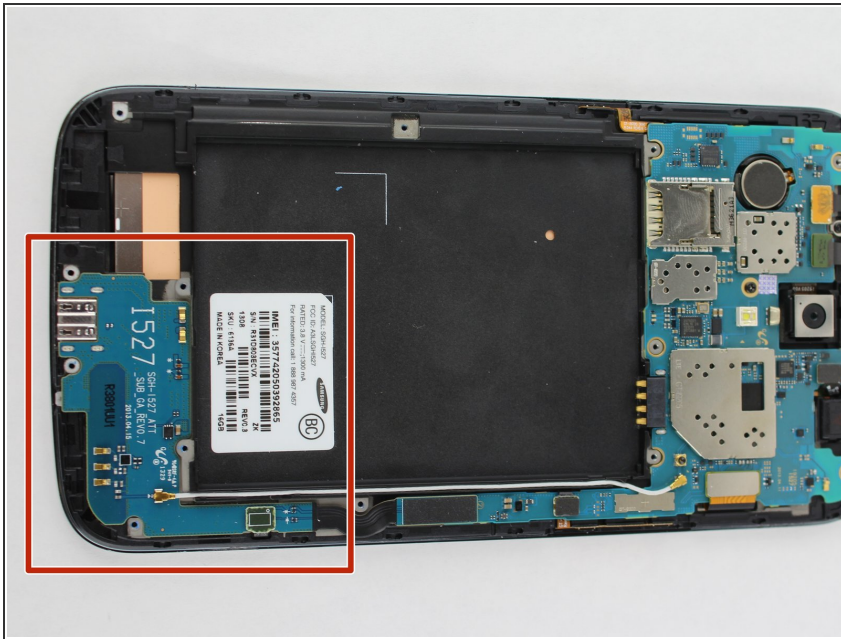
During reassembly, ensure volume and power buttons align properly.

This document was generated on 2020-11-28 04:58:45 AM (MST).



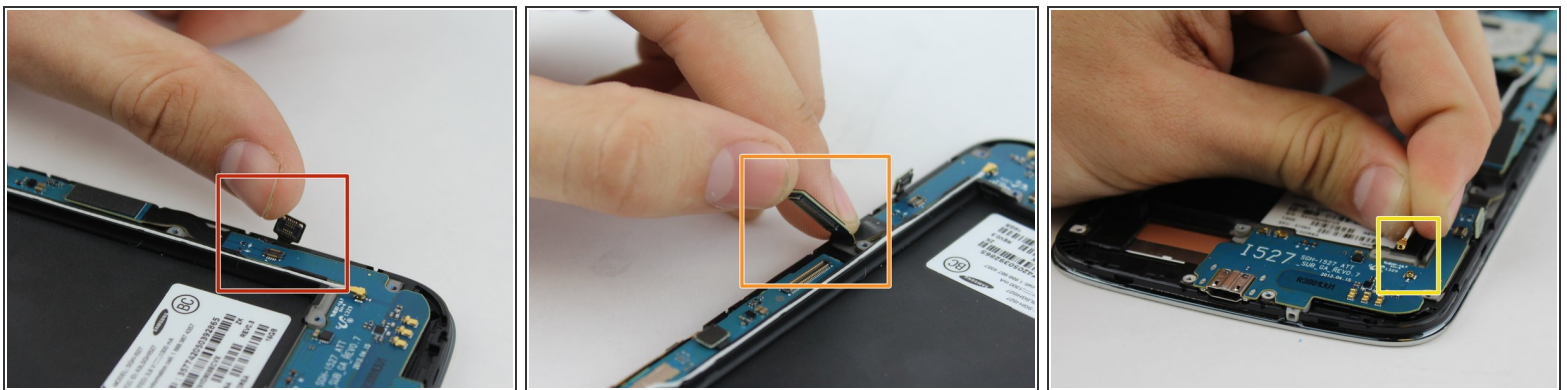


## Step 5 — USB Board



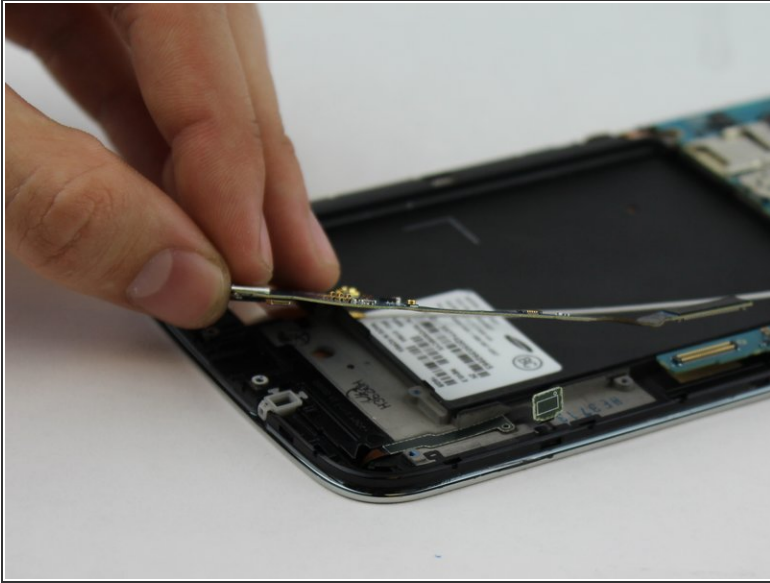
- This circuit board is the charging port assembly.

## Step 6



- Lift up on the clamp with your finger to disconnect the connector.
- Lift up on the clamp with your finger to disconnect the connection to the mother board.
- Grasp cable head and lift up to disconnect the cable head.

## Step 7



- Use your fingers to gently remove charging port.

To reassemble your device, follow these instructions in reverse order.