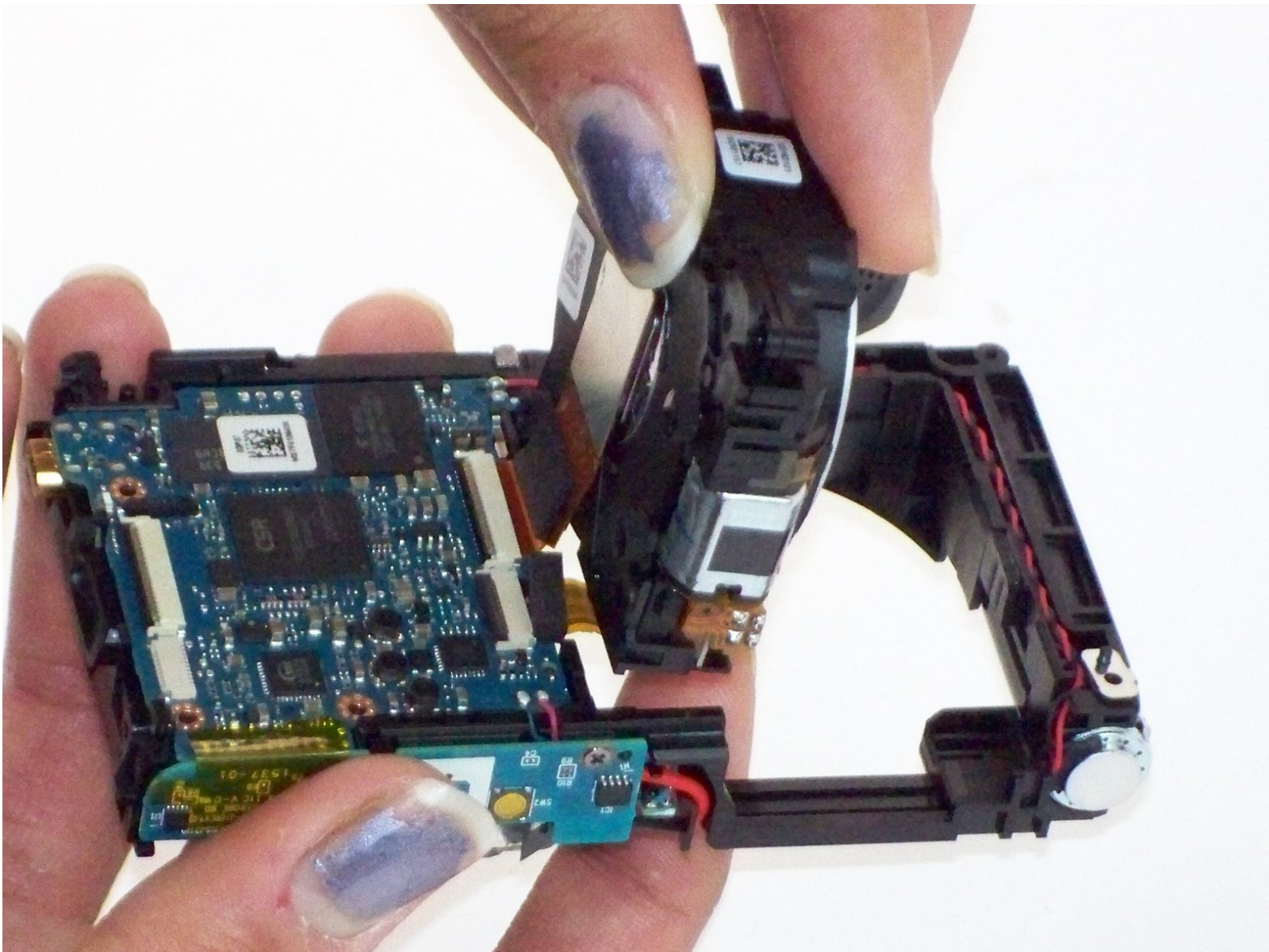




Sony Cyber-shot DSC-W800 Lens Replacement

Replace the malfunctioning Lens on your Sony Cyber-shot DSC W800. This should restore your device to its default operating condition.

Written By: Thomas Campo



INTRODUCTION

Some things to consider before you work on the Sony Cyber-shot DSC W800 to replace the Lens:

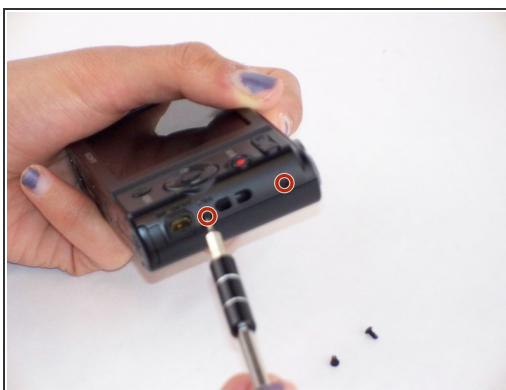
- The Lens is an integral part of the device and any improper handling can cause issues in other parts of the camera.
- Be cautious when removing ribbon wires.
- Be sure to keep track of all pieces that are taken apart.



TOOLS:

- [Phillips #000 Screwdriver](#) (1)
 - [Spudger](#) (1)
 - [Tweezers](#) (1)
 - [iFixit Opening Tools](#) (1)
-

Step 1 — Button Board



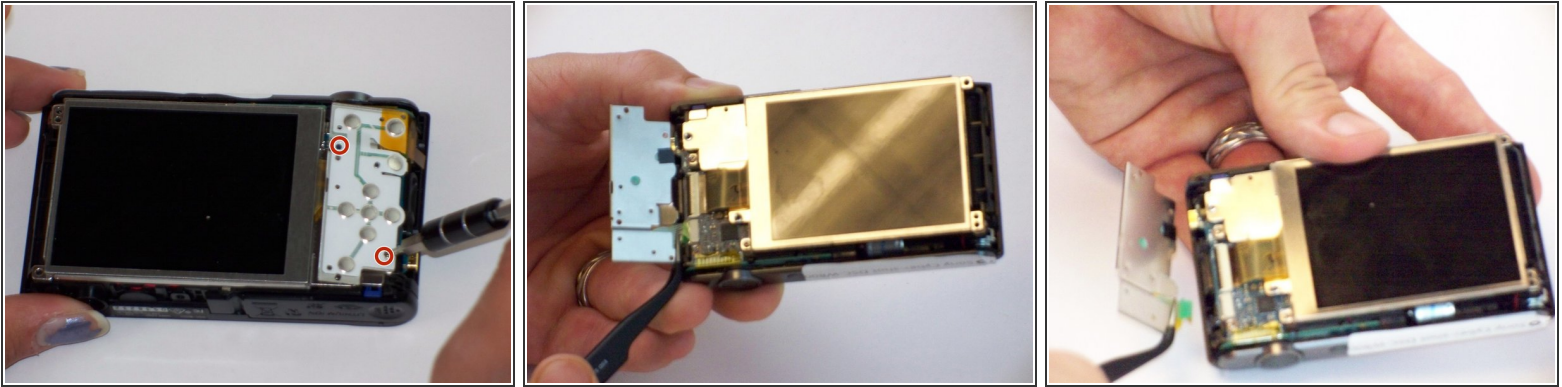
- Remove the five 4.0 mm Phillips #000 screws on the back panel.

Step 2



- Using the Spudger, remove the back panel from the device.
- The loose piece circled in the picture will most likely fall off the camera housing.

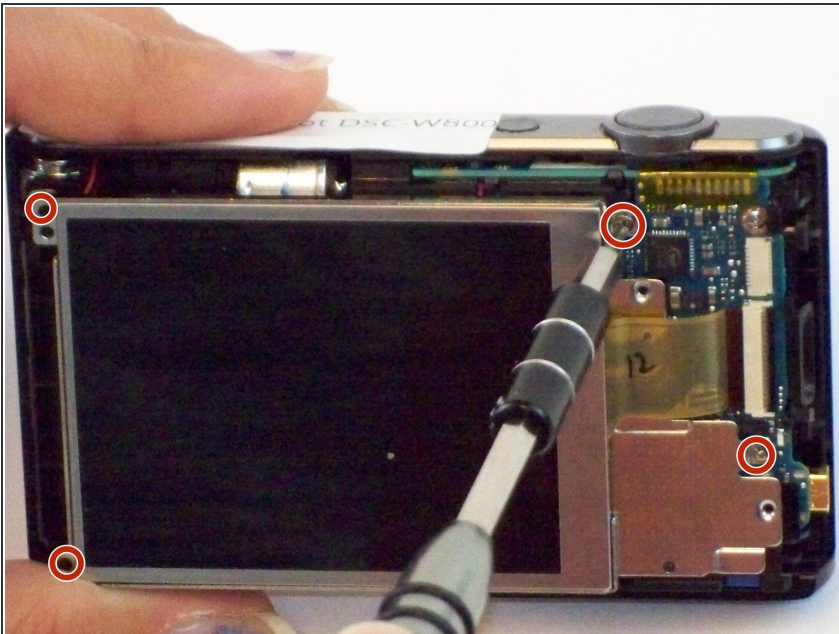
Step 3



- Remove the two 2.15mm Phillips #000 screws from the circuit board.
- Gently pull on the ribbon wire from ZIF connector with the tweezers to remove the button board.

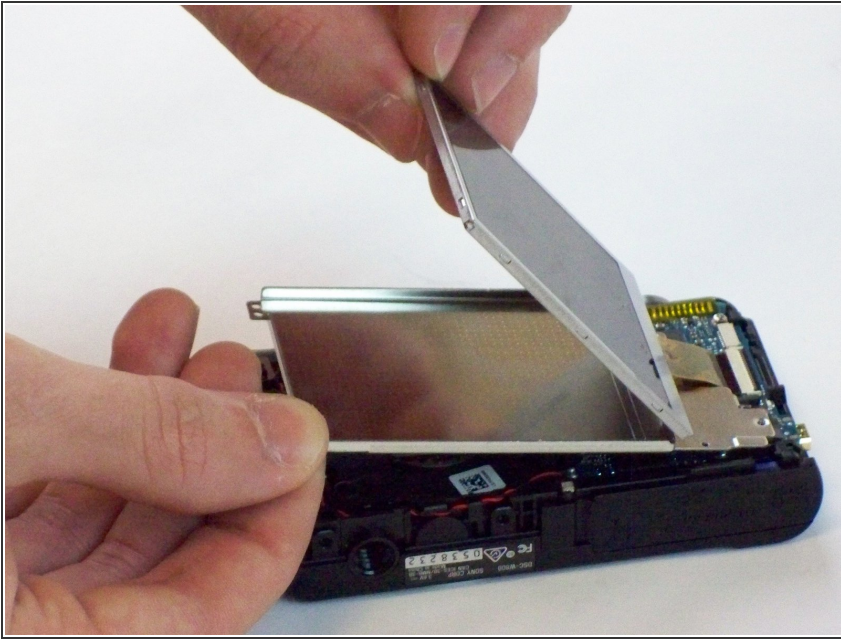
⚠ Ribbon wires can easily be damaged.

Step 4 — LCD Screen



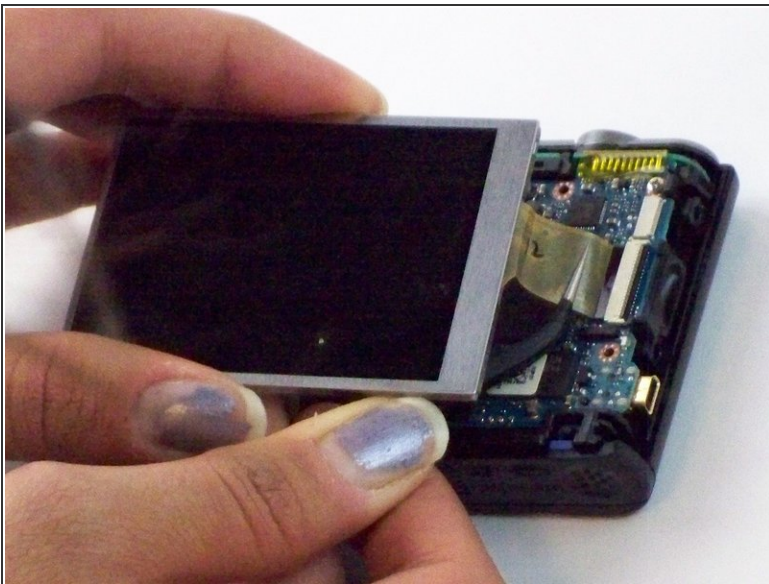
- Remove the four 3.75 mm Phillips #000 screws from the LCD back panel.

Step 5



- Lift the back panel and separate the LCD Screen by prying it up.
- Remove the back panel.

Step 6

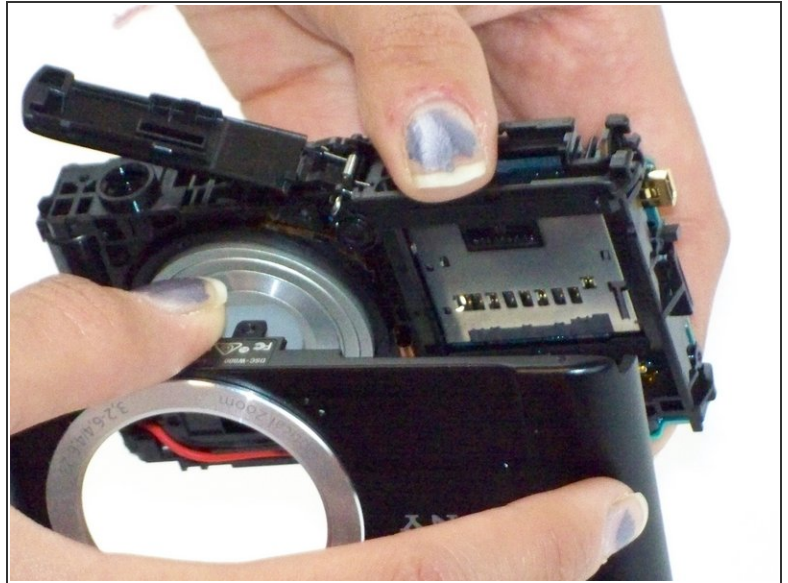
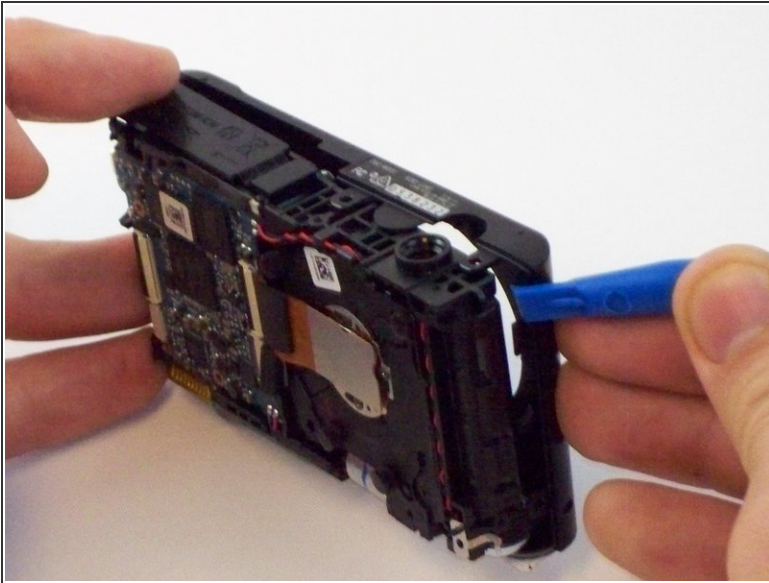


- Gently pull on the ribbon wire disconnecting from the ZIF connector (connecting the LCD screen to the motherboard) with the tweezers.



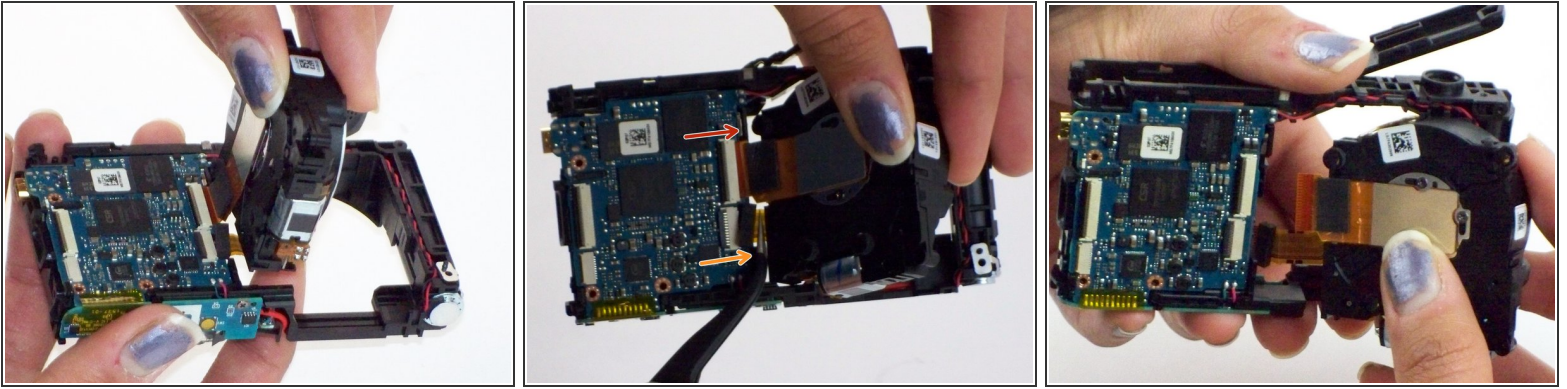
Ribbon wires can be easily damaged.

Step 7 — Lens



- With plastic opening tool, gently pry loose the front panel.
- Separate front panel from the camera housing.

Step 8



- Remove the lens housing by pushing it, from the front, through the housing and lifting it out.
- Gently pull on the large ribbon wire (connecting the Lens housing to the motherboard via ZIF connector) with the tweezers.
- Gently pull on the small ribbon wire (connecting the Lens housing to the motherboard) with the tweezers.

⚠ Be careful not to damage either of the ribbon wires.

To reassemble your device, follow these instructions in reverse order.