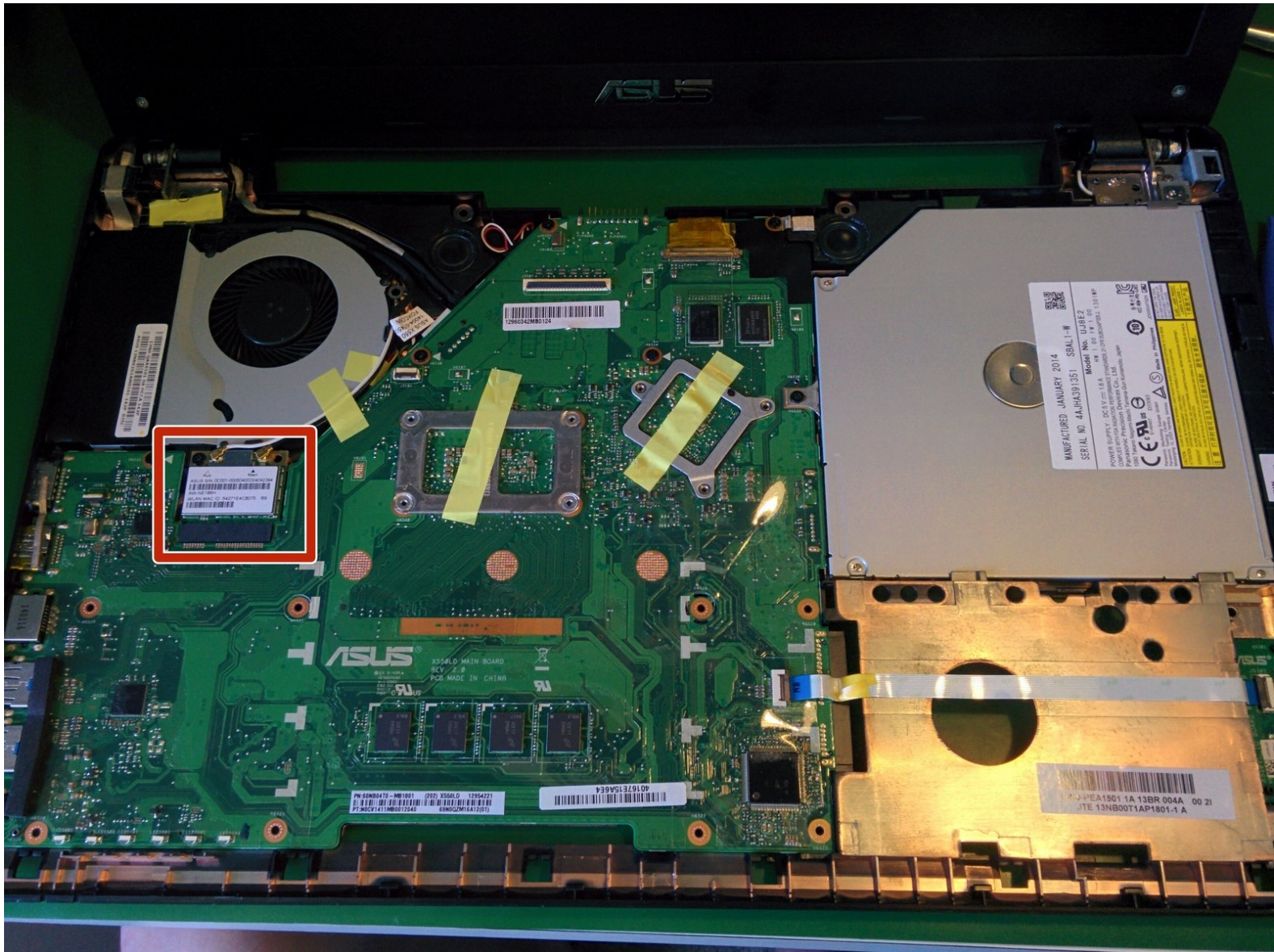




ASUS F550 Wifi Card Replacement

Written By: Ryan

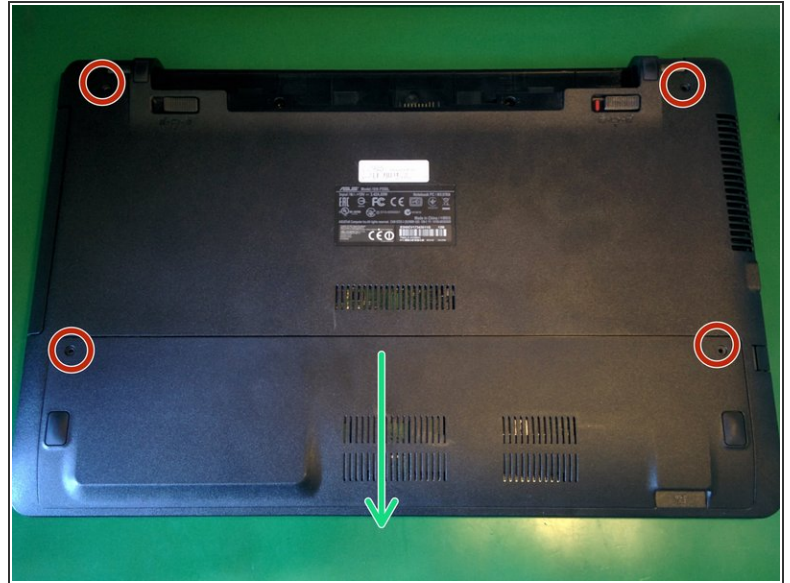




TOOLS:

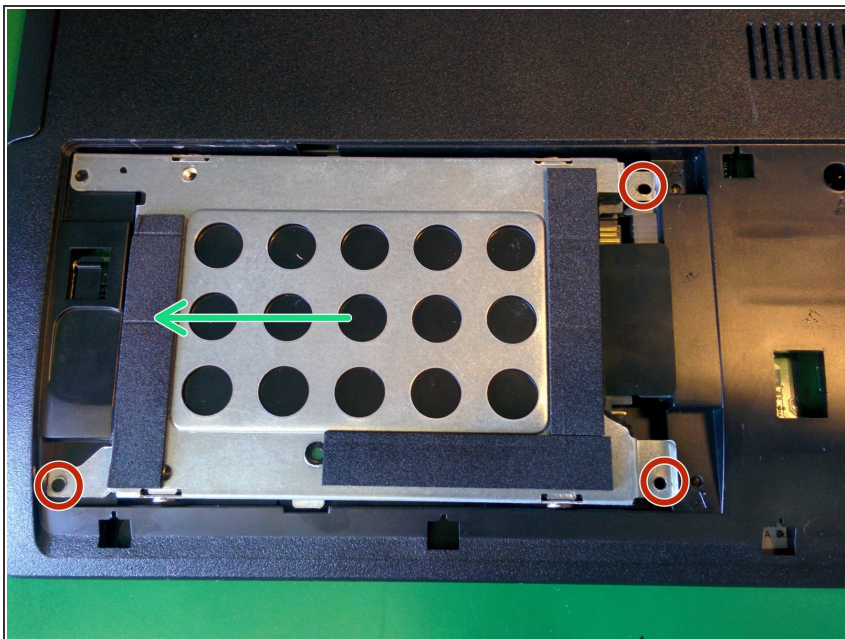
- [Phillips #0 Screwdriver](#) (1)
 - [iFixit Opening Tool](#) (1)
-

Step 1 — ASUS F550 HDD/Ram Cover Removal



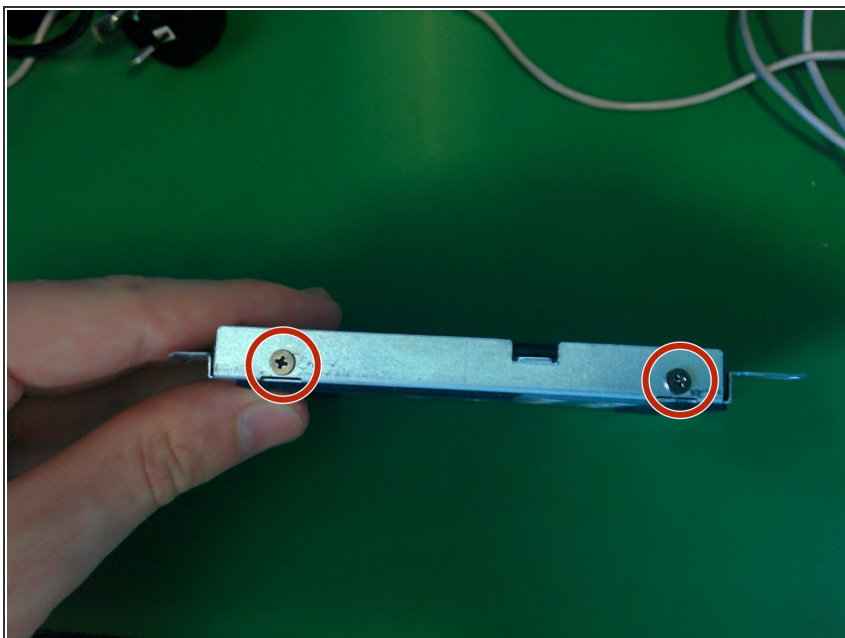
- Remove the battery, using release clips.
- ⓘ Ensure device has no residual power by attempting boot once battery is removed.
- Remove either 2 (or 4 for a full teardown) 12mm phillips screws, then removing the bottom cover to gain access to the HDD and RAM.
- Remove HDD and RAM cover

Step 2 — HDD



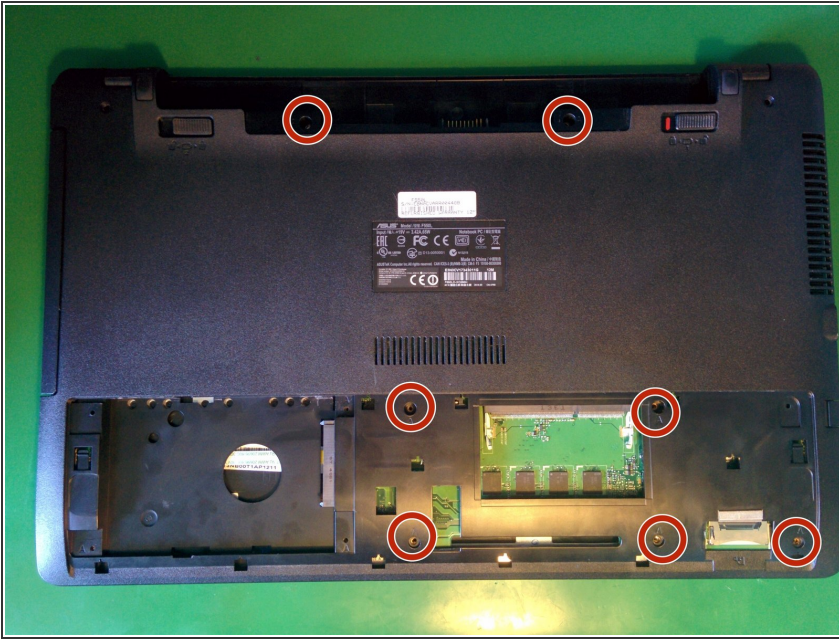
- Remove 3 5mm Phillips screws
- Slide HDD caddy back, remove using the black pull tab.

Step 3 — HDD Removal from Caddy



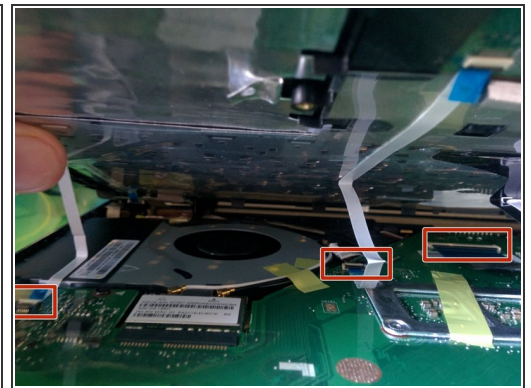
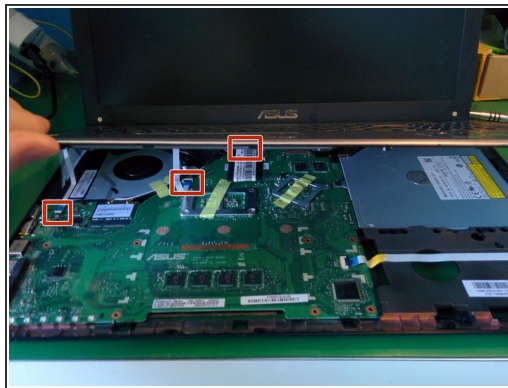
- Remove 4 Phillips screws, 2 per side
- Remove HDD from caddy.

Step 4 — Keyboard



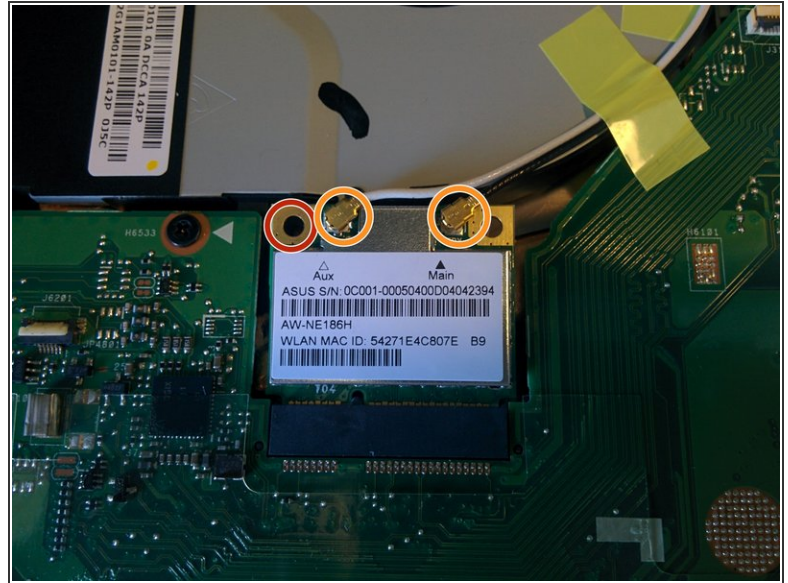
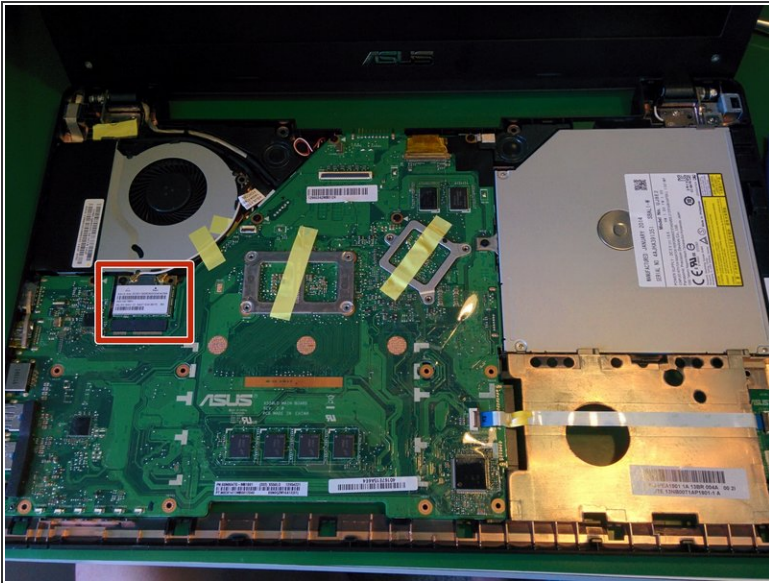
- Remove 7 5mm Phillips screws

Step 5



- Flip laptop and open lid. Separate the keyboard plate from the main housing, using a plastic prying tool. Being careful not to damage the LED indicators or other peripherals.
- Disconnect the LED, trackpad, and keyboard ribbon cables.
- The keyboard can now be removed

Step 6 — Wifi Card



- Locate Wifi Card
- Remove the antenna cables using a spudger tool.
- Remove the Philips screw The Wifi Card will pop up and should be easily removed.

To reassemble your device, follow these instructions in reverse order.