



Dymo LabelManager 280 Rear Case Replacement

Take apart the device to get to other components that need looking at.

Written By: Steven Nguyen



INTRODUCTION

This guide is suppose to help you open up the device. Do not do this unless certain that you need to check something.

TOOLS:

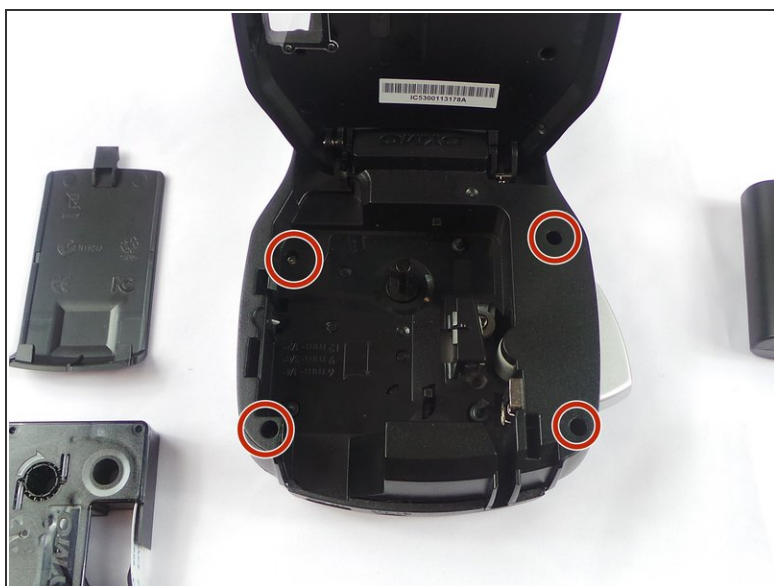
- [Phillips #0 Screwdriver](#) (1)
 - [Spudger](#) (1)
-

Step 1 — Rear Case



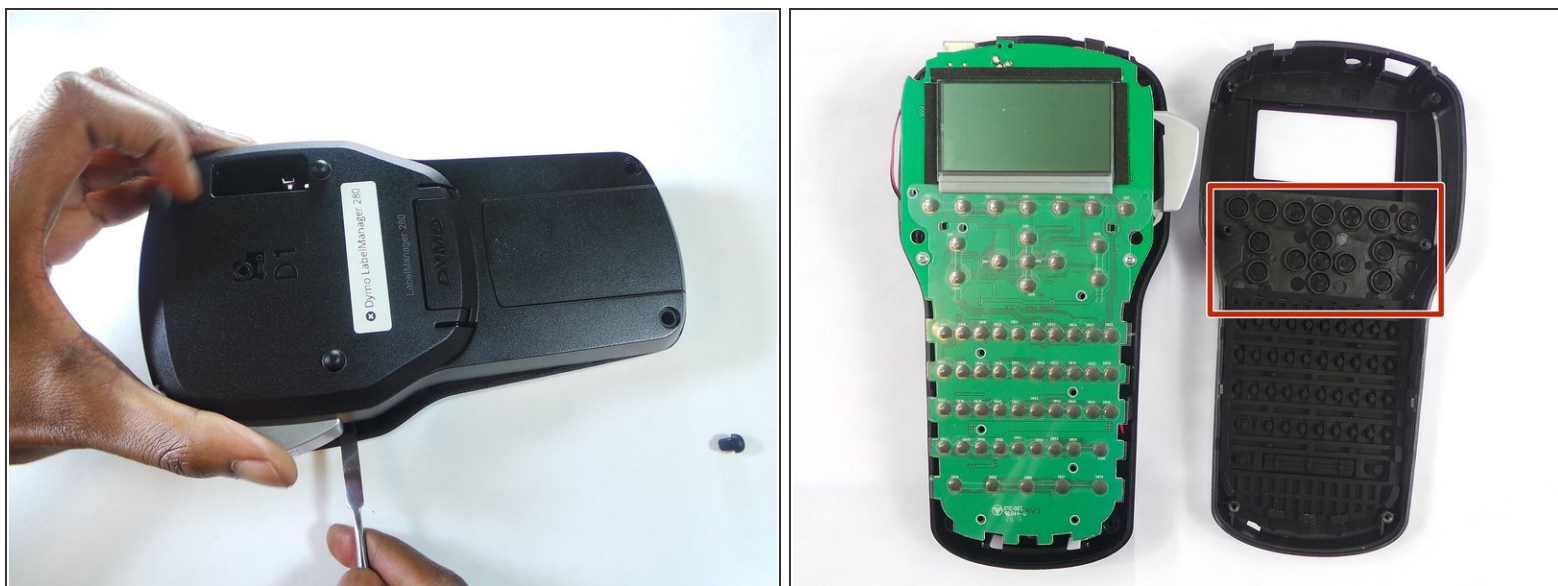
- Remove battery.
- Remove the label cassette.

Step 2



- Remove the 6 screws in the indicated places. These particular screws are 2mm x 8mm Phillips #0 head

Step 3



- Use the spudger to take apart the device by inserting it as shown in the picture and twisting it. This should be done all around the device to ensure the two parts split correctly.

⚠ The keys/buttons highlighted in the second picture fall out easily so be careful. Keep device faced down in order to keep them from falling.

To reassemble your device, follow these instructions in reverse order.