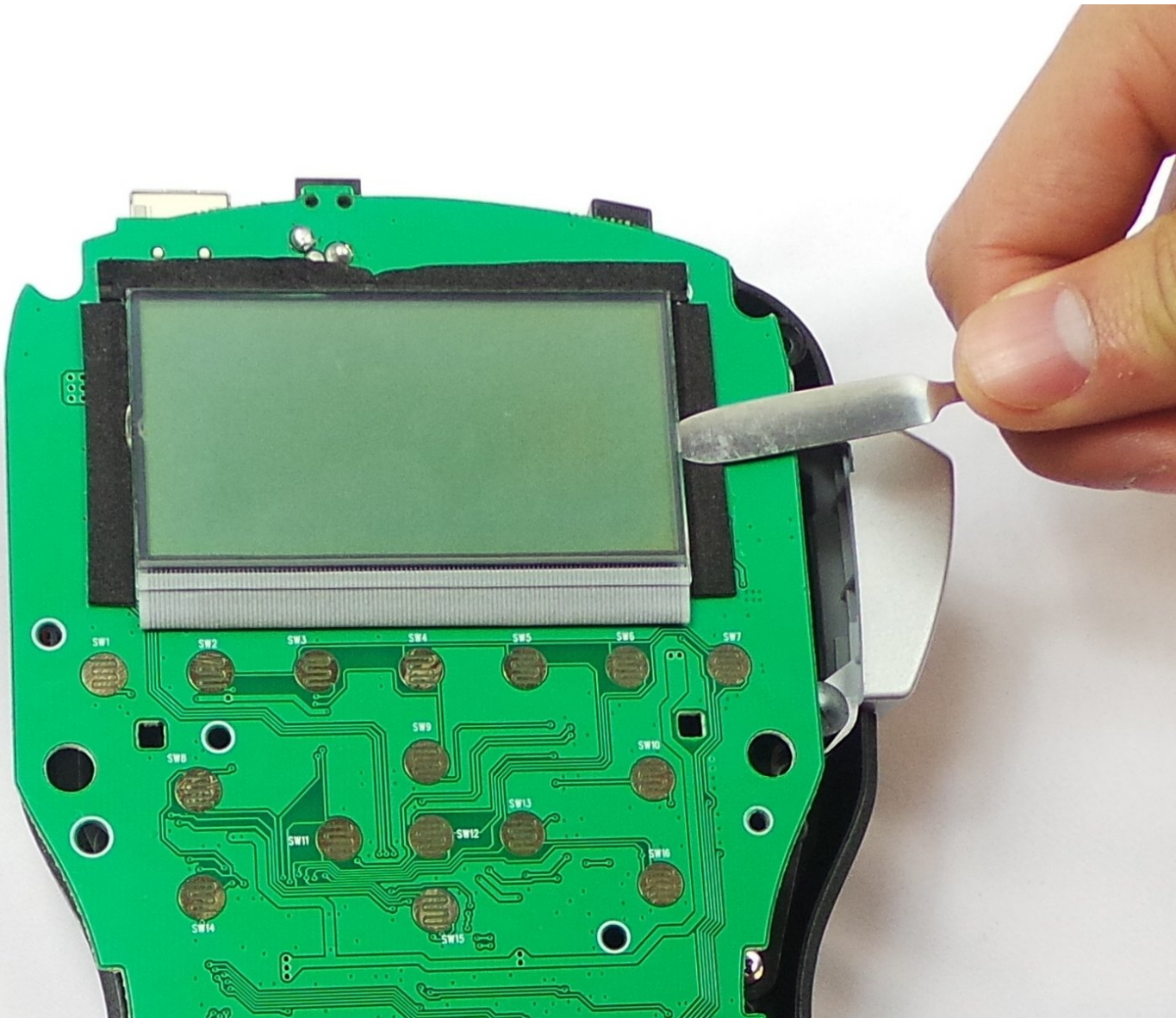




Dymo LabelManager 280 Screen Replacement

Replace the screen in order for it to work again.

Written By: Steven Nguyen



INTRODUCTION

This guide helps open the device and get to the screen to replace it.



TOOLS:

- [Phillips #0 Screwdriver](#) (1)
 - [Spudger](#) (1)
-

Step 1 — Rear Case



- Remove battery.
- Remove the label cassette.

Step 2



- Remove the 6 screws in the indicated places. These particular screws are 2mm x 8mm Phillips #0 head

Step 3



- Use the spudger to take apart the device by inserting it as shown in the picture and twisting it. This should be done all around the device to ensure the two parts split correctly.

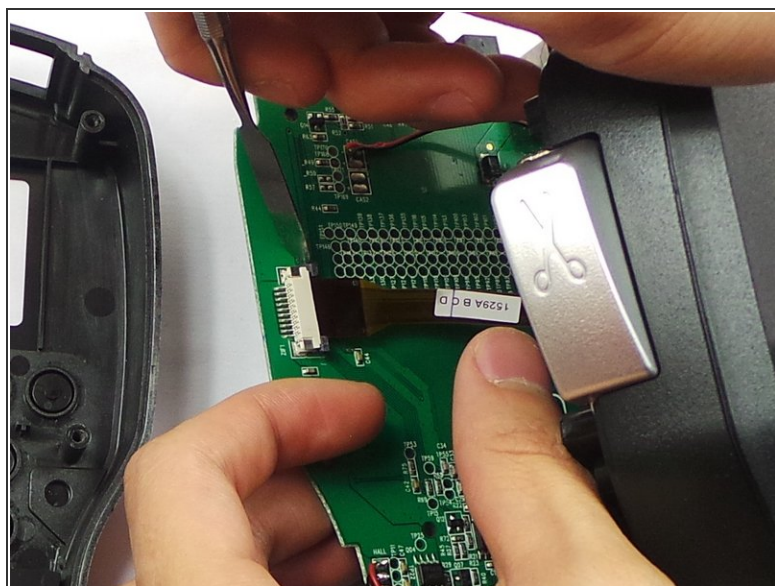
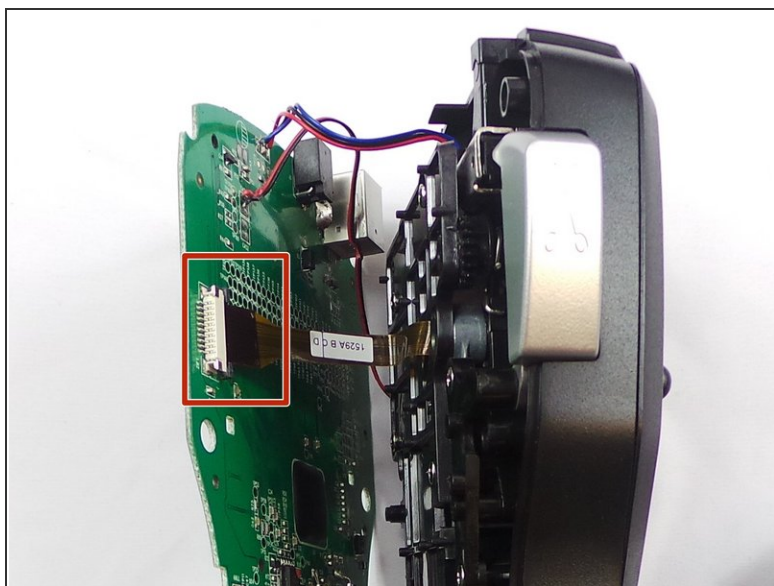
⚠ The keys/buttons highlighted in the second picture fall out easily so be careful. Keep device faced down in order to keep them from falling.

Step 4 — Screen



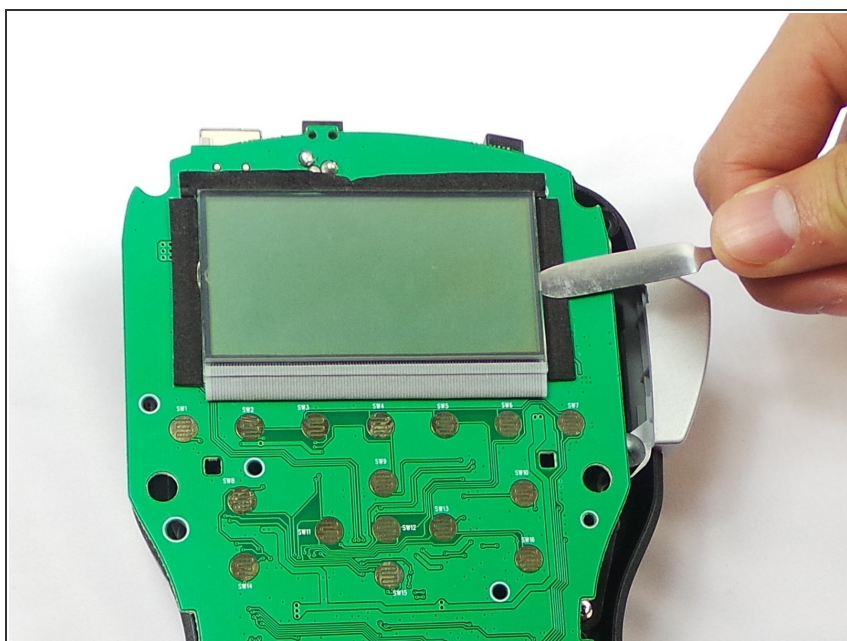
- Further remove the 2 screws (1.2mm X 4mm Phillips #0 head).

Step 5



- Detach the ribbon cable.

Step 6



- Remove the screen.

To reassemble your device, follow these instructions in reverse order.