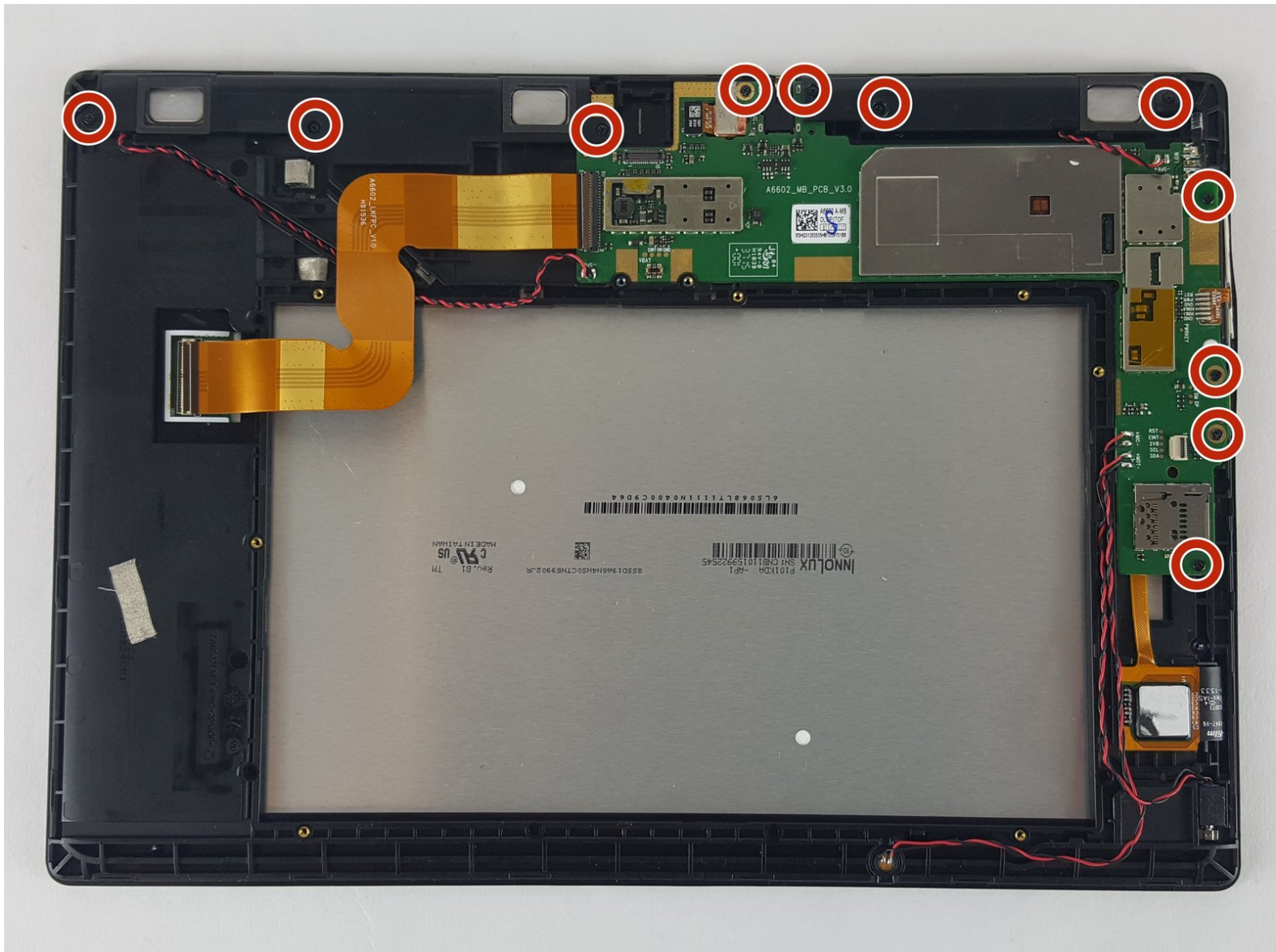




# Lenovo Tab 2 A10-70 Motherboard Replacement

Replacing a broken or faulty motherboard on the Lenovo Tab 2A.

Written By: Ricardo Montanez



## INTRODUCTION

The motherboard controls all of the processes of the device and if it is faulty must be replaced otherwise the device will not operate.

---

### TOOLS:

- [Spudger](#) (1)
  - [Tweezers](#) (1)
  - [Phillips #00 Screwdriver](#) (1)
  - [Phillips #000 Screwdriver](#) (1)
  - [Phillips #0 Screwdriver](#) (1)
  - [iFixit Opening Tools](#) (1)
-

## Step 1 — Battery



✦ Before removing the battery, make sure the device is powered off

- Use a plastic opening tool to pry open the back cover of the tablet.
- The second picture shows the tablet with the back removed.

## Step 2



- Remove the tape that secures the ribbon cable.
- Use precision tweezers if the tape cannot be removed by hand.

## Step 3



⚠ Handle ribbon cables with care so it does not rip or tear.

- Carefully remove the ribbon cable from the power button connector.
- To remove the cable, push the clamp on the connector up and pull gently.

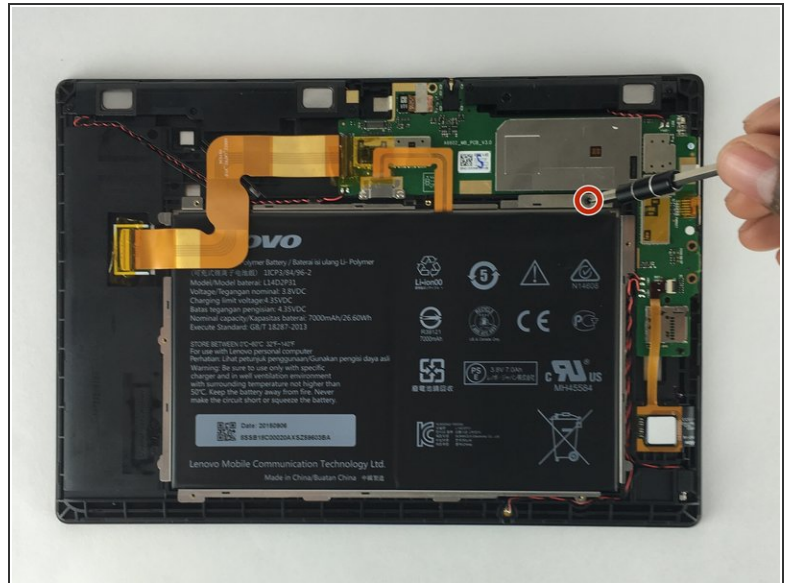
## Step 4



- Remove the following screws securing the metal frame holding the battery.
- Five 2 mm Phillips screws.
- ⓘ Use either the Phillips #00 or #000 bit to remove the screws.

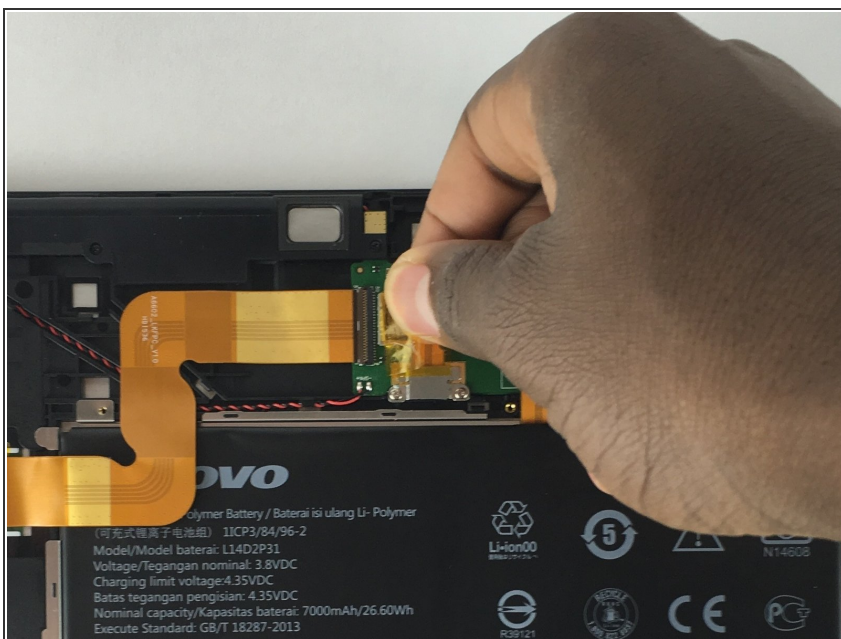


## Step 5



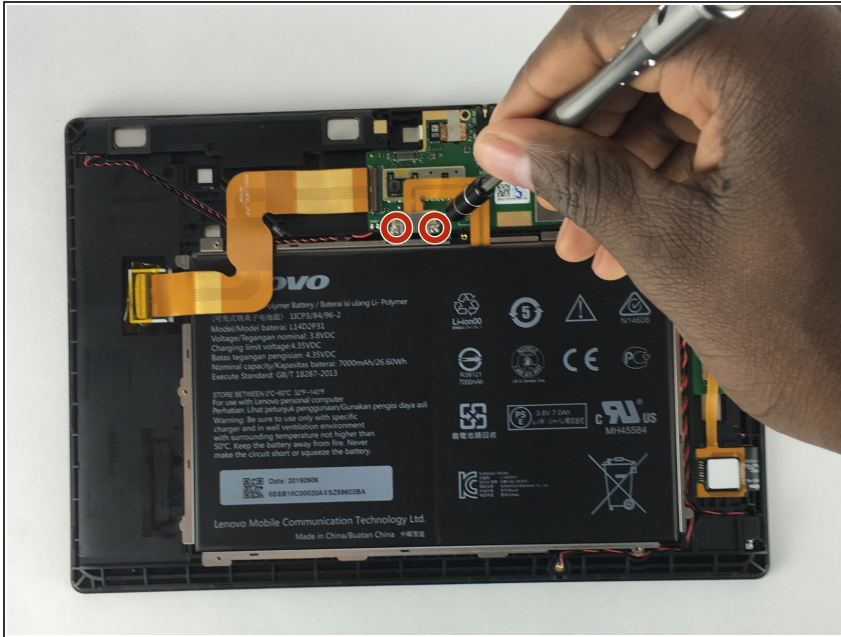
- Remove the grey tape.
- Unscrew the hidden 2mm screw using the Phillips #000 drill bit.

## Step 6



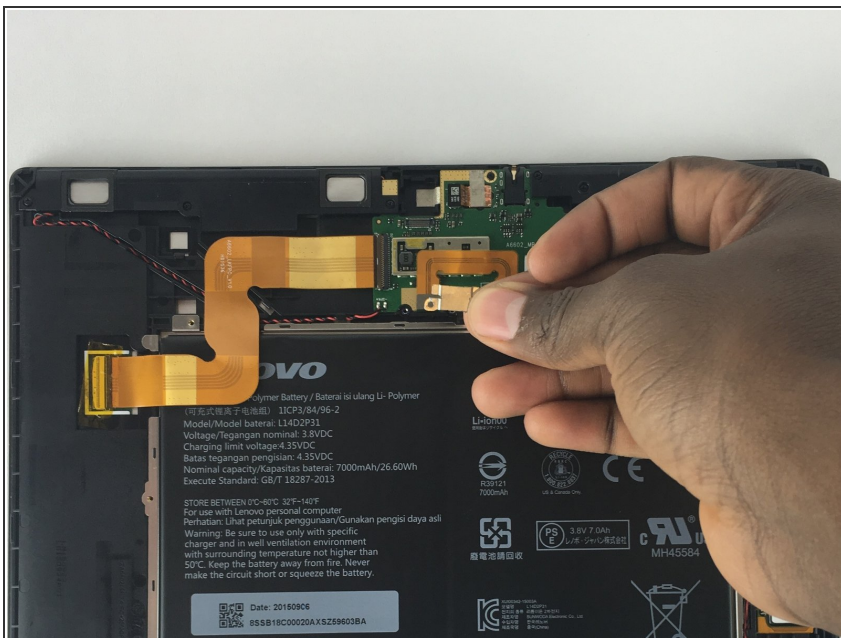
- Remove the second piece of tape from the other ribbon cable connected to the battery.

## Step 7



- Remove the screws securing the battery connector cover.
- Two 2mm Phillips screws.

## Step 8



- Once the screws are removed, remove the metal cover shown.

## Step 9



- Gently remove the following:
  - Disconnect the battery ribbon cable.

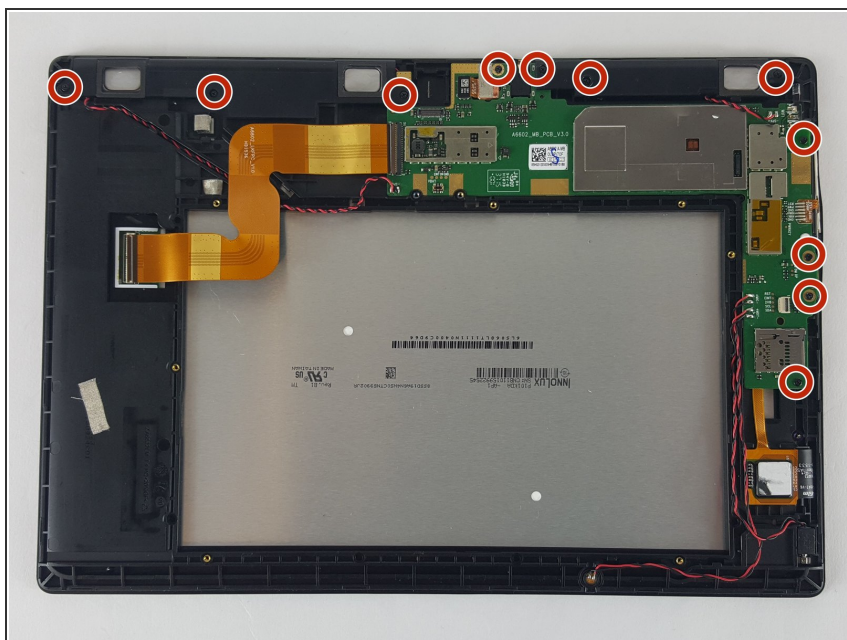
## Step 10



- Once the battery ribbon cable is detached, carefully remove the battery.

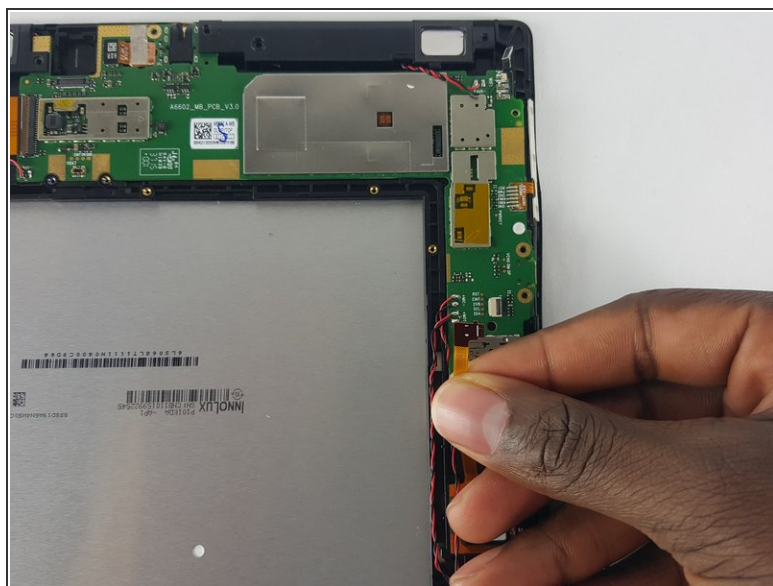


## Step 11 — Motherboard



- Remove the following screws using the Phillips #000 screwdriver.
- Eleven 4 mm screws in total.

## Step 12



- Remove the strip from the center right of the device on the motherboard.

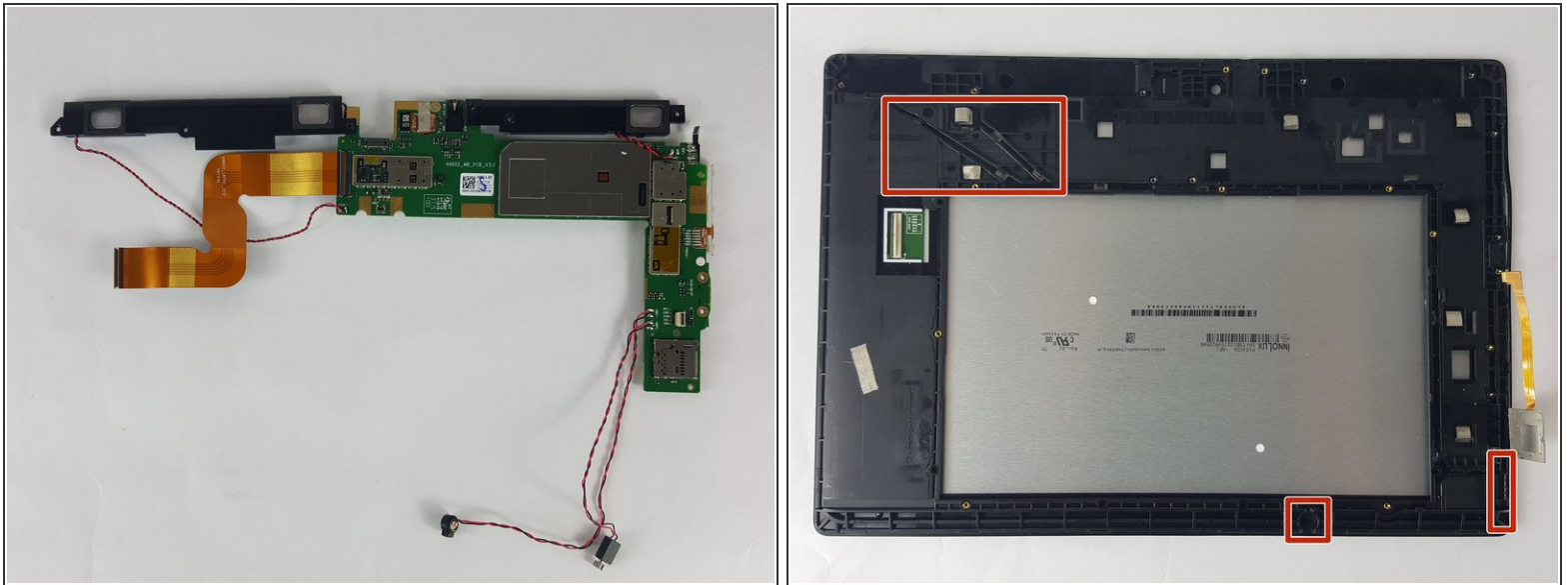


## Step 13



- Remove the larger strip on the upper-left on the device by lifting up the clip that holds it in place and gently remove it.

## Step 14



- i The speakers of the tablet are connected to the motherboard.
- i Parts of the motherboard are secured to the frame of the tablet with adhesive. Gently pry up to remove from the tablet.
  - The wire connected to the motherboard can be removed by lifting them from their shown slots.
  - You have now removed the motherboard .

To reassemble your device, follow these instructions in reverse order.