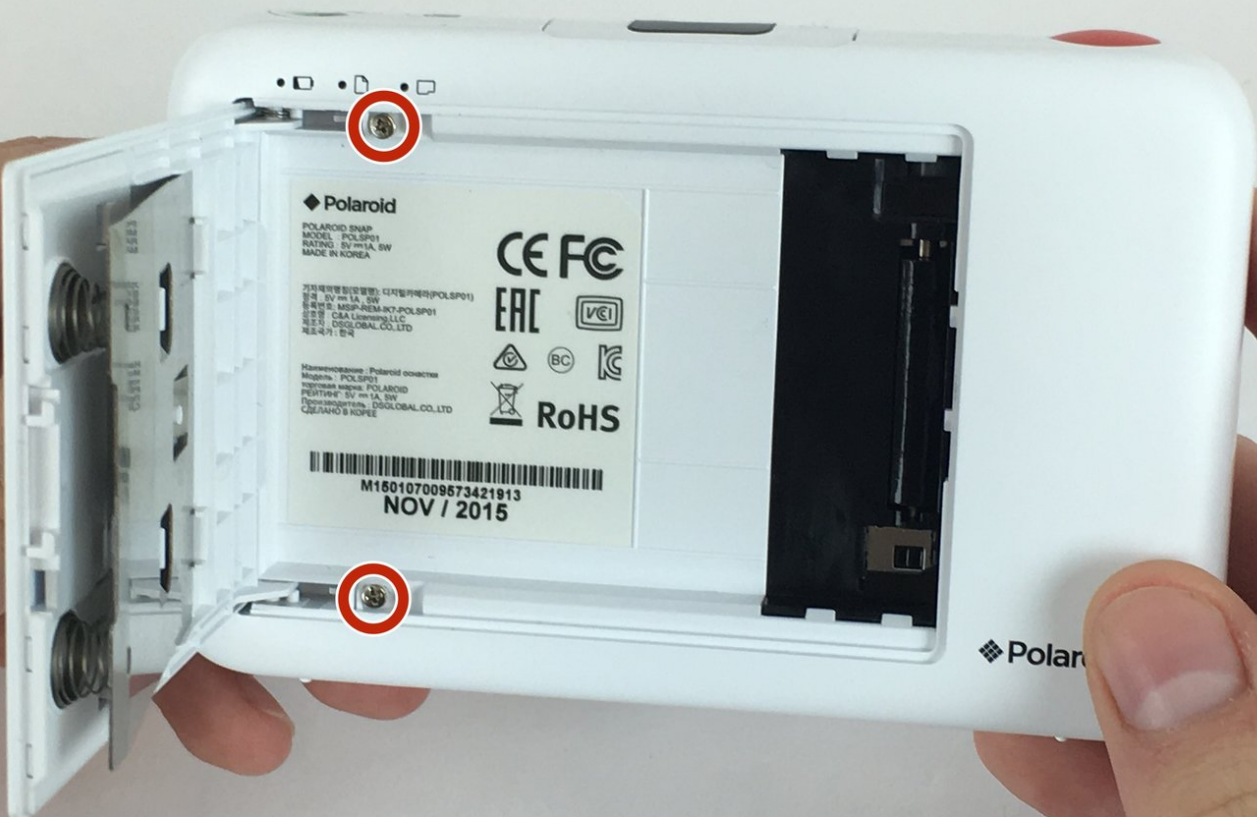




# Polaroid SNAP Front and Back Face Plate Removal

This guide will show users how to remove the front and back face plates of the Polaroid SNAP.

Written By: Aaron Hall



# INTRODUCTION

This guide will show users how to remove the front and back face plates of the Polaroid SNAP.



## TOOLS:

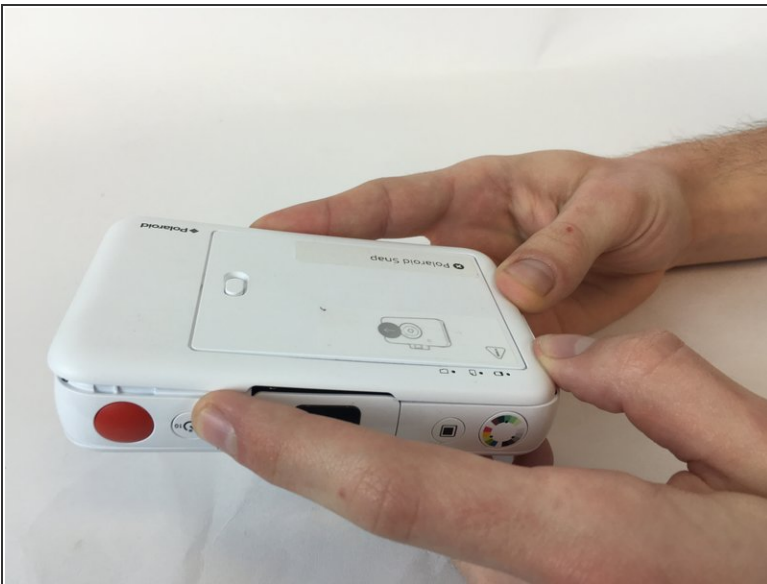
- [iFixit Opening Tool](#) (1)
  - [JIS Driver Set](#) (1)
-

## Step 1 — Polaroid SNAP Front and Back Face Plate Removal



- Open the paper door of the camera, then locate and remove the screws that are on the top and bottom edge of the inside of the camera.
- Screw head: Phillips, Screw length: 3mm

## Step 2



- Push the rear face plate from the short side nearest the screws you just removed towards the other short side of the camera. It should slide forward and unlock the clips holding it in place.
- Then it should be easy to simply lift the rear face plate up and remove it.

### Step 3



- Locate and remove the four screws on the corners of the camera, they're quite small and may be difficult to remove.
- Screw head: Philips, Screw length: 5mm

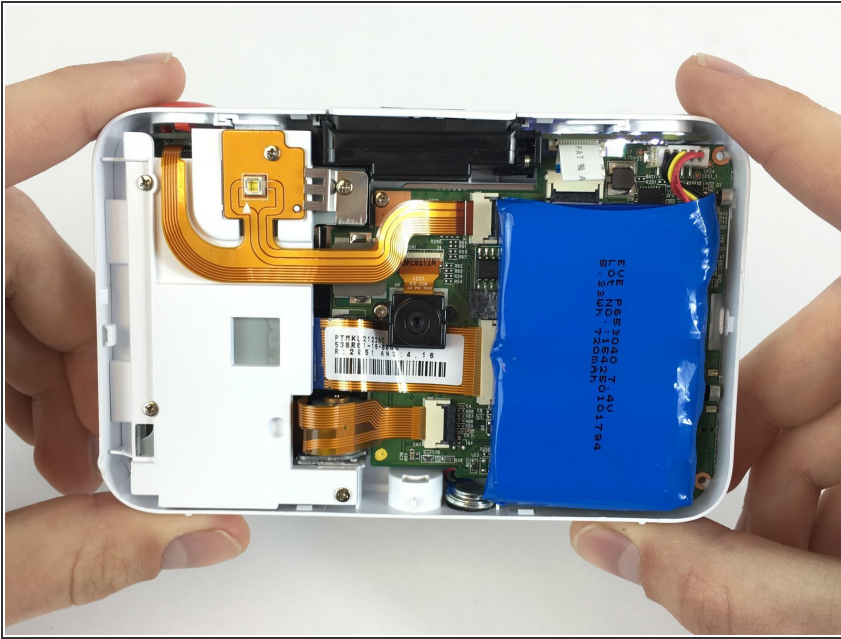
### Step 4



- Once the screws are removed, flip the camera over
- Use a plastic opening tool to disengage the six clips until the front face plate can be removed safely



## Step 5



- The cameras innards should now be accessible to you

To reassemble your device, follow these instructions in reverse order.