



# DigiLand DL701Q Camera Replacement

This guide will show the user how to replace the front and rear camera on the device.

Written By: Jonathan Mysona



# INTRODUCTION

This guide will help the user replace the camera. This guide will show how to remove the back case, remove the battery, and the camera without harming the device. Camera replacement is usually needed when the screen is black and the user is trying to take a picture.



## TOOLS:

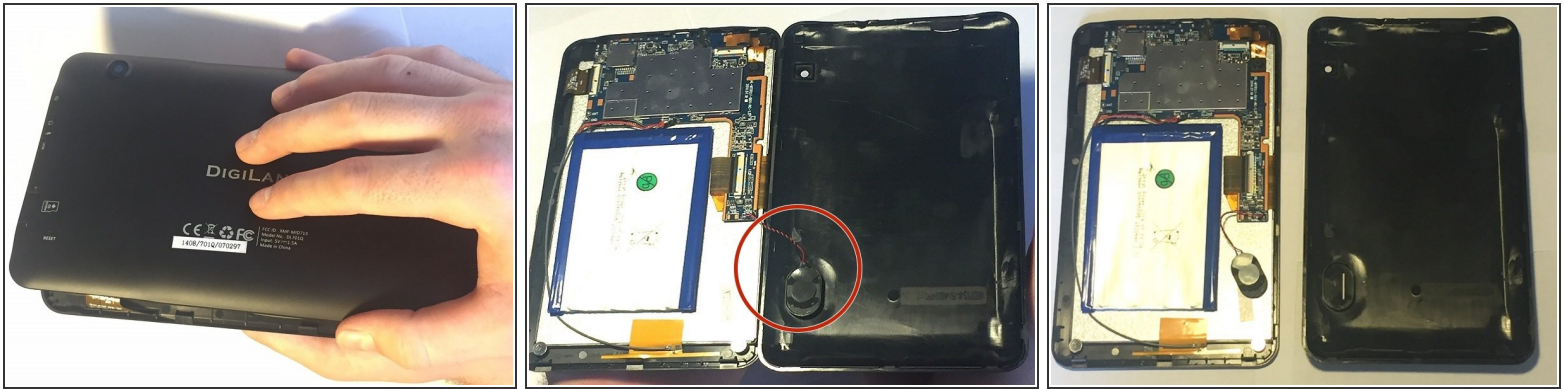
- [iFixit Opening Tool](#) (1)
  - [Tweezers](#) (1)
  - [Soldering Workstation](#) (1)
-

## Step 1 — Back Case



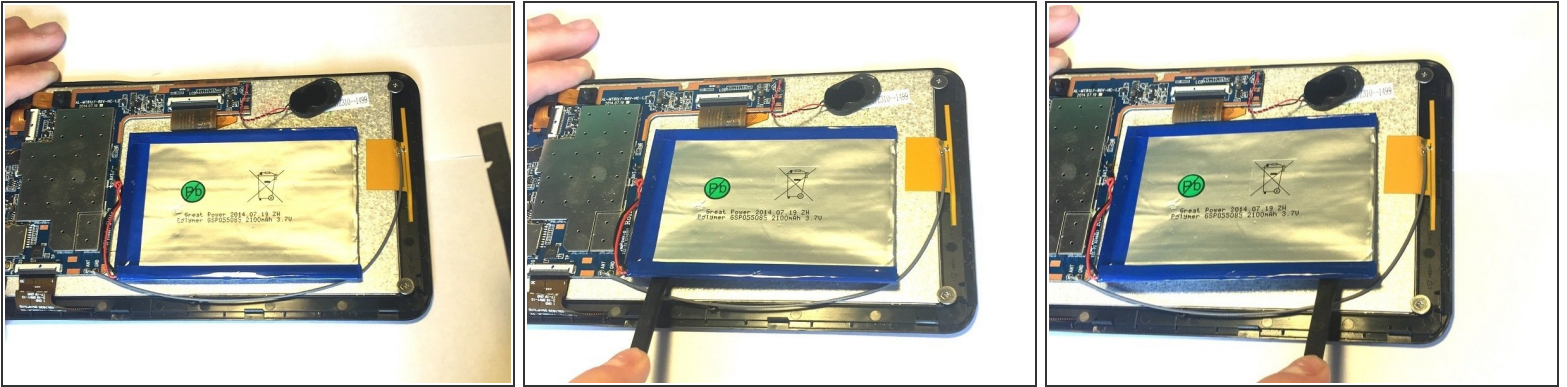
- ⓘ Make sure your device is turned off.
  - Hold the device firmly, in landscape view.
  - Locate the crevice that separates the front cover from the back cover. Then hold the plastic opening tool and insert the wedge portion of the tool into the crevice.
- ⓘ Some force may need to be applied and there may be a cracking sound. This is normal.
  - Slowly slide the wedge portion of the plastic opening tool while applying some upward force around the device until the back cover is completely loose.
- ⚠ Only apply enough force to loosen the back cover. Excessive force may damage the screen.

## Step 2



- Place the screen in the palm of your hand and then with your other hand carefully grab the case and remove the cover like flipping the page of a book.
- Lay the device down and notice that the speaker will be attached to the back cover with a wire. Carefully lift the speaker upward from the back cover and place it near the battery.
- ⓘ The speaker may be glued in so treat with care and remove the speaker by gently moving your finger around it and lifting up.

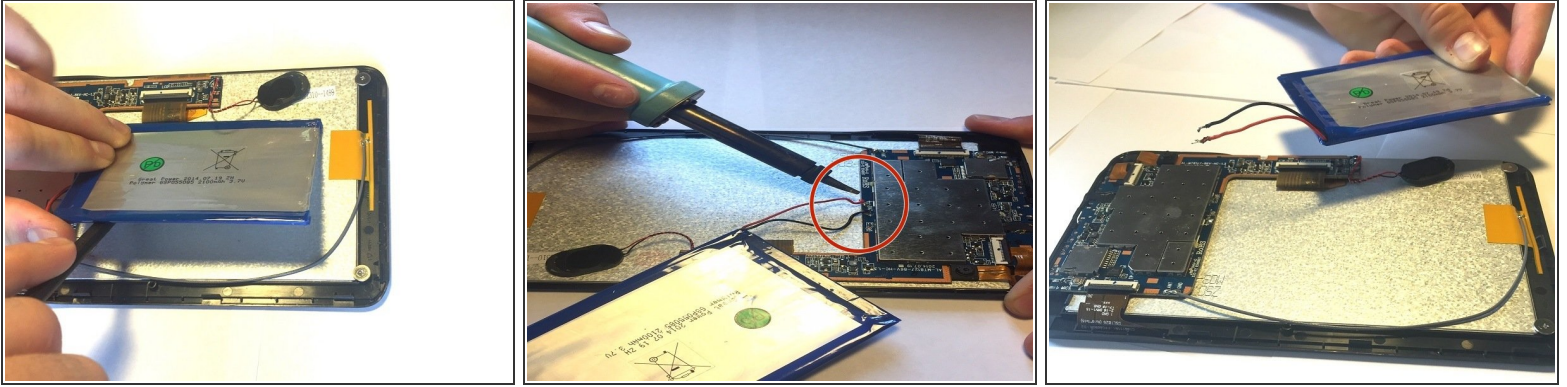
## Step 3 — Battery



- Lay device flat on the table.
  - Firmly grip the device on the edges. Take the wedge portion of the spudger tool and push in between the battery and the screen with force. Begin pushing the spudger with the wedge underneath the battery all the way around in order to break the glue.
  - Repeat this step pushing further across and underneath until the battery is loose.
- i** The battery is heavily glued to the screen and much force may be needed to break the glued bond.

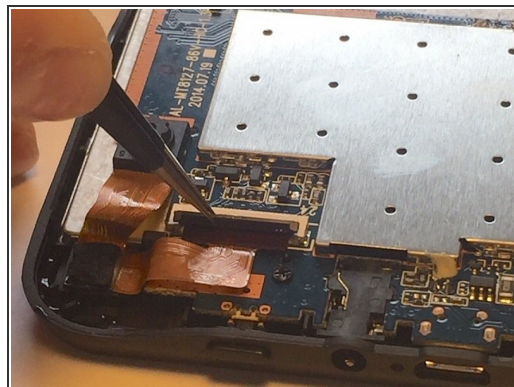
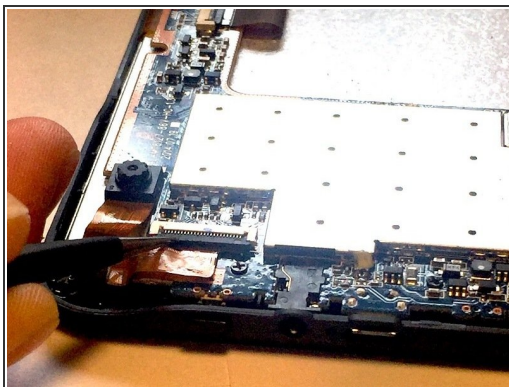
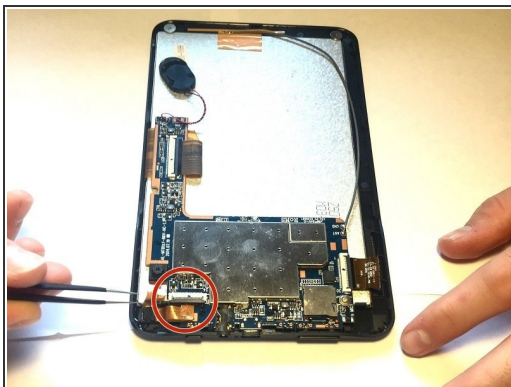


## Step 4



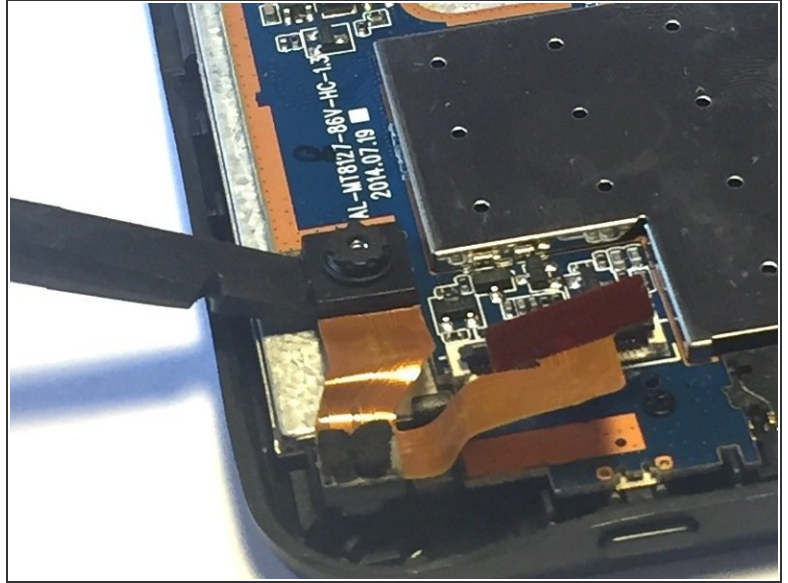
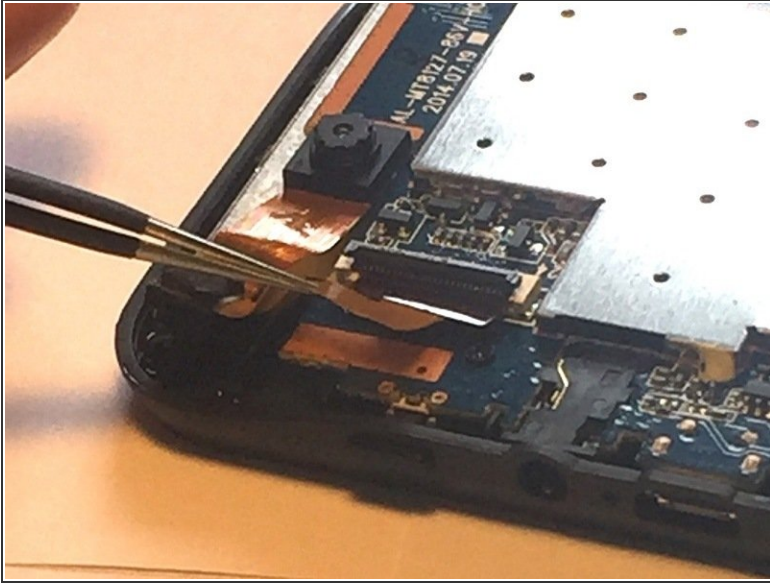
- Once the battery is loose slowly lift it up so you can get to the terminals as seen in the next picture.
  - Desolder the battery's connection terminals from the motherboard.
  - ⓘ If you do not know how to desolder look at this [soldering and desoldering guide](#)
  - Remove the battery by pulling it out of the device.
- ⚠ In order to avoid damage to the device, the battery must be physically removed from the device before proceeding with any further repairs . Leaving a battery close to a device being worked on can be extremely hazardous. Leads can bump into the motherboard or into each other by accident causing damage to the device.**

## Step 5 — Camera



- First orient the device to a portrait position as seen in the picture.
- Locate the zero insertion force (ZIF) connector shown in the figure.
- Use the tweezers to pull up on the zero insertion force (ZIF) connector and release the ribbon.
- Next, take the tweezers and grab the ribbon and pull outward from the socket.

## Step 6



- Then take the tweezers and grip the tape on the back of the camera and pull outward.
- Lastly, take the spudger and pry the back camera from the bottom applying force upward.
- The camera should be loose from the device and now you can lift it up and remove it.

**⚠ The camera should be removed before proceeding with any further repairs in order to avoid damage to the ribbons and/or camera when removing the motherboard.**

To reassemble your device, follow these instructions in reverse order.