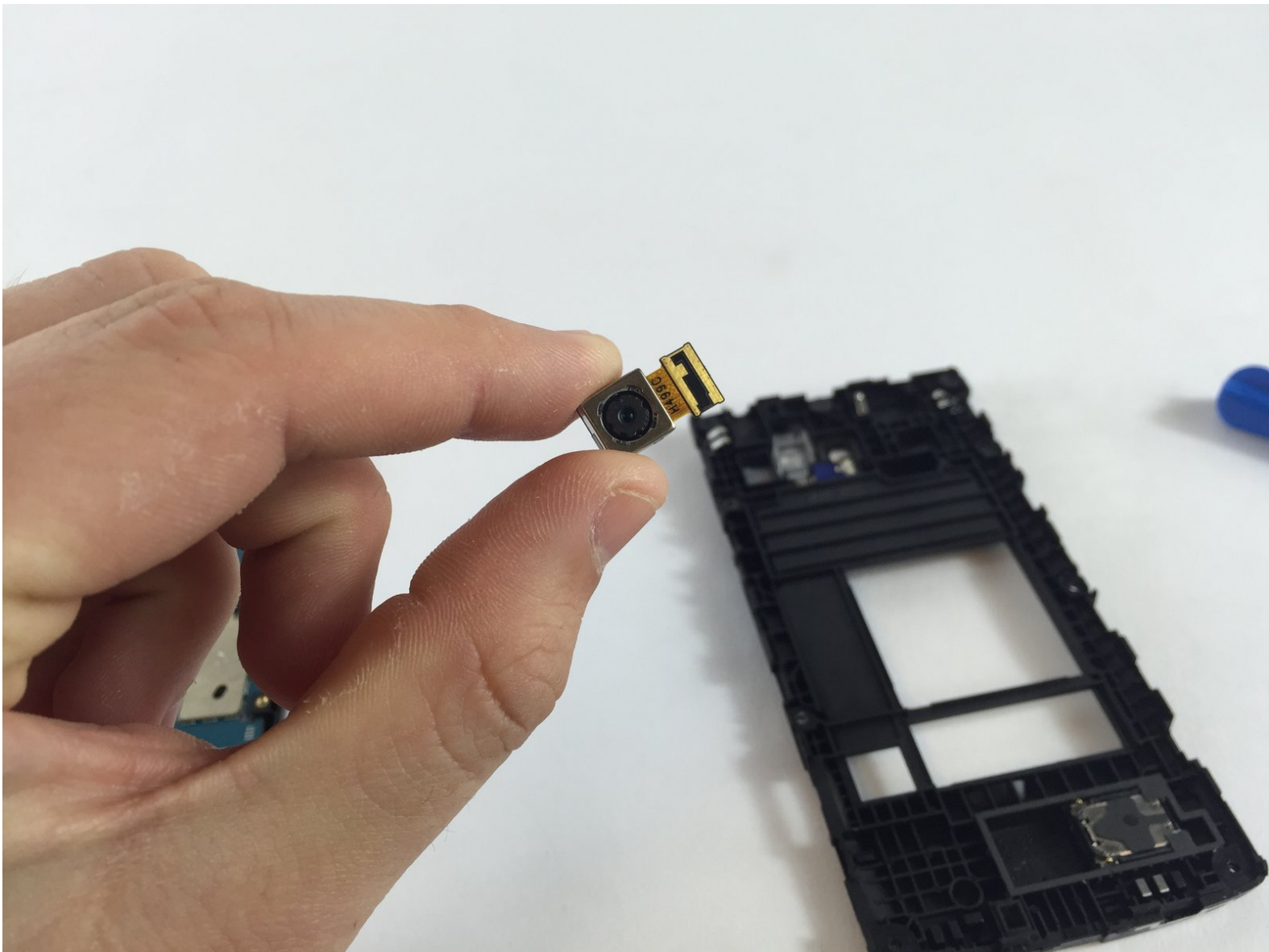




# LG Power Back Camera Replacement

If your camera malfunctions or is broken, you may need to replace it. Follow this guide to access and replace your LG Power Back Camera.

Written By: Mohammed Samin



## INTRODUCTION

It will allow users to remove and install a new camera if their current one is broken. In cases where the currently installed camera is cloudy or needs cleaning, this guide will be helpful in doing so without effecting other parts of the device.



### TOOLS:

- [iFixit Opening Tools](#) (1)
  - [Screwdriver](#) (1)
  - [Phillips #000 Screwdriver](#) (1)
-

## Step 1 — Battery



- Slide a plastic spudger, or guitar pick, between the back and front panel at the bottom .

⚠ A metal spudger can easily damage your device. A plastic opening tool is always the only option.

## Step 2



- Carefully pop the back panel off and place it to the side.

## Step 3



- Use the thumb tab to remove the battery.

## Step 4 — Back Camera



- Remove the eight 4mm screws along the side of the mid panel using the Phillips #000 screwdriver head.

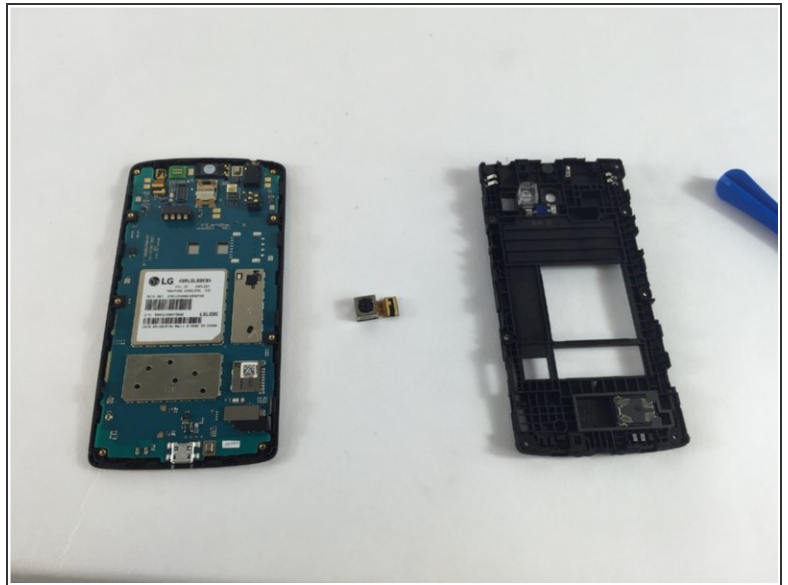
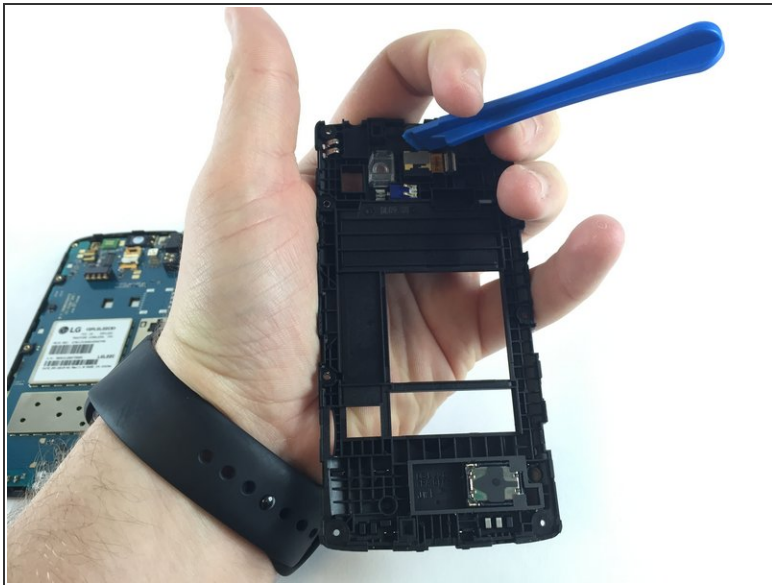


## Step 5



- Slide a plastic opening tool between the mid-panel and front panel to remove the middle panel.
- Place the mid panel to the side.

## Step 6



- Detach the back camera from the back of the mid panel using a plastic opening tool, and remove it.
- The camera will be completely free at this point.

To reassemble your device, follow these instructions in reverse order.