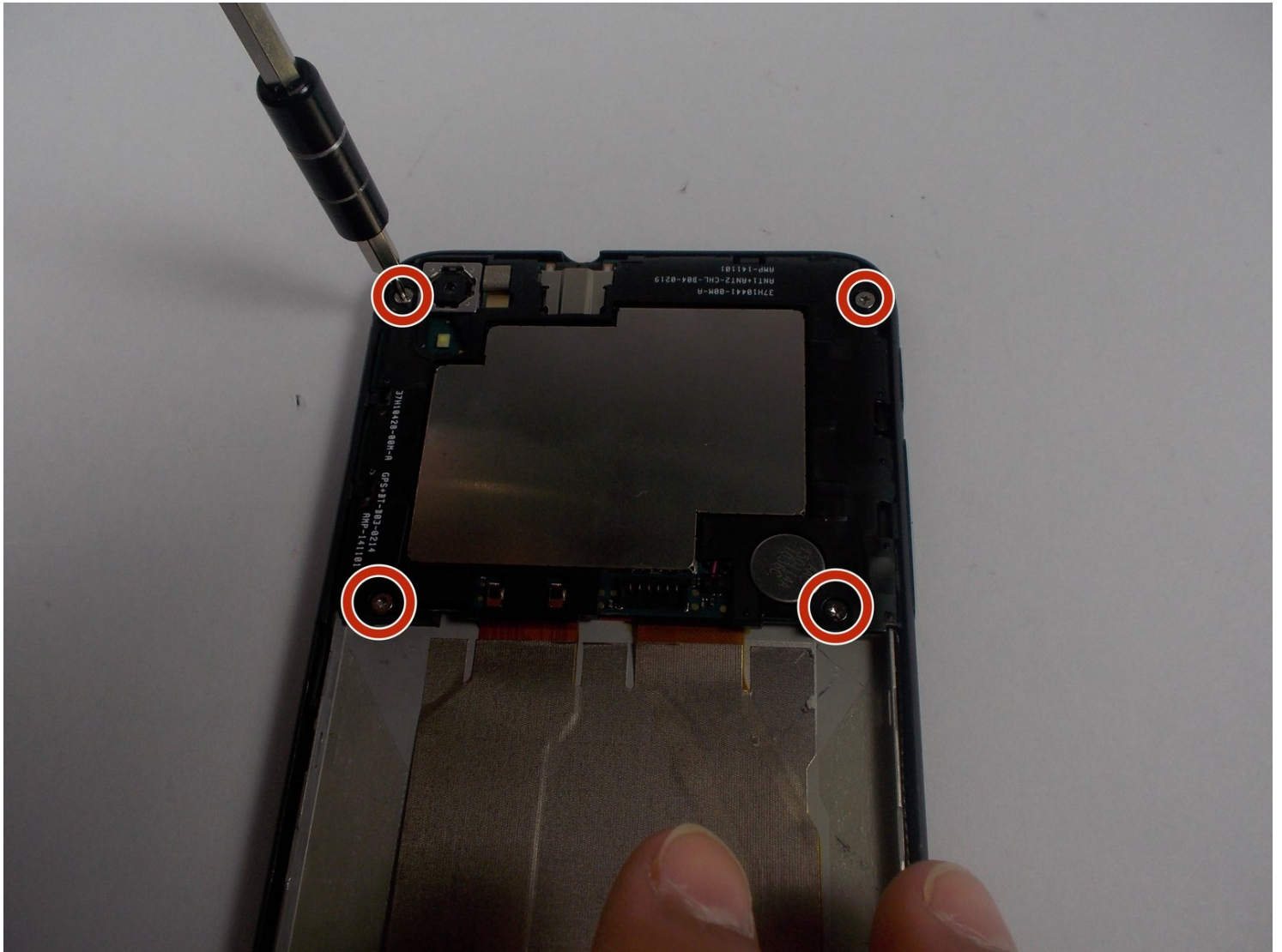




# HTC Desire 816 Front Facing Camera Replacement

Capturing images is how people retain visible...

Written By: Saleena Douangphachanh



# INTRODUCTION

Capturing images is how people retain visible proof of memories being created. This guides purpose is to help the user replace a major key component in a cellular device that gives users the ability to see themselves.

---

## TOOLS:

[iFixit Opening Tool](#) (1)

[Spudger](#) (1)

[Phillips #000 Screwdriver](#) (1)

[Tweezers](#) (1)

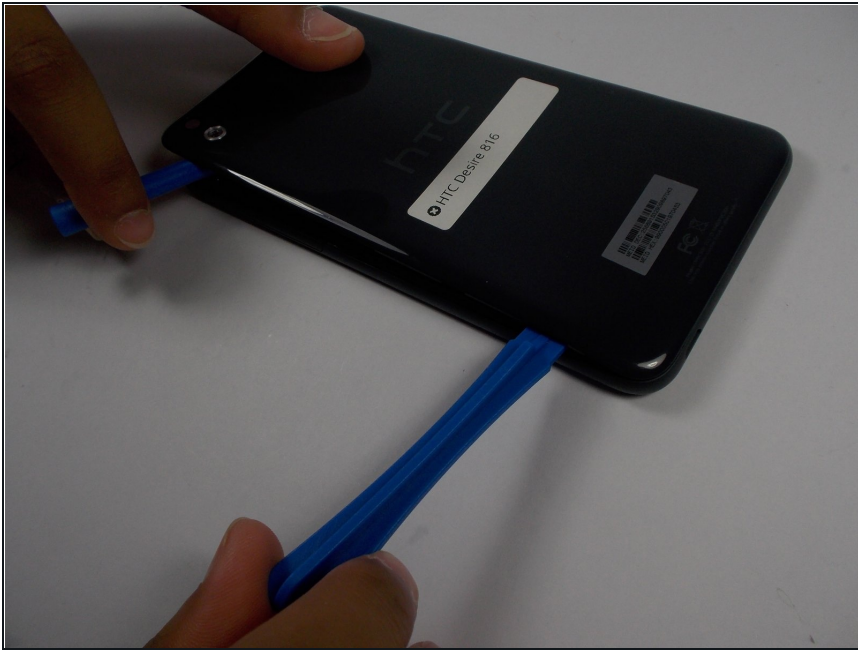
---

## Step 1 — Battery



- Pry open the back panel by inserting the plastic opening tool on the left of the camera. We find this spot the easiest to get the tool under the panel.

## Step 2



- Once you get an open spot, with a second plastic opening tool, slide down to the bottom of the phone to free the rest of side.

## Step 3



- There is adhesive between the battery and the back panel. Take a nylon spudger to cut through the adhesive.
- ⚠ Be sure to use the correct tool for the job. Metal spudgers can puncture an unprotected battery, potentially causing a fire.**

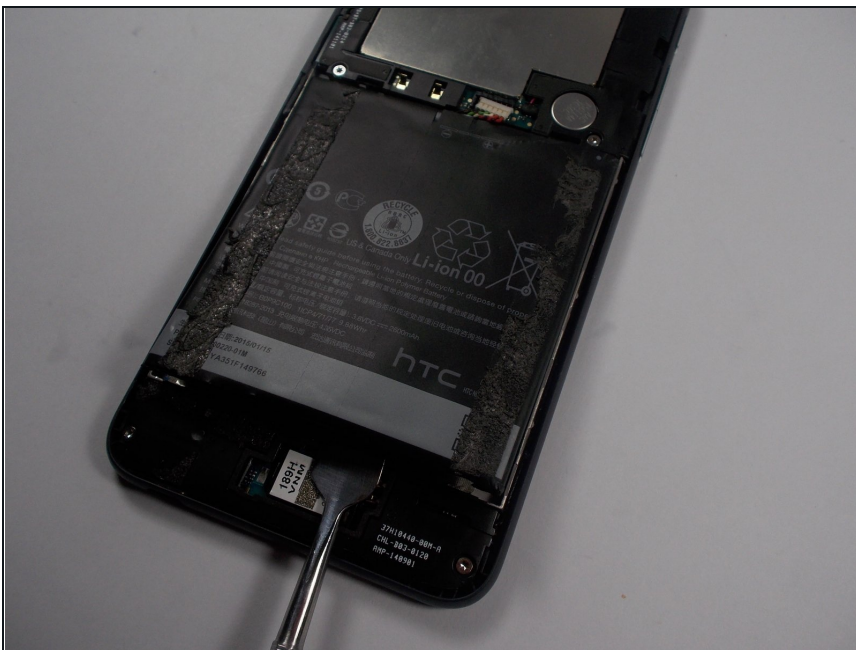


## Step 4



- Once all way around the bottom, the panel should be broken free of the adhesive, and the rest of the panel should pop right off.

## Step 5



- Insert a nylon spudger at the bottom of the battery and lift up to remove the battery.
- ⚠ Be sure to use the correct tool for the job. Metal spudgers can puncture an unprotected battery, potentially causing a fire.

## Step 6



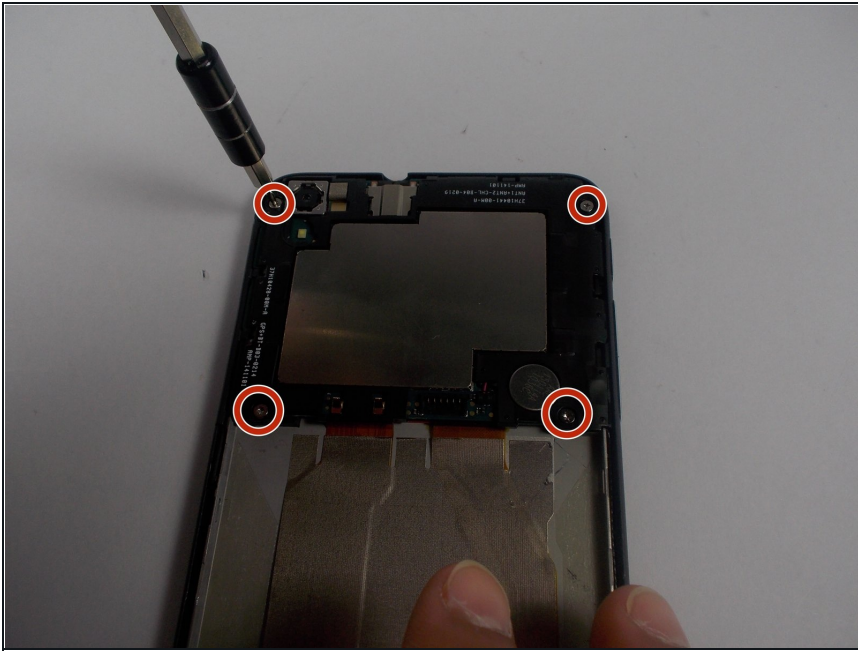
- There is adhesive on the other side of the battery as well, take the nylon spudger used to get off the panel and cut through.

## Step 7



- Carefully lift battery backside first to disconnect the white connector.

## Step 8 — Front Facing Camera



- Using the T5 screwdriver, unscrew these four screws in order to remove the plastic casing.

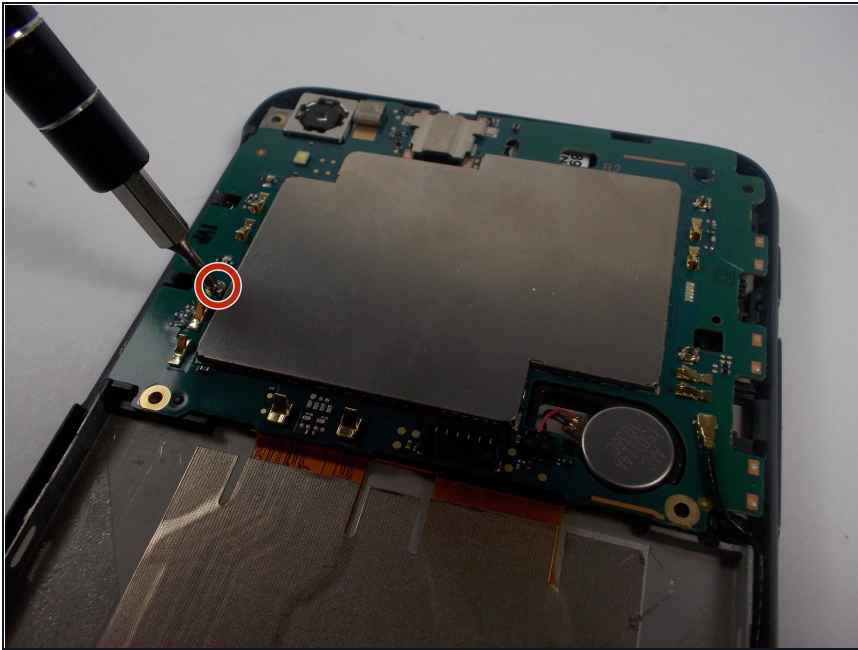
## Step 9



- Remove the black plastic casing with a plastic opening tool.

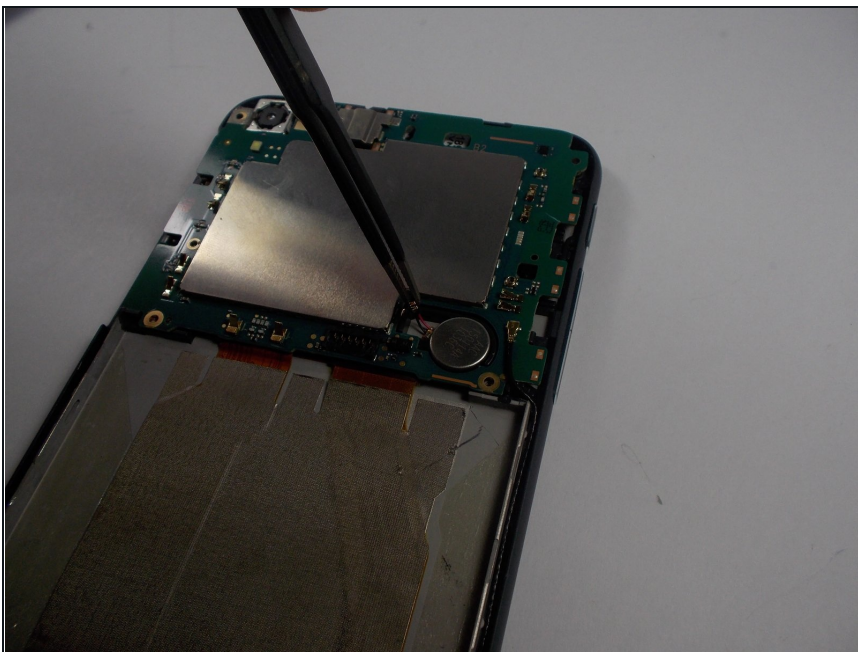


## Step 10



- Using the PH000 screw driver head, unscrew the one screw that is holding down the mother board. (This screw is located on the left side of the motherboard.)

## Step 11



- Using a pair of [tweezers](#), gently disconnect the battery wire from the motherboard.

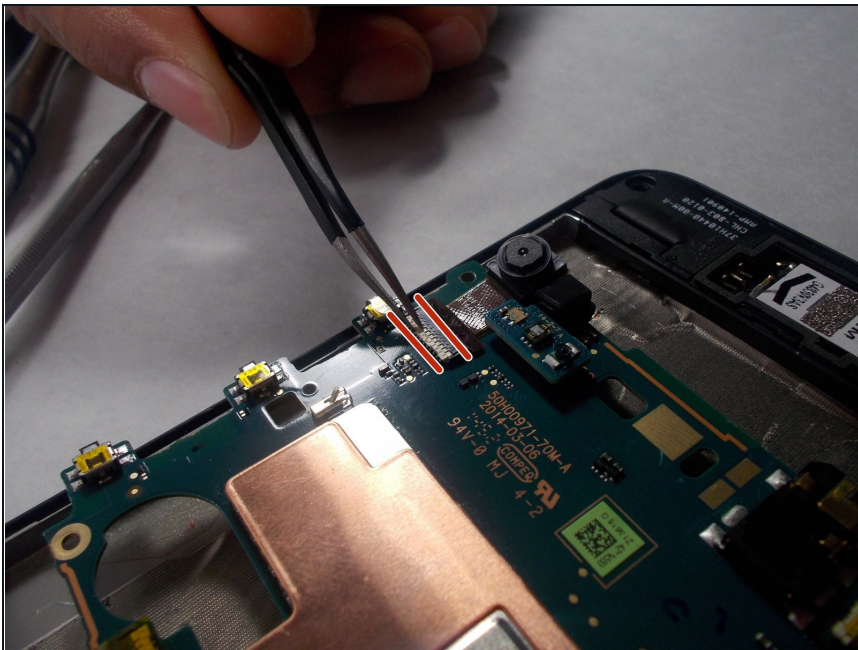
## Step 12



- Lift the motherboard and peel it back.

⚠ Do not disconnect the motherboard from the device.

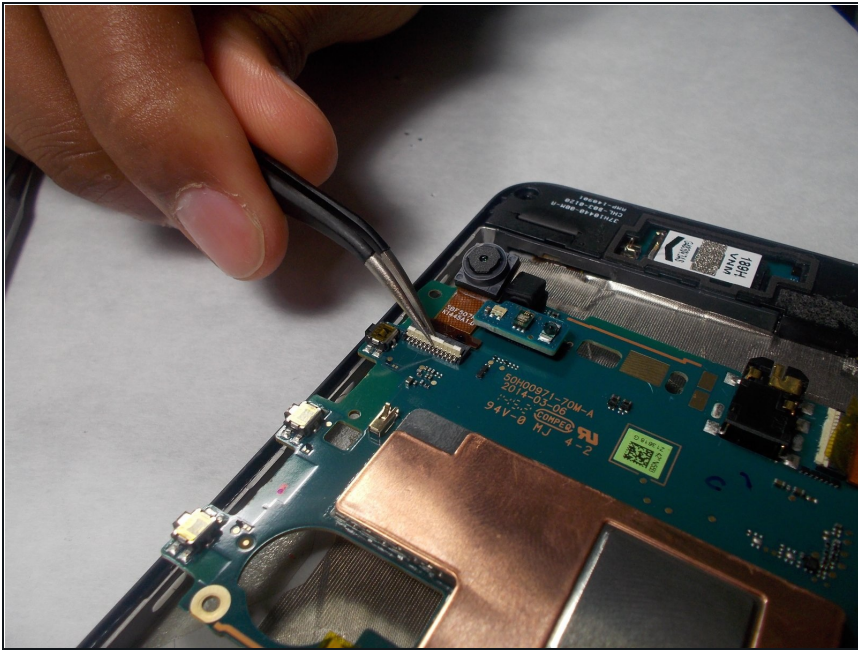
## Step 13



- Locate the camera and its connector.

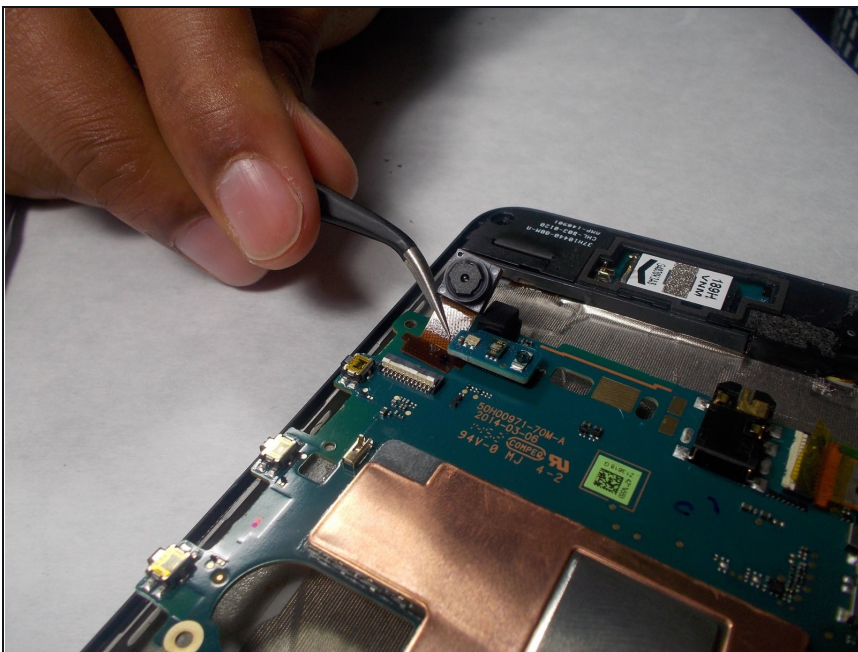


## Step 14



- Using a pair of tweezers, lift the white part of the connector and disconnect the camera from the motherboard.

## Step 15



- Use a pair of tweezers to slide the camera out and remove the camera from the device.

---

To reassemble your device, follow these instructions in reverse order.

