



Acer Aspire One D255E Hard Drive Replacement

This guide will walk you through replacing the Hard Drive on this device.

Written By: Brian



INTRODUCTION

The hard drive is one of the more crucial components on a computer. There are a variety of different reasons one would want to replace a hard drive including upgrading the size and replacing a malfunctioning component. You should read through the entire guide before performing the repair and should have all necessary tools readily available. You should also find a safe location to store the various screws taken out of the computer to ensure that they do not get mixed up or lost.



TOOLS:

- [Spudger](#) (1)
- [Phillips #0 Screwdriver](#) (1)



PARTS:

- [1 TB SSD / Upgrade Bundle](#) (1)
- [250 GB SSD / Upgrade Bundle](#) (1)
- [500 GB SSD / Upgrade Bundle](#) (1)
- [2 TB SSD](#) (1)

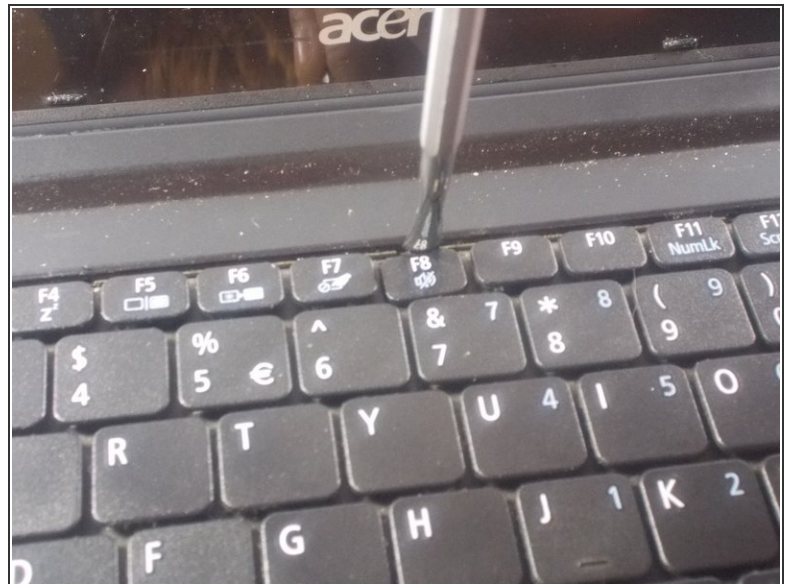
Step 1 — Keyboard



- Start by removing the battery found on the back of the device.

⚠ The battery must be removed in order to ensure the device does not have power! Make sure you do not skip this step!

Step 2



- Using plastic opening tools press down the 6 clips located around the keyboard.

Step 3

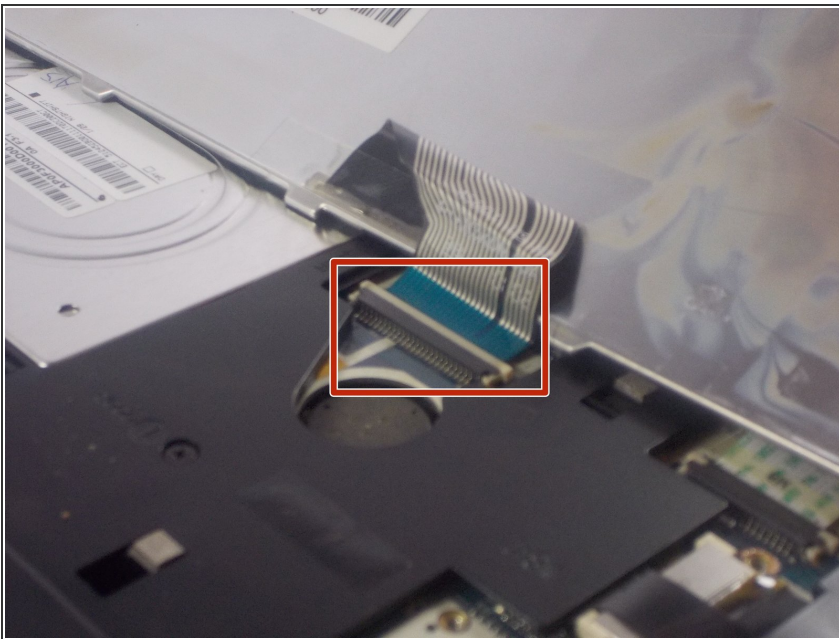


- Using a plastic opening tool or spudger move the keyboard out of position.

⚠ There is a thin cable on the backside of the keyboard. Make sure when you move the keyboard out of position you do so slowly to prevent damage to this cable.

- i** If you use a spudger it is recommended that you use a plastic spudger to reduce the chance of damaging any internal parts.

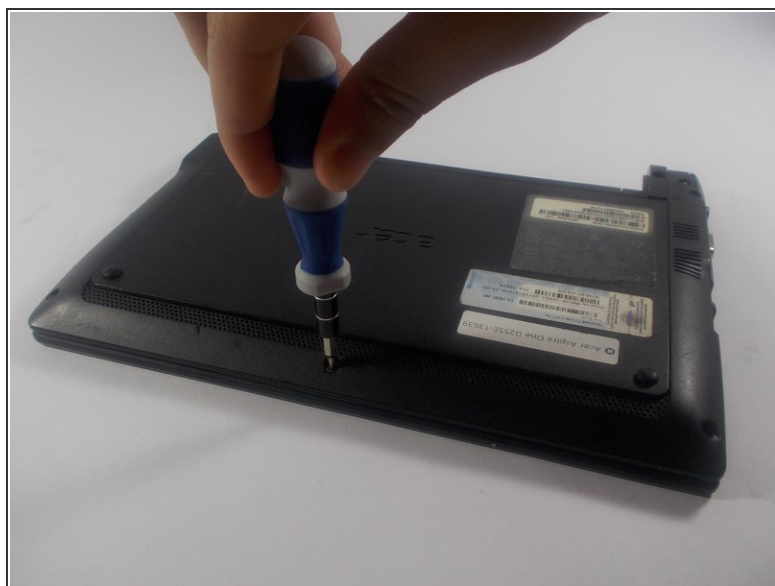
Step 4



- Using a spudger gently push the tab on the port forward then pull out the cable.

⚠ Be careful to do so as gently as possible. You do not want to damage the port.

Step 5 — Back Panel



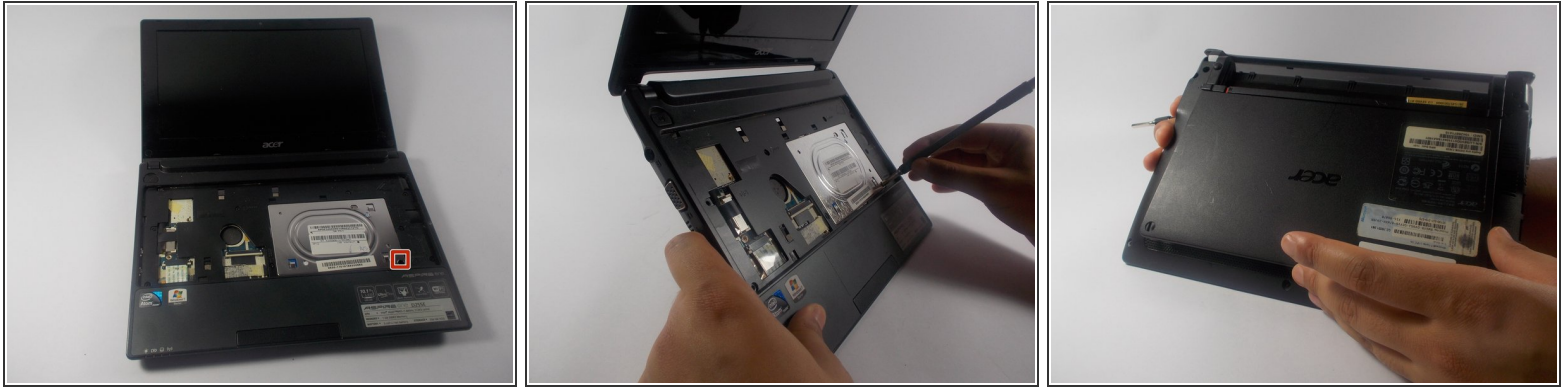
- Unscrew seven 1.2 mm Phillips #1 screws from the back of the device

Step 6



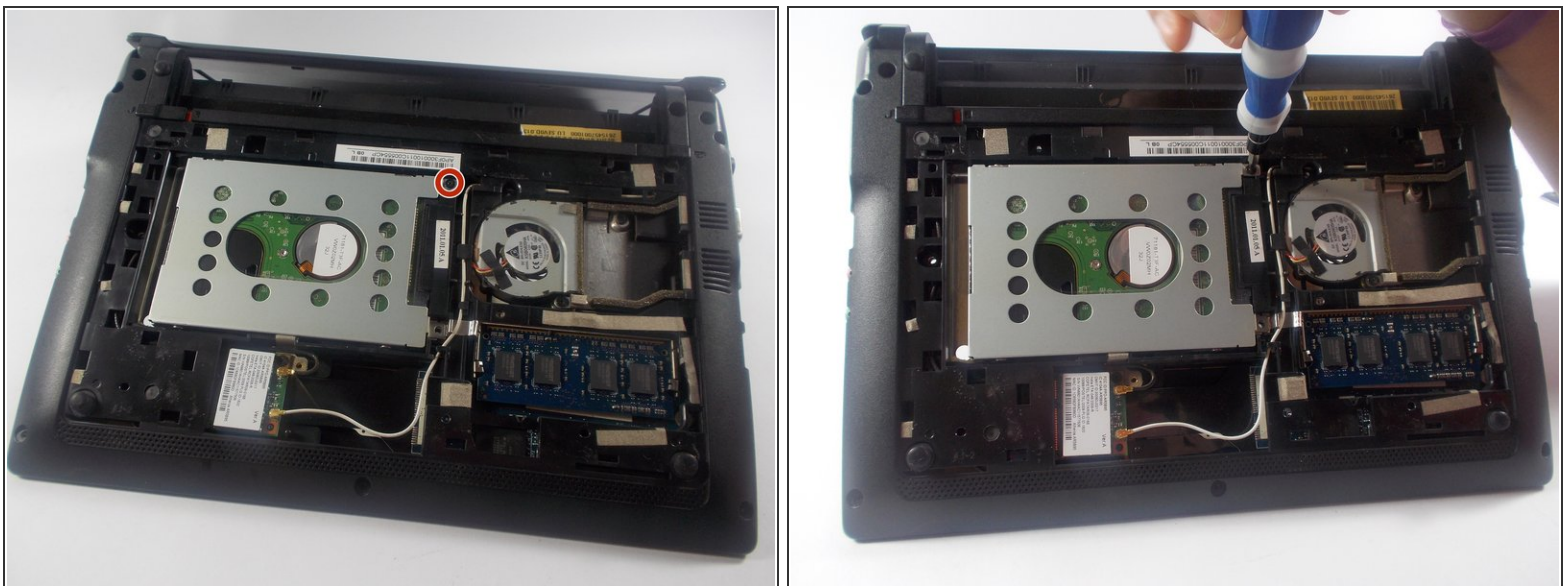
- Unscrew eight more 1.2 mm Phillips #1 screws from the front of the computer.

Step 7



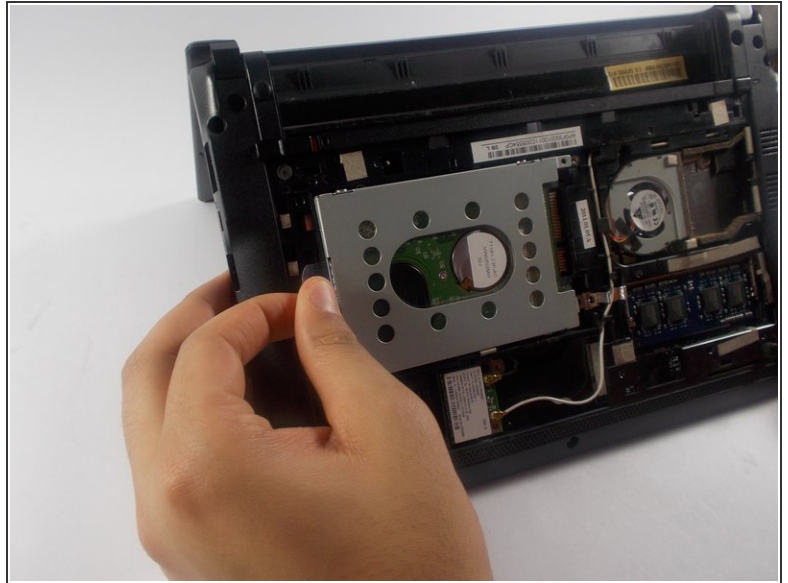
- Using a spudger carefully push through the hole to dislodge the panel on the back of the device then remove the panel by hand.
- ❗ It is recommended that you use a plastic spudger to reduce the chance of damaging any internal parts.

Step 8 — Hard Drive



- Remove the single 1.2 mm Phillips #1 screw from the Hard Drive.

Step 9



- Using the tab on the side of the Hard Drive, pull out the Hard Drive.

To reassemble your device, follow these instructions in reverse order.