



# DeWalt DC970 Forward/Reverse switch Replacement

This guide will walk you through how to replace a broken forward/reverse switch for this device.

Written By: jake



---

## INTRODUCTION

This guide will teach you how to properly replace your forward/reverse switch for this device.

---



### TOOLS:

- [T15 Security Torx Screwdriver](#) (1)
  - [Torque Wrench](#) (1)
-

## Step 1 — Battery



- Compress the buttons on either side of the battery and lift the drill away from battery.

## Step 2



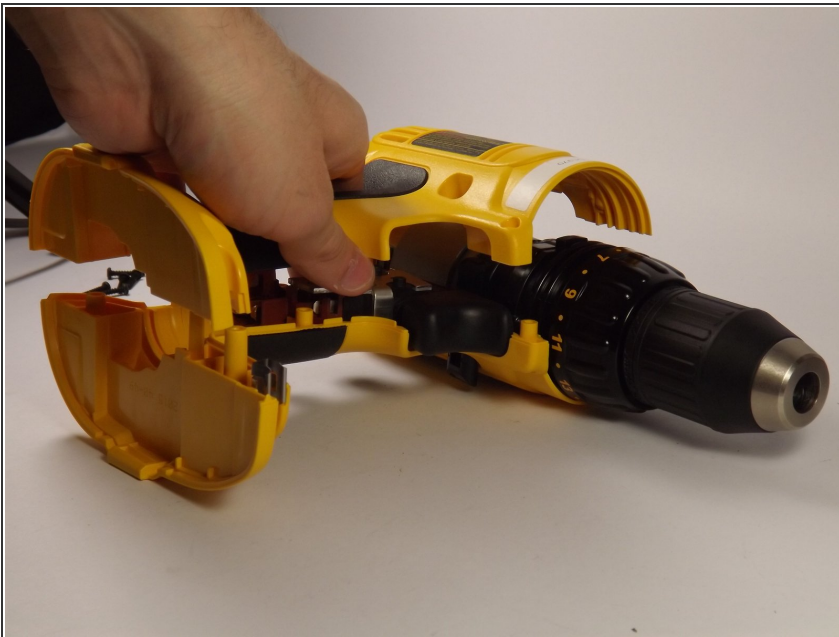
- Remove battery from drill.

## Step 3 — Drill Assembly



- Remove the eight 16 mm, Torx Security #15 screws.

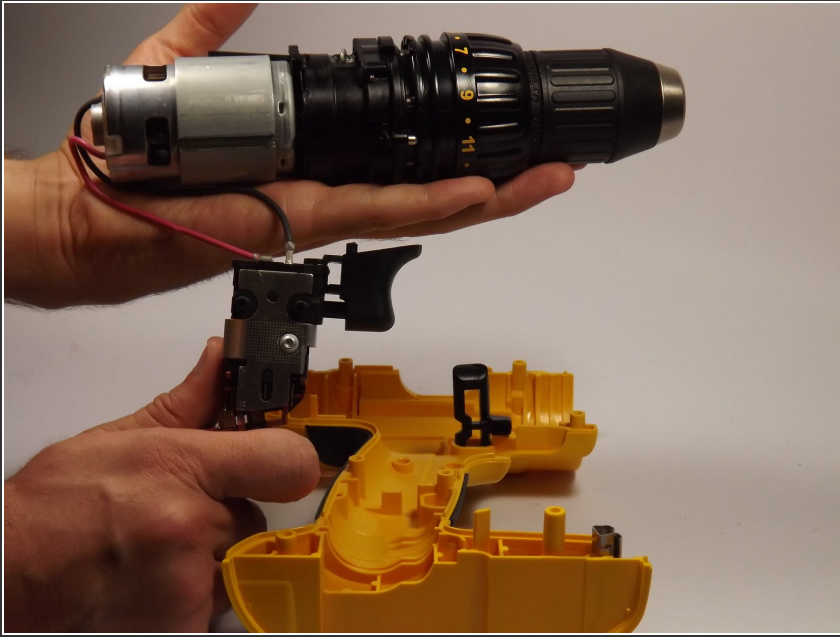
## Step 4



- Lay the drill on its side and gently lift the top half off it.

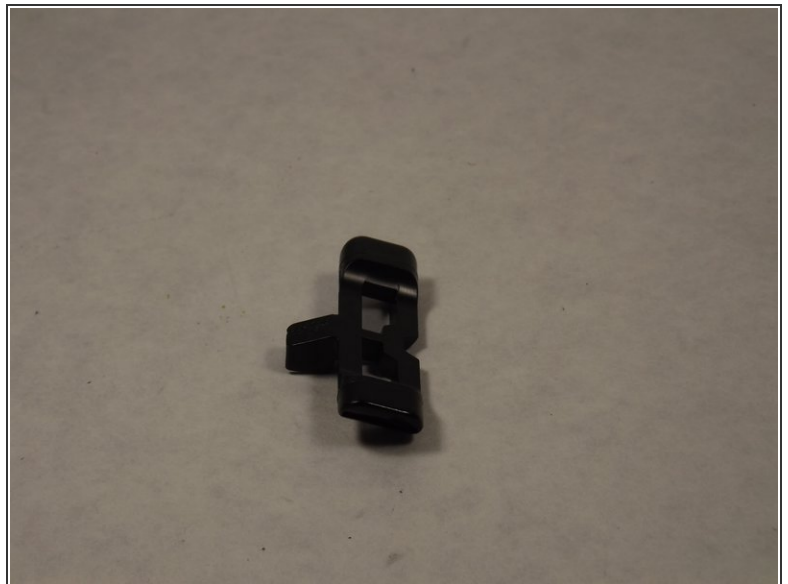
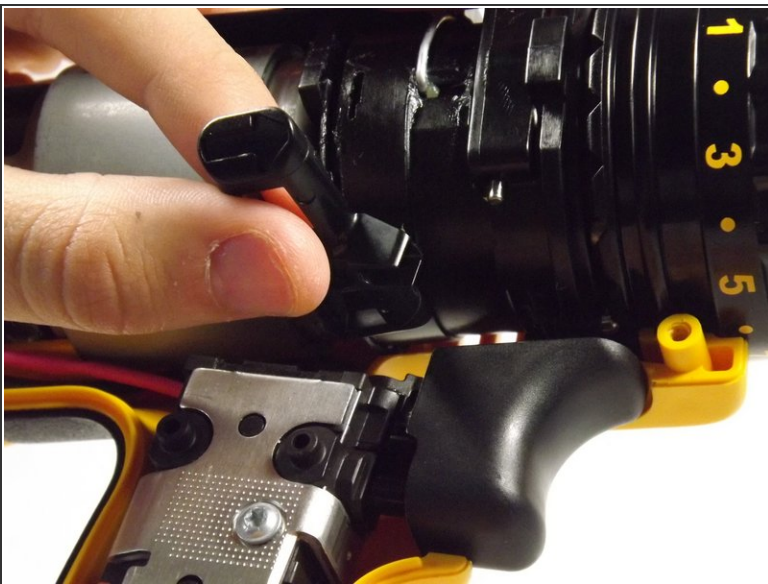


## Step 5 — Forward/Reverse switch



- Remove the drill mechanism from the shell.

## Step 6



- Disconnect the forward/reverse switch from the trigger by pulling the mechanism out and leaving the switch in the frame.
- To replace just pull the switch out and put the new one in the opening.

To reassemble your device, follow these instructions in reverse order.