



Hamilton Beach 49980A Bottom Plate Replacement

This guide will show how to remove the plate that covers the entire bottom of the device. This guide will serve as a prerequisite guide for most other guides on this device.

Written By: Daniel Servant



INTRODUCTION

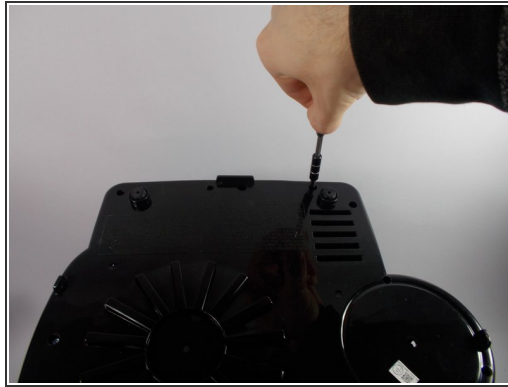
Use this guide to replace the bottom case of the Hamilton Beach 49980A.



TOOLS:

- [Tri-point Y0 Screwdriver](#) (1)
-

Step 1 — Bottom Plate



- Begin by inverting the coffee maker and resting it on a flat surface to make working on the bottom easier.
- Now use a Y0 bit to remove all of the .46 inch long screws from the bottom.
- Lift the plate to remove it from the rest of the machine.

To reassemble your device, follow these instructions in reverse order.