



Holmes HEH8031 Fan Blade Assembly Replacement

Learn how to replace your broken fan assembly in the Holmes HEH8031 heater.

Written By: Corinne Renguette



INTRODUCTION

Use this repair if you want to replace your fan blade assembly. Be sure to turn off the power and unplug the heater before beginning to change the fan assembly. The screws in this heater are recessed, so using a magnetic screwdriver will be helpful. Note: When reassembling the unit, you must replace the 2 machine screws that connect the rotor assembly to the housing before replacing the coarse-threaded screws. Aligning the machine screws may take some finesse.



TOOLS:

- [Metal Spudger Set](#) (1)
 - [Phillips #1 Screwdriver](#) (1)
-

Step 1 — Fan Blade Assembly



- Identify that you have the Holmes HEH8031 heater. The model number is on the bottom of the unit.

Step 2




- Place the heater so the rear housing is facing you.
- Remove the eight (8) 1 cm coarse-threaded screws around the perimeter.
- Remove the two (2) 7 mm machine screws in the center.

Step 3

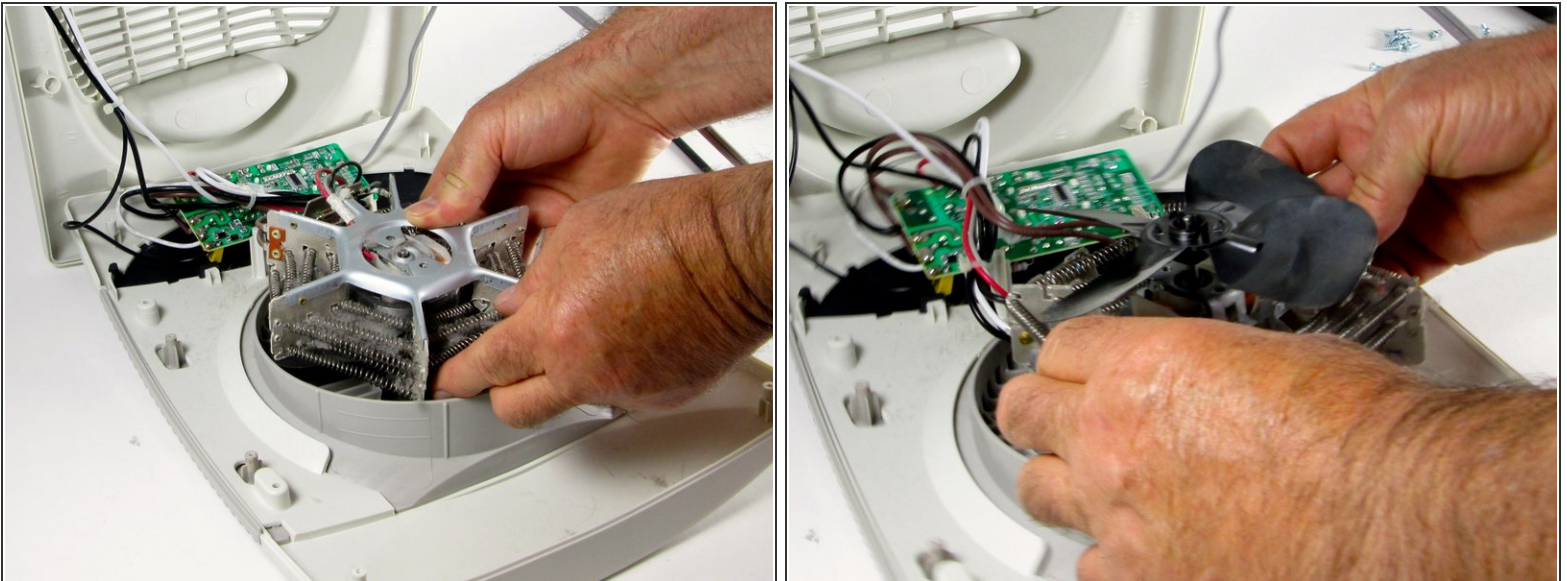


- Using your fingers, pry bottom corner of housing open from bottom to top.

 Wiring remains connected at the top of the front and rear of the housing. Don't pull too hard or you will disconnect the wires.

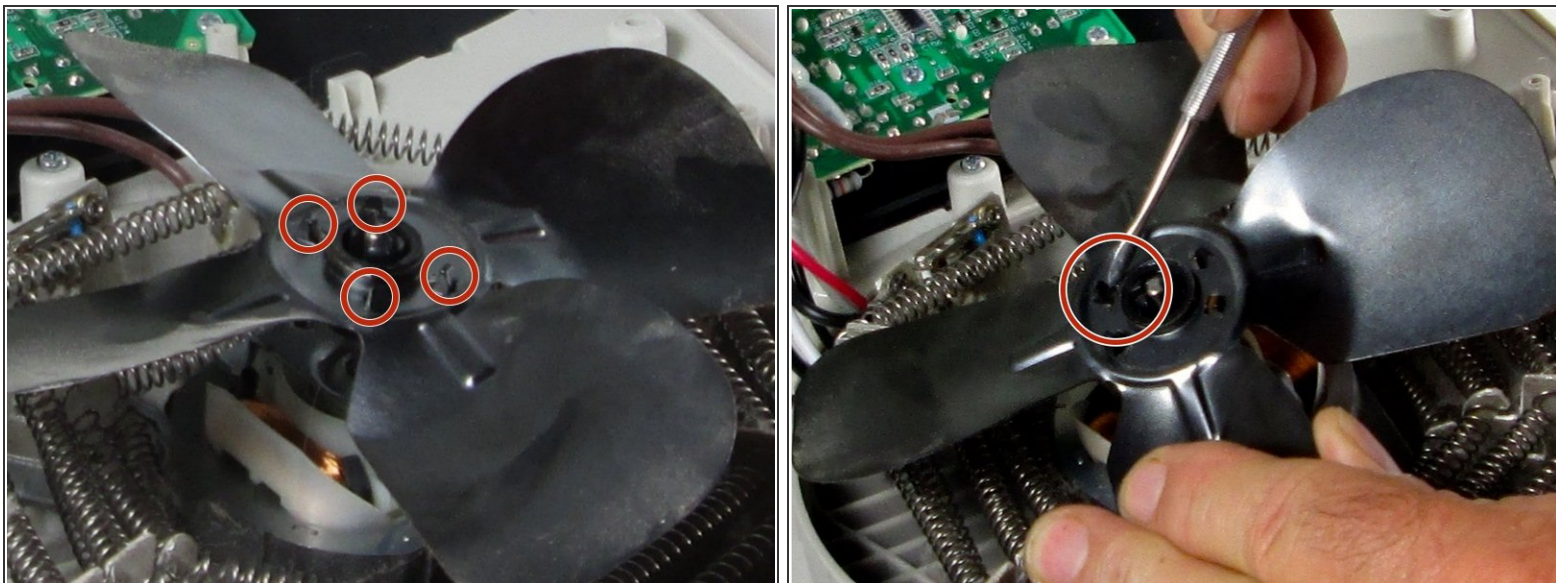
 Fan and rotor assembly are not connected to the housing. They will be loose.

Step 4



- Turn the fan blade assembly over so blades are facing up.
- Locate the four (4) metal tabs that connect the blade assembly to the rotor.

Step 5



- Using the pointed metal spudger, bend each of the four (4) metal tabs toward the rotor shaft.
- ⚠ Bend tabs only far enough to clear the blade assembly so they can be easily bent back later to reattach the new blade assembly.

Step 6 — Remove blade assembly



- Lift the blade assembly off the rotor shaft.
- ⓘ You may need to wiggle the blade assembly slightly to free it from the rotor.
- ☑ When reassembling the unit, you must replace the two (2) 7 mm machine screws that connect the rotor assembly to the housing before replacing the coarse-threaded screws. Aligning the 1 cm machine screws may take some finesse.

To reassemble your device, follow these instructions in reverse order.