



# PlayStation 3 Super Slim Power Supply Unit Replacement

Having problems with power? This guide will walk you through replacing your PS3's power supply unit.

Written By: Joseph O'Connor



## INTRODUCTION

If you are replacing the power supply unit, that means that the device is not reliably receiving power and therefore is not operating properly. Before you begin this guide, make sure that you have the proper tools (as listed below), some free time, and a clean and clutter-free space to work. When following the steps to this guide, be sure to be gentle when applying pressure to different panels or components as they may bend or break easily. Otherwise, take your time and make sure to read the steps carefully as you work through your power supply replacement!



### TOOLS:

- [T8 Torx Security Bit Screwdriver](#) (1)
- [Phillips #1 Screwdriver](#) (1)
- [iFixit Opening Tools](#) (1)



### PARTS:

- [PlayStation 3 Super Slim Power Supply](#) (1)

## Step 1 — Power Supply Unit



- Remove the side HDD bay cover by sliding the panel towards the back of the device.

**i** The bay cover is found on the right side of the device.

## Step 2



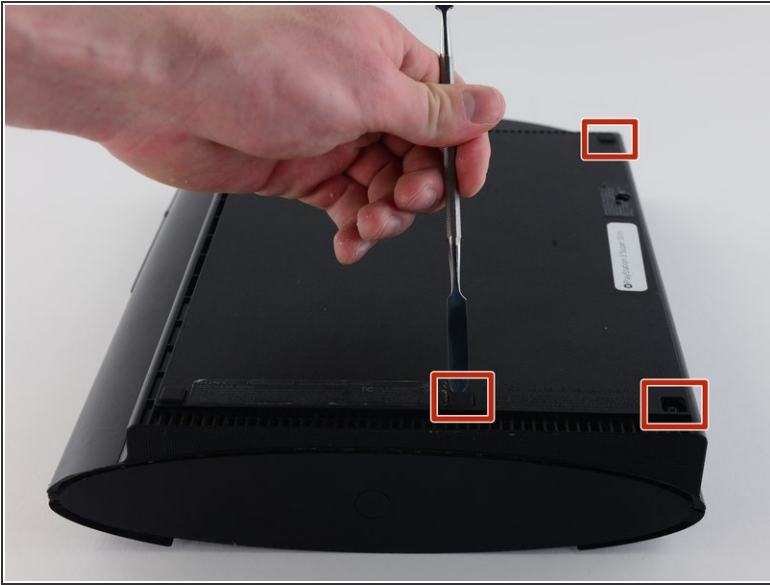
- Remove all three black 9.8mm long screws with a T-8 security screwdriver.
- Remove the blue 7.9mm long screw with a Phillips #1 screwdriver.

## Step 3



- Pull on the tab to remove the HDD.
- ⓘ The HDD should be removed and stored carefully to prevent damage to data.

## Step 4



- On the bottom of the device, pry out the three rubber feet covers with the metal spudger.
- Remove the four black 36.3mm long screws underneath with a Phillips #1 screwdriver.
- ⓘ One screw is located underneath the warranty sticker. This sticker can either be peeled off or punctured through with a screwdriver.



## Step 5



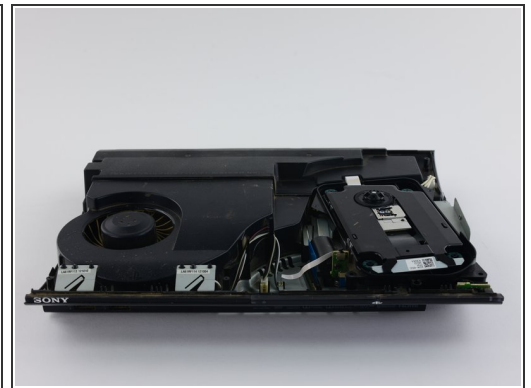
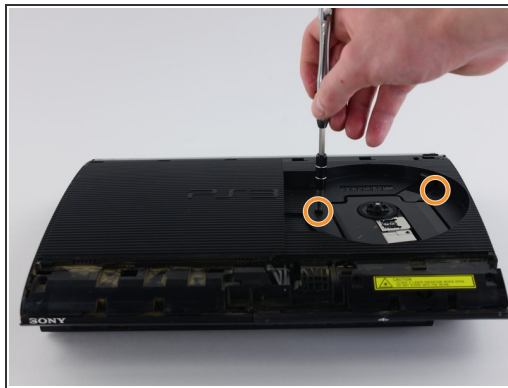
- On the top of the device, unlatch the hook on the furthest right beneath the front panel, lift the panel slightly and apply pressure.
  - Unlatch the second right-side hook by sliding a plastic opening tool in the marked area.
  - Slide the panel to the left to unlatch the rest of the hooks.
- i** This is probably the most difficult part of the procedure. If you cannot unlatch the hook on the front panel, you can attempt to pry all the hooks off. However, do this at your own risk, as these hooks break easily.

## Step 6



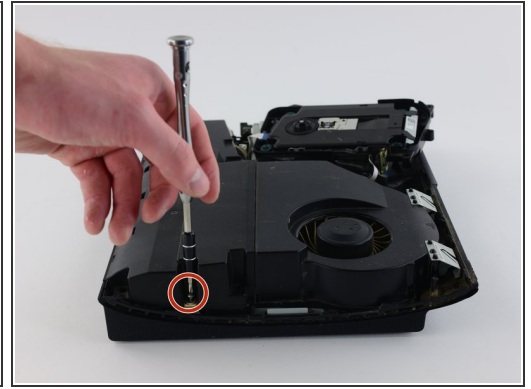
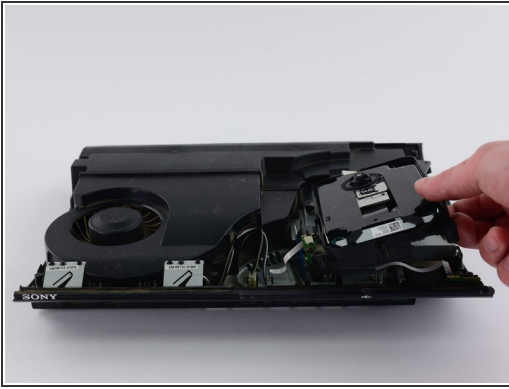
- Remove the back panel by pressing down the tab on the right side of the device, and sliding the panel to the left.

## Step 7



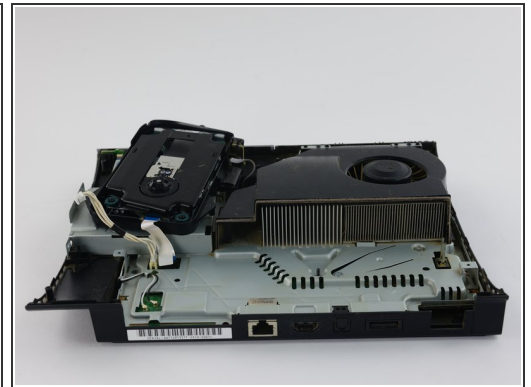
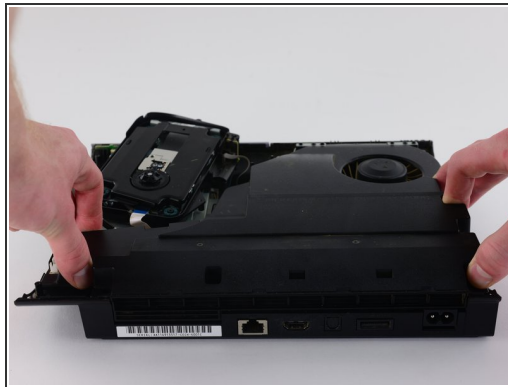
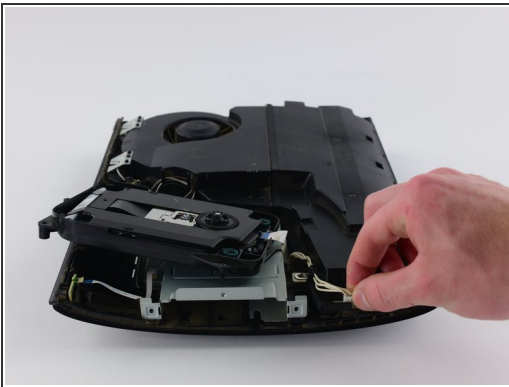
- Remove the five silver 20.8mm long screws with a Phillips #1 screwdriver.
- Remove the two black 9.9mm long screws in the disc reader with a T-8 security screwdriver.
- Remove the top black plastic shell.

## Step 8



- Move the optical drive to the side to reveal one of the silver 8.8mm long screws.
- Remove the two silver 8.8mm long screws on either side with a Phillips #1 screwdriver.

## Step 9



- Remove the cable from the plug and remove the wires from the two plastic hooks.
- ⚠ When removing the cable from the plug, pull on the plastic male connector, not on the wires.
- Remove the power supply unit.

Install the replacement power supply unit. To reassemble your device, follow these instructions in reverse order.