



PowerLead Puto PLD003 Side Panel Replacement

This guide will show you how to remove the PowerLead Puto PLD003 side panel.

Written By: Justin Tew



INTRODUCTION

This guide will show you how to remove the PowerLead Puto PLD003 side panel. The removal of the side panel is necessary, in order to, replace most parts.



TOOLS:

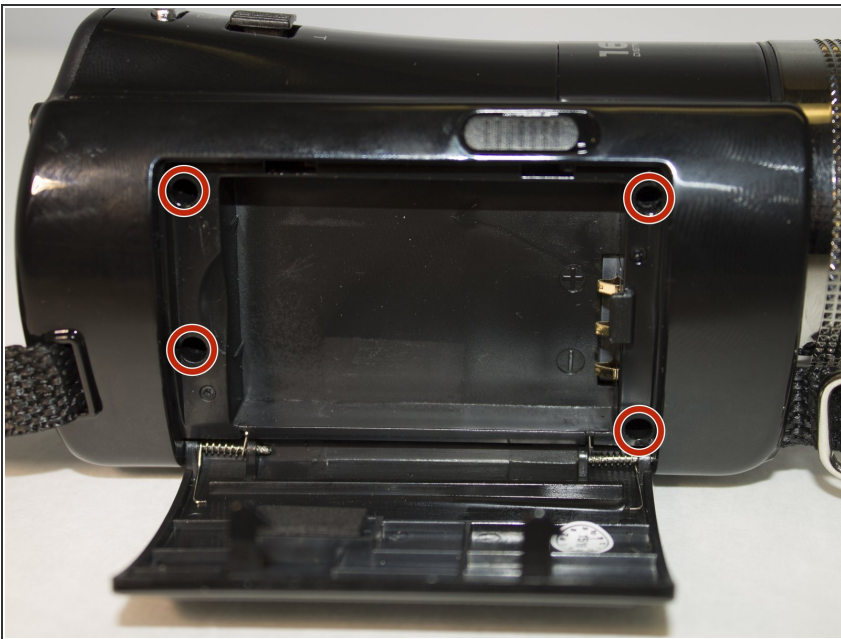
- [Phillips #1 Screwdriver](#) (1)
-

Step 1 — Side Panel



- Slide the battery eject button open to release the battery door.

Step 2



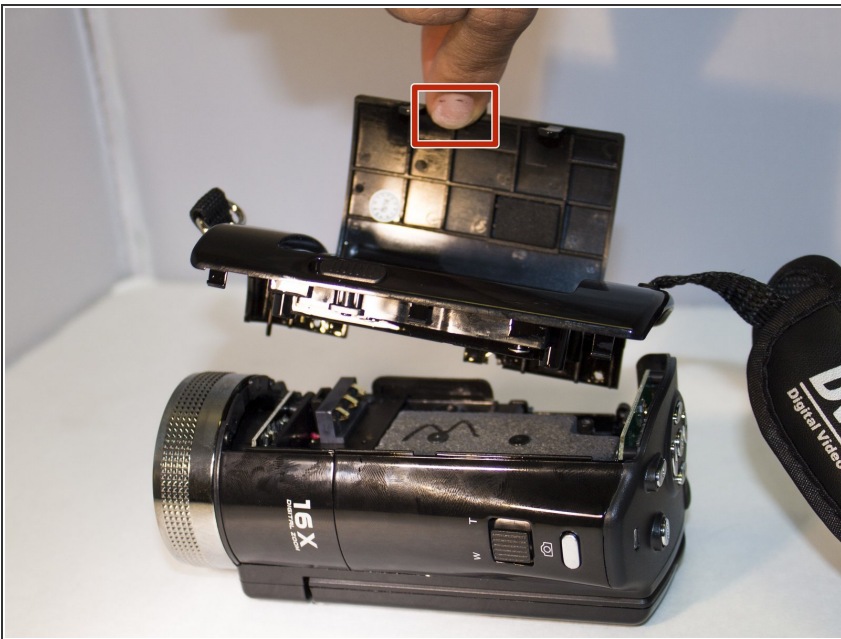
- With the battery door open, carefully remove all four 5 mm Phillips #1 screws.

Step 3



- Rotate the camera so that the underside is facing up.
- Remove the four 5 mm Phillips #1 screws.

Step 4



- Place the camera on a flat surface, with its underside facing you.
- Gently pull up on the side panel to remove it from the camera.

To reassemble your device, follow these instructions in reverse order.