



# KLH Speaker Tweeter and Driver Replacement

Replace the tweeter and driver of a KLH bookshelf speaker.

Written By: Mark Lee Hensley



## INTRODUCTION

Use this guide to replace the tweeter and driver of your KLH bookshelf speaker to make it last longer. Remember to disconnect the speaker before proceeding with any repair.



### TOOLS:

- [Phillips #2 Screwdriver](#) (1)
  - [Phillips #1 Screwdriver](#) (1)
  - [8" Needle Nose Plier](#) (1)
  - [iFixit Opening Tools](#) (1)
-

## Step 1 — Tweeter and Driver



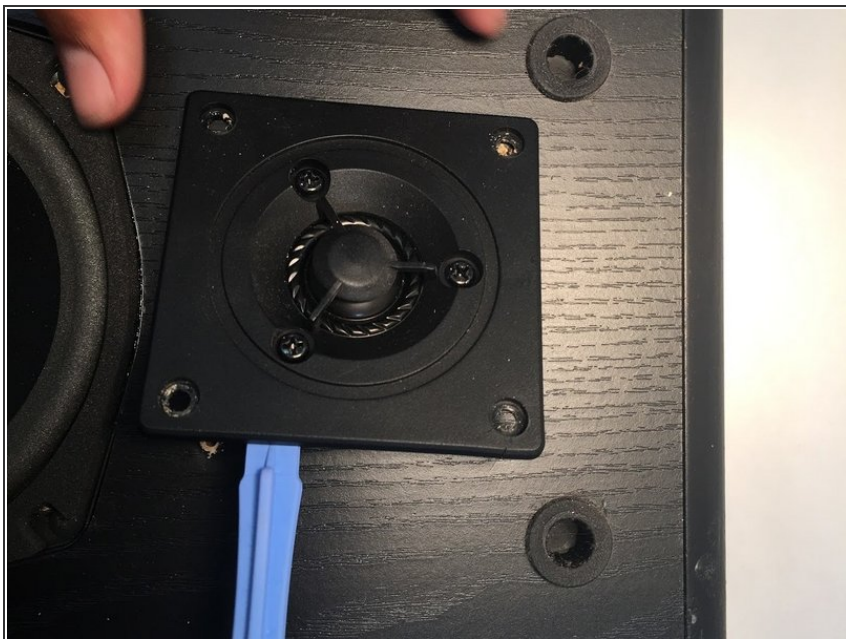
- Remove the front speaker mesh to expose the speakers. The mesh will lift off without the use of tools.

## Step 2



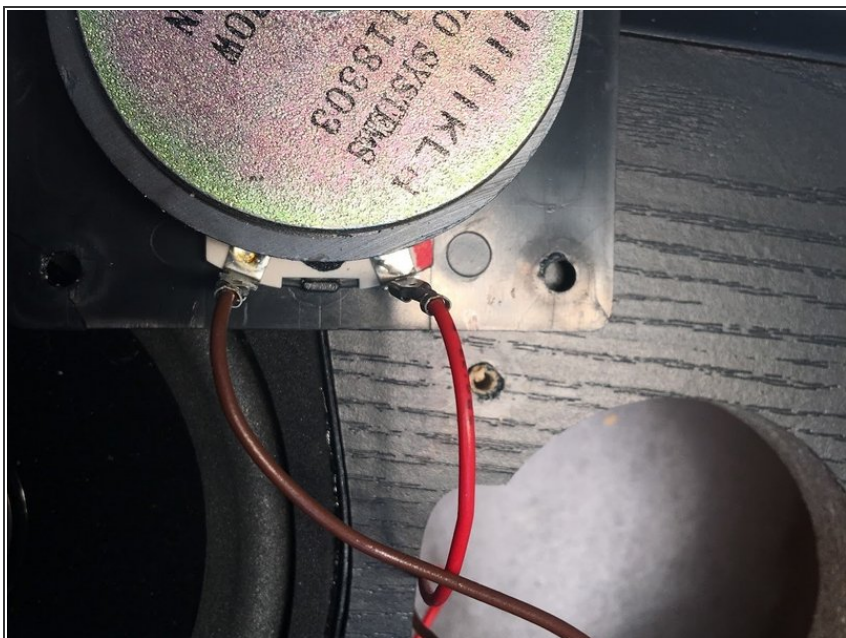
- Once the mesh is removed, begin to remove the screws securing the small upper speaker/tweeter with a #1 Phillips head screwdriver.

### Step 3



- Once the screws have been removed, pry out the small upper speaker with an opening tool.
- ⓘ Take care not to damage the speaker's wooden body while prying the speaker out.

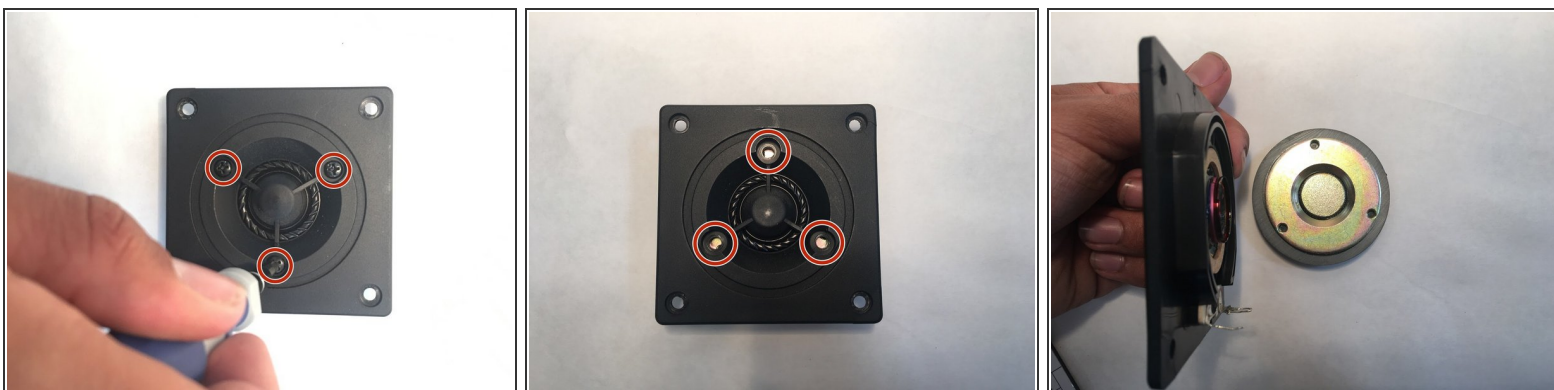
### Step 4



- After you have removed the speaker, disconnect the red and brown wires from the speaker.
- ⓘ You might require needlenose pliers to do this.

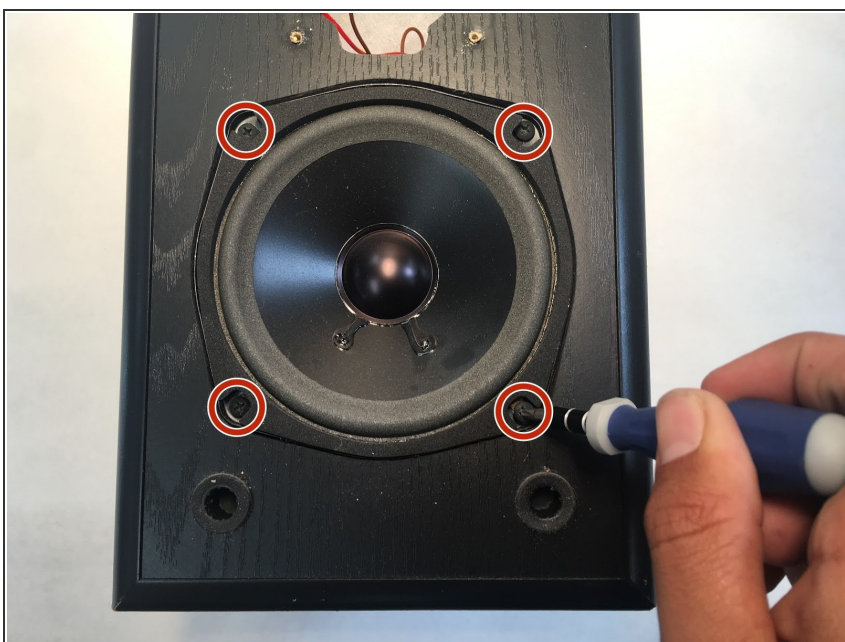


## Step 5



- Remove the speaker from its plastic bezel using a #1 Phillips head screwdriver.

## Step 6



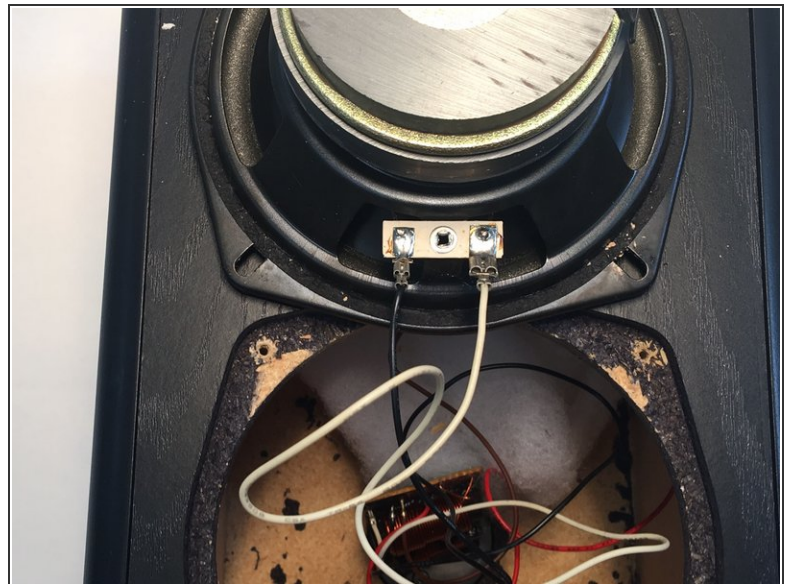
- For the larger bottom speaker, the same steps will be taken to remove the speaker.
- Remove the four screws securing the speaker.

## Step 7



- Once the screws are removed, remove the speaker by either prying up from the top, or pushing the speaker through by pushing on the bottom of the speaker.

## Step 8



- Once the speaker is removed, remove the black and white wires.

To reassemble your device, follow these instructions in reverse order.