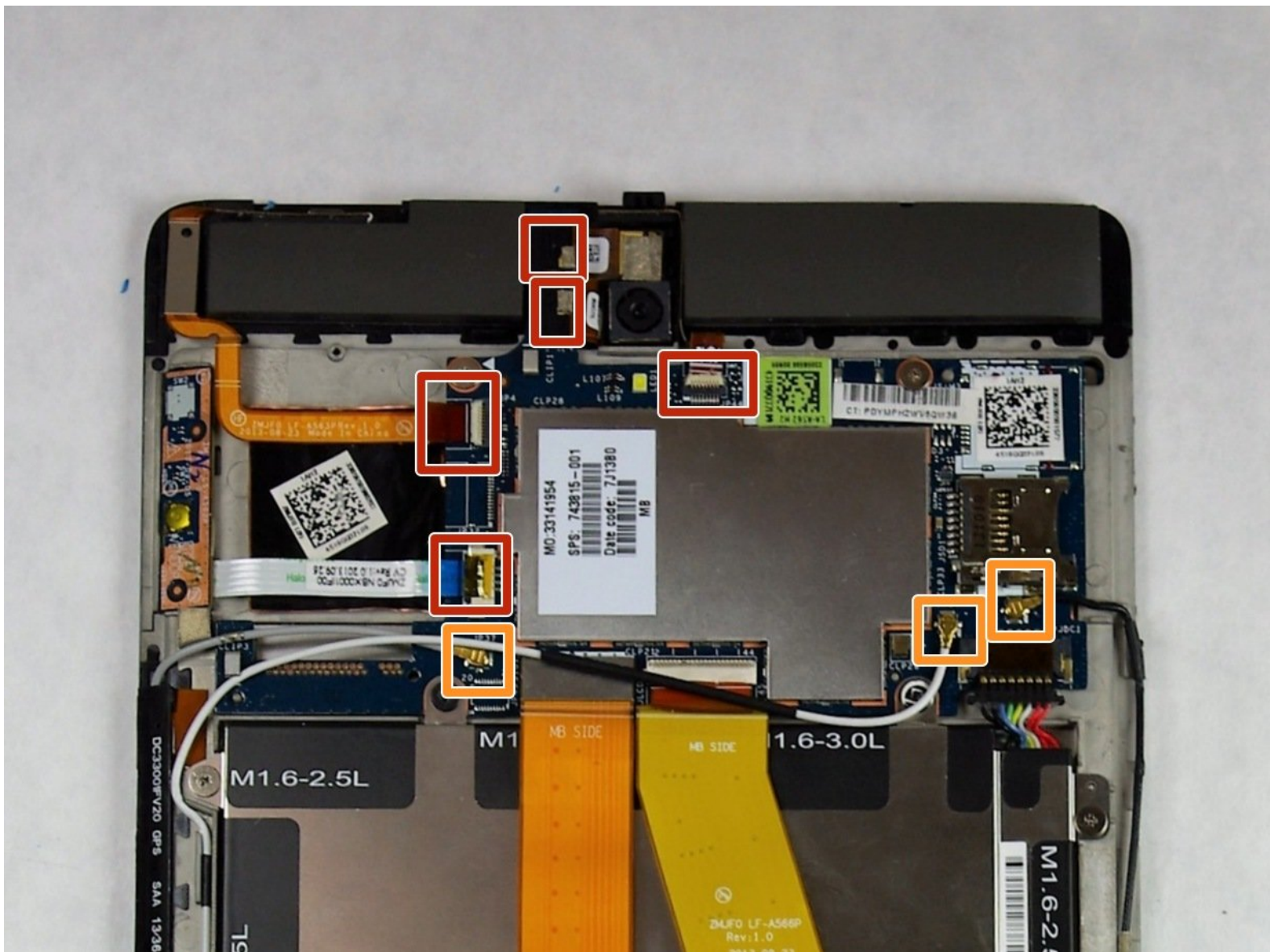




HP Slate 8 Pro Motherboard Replacement

This guide will show you how to replace the motherboard in the HP Sate 8 Pro.

Written By: Andrew Hall



INTRODUCTION

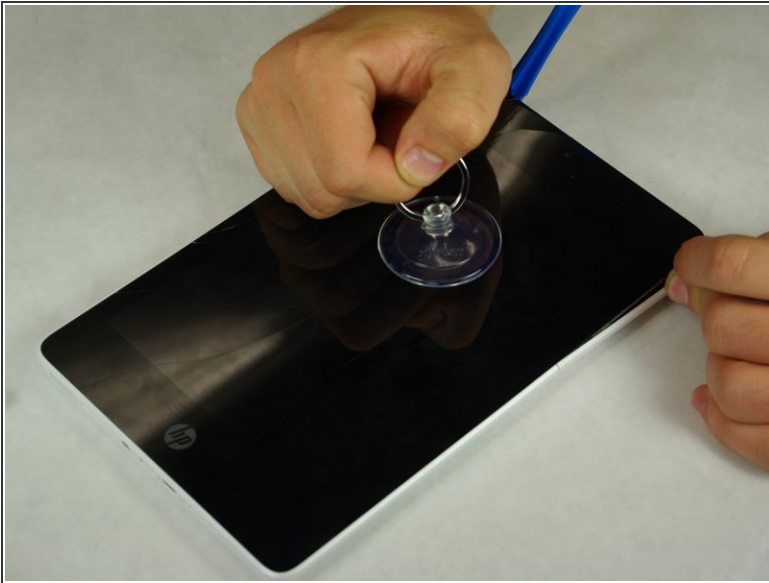
Use this guide to replace your HP Slate 8 Pro motherboard.



TOOLS:

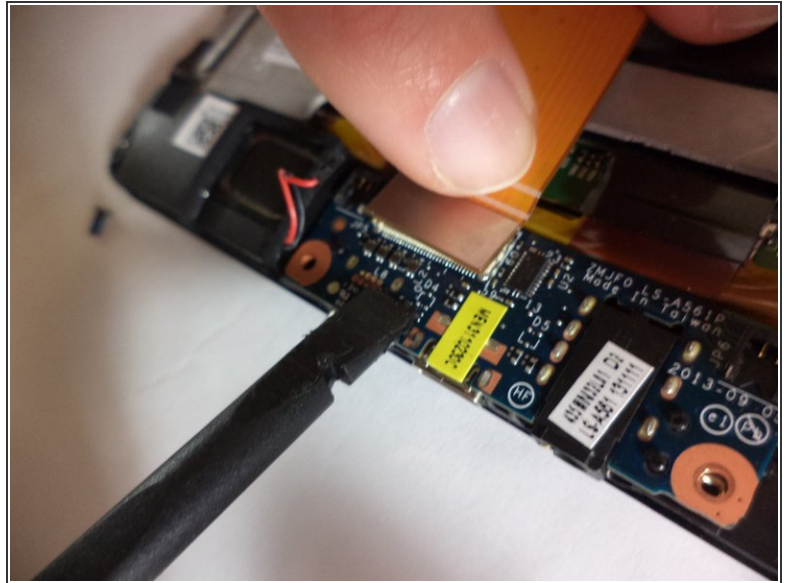
- [iFixit Opening Tools](#) (1)
 - [Phillips #00 Screwdriver](#) (1)
 - [Tweezers](#) (1)
 - [Spudger](#) (1)
-

Step 1 — Remove Back Panel



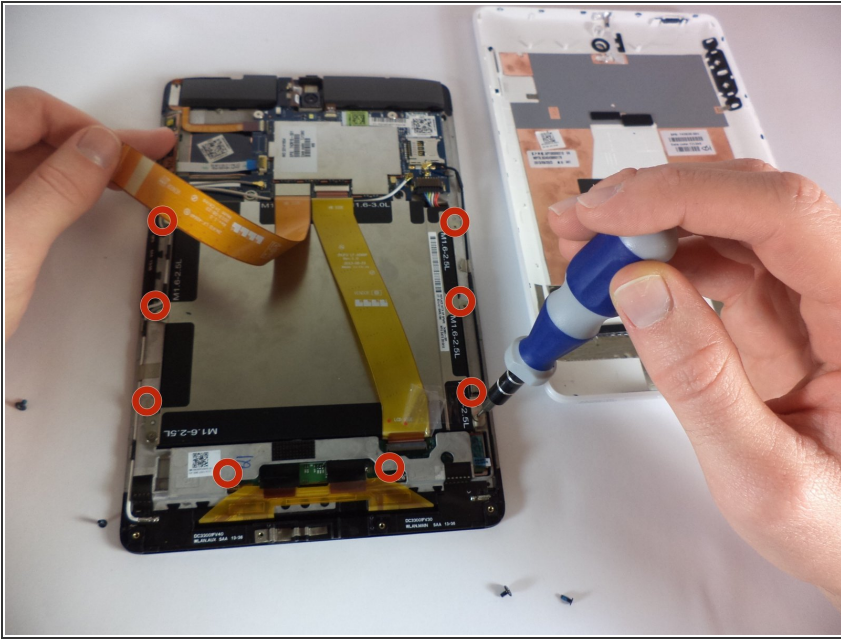
- Secure the suction cup to the center of the device's screen.
- Begin to pull upwards with the suction cup. While pulling, start easing the plastic opening tool into the space between the screen and the device. This will gradually separate the screen from the plastic back panel.

Step 2 — Remove yellow cables



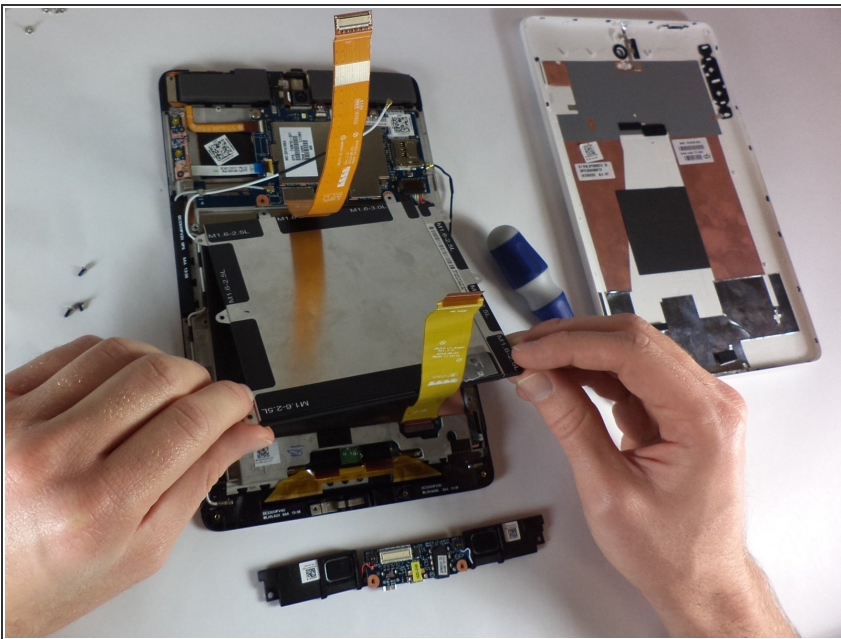
- Use a spudger tool to release the black clips on the two connectors holding the flat, yellow cable in place.
 - Use the tweezers to pull the flat, yellow cable out of its connectors.
- Use the tweezers to disconnect the battery connector from the circuit board.
- Using the spudger tool again, pry up and release the connectors at the ends of the flat, orange cable.
 - Remove the flat, orange cable.

Step 3 — Remove Screws Around Battery



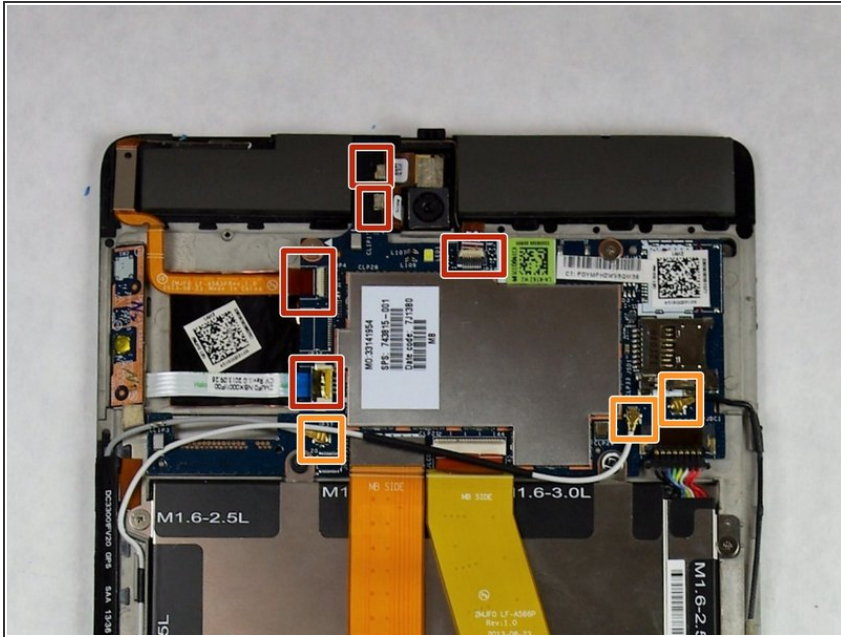
- As shown, the battery is held in place by a total of 8 screws. Use the #00 Phillips screwdriver to remove all 8.

Step 4 — Lift Battery out of Device



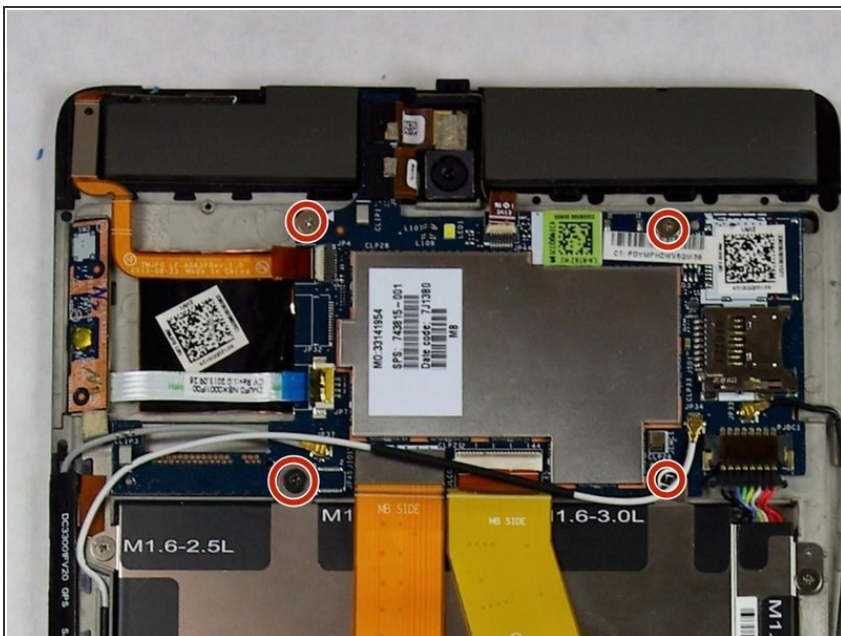
- Grasp the battery and remove it from the device.
- ⚠ Do not attempt to open or tamper with the battery. This could result in injury.

Step 5 — Motherboard



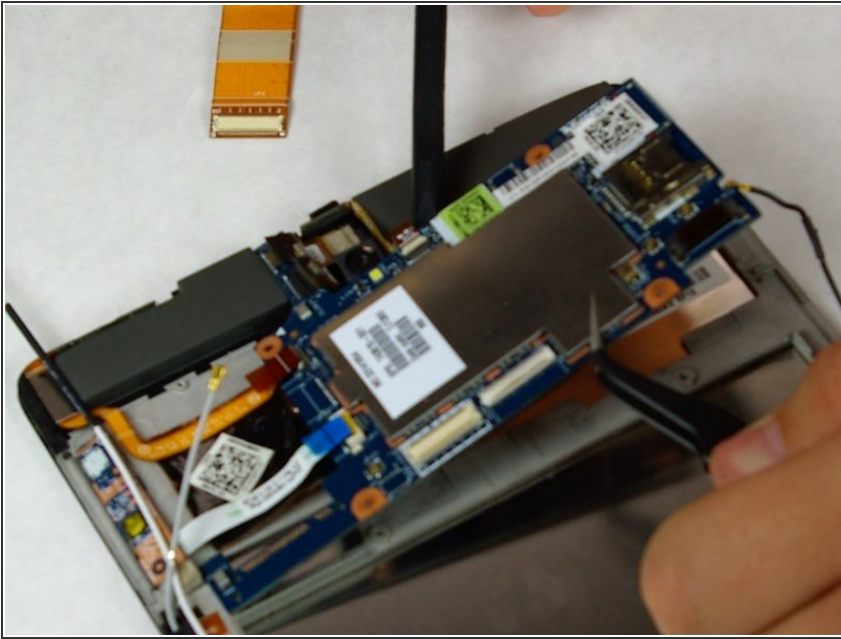
- Disconnect the five connectors.
 - ⓘ With the zero insertion force connectors, be sure to flip up the tab to avoid damaging the connector.
- Use tweezers to disconnect the three antenna connectors

Step 6



- Remove the four PH#00 2.4mm screws that hold in the motherboard in place.

Step 7



- Use tweezers and a spudger to remove the motherboard.
- ⓘ You may have to use a spudger to scrape off the adhesive holding the motherboard in place.

To reassemble your device, follow these instructions in reverse order.