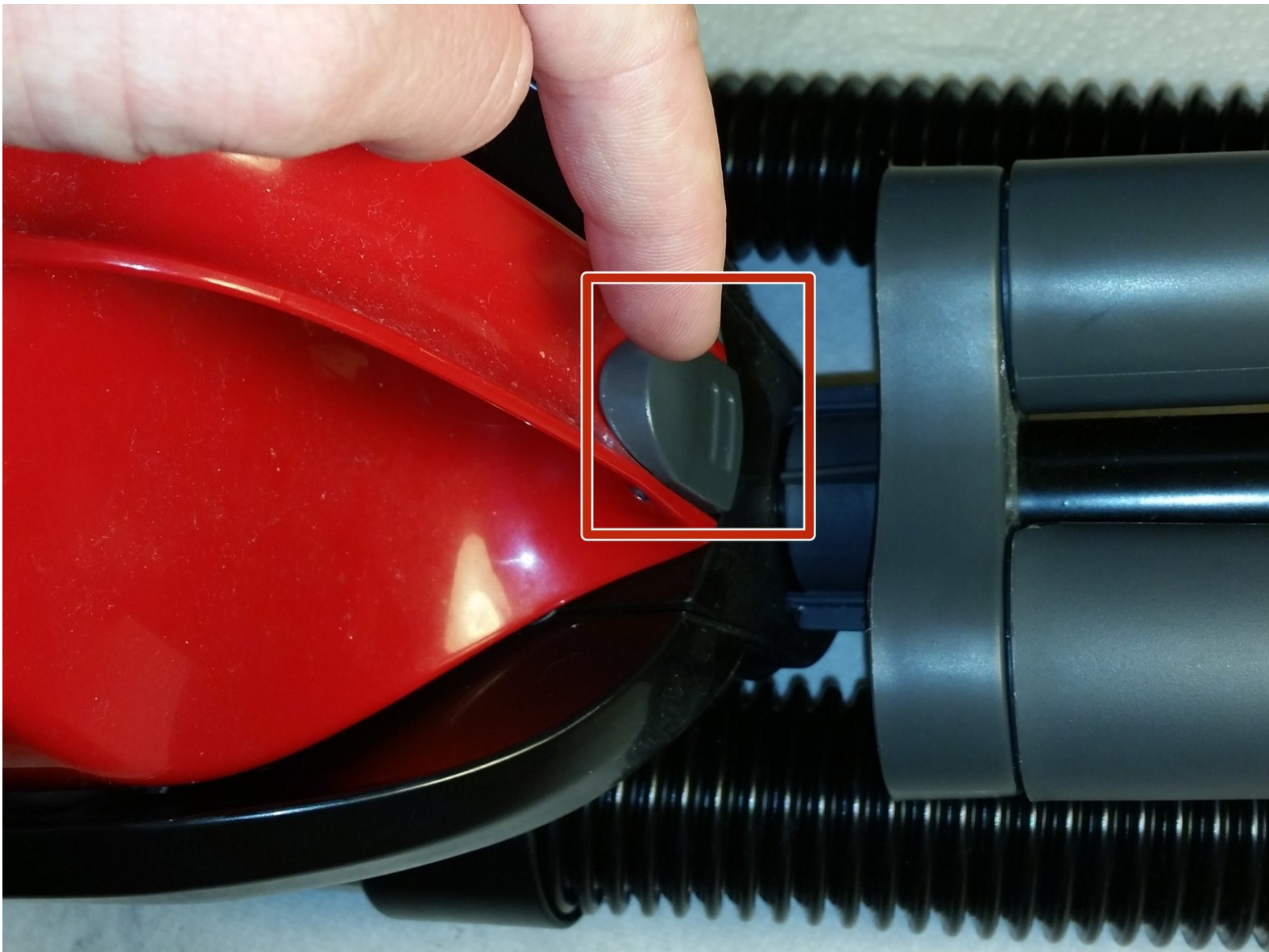




# Dirt Devil UD20005 Suction Path Replacement

In the event of suction loss, the most likely culprit is going to be a dirty suction path, or the parts the air flows through. You may feel it or notice the "Performance Indicator" showing red.

Written By: Kyle Libby



---

## INTRODUCTION

It can be tricky to find all the potential blockages, so this guide will show how to find and then clean all of them.

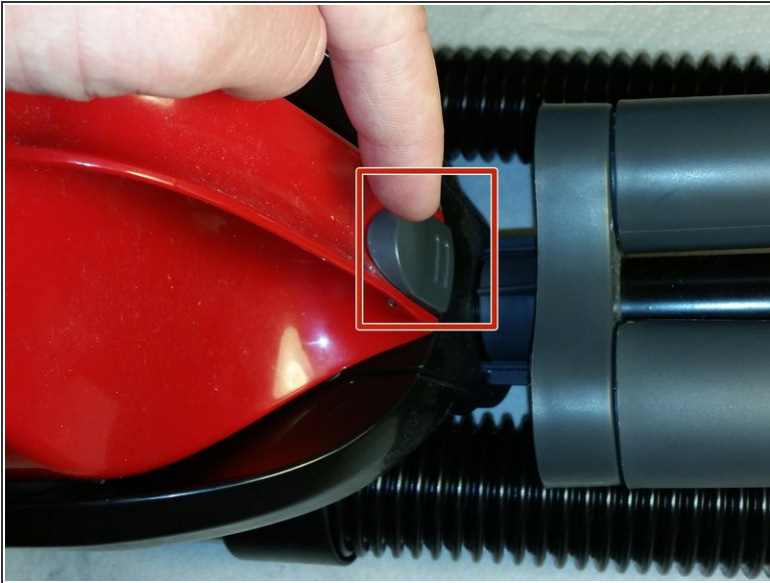
---



### TOOLS:

- [Phillips #2 Screwdriver](#) (1)
  - [Spudger](#) (1)
-

## Step 1 — Removing the Dust Cup



- Locate the dust cup latch and press down.
- Pull outwards and up with the handle to remove the cup.

## Step 2 — Removing the Filter Assembly



- At the bottom of the now vacant dust cup holder, locate the filter assembly and shroud. It is located just above the "Performance Indicator"
- Pull up on the latch indicated and remove the shroud.

⚠ Be aware of any dust that may come off of the HEPA filter.



## Step 3



- Putting the shroud aside, use two fingers on the edges of the filter assembly to lift the rest of it out of its housing.
- ⓘ Note the slot that must line up with the filter during reassembly.

## Step 4



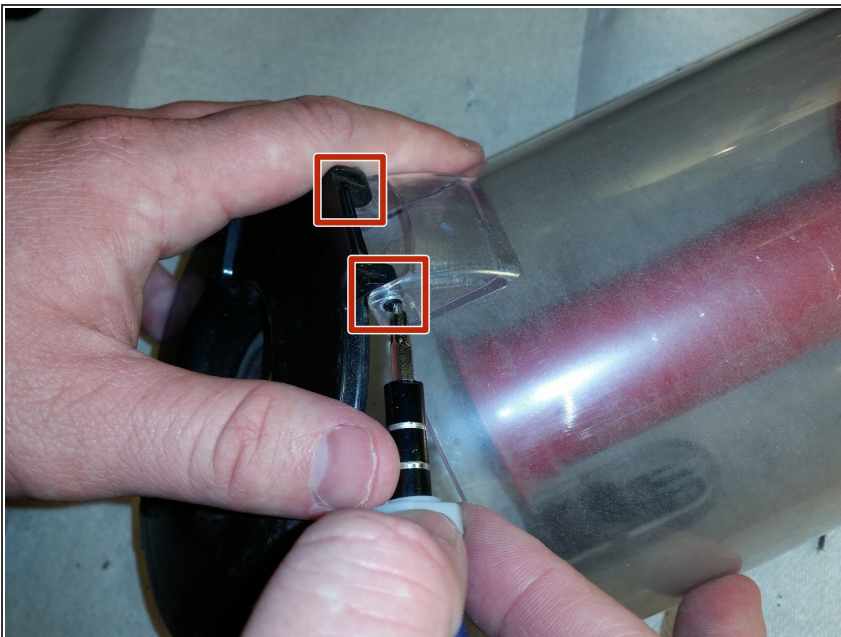
- Use a prying tool, such as a spudger, to separate the foam filter from the larger HEPA filter.
- ⚠ As mentioned previously, a lot of fine dust can kick up during this step, especially if your vacuum is extremely dirty. Consider using a mask if necessary.
- ⓘ The picture shows a pencil being used, which works fine, but take care to not puncture or otherwise damage the foam filter.
- Set both of these aside with the rest of the filter assembly for cleaning later.

## Step 5 — Dust Cup



- Use a Phillips #2 Screwdriver to remove the dust cup shroud.
- ⓘ The shroud is cosmetic, but this will make future steps easier.
- Remove the shroud by sliding it downwards over the dust cup slowly, working it off, being careful not to let it over-extend.

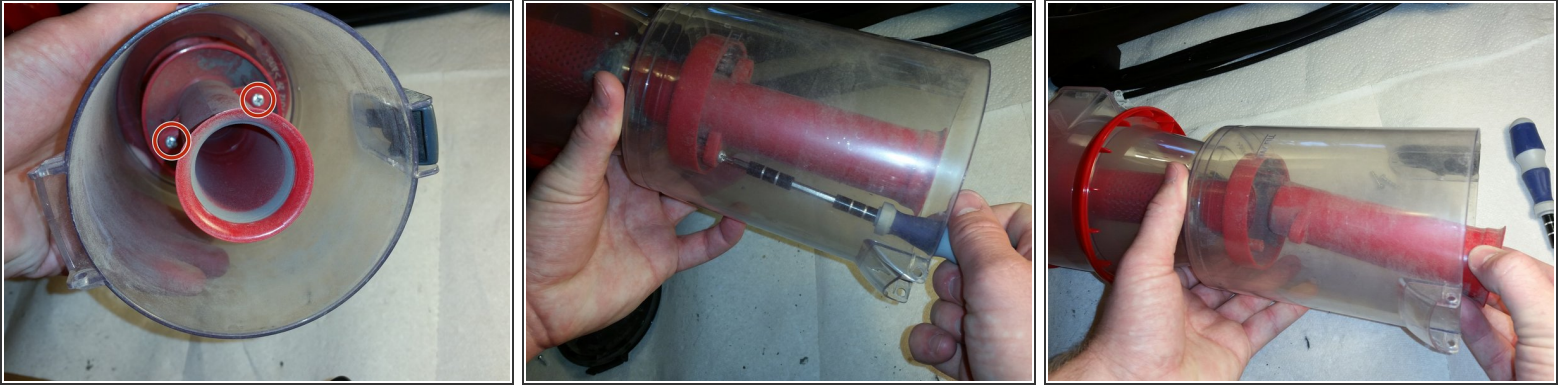
## Step 6



- On the bottom of the dust cup, locate the hinged door. Use the screwdriver to push the two hinge pins in to remove the door.
- Set the door aside for cleaning.



## Step 7



- With the hinged door removed, look into the dust cup and locate the two screws holding the cyclonic funnel in place.
- Use a #2 Phillips Screwdriver to remove them. The funnel will remove easily, place it aside for cleaning when finished.

## Step 8



- Grip the dust collector with your hand firmly, looking for the twist-lock that attaches it to the top of the dust cup.
- Twist it clockwise and remove, setting it aside for cleaning.

## Step 9 — Cleaning the Filter Assembly



- Rinse the filter shroud off in water. Particulates should come off fairly easy, as they should be small. If not, scrub lightly.
- Rinse the foam filter off, working the particulates out with water, being careful not to damage the filter.
- Run water through the HEPA filter in the opposite direction of the airflow. The water should be hitting the side that the foam filter usually is mounted on.
- Place all three items somewhere to dry.

## Step 10 — Cleaning the Dust Cup



- Run water through all the dust cup components, especially the dust collector, removing any lodged particulates or hair.
- ⓘ Make sure all components are completely dry before reassembly. Especially for the filter assembly, this can take up to a day.



To reassemble your device, follow these instructions in reverse order.