



Acer AL1916 Display Replacement

This guide will show the steps required to remove the back cover of the monitor, take out the malfunctioning display, and install the new display.

Written By: Keith



INTRODUCTION

Replacing your display will give you a fresh new screen when your old one is not functioning properly.



TOOLS:

- [Large Needle Nose Pliers](#) (1)
- [Phillips #2 Screwdriver](#) (1)
- [iFixit Opening Tools](#) (1)



PARTS:

- [New Display](#) (1)

Step 1 — Stand



- i** Lay the monitor on a flat surface so that the back is facing up.

Step 2



- Grab the hinge cover with both hands on either side of the stand.
- Squeeze inwards with your thumbs and fingers and lift up to remove the hinge cover.

Step 3



- Remove the four 12.1 mm Phillips #2 screws that hold the stand to the monitor.
- ⚠ Support the monitor while removing the screws to prevent the monitor from falling.
- Lift up to detach the stand.


Step 4 — Outer Case



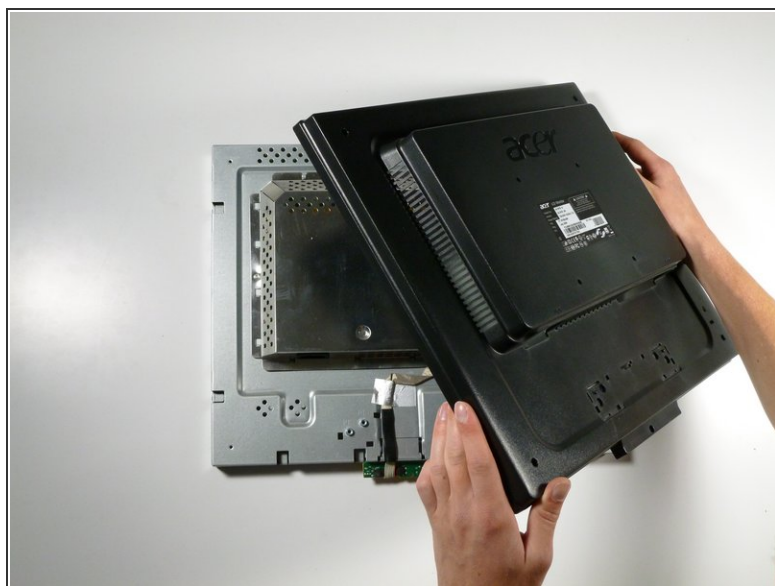
- Remove the five 9.5 mm Phillips #2 screws located around the perimeter of the monitor.

Step 5



- Starting at the corner of the monitor, wedge the small plastic opening tool between the back cover and the display bezel.
 - Tilt the plastic opening tool up to separate the back cover from the display bezel.
 - Continue around the perimeter of the monitor until the display bezel comes off.
-  A reasonable amount of force is necessary to detach the back cover from the display bezel.

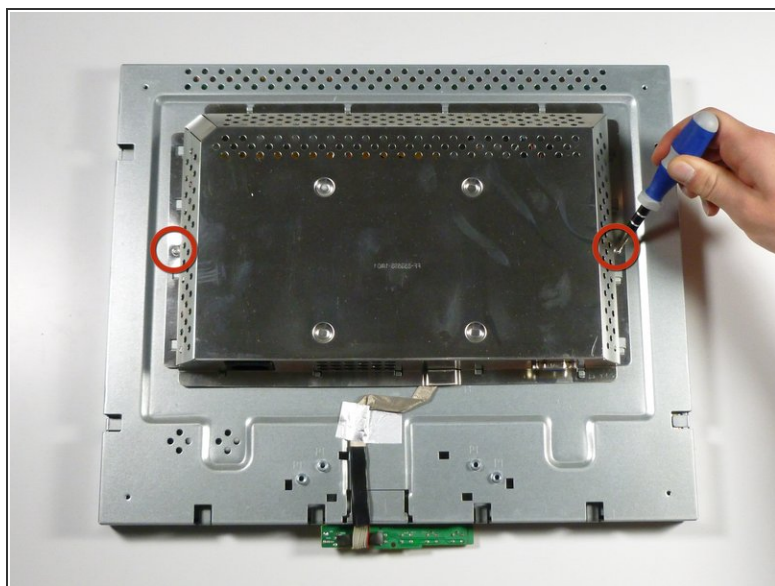
Step 6



i Reposition the monitor so that the back is facing up.

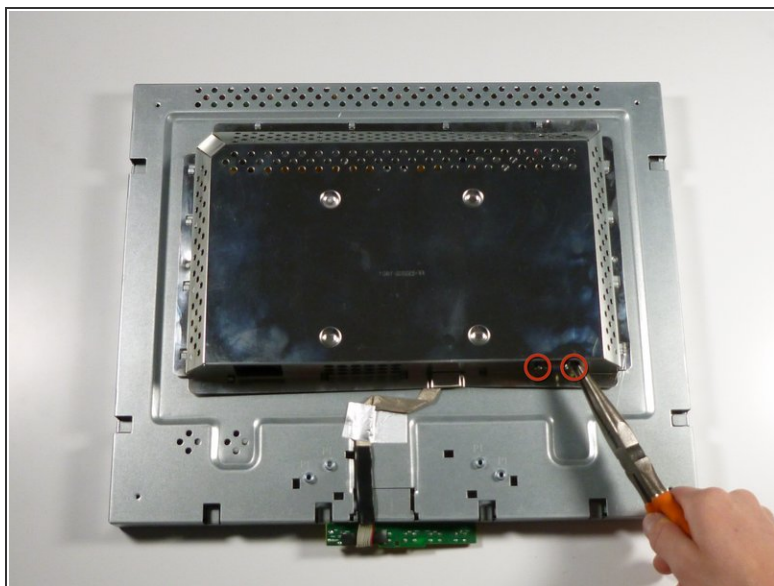
- Grab the corners of the monitor and jiggle them upwards to detach the back cover from the inside of the monitor.
- Lift the back cover up.

Step 7 — EMI Shield



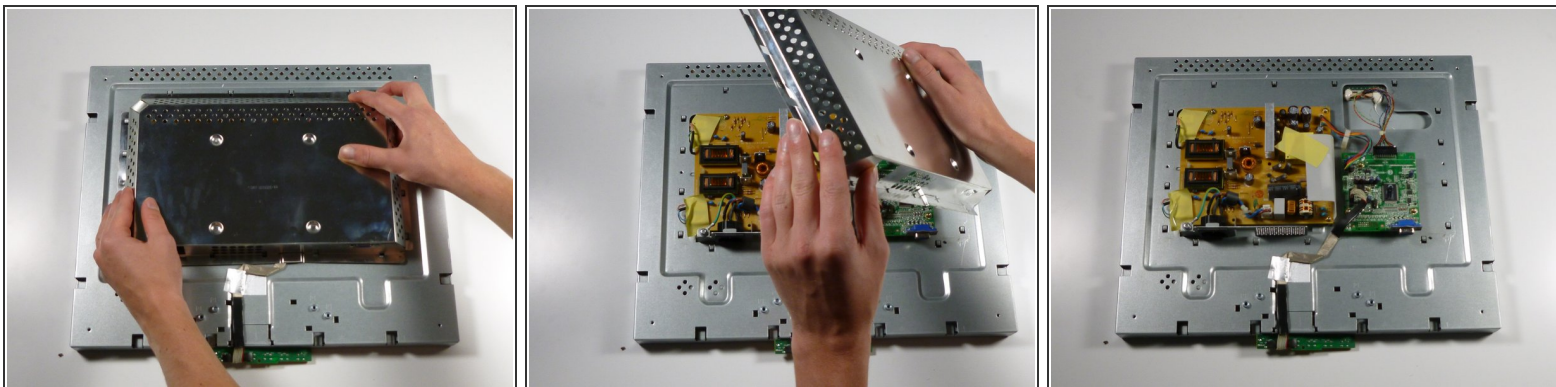
- Remove the two 5.7 mm Phillips #2 screws located on either side of the EMI shield.

Step 8



- Using a nut driver (or if necessary, needle-nose pliers), remove the two nuts on either side of the VGA input.

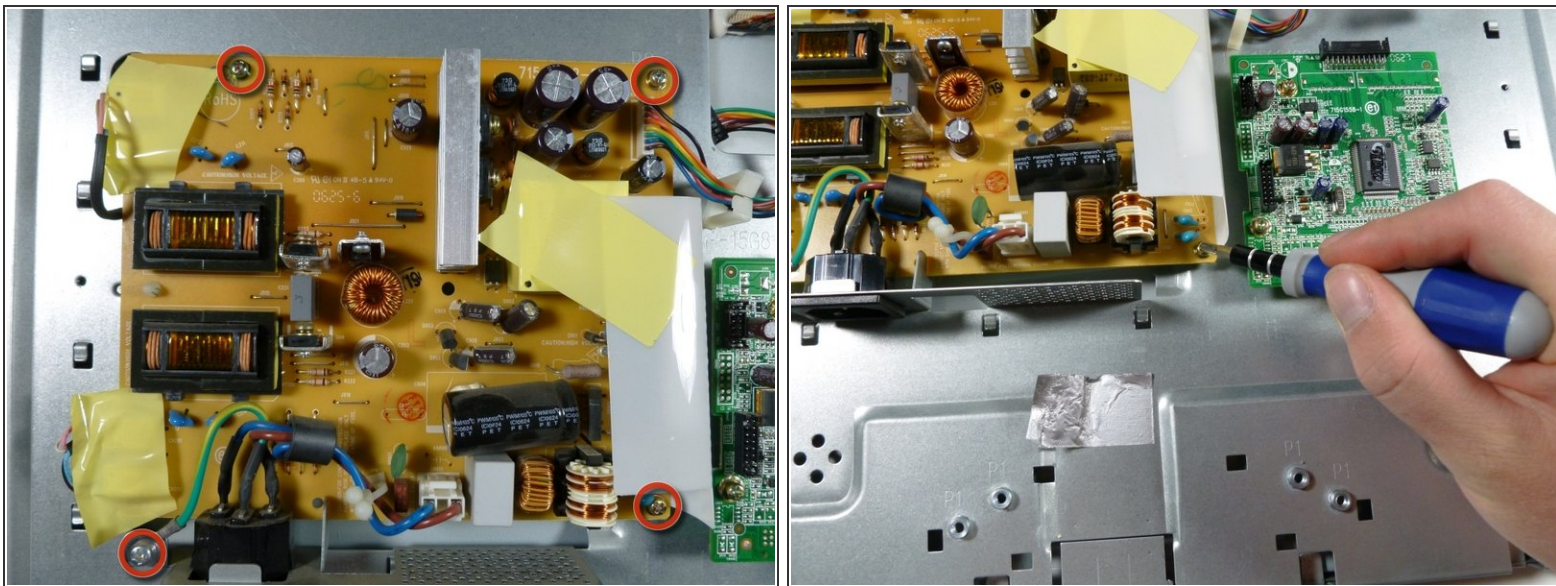
Step 9



- Grab the metal casing by the sides and slide it down towards the bottom of the monitor.
- Lift up to remove the metal casing.

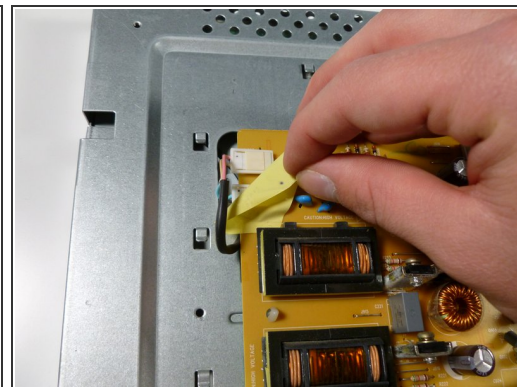
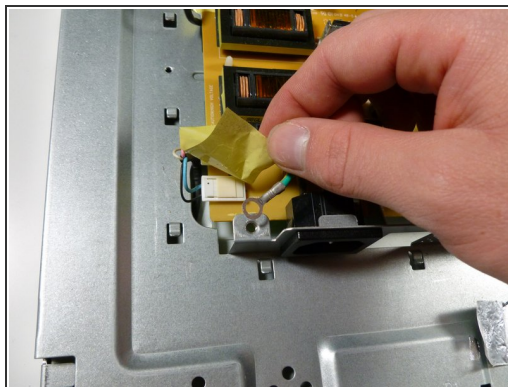
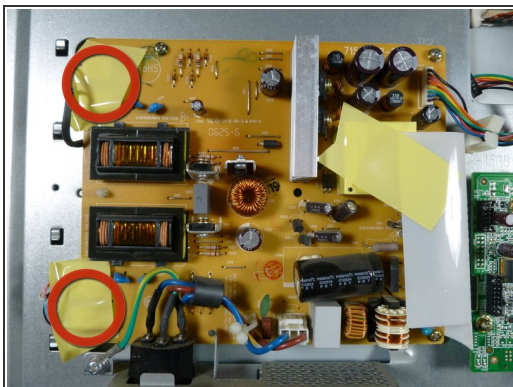
⚠ Beware, metal casing is sharp!

Step 10 — Display



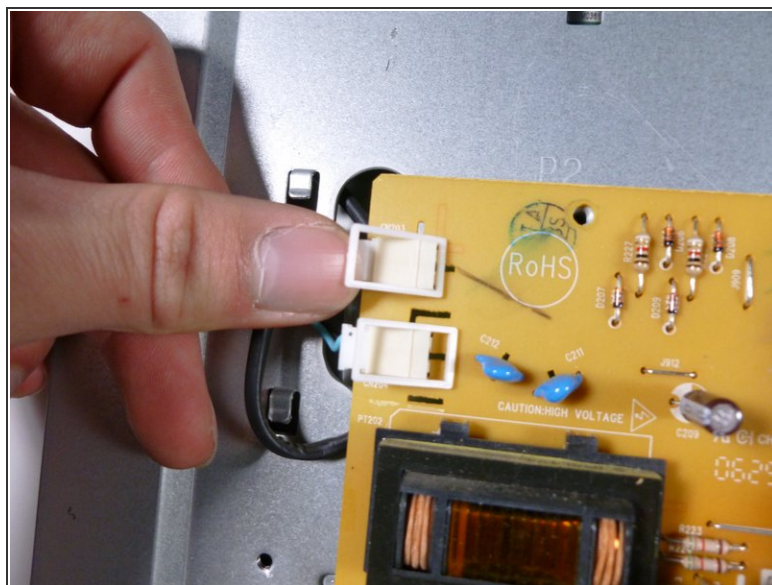
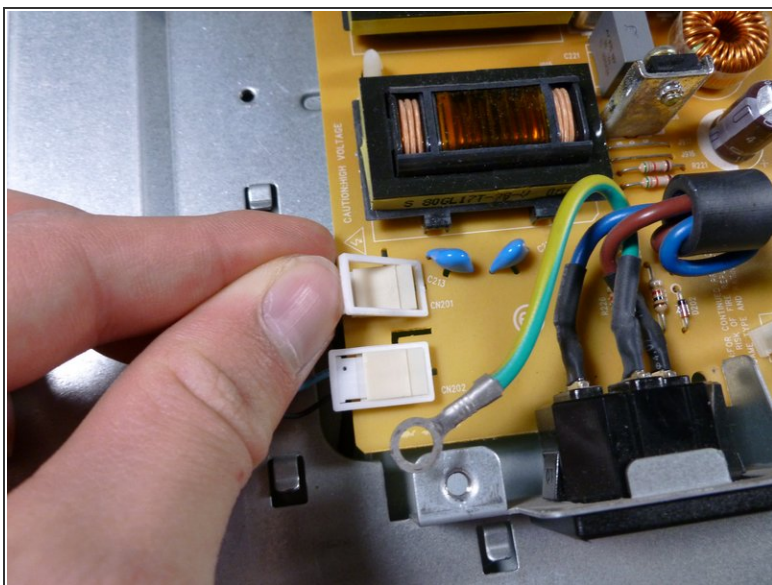
- Remove the three gold 7.5 mm Phillips #2 screws and one silver 8.3 mm Phillips #2 screw from the power supply.

Step 11



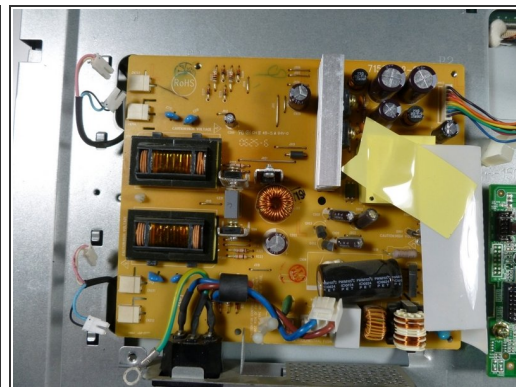
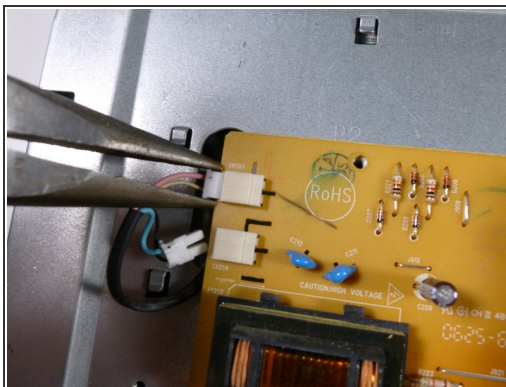
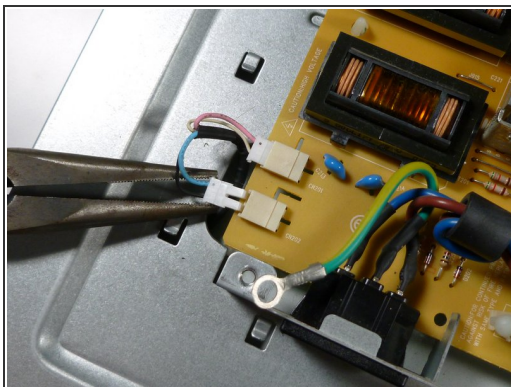
- Remove the two pieces of yellow tape on the left side of the power supply.

Step 12



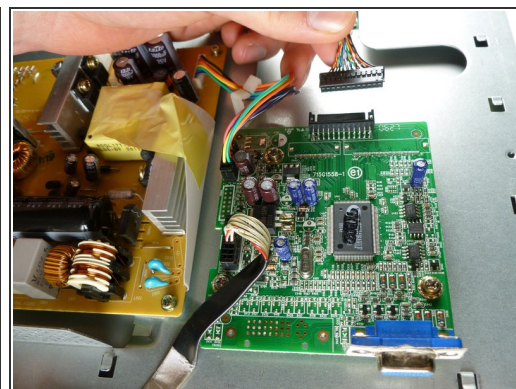
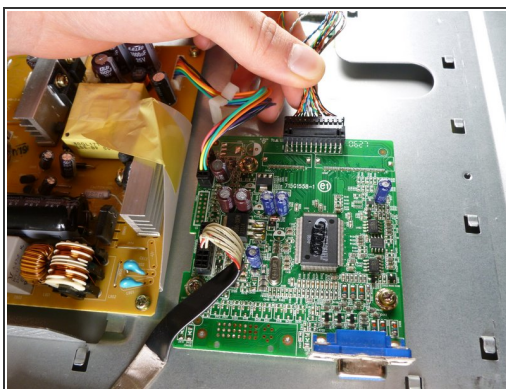
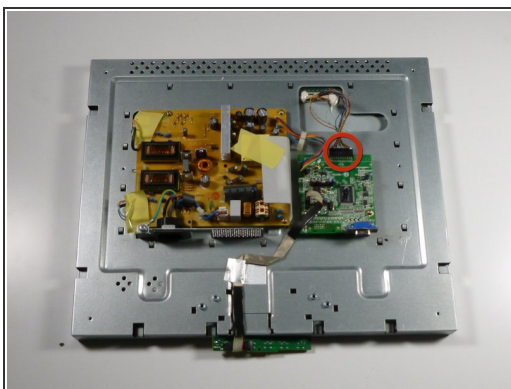
- Remove the four little white clips located underneath the pieces of tape by lifting up on their left side.

Step 13



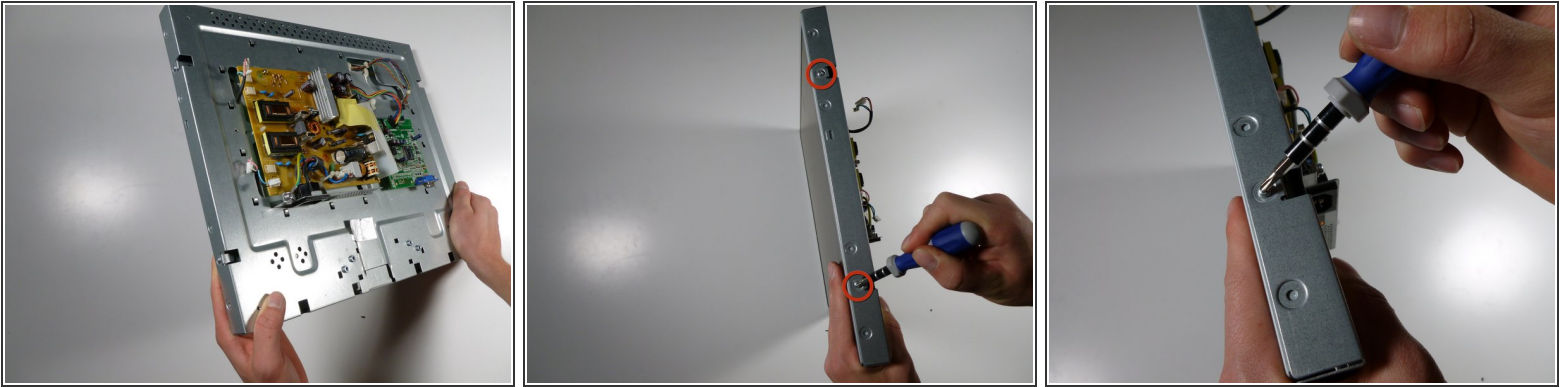
- With the needle-nose pliers, remove the four display connectors by pulling directly left.

Step 14



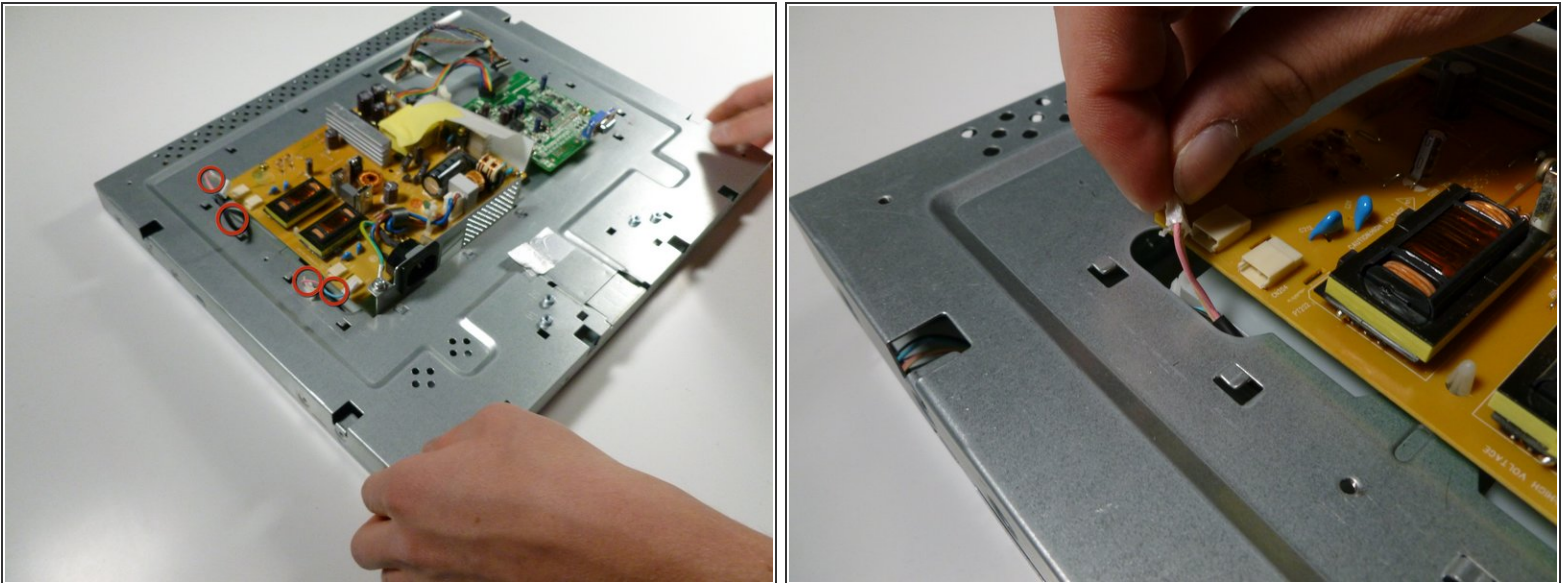
- Remove the display cable located at the top of the circuit board by pulling it out towards the top of the monitor.

Step 15



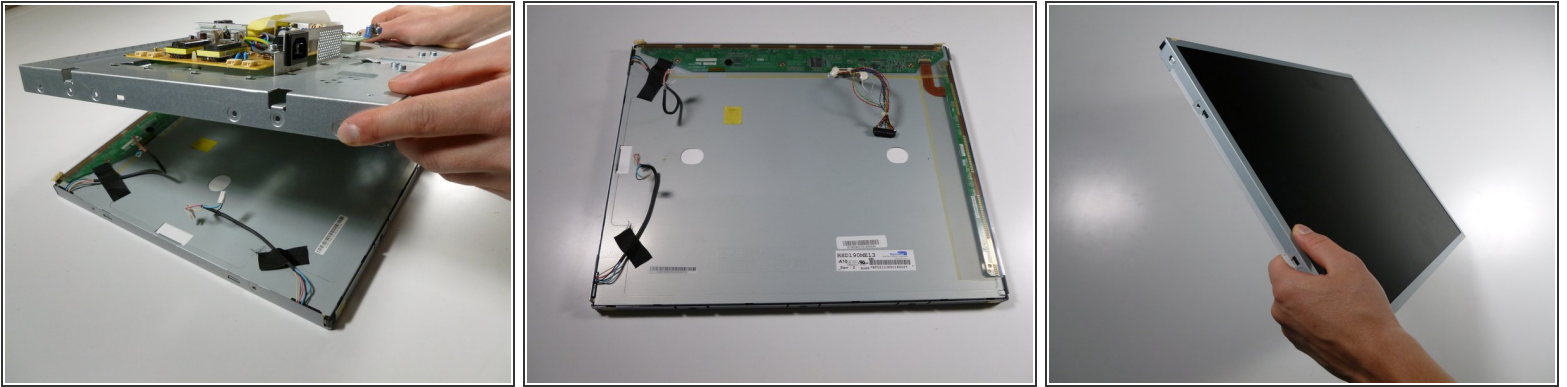
- i Turn the monitor on its side so that the power supply and circuit board are facing to the right
 - Remove the two 6.6 mm Phillips #2 screws located on both sides of the metal casing (four screws total).

Step 16



- i Set the monitor back down so that the power supply and circuit board are facing you.
 - Feed all four of the connector wires down through the metal casing.

Step 17



- Grab the sides of the metal casing and lift up.
- ⓘ Turn the display over to see the front; you are ready replace the broken display with a new one!

To reassemble your device, follow these instructions in reverse order.