



iPad mini 4 LTE Headphone Jack Replacement

Follow the steps in this guide to replace the...

Written By: Evan Noronha



INTRODUCTION

Follow the steps in this guide to replace the headphone jack in your iPad mini 4 LTE.

Parts of this guide were shot with a Wi-Fi model and as such the internals may look slightly different from the LTE model. The procedure is the same for both models except where noted.

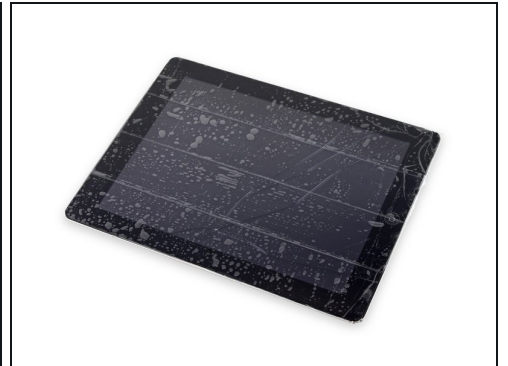
TOOLS:

[iOpener](#) (1)
[iFixit Opening Picks \(Set of 6\)](#) (1)
[Suction Handle](#) (1)
[Phillips #00 Screwdriver](#) (1)
[Spudger](#) (1)

PARTS:

[iPad mini 4 \(Wi-Fi/Cellular\) Headphone Jack](#) (1)

Step 1 — Taping a Cracked Front Panel



- If your display glass is cracked, keep further breakage contained and prevent bodily harm during your repair by taping the glass.
- Lay overlapping strips of clear packing tape over the iPad's display until the whole face is covered. For particularly bad breaks, you may need to lay down two layers.
 - ① This will keep glass shards contained and provide structural integrity when prying and lifting the display.
- Do your best to follow the rest of the guide as described. However, once the glass is broken, it will likely continue to crack as you work, and you may need to use a metal prying tool to scoop the glass out.

 **Protect your eyes!** This procedure **will** cause small pieces of glass to fly directly toward your face. **Do not attempt** without [safety glasses](#).

Step 2 — Opening Procedure



- [Heat an iOpener](#) and apply it to the left edge for two minutes.

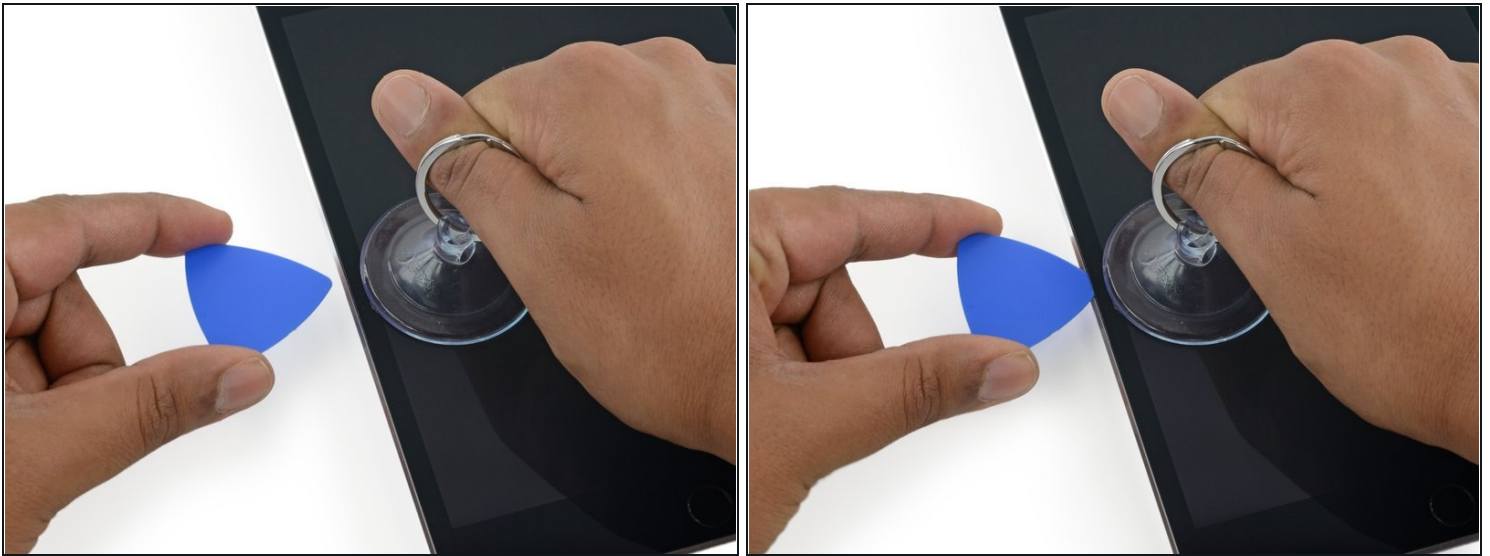
Step 3



- Apply a suction cup halfway up the heated side.
 - Be sure the cup is completely flat on the screen to get a tight seal.
- While holding the iPad down with one hand, pull up on the suction cup with strong, steady force to create a gap.
 - ⓘ Depending on the age of your device, this may be difficult. If you have trouble, apply more heat and try again.

⚠ Be careful to only lift the glass enough to insert an opening pick—any more and you risk cracking the glass.

Step 4



- While holding the glass up with the suction cup, insert the point of an opening pick into the gap between the glass and body of the iPad.

⚠ Don't insert the opening pick any deeper than 2 mm into the side of the display. Inserting the pick deeper than 2 mm could damage the backlight assembly, LCD display, or touchscreen.

Step 5



- Reheat and reapply the iOpener to the left edge for a few minutes.
- ⚠ Be careful not to overheat the iOpener during the repair procedure. Always wait at least ten minutes before reheating the iOpener.**

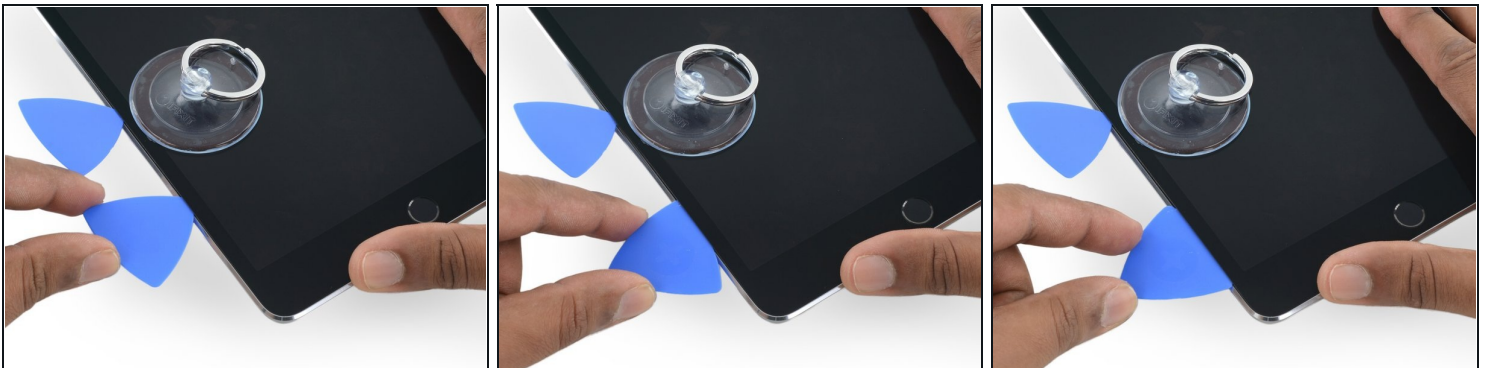
Step 6



- Insert a second opening pick alongside the first and slide the pick down along the edge of the iPad, releasing the adhesive as you go.

⚠ Throughout the rest of the procedure, if you encounter significant resistance while sliding the pick, stop and reheat the section you're working on. Applying too much pressure with the pick can crack the glass.

Step 7



- Continue moving the opening pick down the side of the display to release the adhesive.
- If the opening pick gets stuck in the adhesive, "roll" the pick along the side of the iPad, continuing to release the adhesive.

Step 8



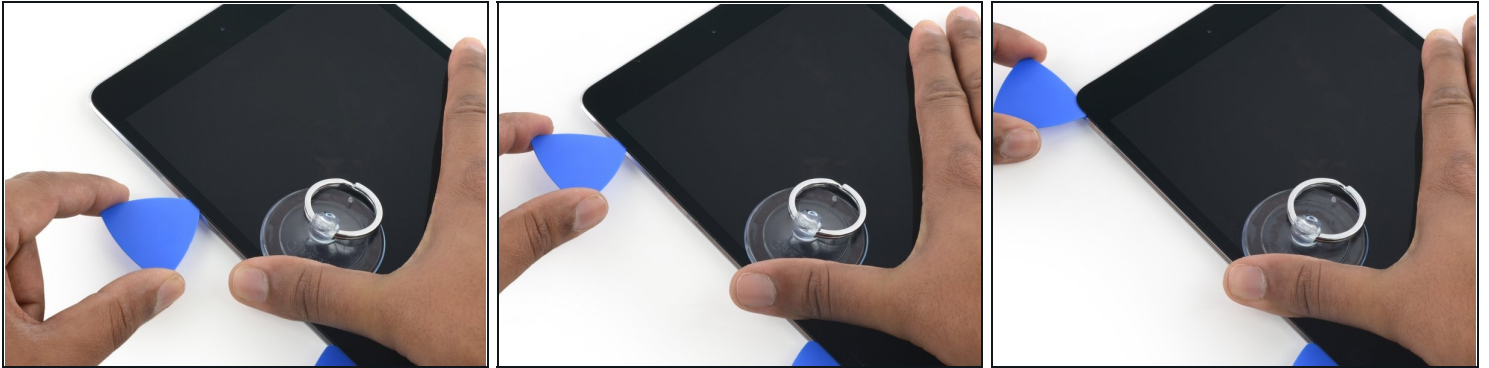
- Take the first pick you inserted and slide it up toward the top corner of the iPad.

Step 9



- Reheat the iOpener and place it on the top edge of the iPad, over the front-facing camera.
⚠ Be careful not to overheat the iOpener during the repair procedure. Wait at least ten minutes before reheating the iOpener.
- If you have a flexible iOpener, you can bend it to heat both the upper left corner and the upper edge at the same time.

Step 10



- Slide the opening pick around the top left corner of the iPad to separate the adhesive.

Step 11



- Slide the opening pick along the top edge of the iPad, stopping just before you reach the camera.
- As you reach the front-facing camera, pull the pick out slightly and continue sliding it across the top edge.

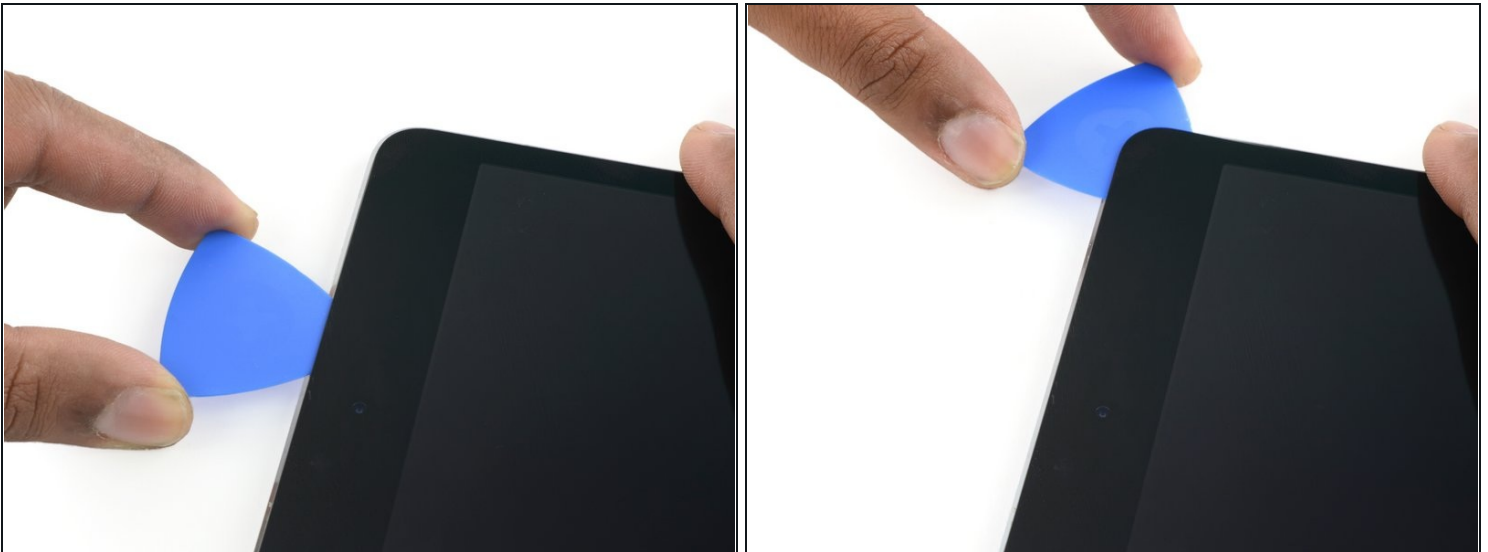
⚠️ Avoid sliding the opening pick over the front-facing camera, as you may smear adhesive onto the lens or damage the camera. The following steps will detail how to best avoid disturbing the front-facing camera.

Step 12



- Leave the opening pick in the iPad slightly past the front-facing camera.
- Take a second pick and insert it to the left of the camera, where the first pick just was. Slide it back to the corner to completely cut any remaining adhesive.
- Leave the second pick in place to prevent the corner adhesive from re-sealing as it cools.

Step 13



- Insert the previous pick deeper into the iPad and slide it away from the camera toward the corner.

Step 14



- Leave the three picks in the corners of the iPad to prevent re-adhering of the front panel adhesive.
- Reheat the iOpener and place it on the remaining long side of the iPad—along the volume and lock buttons.

Step 15



- Insert a new opening pick and slide it down the right edge of the iPad, releasing the adhesive as you go.

Step 16



- Continue sliding the opening pick down the right edge of the iPad, reheating the edge using an iOpener if necessary.

⚠ Be careful not to slice too deep near the bottom right corner, or you risk damaging the display cable.

Step 17



- Leave the opening picks in place and reheat the iOpener.
⚠ Remember not to overheat the iOpener—no more than once every ten minutes.
- Set the reheated iOpener on the home button end of the iPad and let it rest for a few minutes to soften the adhesive beneath the glass.

Step 18



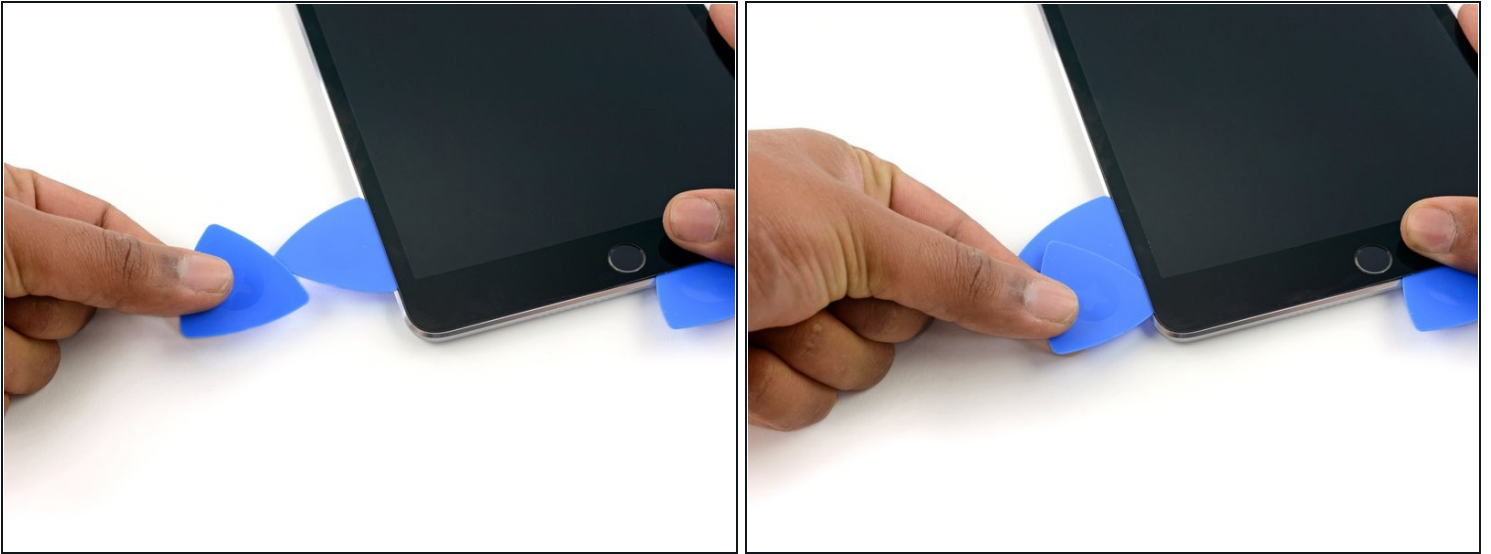
- Insert a new opening pick at the bottom right corner of the display, below the last opening pick you used to slice down the right edge.
- Rotate the new pick around the lower right corner of the device.

Step 19



- Slide the pick from the bottom right corner along the lower edge of the device. Stop about half an inch shy of the home button.

Step 20



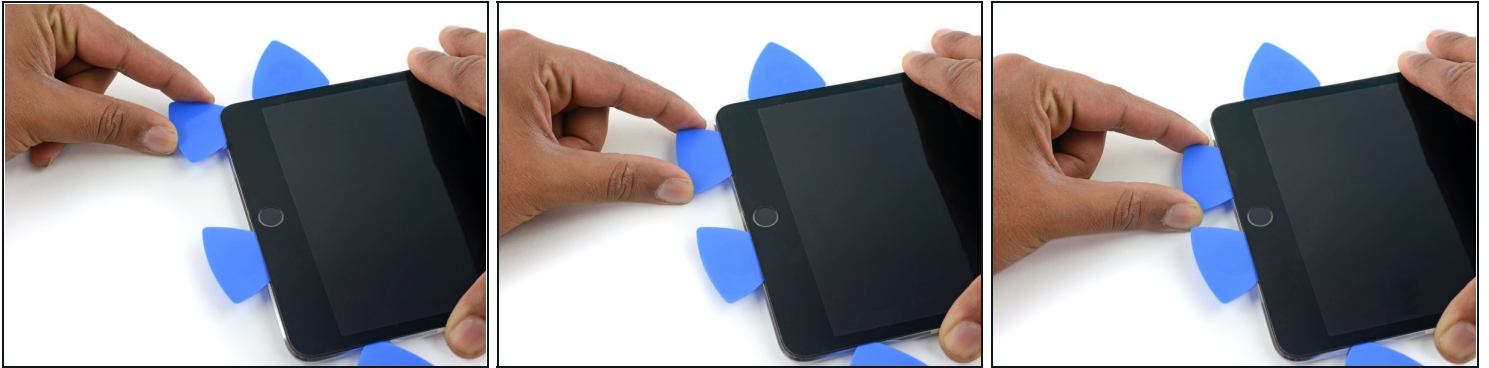
- Insert a final opening pick at the lower left corner of the iPad, directly below the existing one.

Step 21



- Slide the pick around the lower left edge of the iPad.

Step 22



- Continue sliding the pick at the lower left edge of the display toward the center of the iPad, until it is roughly half an inch from the home button.

Step 23



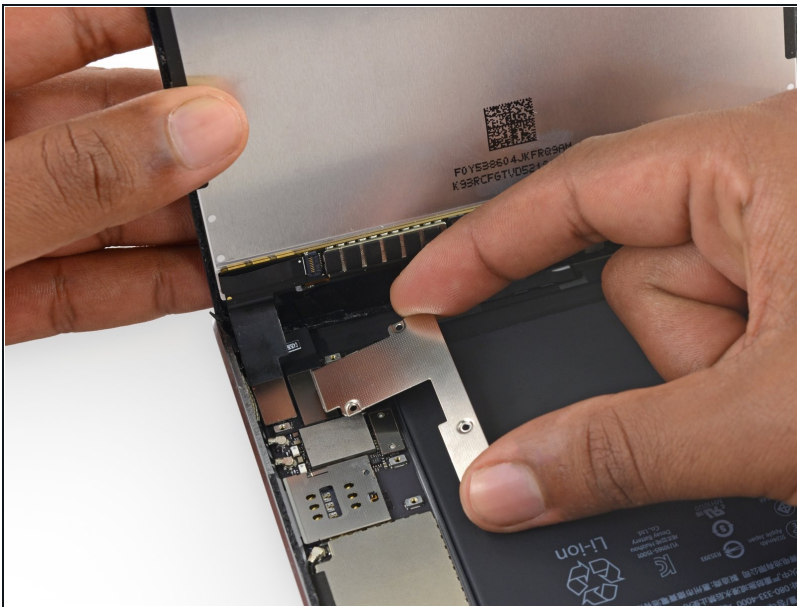
- Twist the two picks at the top edge of the iPad to break up the last of the adhesive holding the display assembly in place.
- Lift the display from the top edge to open the device.

Step 24 — Battery Connector



- i** To avoid stressing any cables, hold the display assembly perpendicular to the body of the iPad until it is disconnected.
- Remove the four 1.2 mm Phillips screws over the battery/display connector bracket.

Step 25



- Remove the battery/display cable bracket.

Step 26



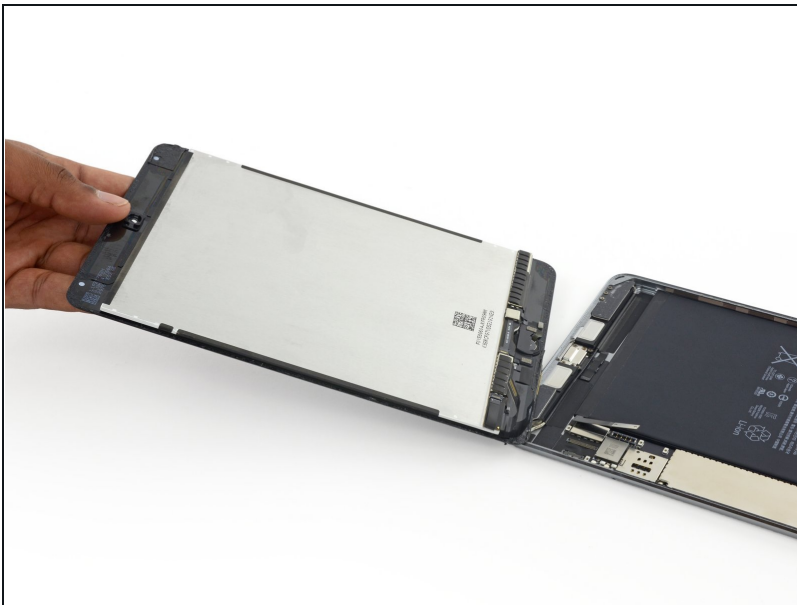
- ⚠ When disconnecting any press connectors from the logic board, be sure to lift the connector straight up to avoid ripping the socket off the board.
- Use the flat tip of a spudger to disconnect the battery connector from its socket on the logic board.
 - ① Bend the battery connector ribbon cable up slightly to prevent it from making contact and powering on the iPad.

Step 27 — Display Assembly



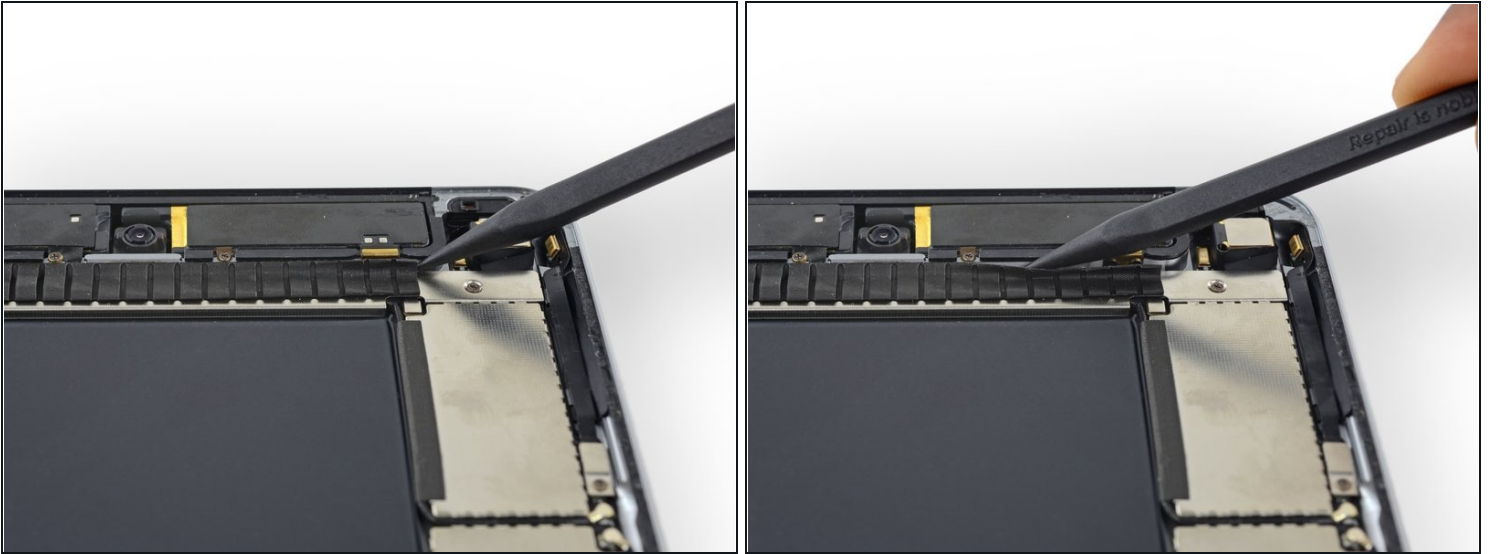
- Use the pointed end of a spudger to disconnect the display data connector from its socket on the logic board.
- Use the pointed end of a spudger to disconnect the digitizer cable connector from its socket on the logic board.
- ☑ When reconnecting these, press down from one end of the connector to the other. If you press in the middle of the connector, you may bend it, causing damage or a poor connection.

Step 28



- Remove the display assembly.
- ☑ To reinstall your display assembly, you will need to replace the display adhesive. Use our [display adhesive application guide](#) to reapply your display adhesive and reseal your device.

Step 29 — Upper Component Bracket



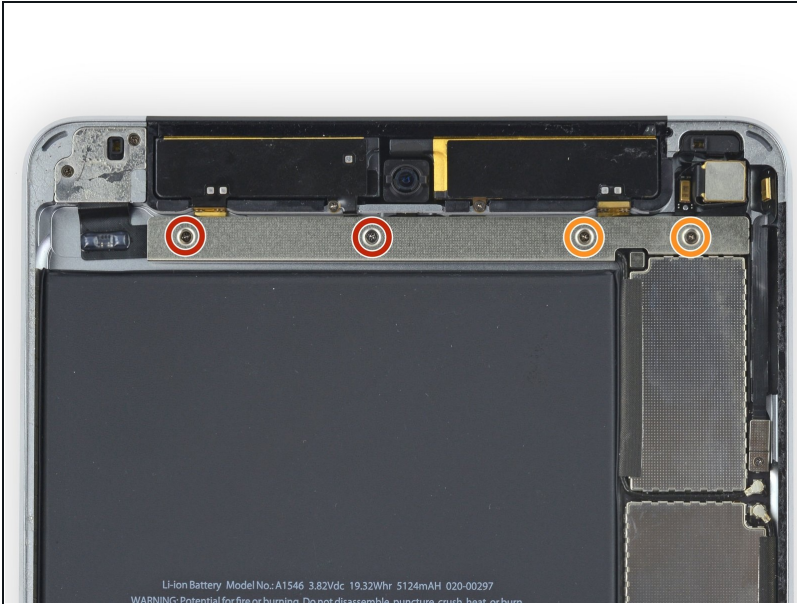
- Run the pointed end of a spudger between the looped tape and the plastic cellular antenna housing to make it easier to peel the tape up.

Step 30



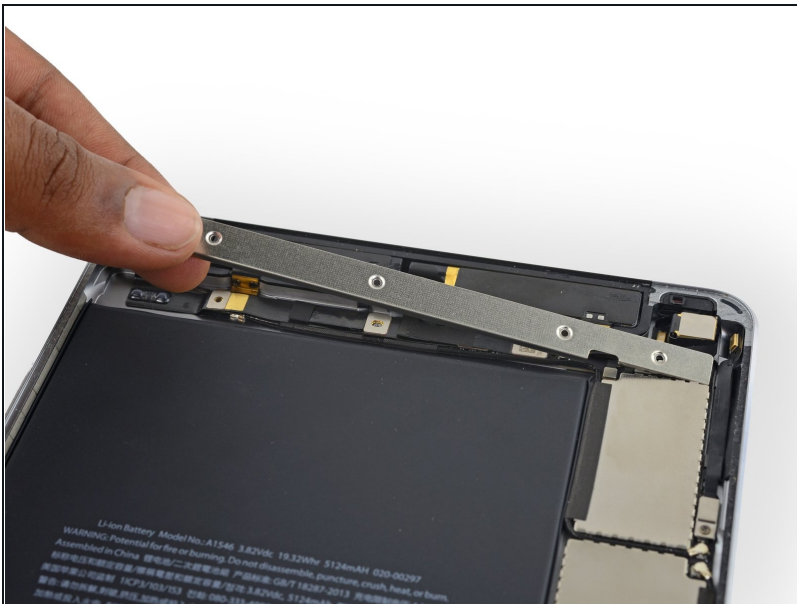
- Use [tweezers](#) to peel up the looped tape adhered over the upper component cable bracket.

Step 31



- Remove the following four Phillips screws holding the upper component bracket in place:
 - Two 2.1 mm screws
 - Two 1.2 mm screws

Step 32



- Remove the upper component cable bracket.

Step 33 — Headphone Jack



- Use [tweezers](#) to remove the small piece of tape covering the the left antenna ribbon cable ZIF connector.

Step 34



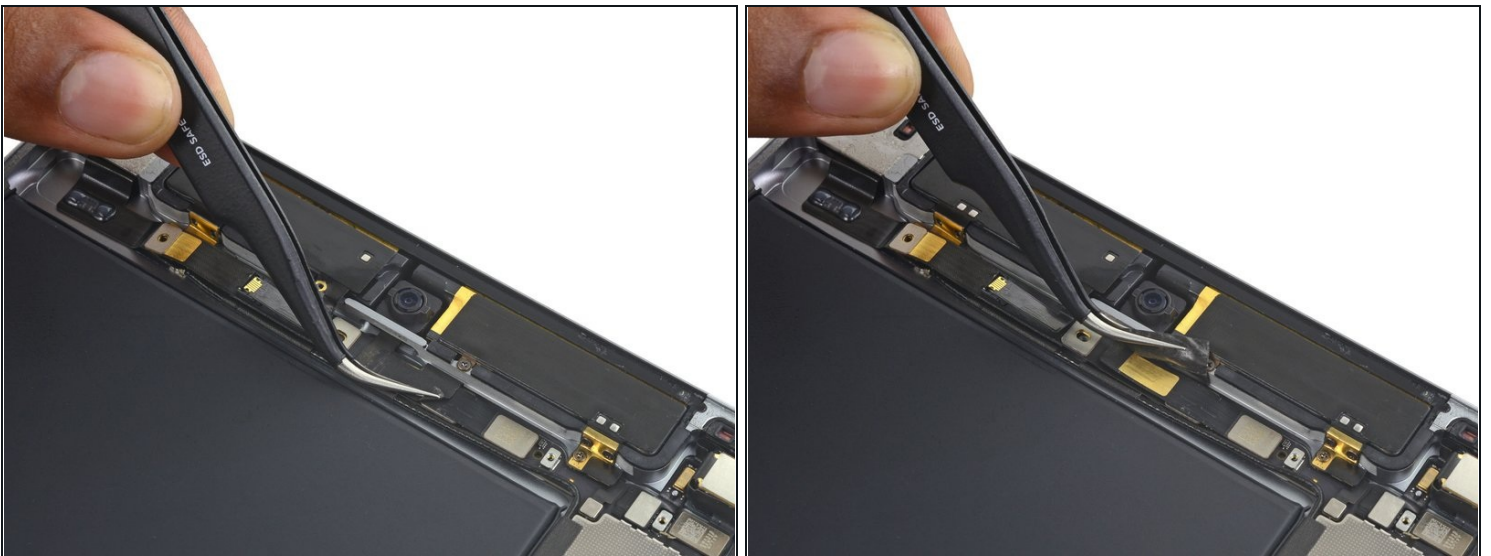
- Use the flat end of a spudger to flip up the retaining flap on the left antenna ribbon cable ZIF connector.

Step 35



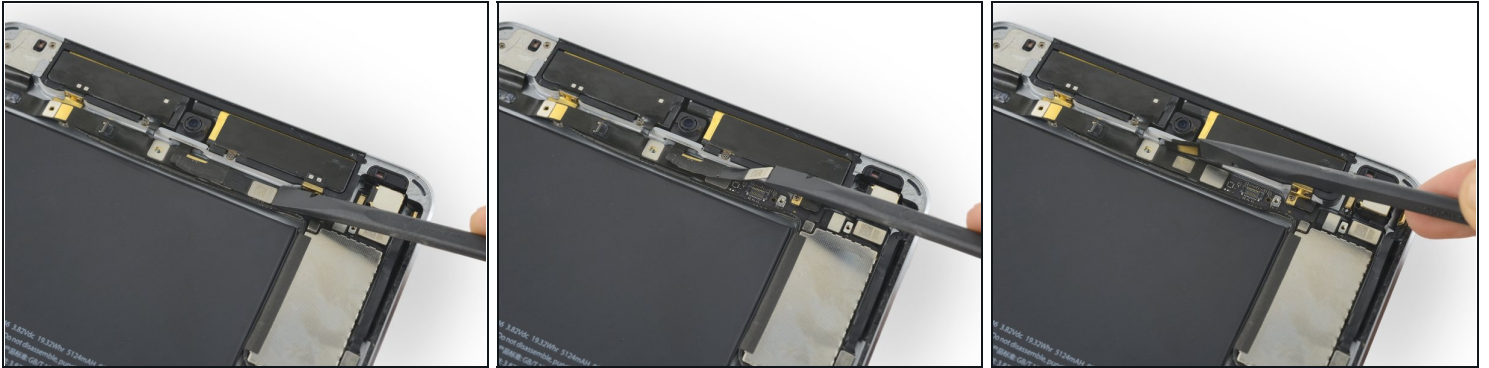
- Use tweezers to pull the antenna ribbon cable from its ZIF socket on the headphone jack ribbon cable.

Step 36



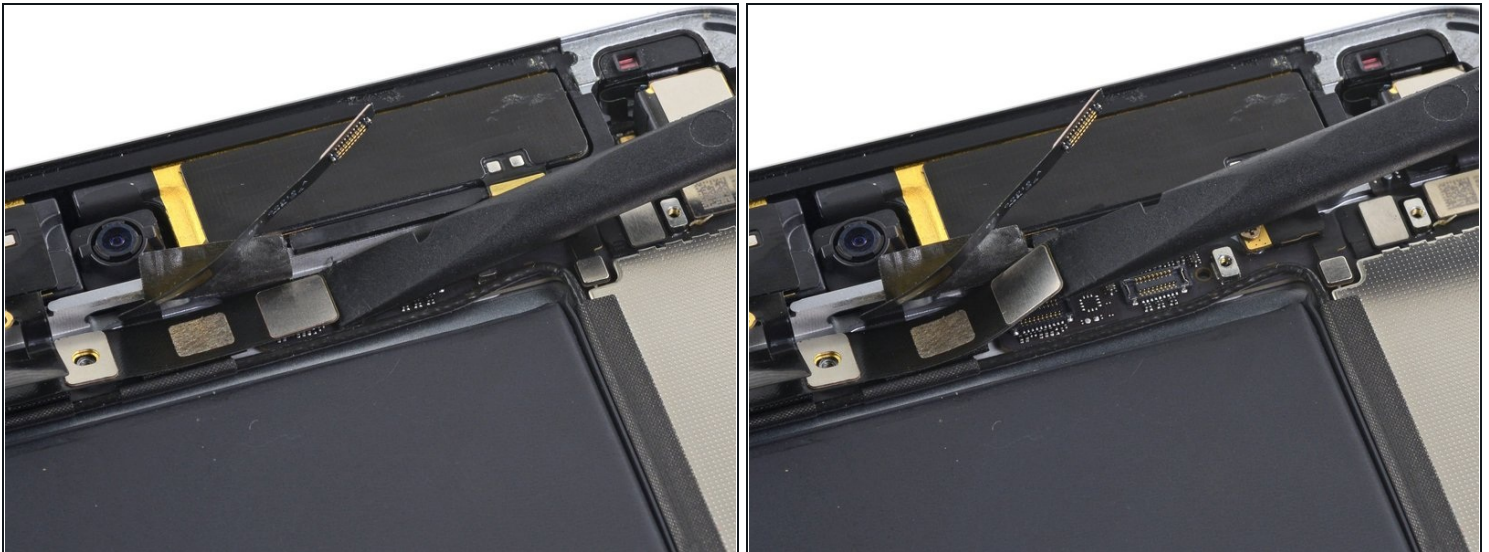
- Peel up the tape over the front camera ribbon cable.

Step 37



- Use the flat end of a spudger to disconnect the front camera press connector from its socket on the logic board.

Step 38



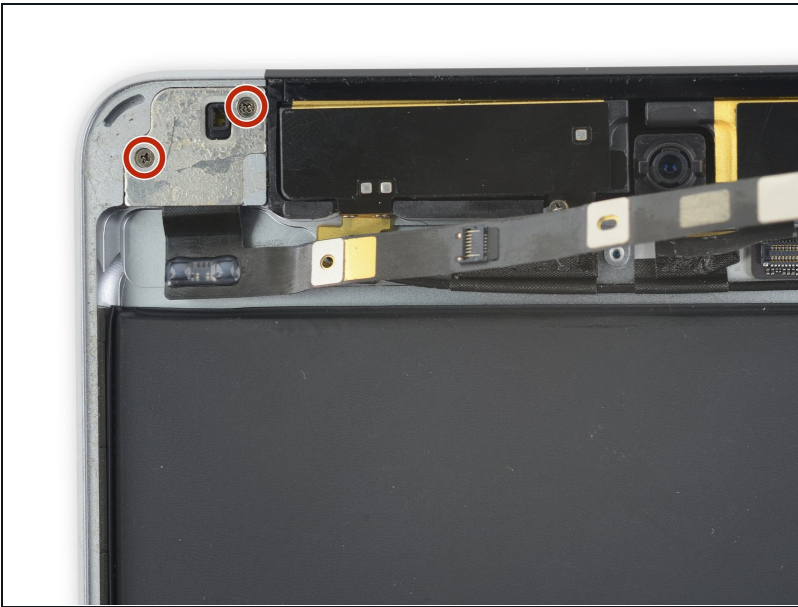
- Use the flat end of a spudger to lift the headphone jack cable connector from its socket on the logic board.

Step 39



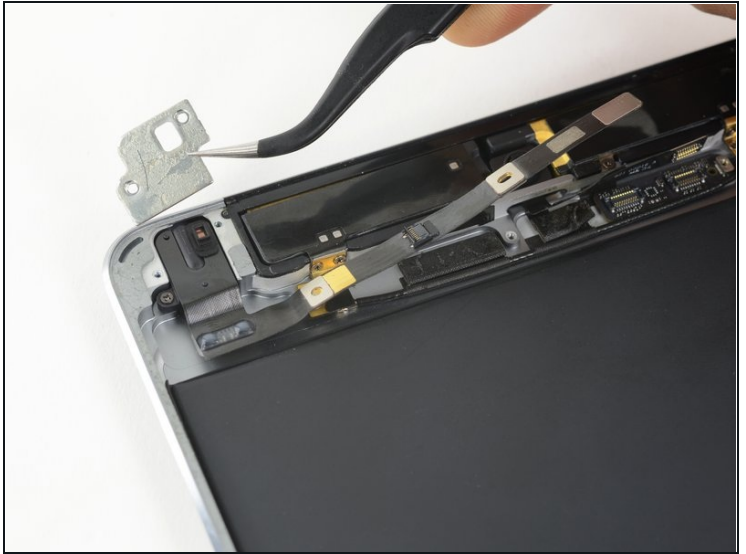
- Slide the flat end of a spudger under the headphone jack ribbon cable to separate it from the adhesive holding it to the rear case.

Step 40



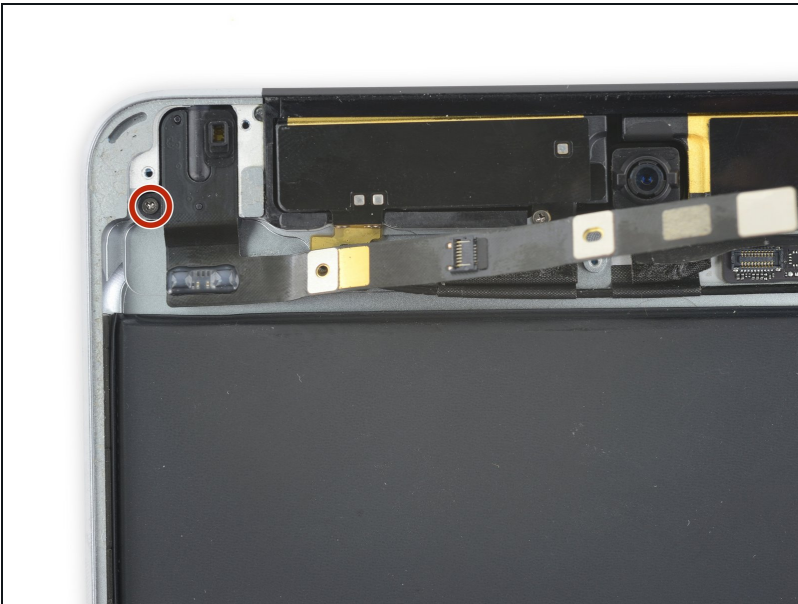
- Remove the two 1.5 mm Phillips screws securing the headphone jack bracket.

Step 41



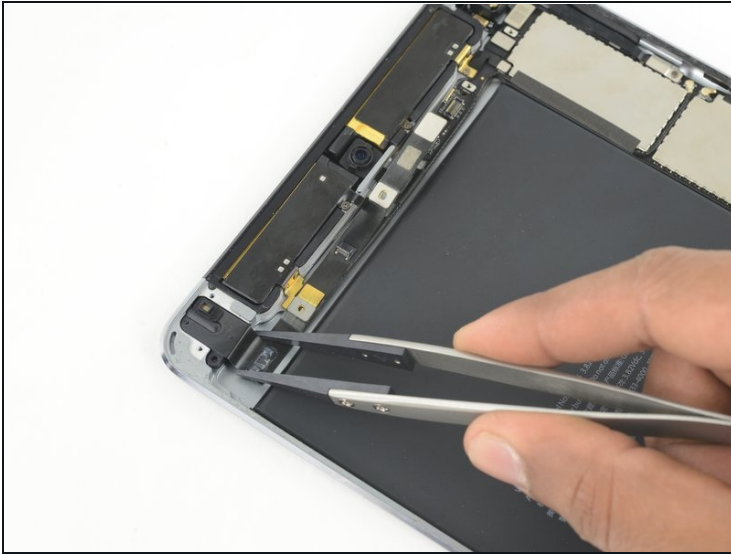
- Remove the headphone jack bracket.

Step 42



- Remove the final 2.6 mm Phillips screw securing the headphone jack to the rear case.

Step 43



- Remove the headphone jack from the iPad.

To reassemble your device, follow these instructions in reverse order.