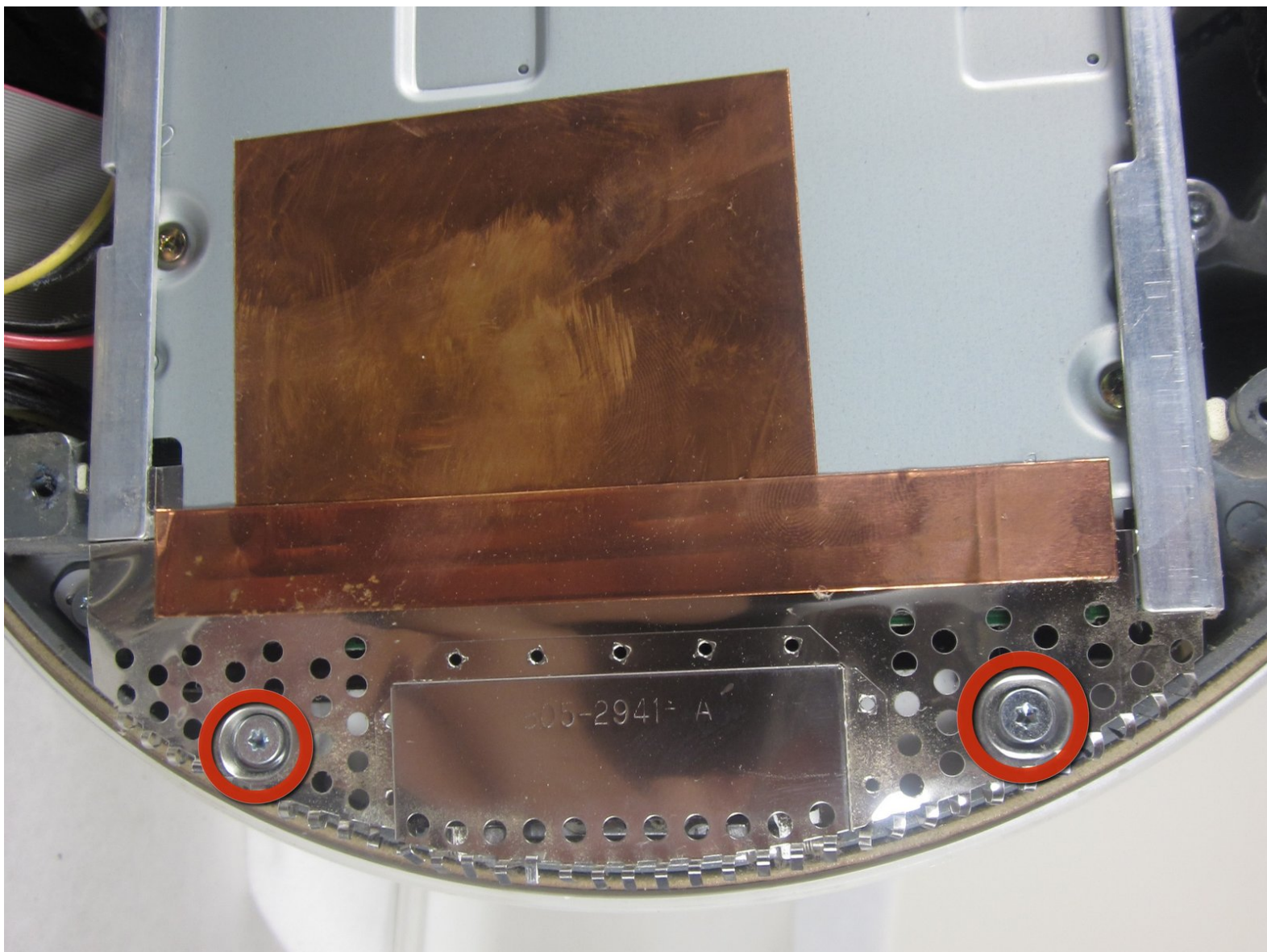




iMac G4 17 800 MHz EMC 1936 Drive Carrier Assembly Replacement

Follow to access hard drive, optical drive, or components behind carrier.

Written By: Courtney

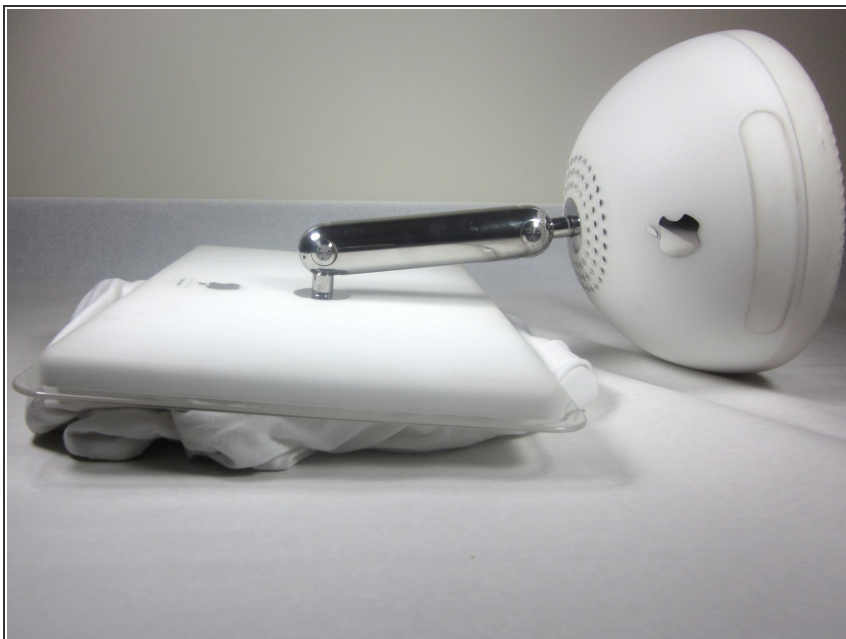




TOOLS:

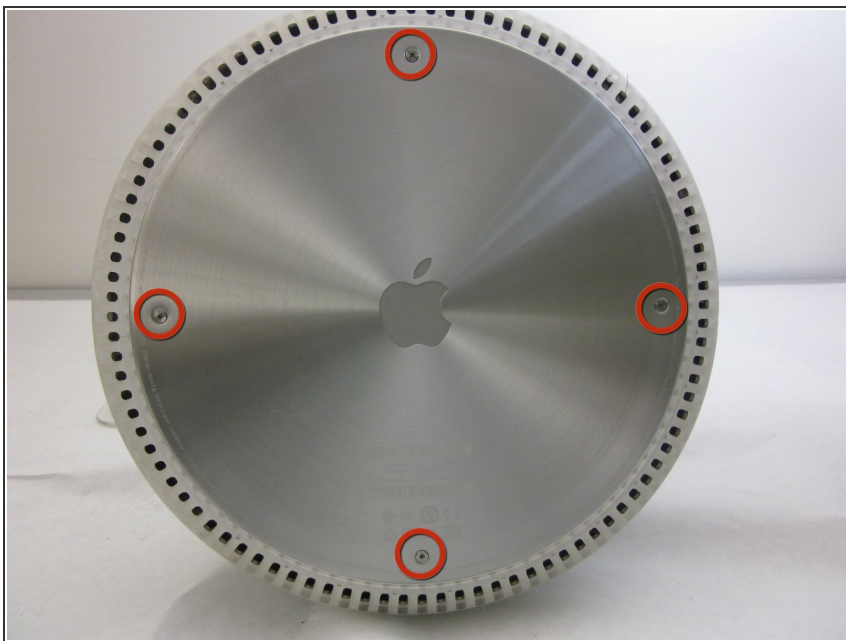
- [TR10 Torx Security Screwdriver](#) (1)
- [Torx-15 screwdriver](#) (1)

Step 1 — Bottom Plate



- Unplug all the cables from the computer, including the power cable. Lay the computer face-down, supporting the neck and base with a soft cloth under the screen.

Step 2



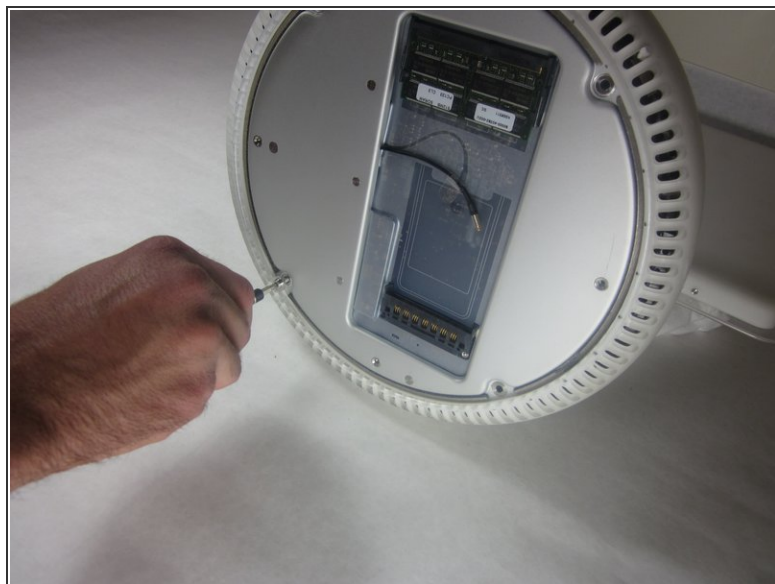
- Loosen the four Phillips #0 screws.

Step 3



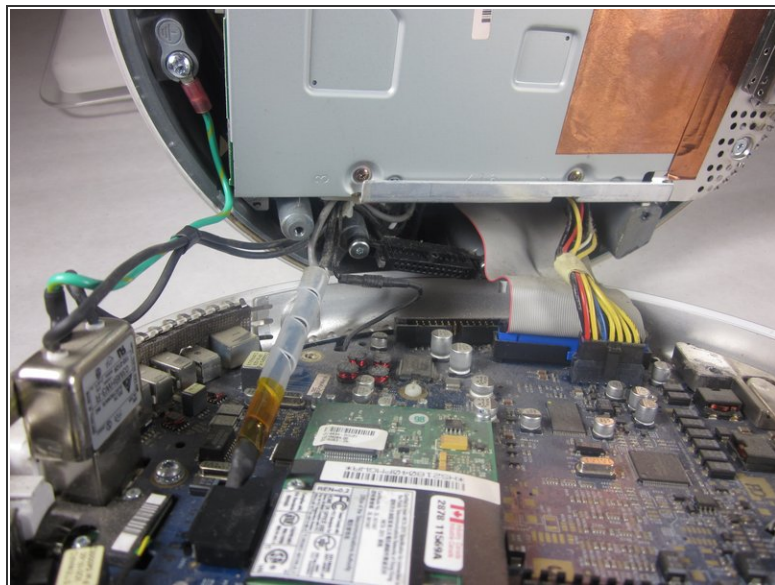
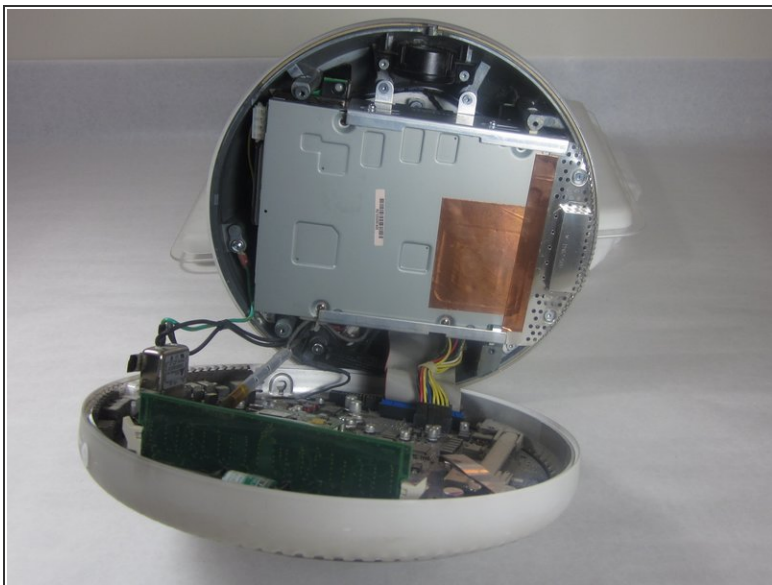
- Carefully remove the base access panel.

Step 4 — Bottom Plate Housing



- Remove the four 25mm T-15 screws.

Step 5

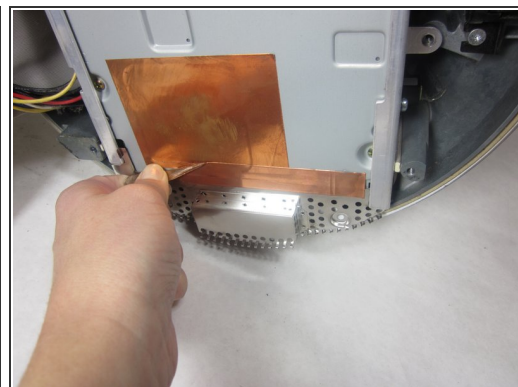
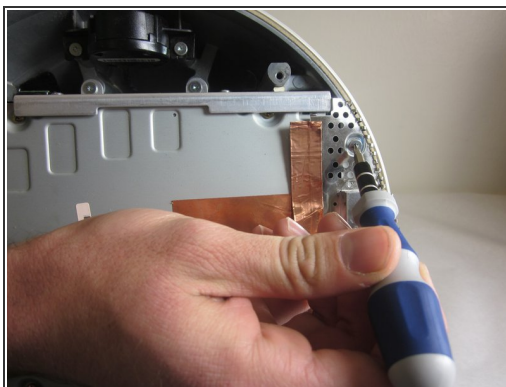
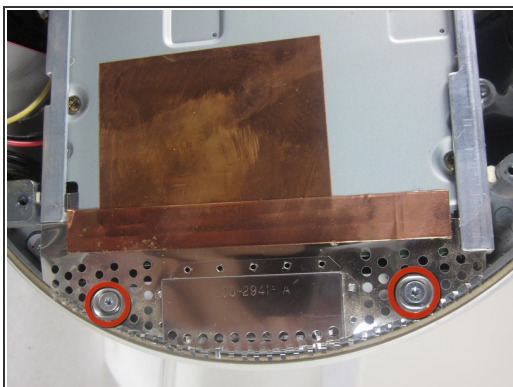


- Open the housing plate.

⚠ Be gentle with the wires still connected to the logic board so as not to ruin the cables.

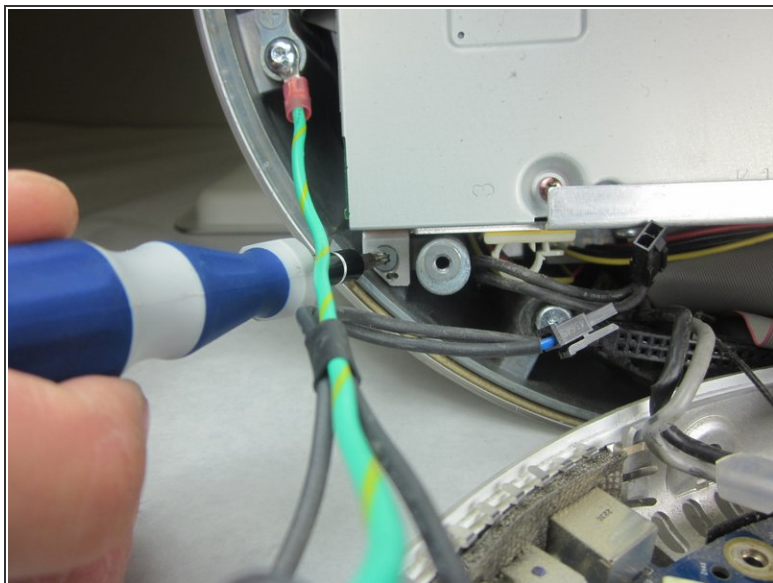
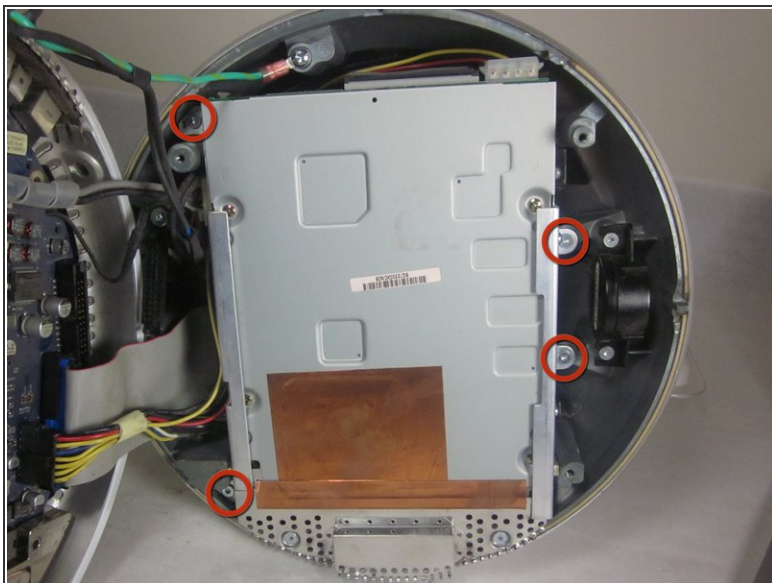
- A fixed plug connector between the logic board and upper unit will cause some resistance. Pull gently but firmly.

Step 6 — Drive Carrier Assembly



- Remove the 2 torx 10mm screws on the EMI shield
- Carefully remove shield and copper tape

Step 7



- Remove the 4 10mm torx screws attached to the drive carrier.

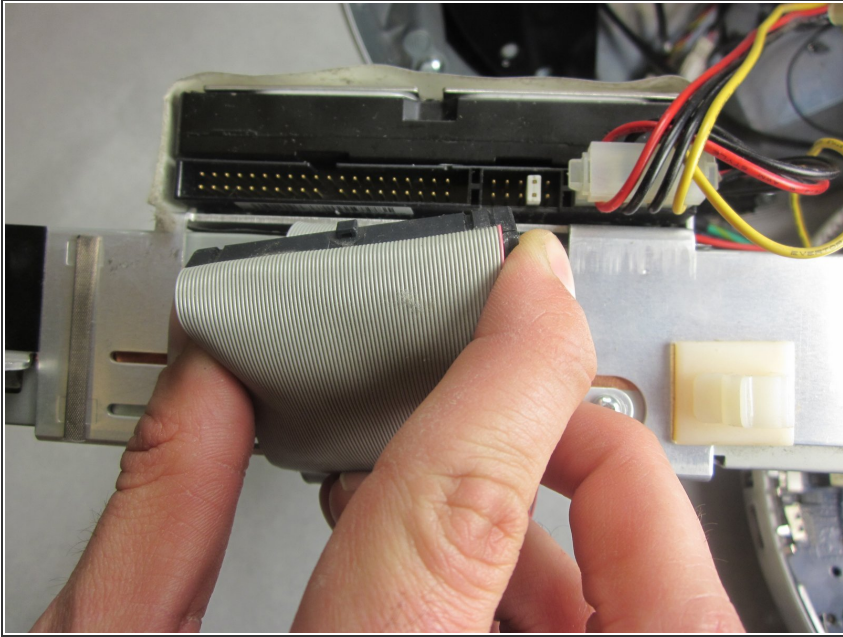
i The drive carrier includes optical drive and hard drive.

Step 8



- Grasp the carrier with both hands on each side.
 - Remove the carrier by lifting up and out.
- i** Pull gently but firmly. The carrier is meant to fit snugly.

Step 9



- Flip the removed carrier to the right and pull out power cables.

To reassemble your device, follow these instructions in reverse order.