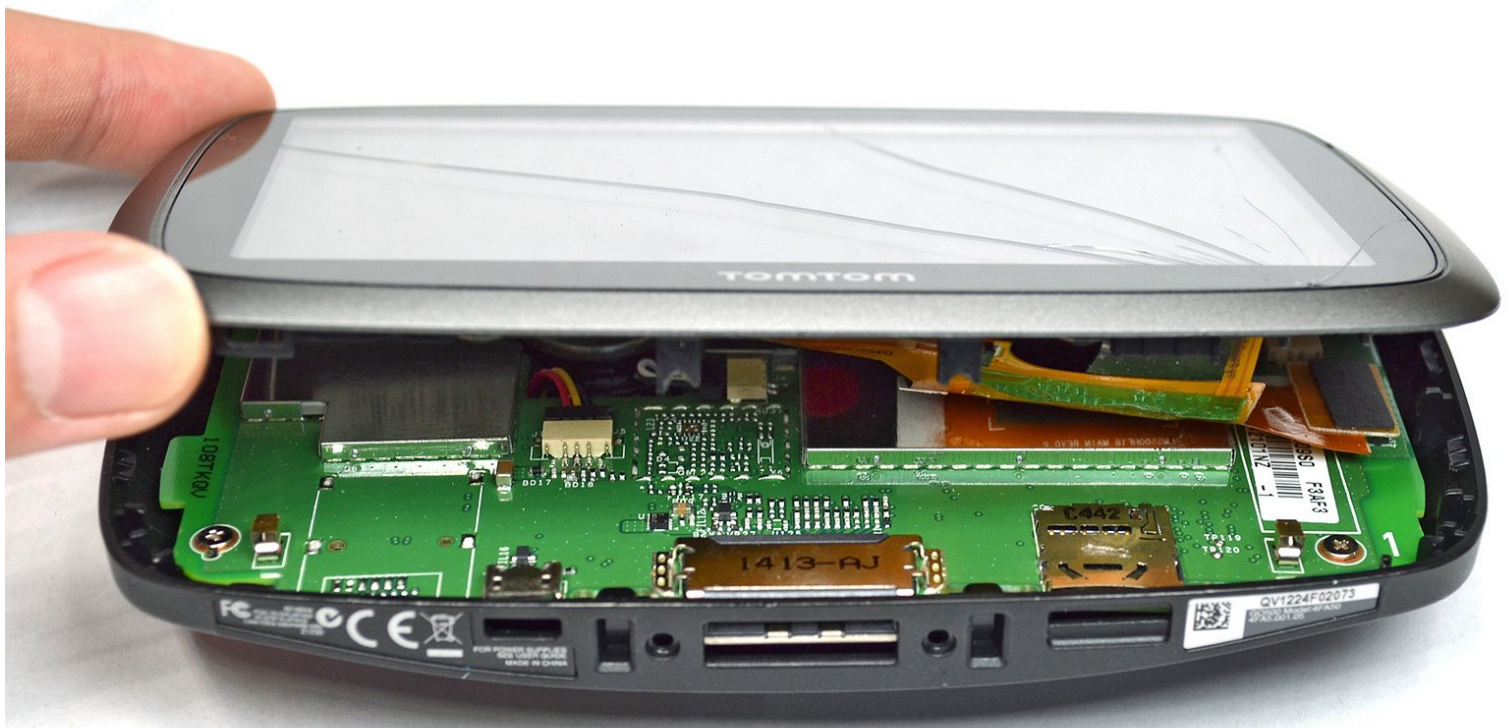




TomTom GO 500 Opening the Device

Opening the device to access the internals.

Written By: jkl





TOOLS:

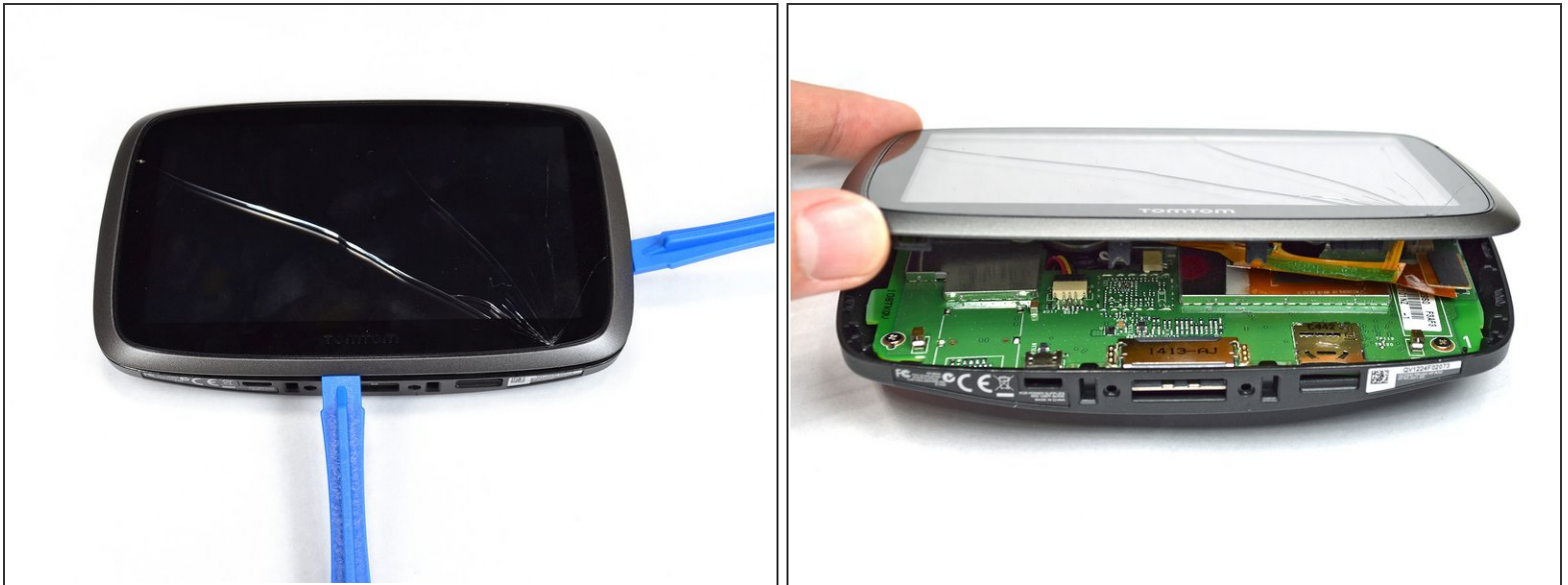
- [iFixit Opening Tools](#) (1)
 - [T5 Torx Screwdriver](#) (1)
-

Step 1 — TomTom GO 500 Opening the Device



- Unscrew the two 3mm screws at the base of the device using the Torx T5 screwdriver.

Step 2



- Using the plastic opening tools, insert one opening tool into the gap between the screen casing and the motherboard casing. Then insert the other tool into one of the adjacent sides and slide it around the top.
- ⓘ There are 14 latches that need to be undone.
- ⚠ The latches break easily during the opening process so we recommend purchasing a new screen casing if they break.

Step 3



- With the screen casing unlatched, locate the right side where the two connectors are.

Step 4



- Unlatch the connectors using the plastic opening tool.
- ⓘ The orange rectangular connector may have come off in the process of removing the screen casing.

Step 5



- Separate the screen casing from the motherboard casing.

To reassemble your device, follow these instructions in reverse order.