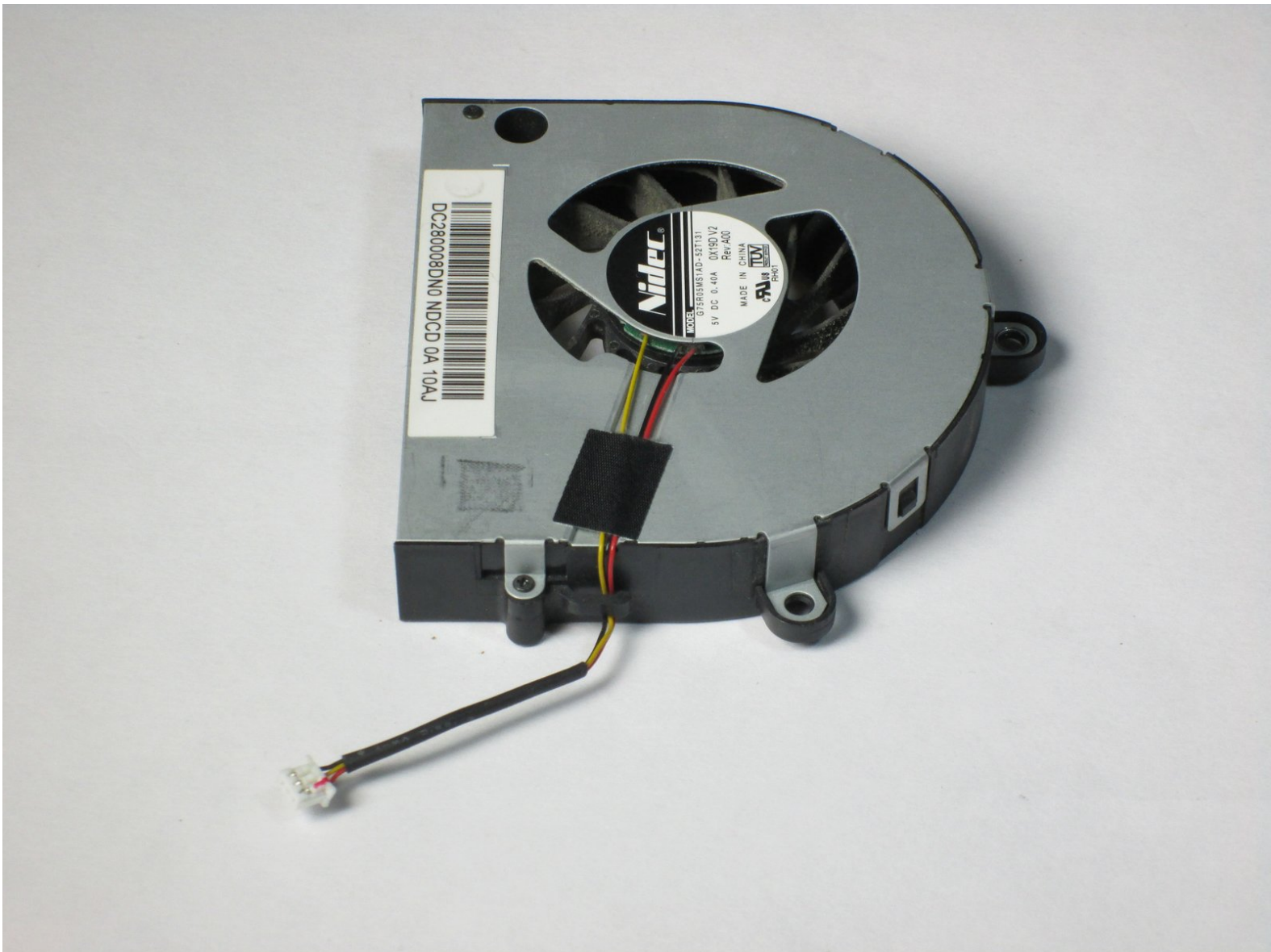




Toshiba Satellite L675D-S7016 Fan Replacement

This guide will walk you through the replacement of the computer's fan. Make sure to follow the referenced guides in order to reach the fan.

Written By: Austin Bons



INTRODUCTION

If your computer seems consistently hot, please check the troubleshooting guide to determine if you might have a faulty fan. If find that your fan is clogged, or broken, and not working, this guide will show you how to dismantle the back panel and the other parts of the laptop in order to reach the fan. Keep in mind, this removal process is rather difficult, and should not be attempted alone if you are not comfortable with removing components from your laptop.



TOOLS:

- [Phillips #1 Screwdriver](#) (1)
 - [Heavy-Duty Spudger](#) (1)
 - [Metal Spudger](#) (1)
 - [iFixit Opening Tools](#) (1)
-

Step 1 — Battery



- Power down the computer and unplug the power adapter.

Step 2




- Flip the laptop upside down. Locate the two latches on both sides of the battery.

Step 3



- Slide the latch on the right outwards, releasing the lock. The latch stays unlocked once moved.
- Simultaneously slide the latch on the left outwards while pulling the battery towards you.

 Do not touch the metal connectors on the laptop and the battery.

Step 4 — Back Panel Removal



- Remove the single captive screw on the back panel with your Phillips #1 screwdriver.

Step 5



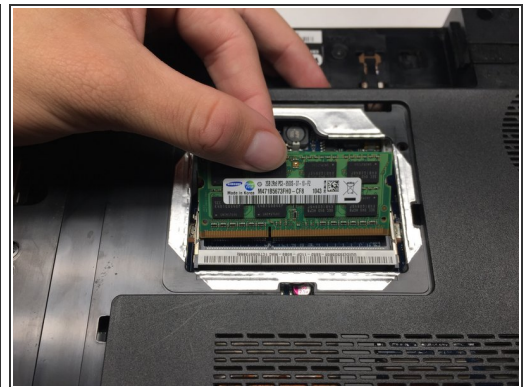
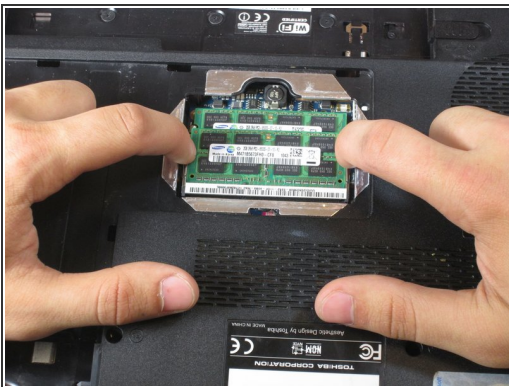
- Pry the removal tab up. You will feel and hear the first clip release, popping up slightly.
- Work your way around the border of the panel, releasing the rest of the clips.
- Once all clips are released, lift the cover up and pull towards you.

Step 6 — Hard Drive



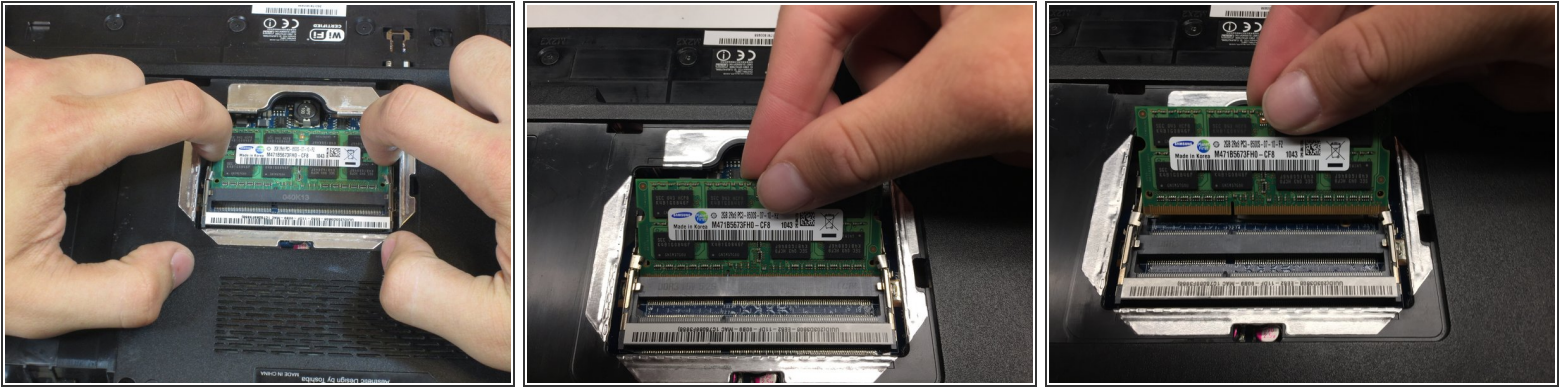
- Slide the hard drive to the left, using the silver tab.
 - Pull up the silver tab, removing the hard drive from the slot.
- ⚠ Do not touch the metal data pins on the hard drive or computer.

Step 7 — RAM



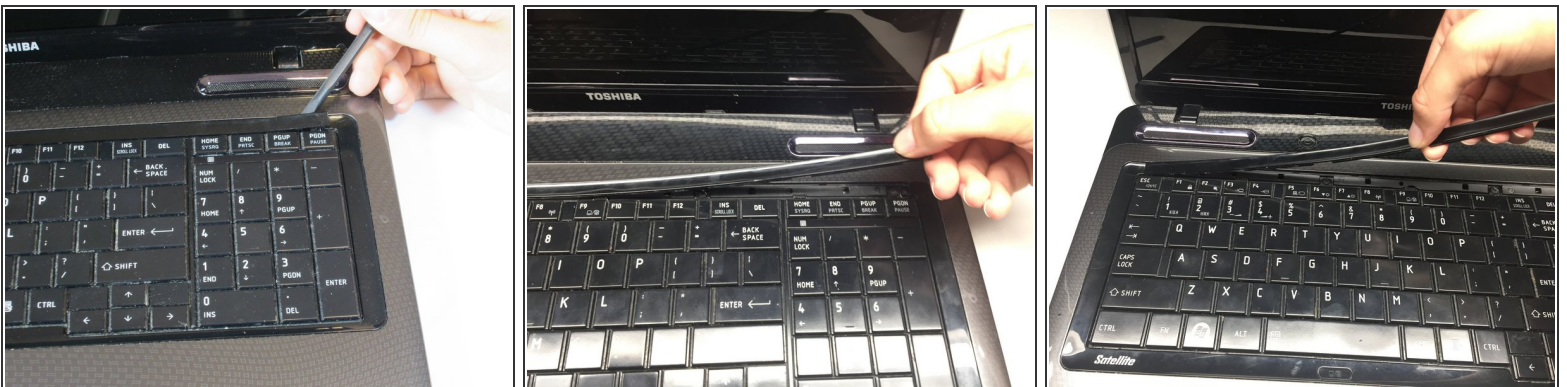
- Using your fingers, spread the spring tabs holding the top stick of RAM in place.
- Once the tabs are spread apart, the stick of RAM will pop up.
- Remove the first stick of RAM by pulling out along the same angle the RAM stick springs up.

Step 8



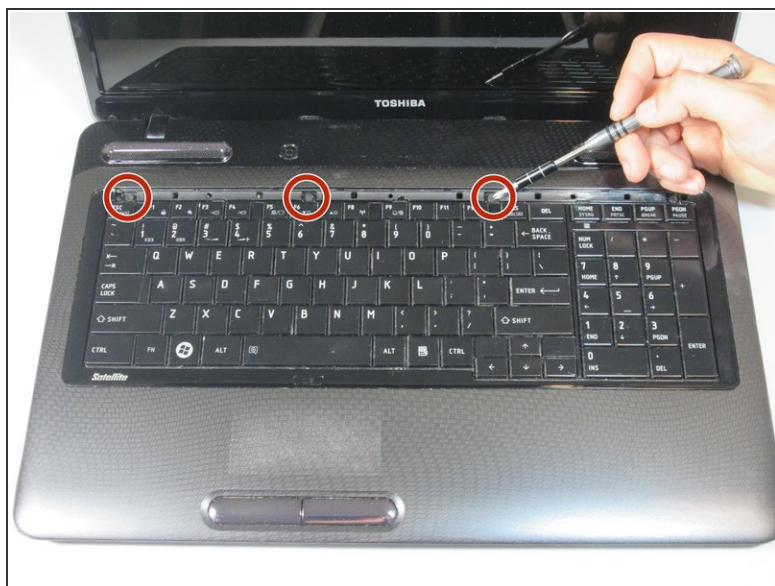
- Repeat the same procedure to remove the second stick of RAM.

Step 9 — Keyboard



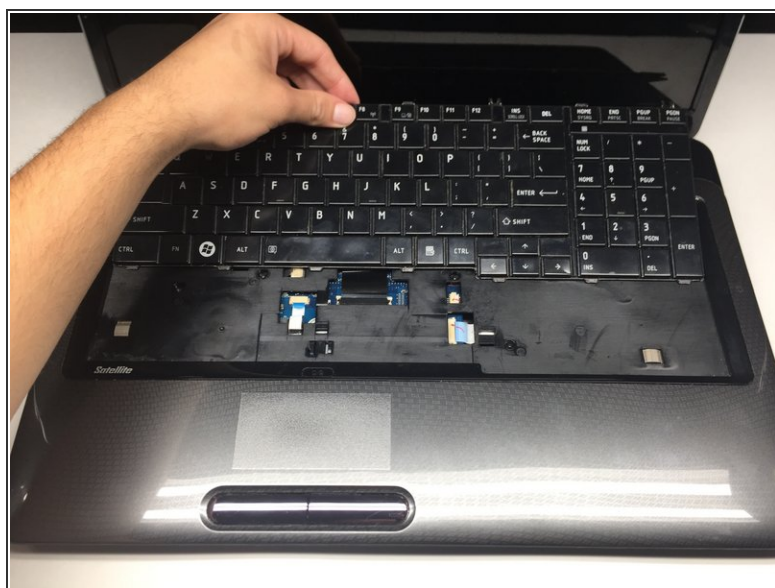
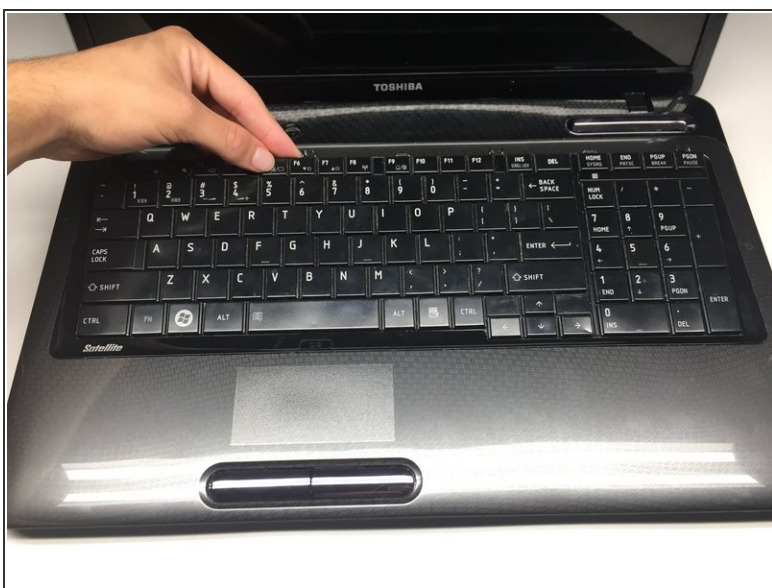
- Pry under the plastic strip, starting on the top right side of the key board with a Heavy Duty Spudger.
- Once the first corner is raised, use your hand pulling upwards and release the rest of the strip.

Step 10



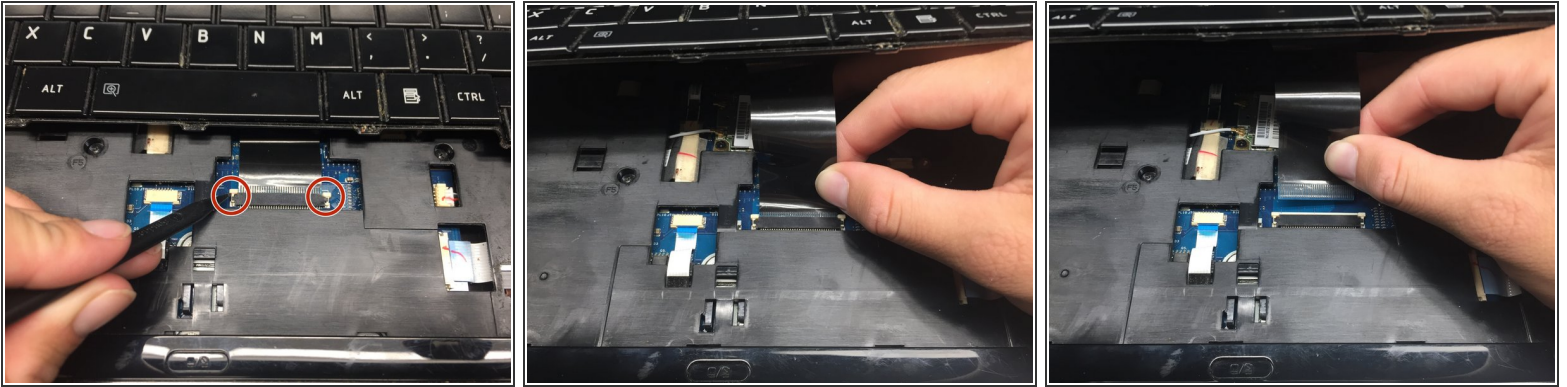
- Remove the first 3mm screw with the Phillips #1 screwdriver.
- Remove the next three 3mm screws.

Step 11



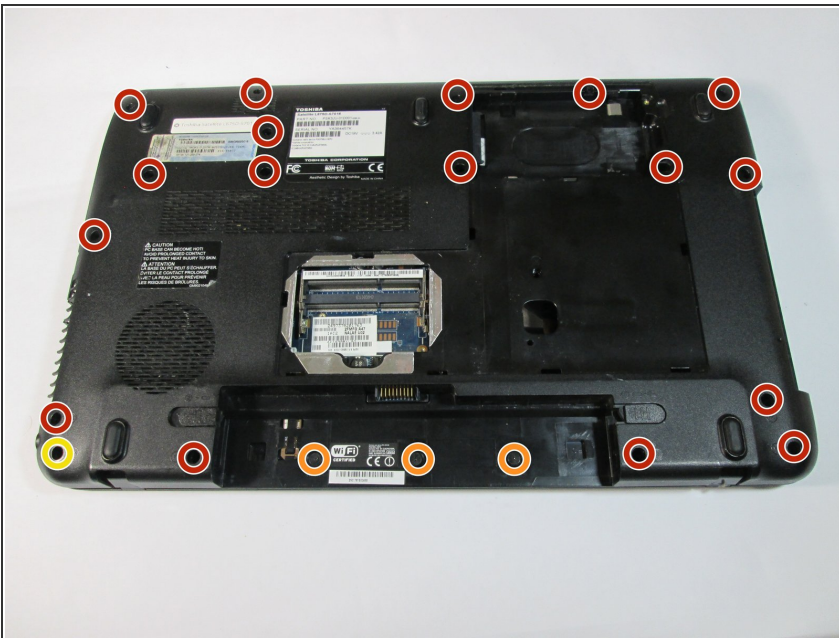
⚠ Lift the keyboard gently . Slide it forward towards the screen and speakers. This reveals the connection needed for the next step.

Step 12



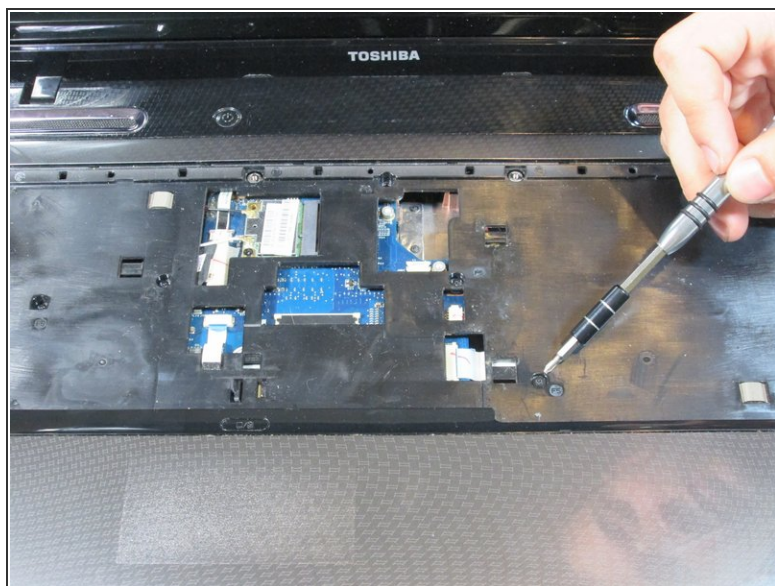
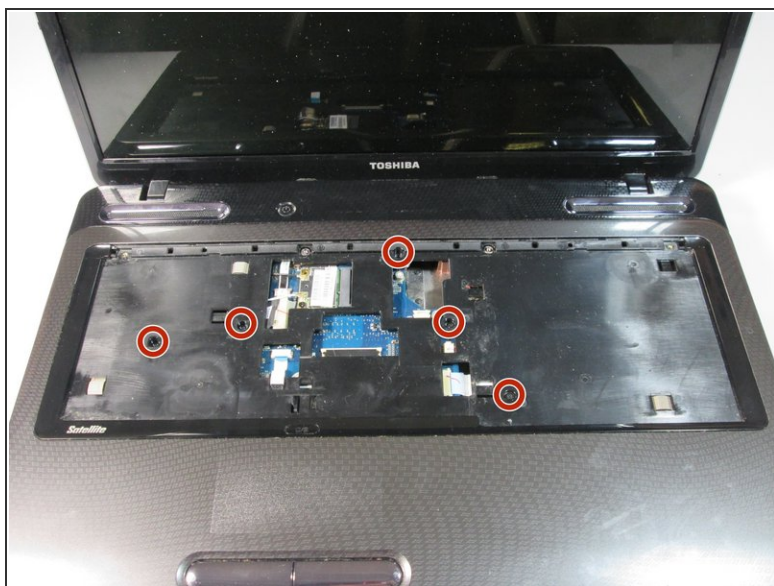
- Use the pointed end of the Heavy-Duty Spudger and push the pins toward the screen, leaving them in this position.
- Carefully slide the connector out of the port.

Step 13 — Top Case Housing



- Remove the following screws with a Phillips #1 screwdriver.
 - Seventeen 5mm screws (recessed)
 - Three 2mm screws in the battery bay (flush-mounted)
 - Single 5mm screw does not need removal unless working on the screen

Step 14



- Remove five 5mm screws with the screwdriver.

Step 15



- Locate the trackpad connector.
- Pull the ribbon from the connector.

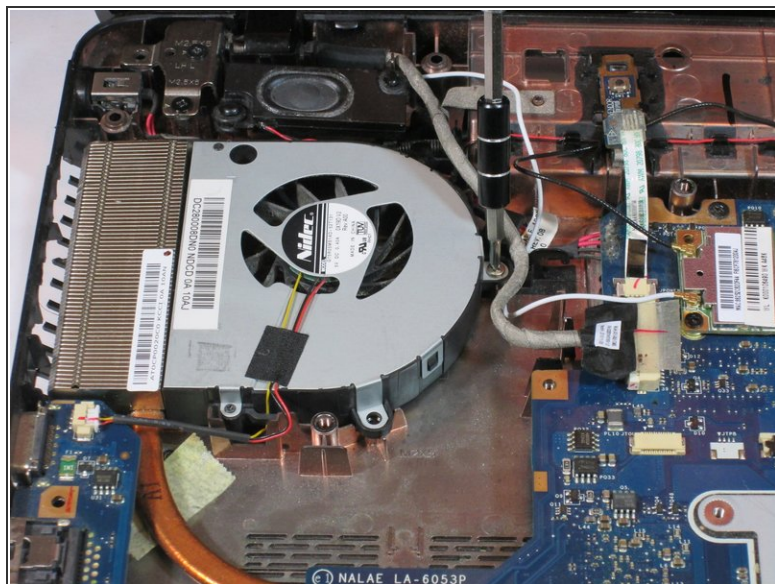
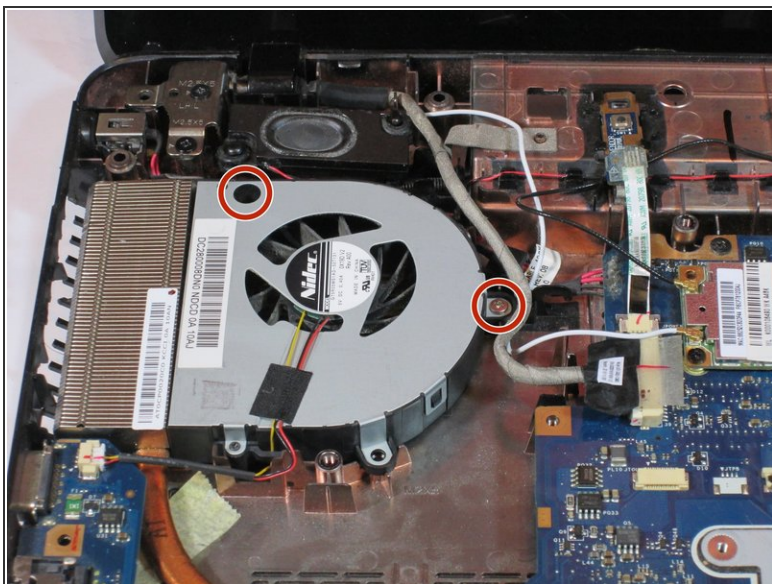
Step 16



- Pry under the top case housing along the perimeter with a plastic opening tool.

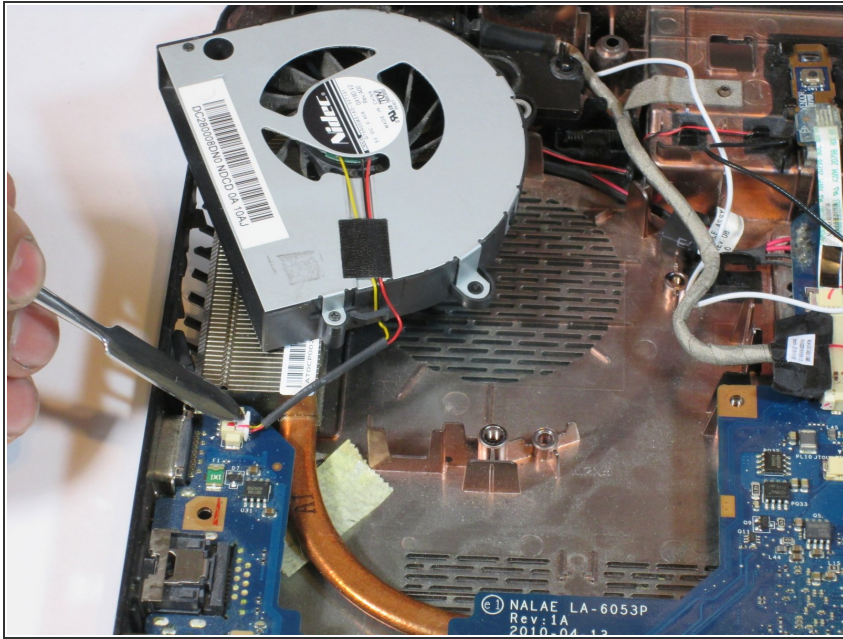
⚠ Be careful and gentle with this step, the clips you are releasing here are plastic and can be broken by violent prying.

Step 17 — Fan



- Remove the two 5mm screws using screwdriver.

Step 18



- Disconnect fan wire from connector with metal Spudger -- the fan can now be removed completely.
- ⚠ Be careful when removing this connector! It is very delicate. If you break this connector the whole fan needs replacement. If you break the connector on the motherboard side, you may need a whole new motherboard.

To reassemble your device, follow these instructions in reverse order.