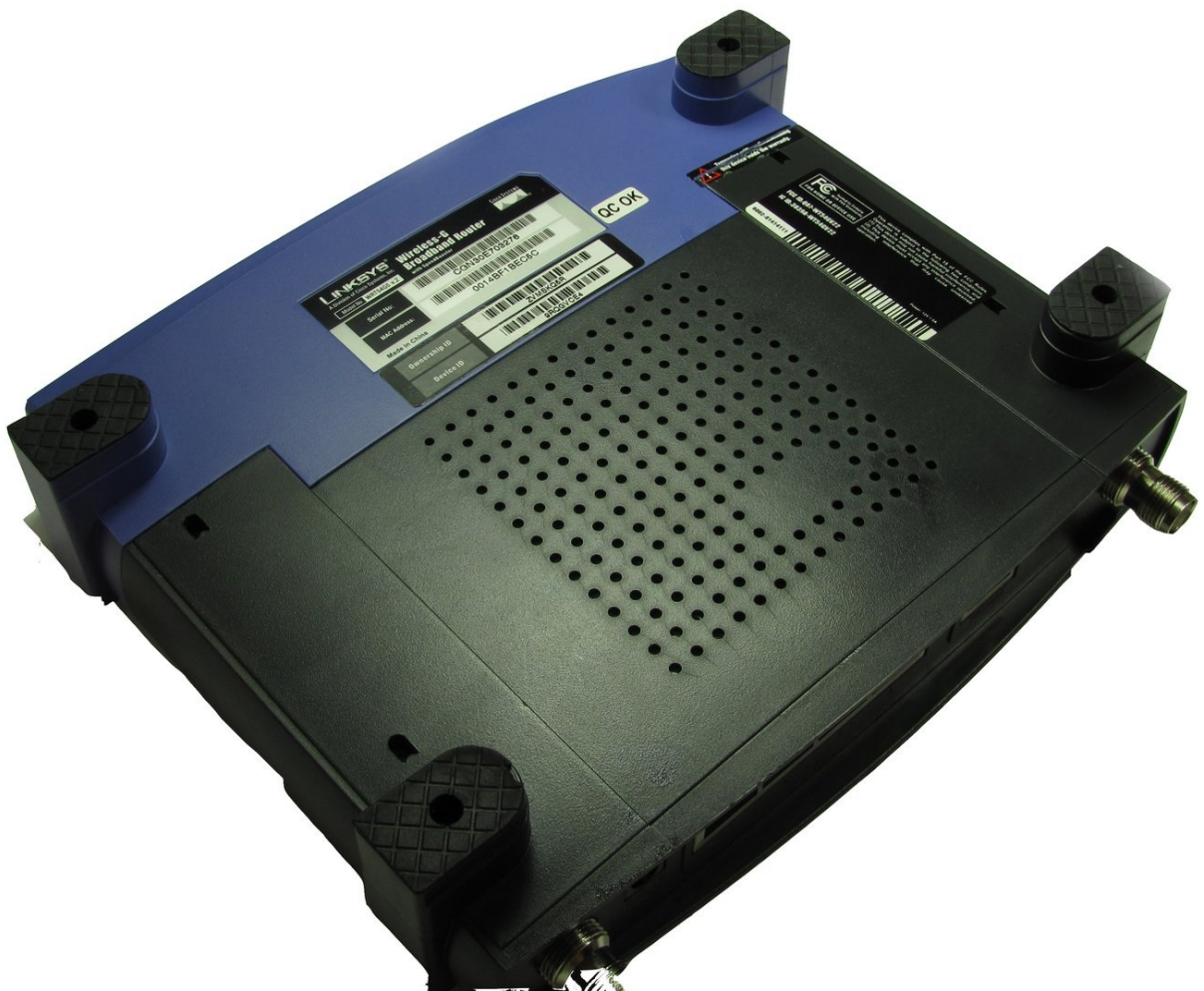




Linksys WRT54GS v2 Front Case Replacement

In this guide you will remove the router's...

Written By: Allian Roman



INTRODUCTION

In this guide you will remove the router's front case and begin to have access to the router's internal components.

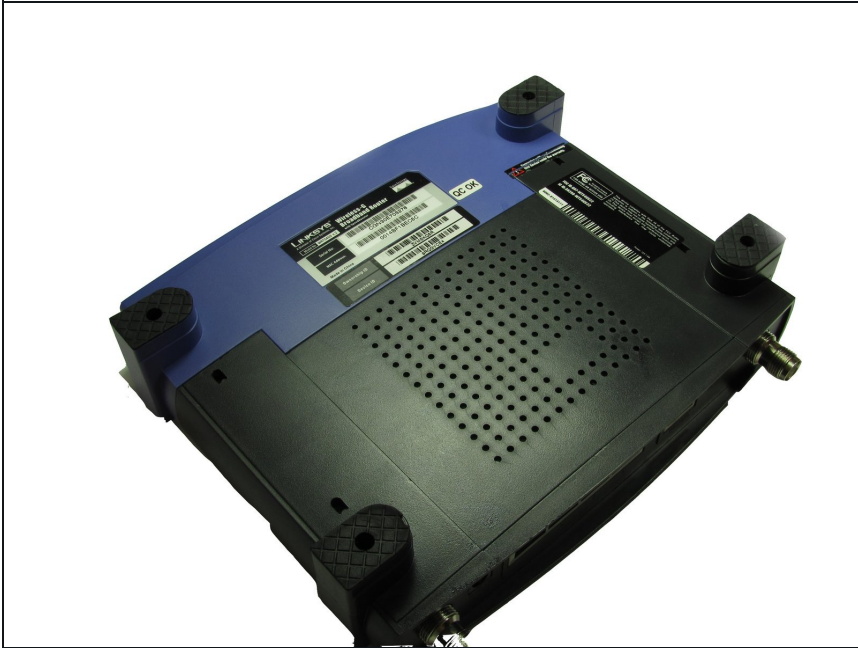
TOOLS:

[Metal Spudger](#) (1)

[Phillips #2 Screwdriver](#) (1)

[iFixit Opening Tool](#) (1)

Step 1 — Front Case



- Turn the router over so that all four of its feet are facing upwards.

Step 2



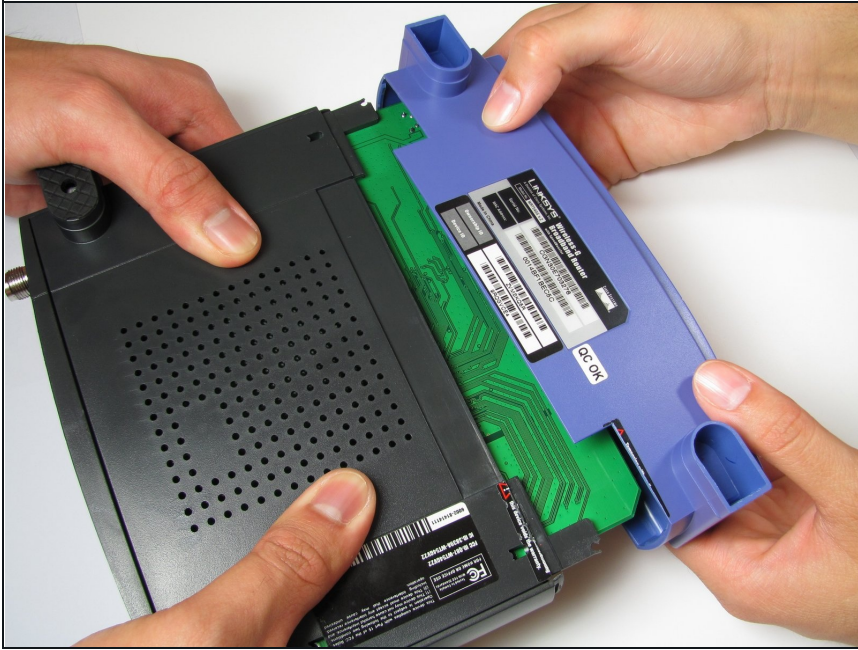
- Remove the rubber inserts inside the the two purple feet located on the router's front case.
- This may be a challenge, so try the following two methods:
 - Use a plastic opening tool. Insert the flat end of the tool into the seam and slowly pry the rubber feet out.
 - Use a metal spudger. Insert the point of the metal spudger directly into the hole of the rubber feet and pry the insert out.

Step 3



- Use a Phillips #2 Screwdriver to remove the two 5.8 mm screws holding the front case to the motherboard.

Step 4



- Squeeze the sides of the router's backcase inward and pull off the purple front case. It is helpful to have a second person assist you for this step.

To reassemble your device, follow these instructions in reverse order.