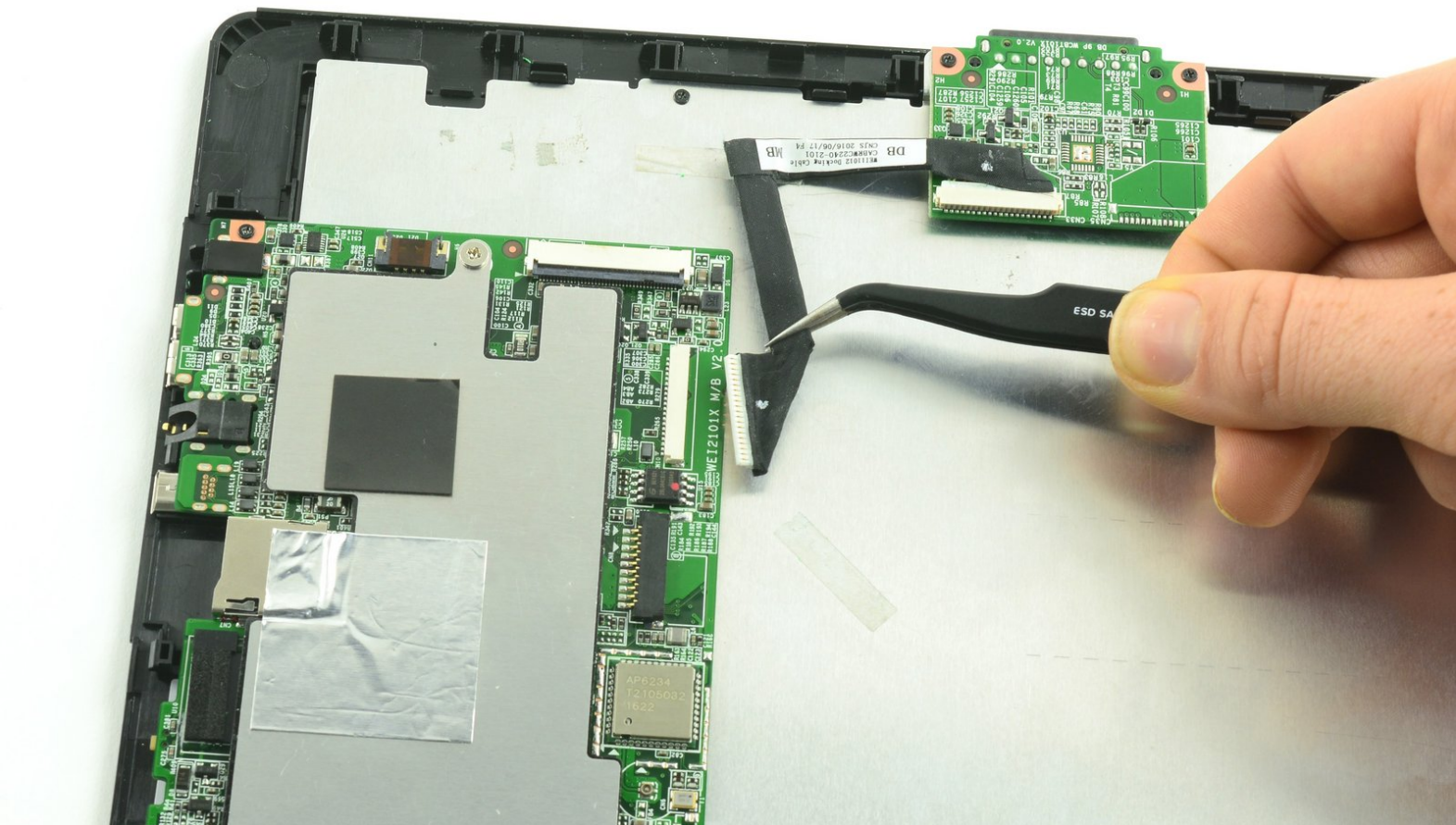




# One Education Infinity:One Dock Contact Assembly Replacement

This guide will demonstrate how to remove the dock connector in your One Education Infinity:One laptop.

Written By: Taylor Bratsch



---

## INTRODUCTION

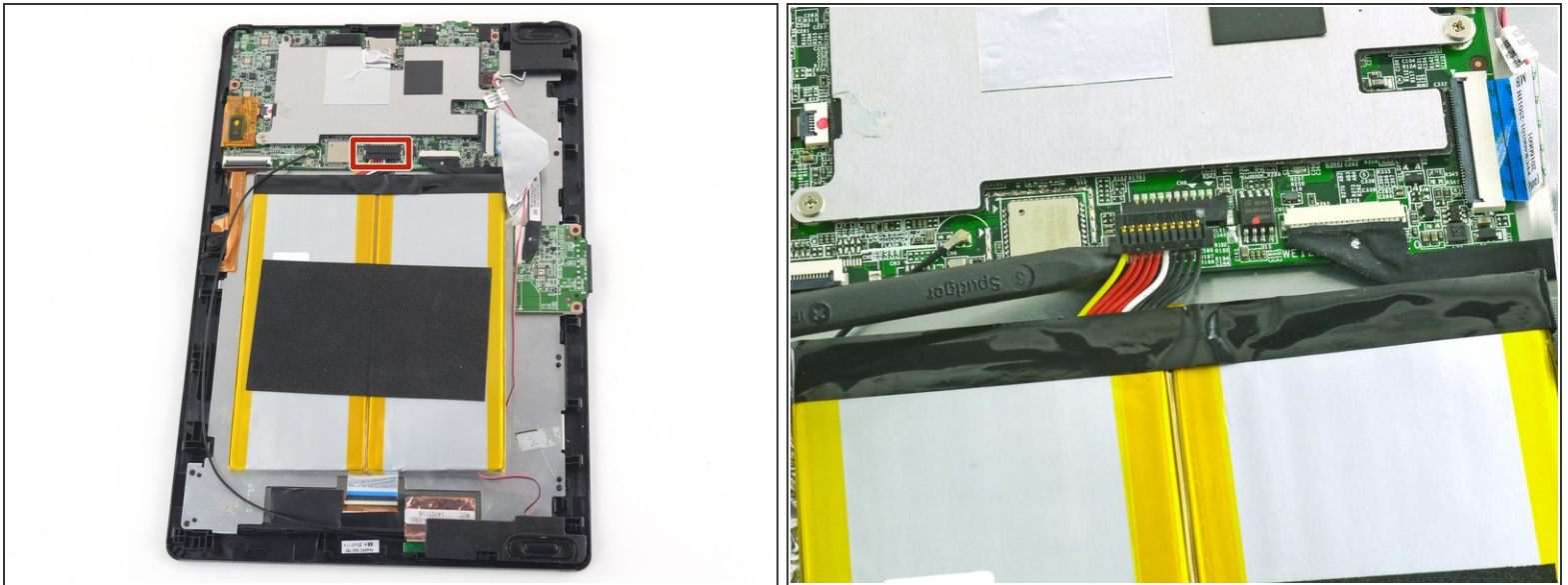
This guide will detail how to replace the circuit board that connects the tablet top with the keyboard base. If the base fails to connect to the tablet replacing this circuit board might solve the problem.

---

### TOOLS:

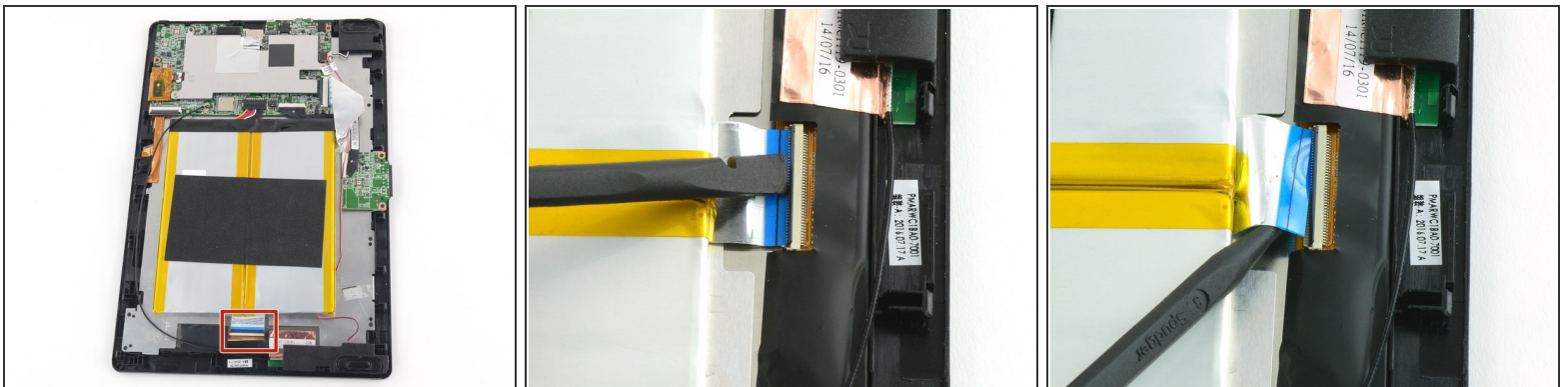
- [Jimmy](#) (1)
  - [Heavy-Duty Spudger](#) (1)
  - [Phillips #000 Screwdriver](#) (1)
-

## Step 1 — Battery



- Use a spudger to disconnect the black bundled cable connector from the motherboard.

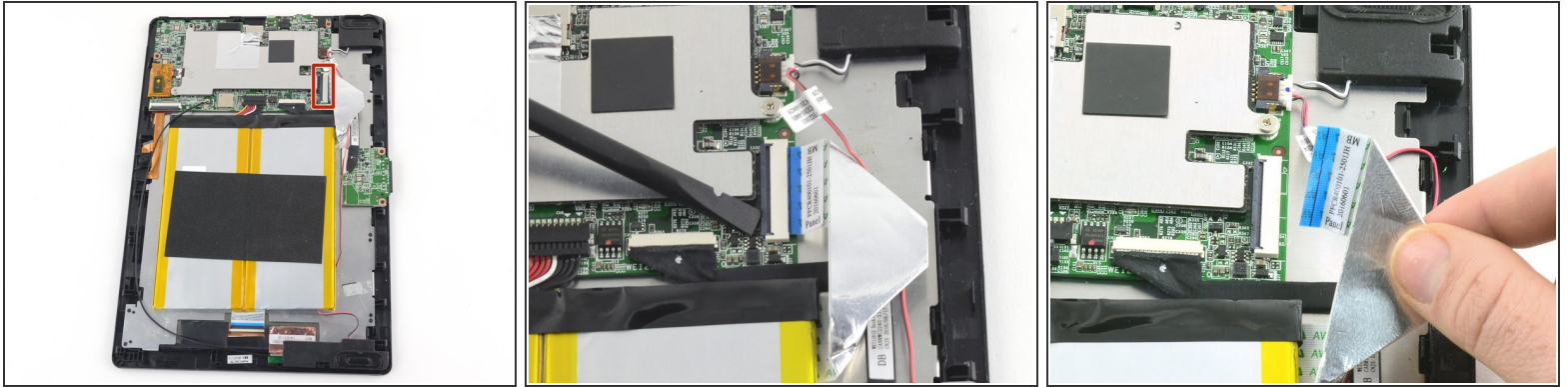
## Step 2



- Use a spudger to lift the black tab on top of the ZIF connector.
- Slide the ribbon cable out of the connector.

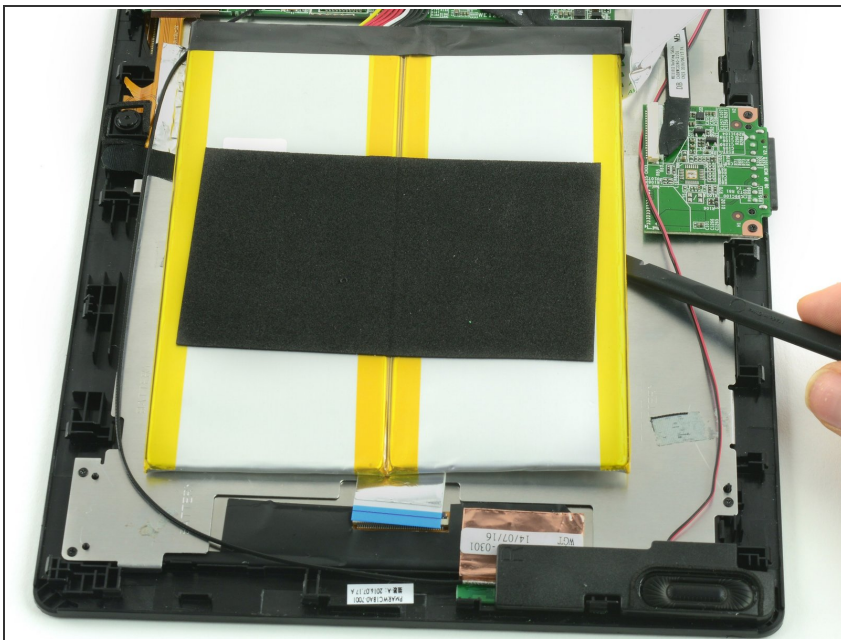


## Step 3



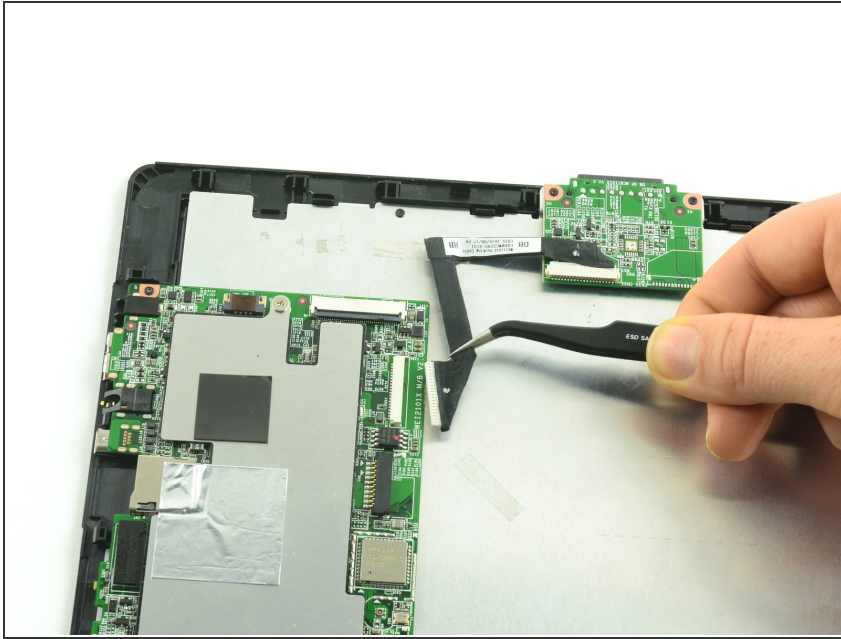
- Use a spudger to flip up the black retaining flap on the ZIF connector.
- Pull the folded ribbon cable straight out of the connector.
- ⓘ This ribbon cable must be disconnected before removing the battery because it is attached to the battery with adhesive.

## Step 4



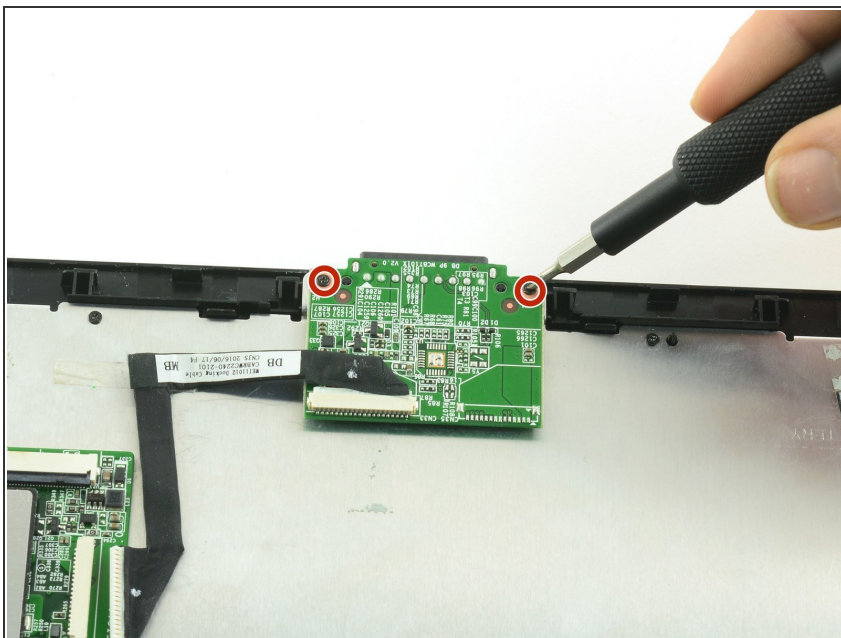
- Use a spudger to pry the battery away from the device.
- ⚠ Always use ESD safe tools when working with delicate electrical components.

## Step 5 — Dock Contact Assembly



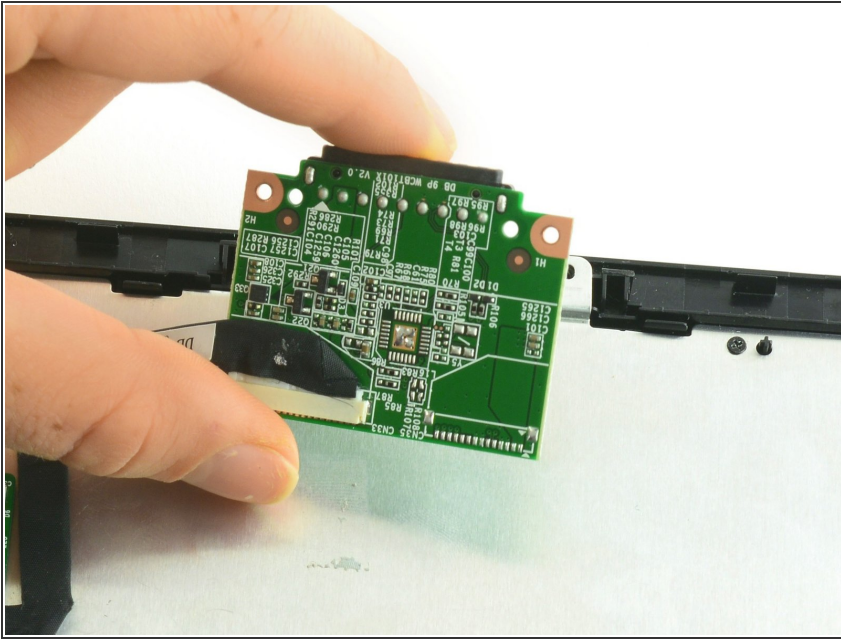
- Use tweezers to pull the dock contact display cable away from the connector on the motherboard.

## Step 6



- Use a Phillips #000 screwdriver to unscrew the two 4.2mm screws from the circuit board containing the dock contact.

## Step 7



- Lift the dock contact assembly away from the device.

To reassemble your device, follow these instructions in reverse order.