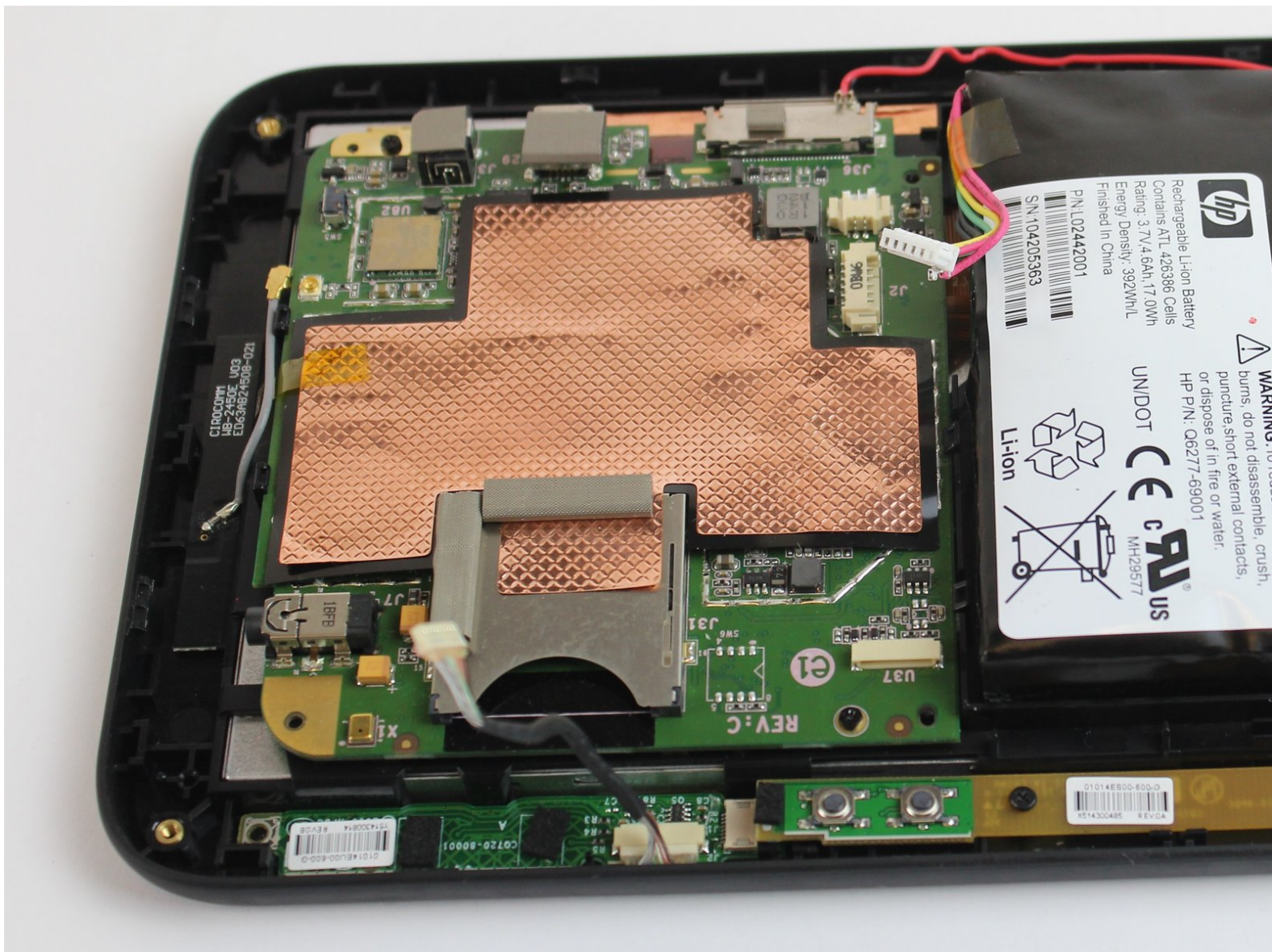




# HP eStation Zeen Motherboard Replacement

This guide is used to replace the Motherboard of the HP eStation Zeen

Written By: dalton hale



## INTRODUCTION

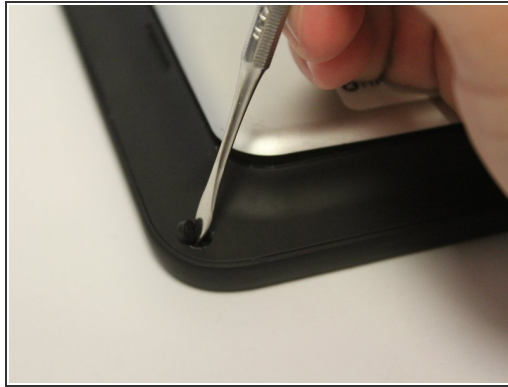
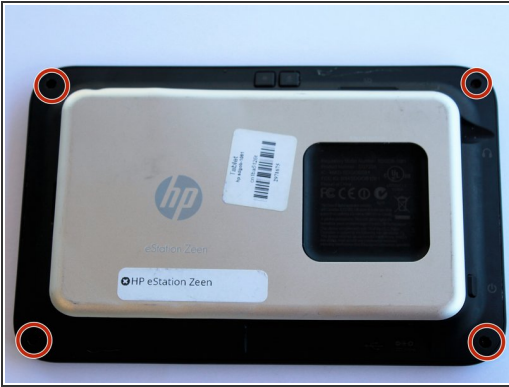
Replacing the motherboard of the HP eStation Zeen is rated a difficult repair, however anyone with patients can do it. The largest challenges for making this repair is paying attention to details and using a light touch. There are screws to keep track of and multiple connections to unfasten and reconnect, but when taking the time to follow steps closely it is no more complex than replacing the 9 volt battery in most smoke detectors.



### TOOLS:

- [Metal Spudger Set](#) (1)
  - [iFixit Opening Tools](#) (1)
  - [Tweezers](#) (1)
  - [Heavy-Duty Spudger](#) (1)
  - [Phillips #0 Screwdriver](#) (1)
-

## Step 1 — Motherboard



- Remove the screw caps using the metal spudger.
- Remove the four 6mm Phillips screws using the Phillips #0 screwdriver.

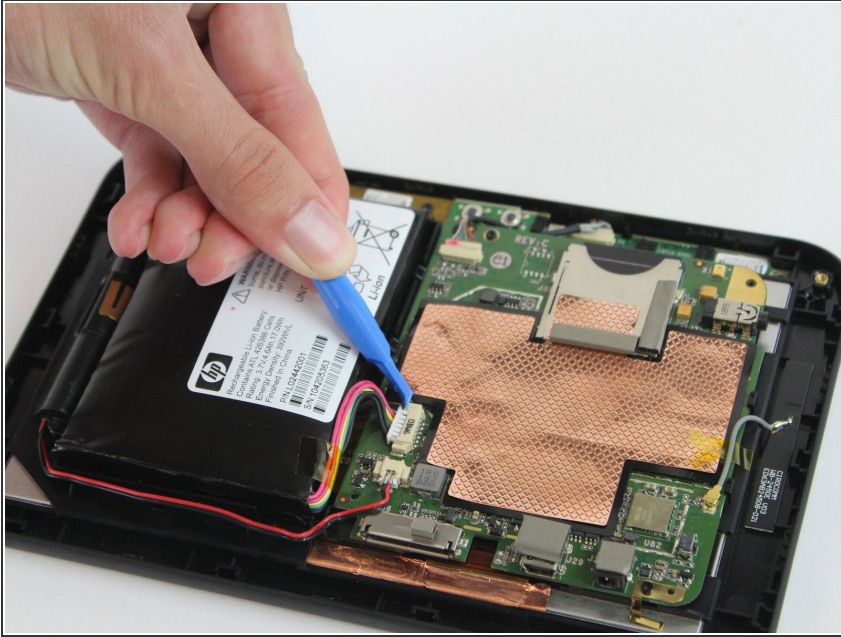
## Step 2



- Unclip each side of the back cover by inserting the plastic opening tool and sliding it along the edge.
- Remove the back panel by lifting the panel away from the device.



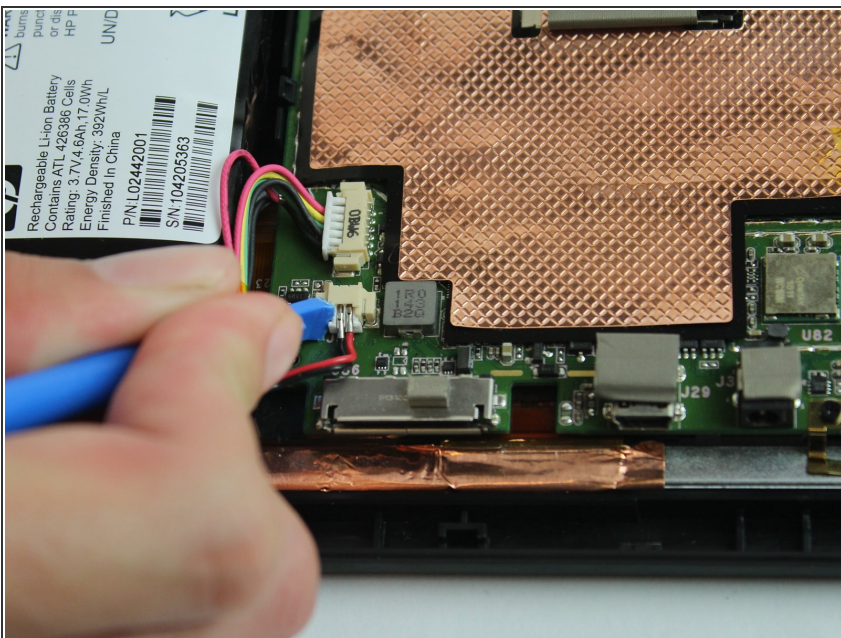
## Step 3



- Disconnect battery clip with plastic opening tool.

⚠ The clip is very fragile.

## Step 4



- Disconnect the speaker terminal with the plastic opening tool.

⚠ The clip is very fragile.

## Step 5



- Disconnect the the volume button clip with metal spudger tool.

⚠ The clip is fragile.

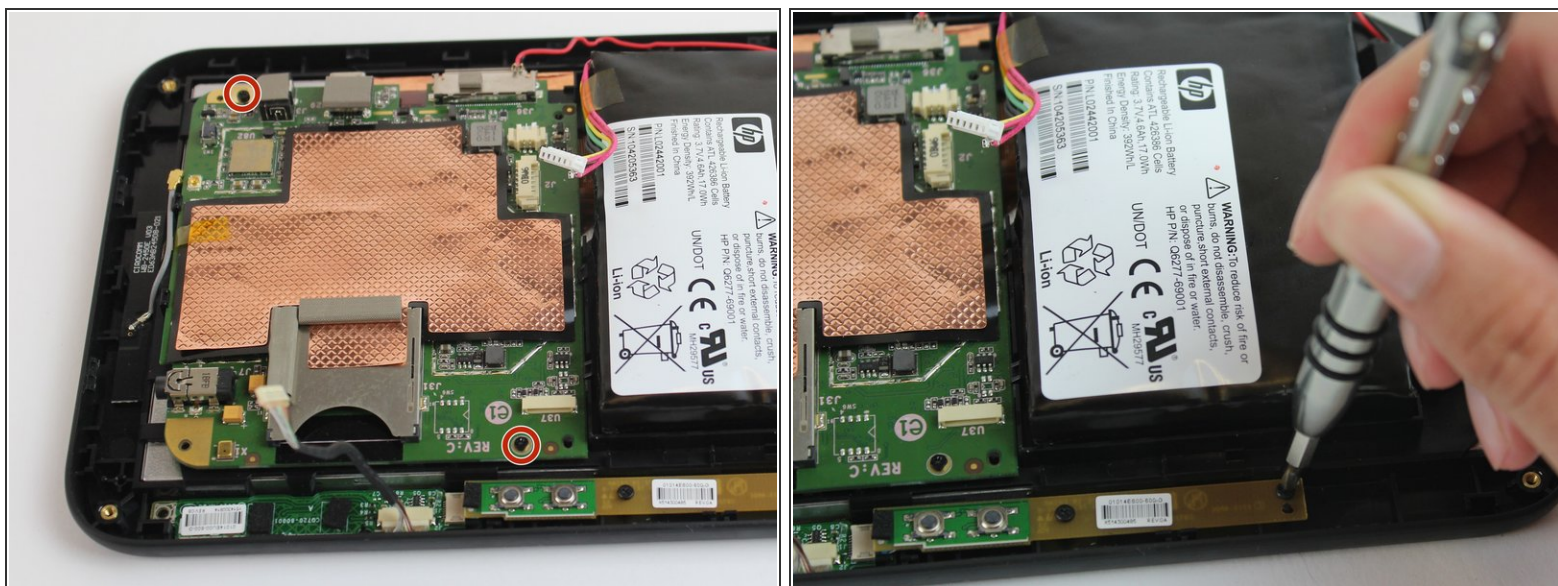
## Step 6



- Disconnect the ground wire from the motherboard with tweezers.

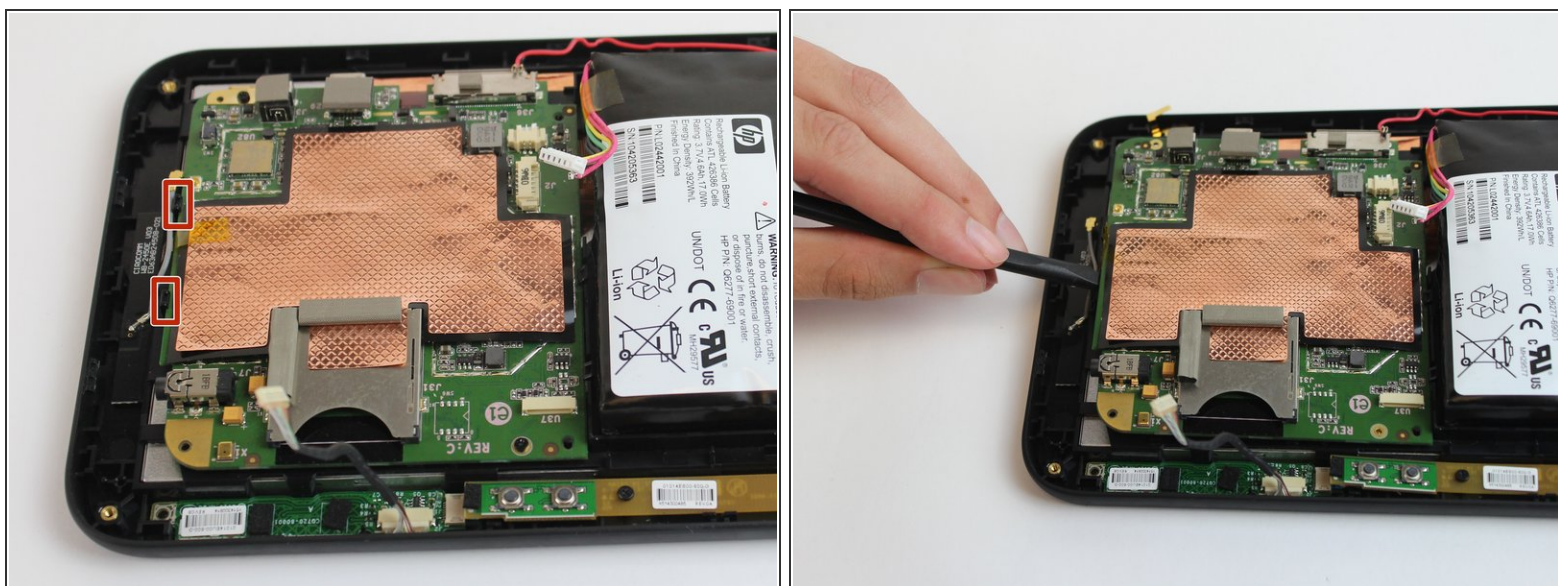


## Step 7



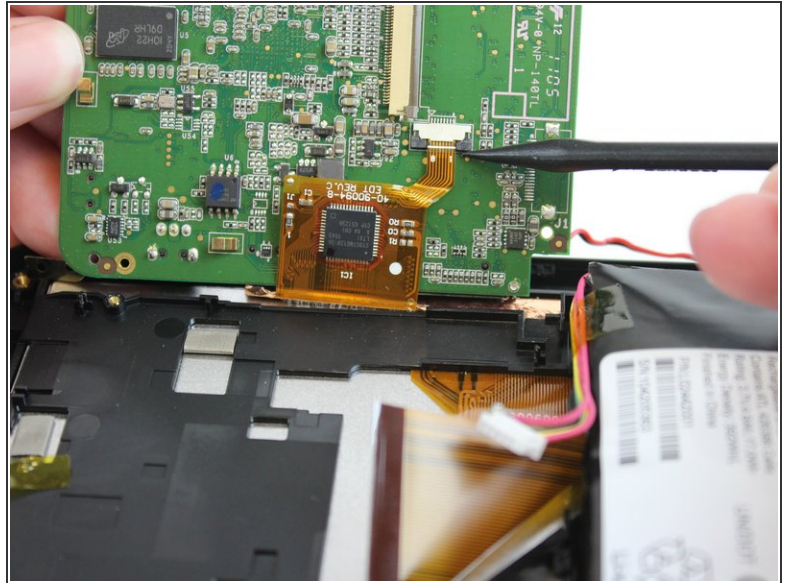
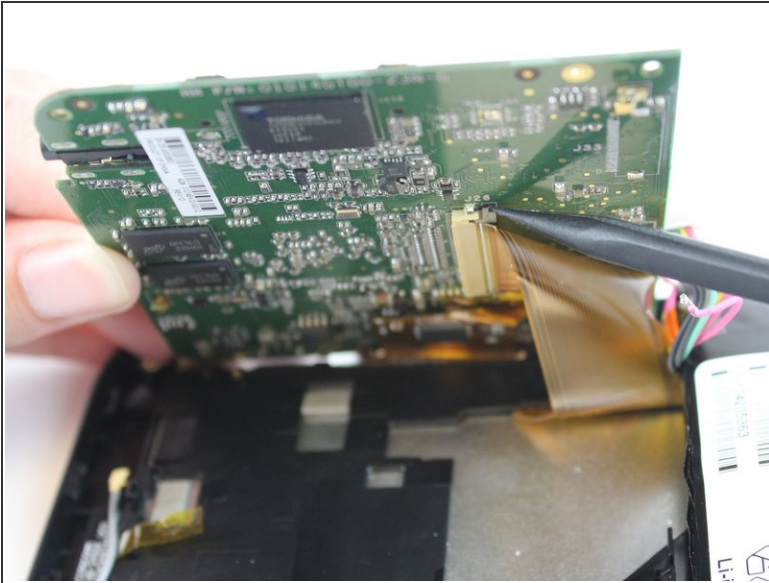
- Remove the two 6mm Phillips screws with Phillips #0 screwdriver.

## Step 8



- Pry off the clips that hold the motherboard down with the plastic spudger.

## Step 9



- Lift motherboard up to expose the ribbons on the back.
- Lift the grey tabs to disconnect the ribbons with plastic spudger.

To reassemble your device, follow these instructions in reverse order.