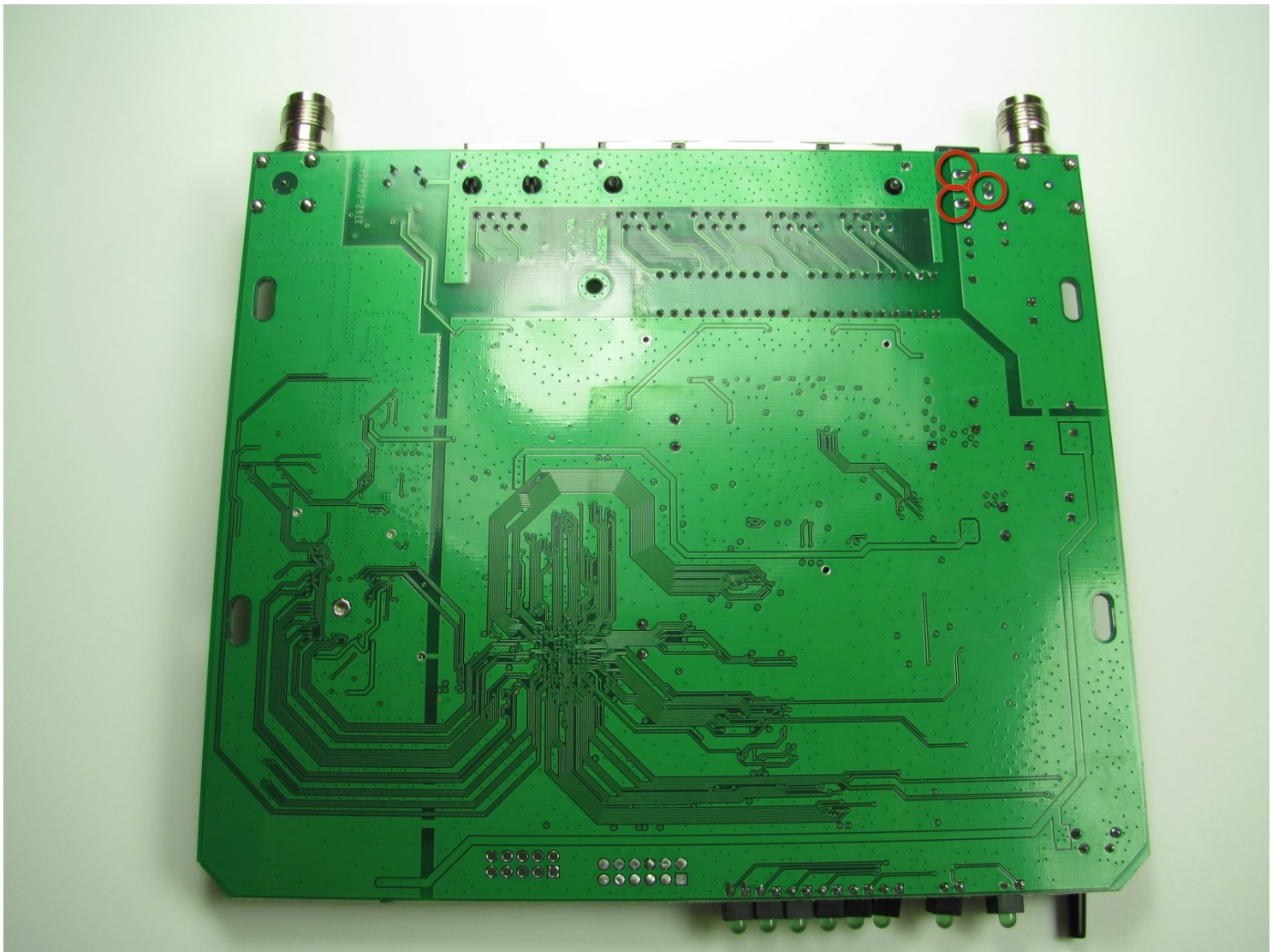




Linksys WRT54GS v2 Power Connector Replacement

This guide will walk you through the process of...

Written By: Alex Do



INTRODUCTION

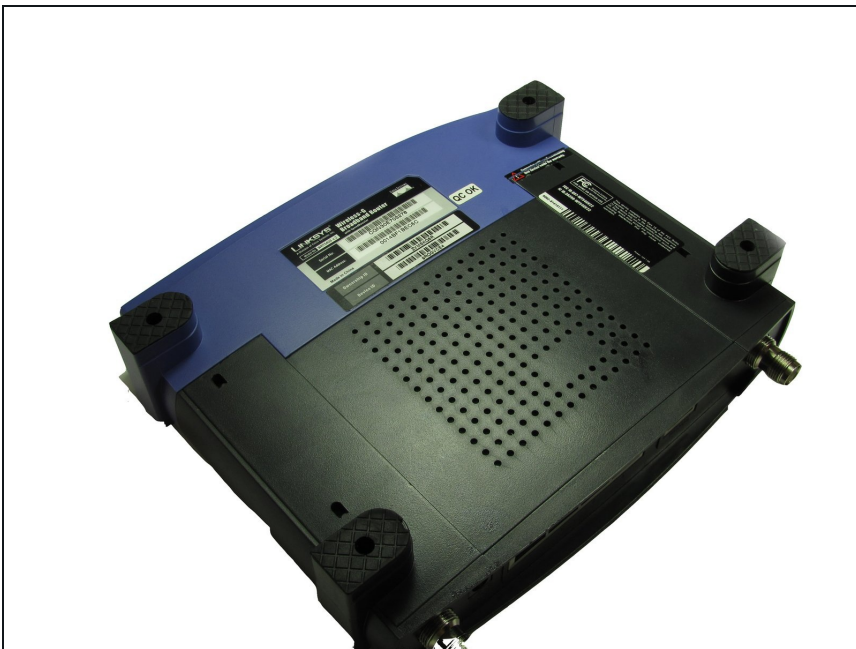
This guide will walk you through the process of replacing the power connector on a Linksys WRT54GS v2 router. You may need to do this if your device isn't receiving power or has been damaged, make sure to check the [troubleshooting guide](#).

Please note that this is a delicate process that involves soldering on a printed circuit board, so it's important to review the guide on [how to solder and desolder connections](#) before starting. Remember to unplug your device before starting the process.

TOOLS:

[Desoldering Braid](#) (1)
[Metal Spudger](#) (1)
[Phillips #2 Screwdriver](#) (1)
[iFixit Opening Tool](#) (1)
[Soldering Iron 60w Hakko 503F](#) (1)

Step 1 — Front Case



- Turn the router over so that all four of its feet are facing upwards.

Step 2



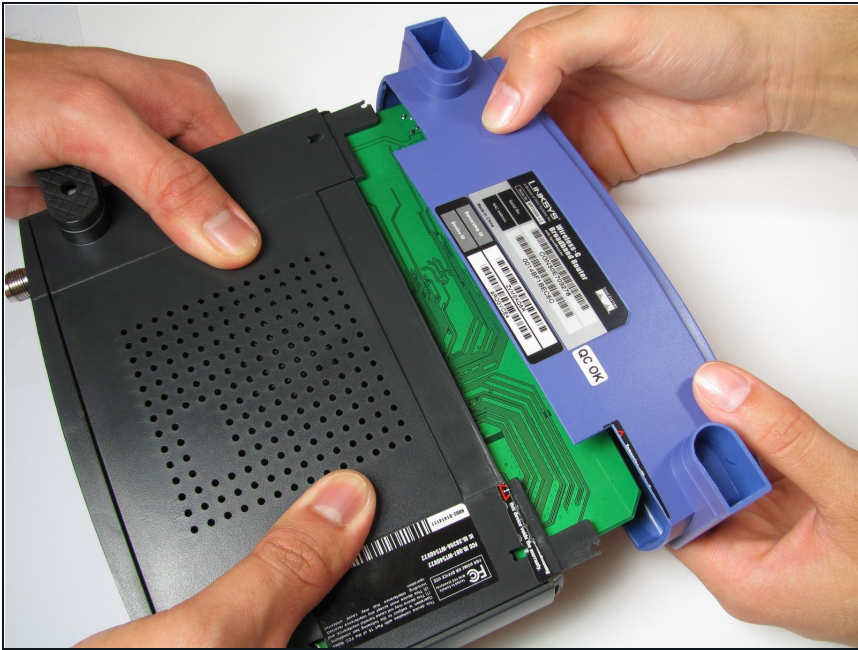
- Remove the rubber inserts inside the the two purple feet located on the router's front case.
- This may be a challenge, so try the following two methods:
 - Use a plastic opening tool. Insert the flat end of the tool into the seam and slowly pry the rubber feet out.
 - Use a metal spudger. Insert the point of the metal spudger directly into the hole of the rubber feet and pry the insert out.

Step 3



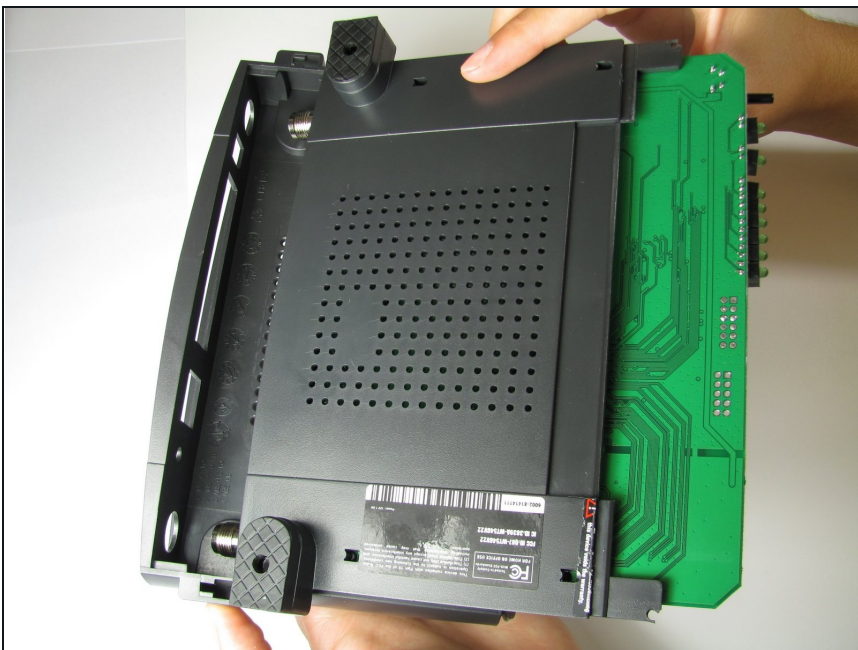
- Use a Phillips #2 Screwdriver to remove the two 5.8 mm screws holding the front case to the motherboard.

Step 4



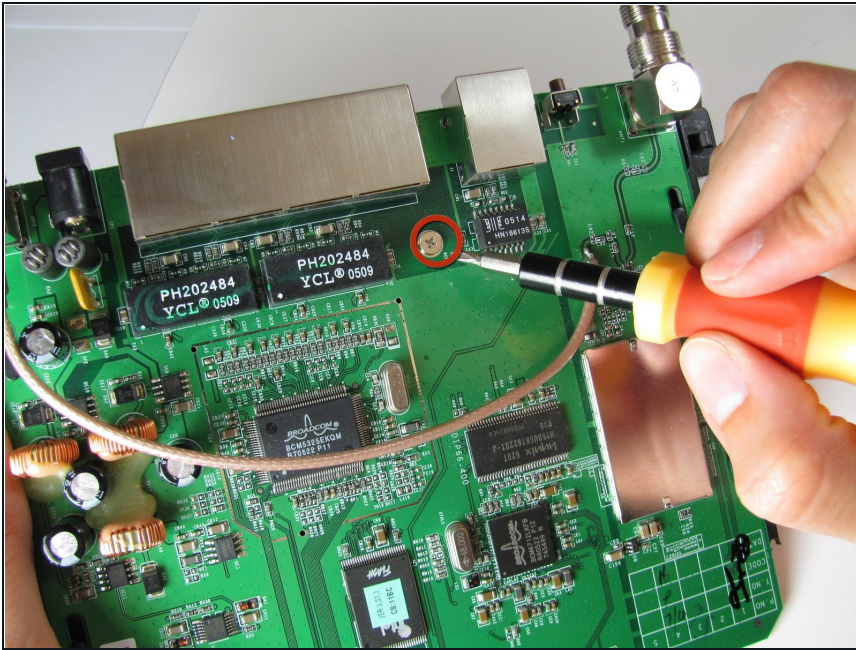
- Squeeze the sides of the router's backcase inward and pull off the purple front case. It is helpful to have a second person assist you for this step.

Step 5 — Motherboard



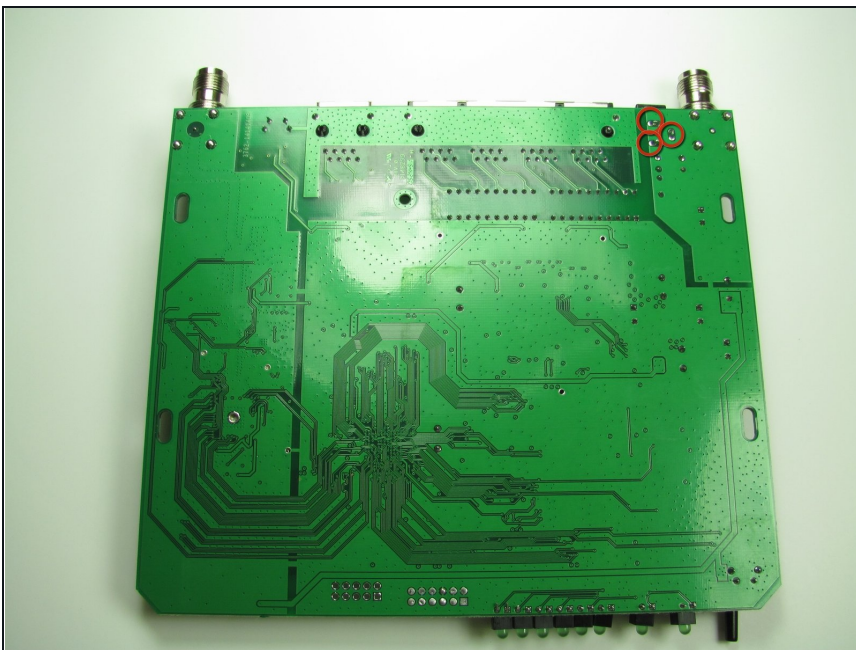
- Slide the board unit out and up.

Step 6



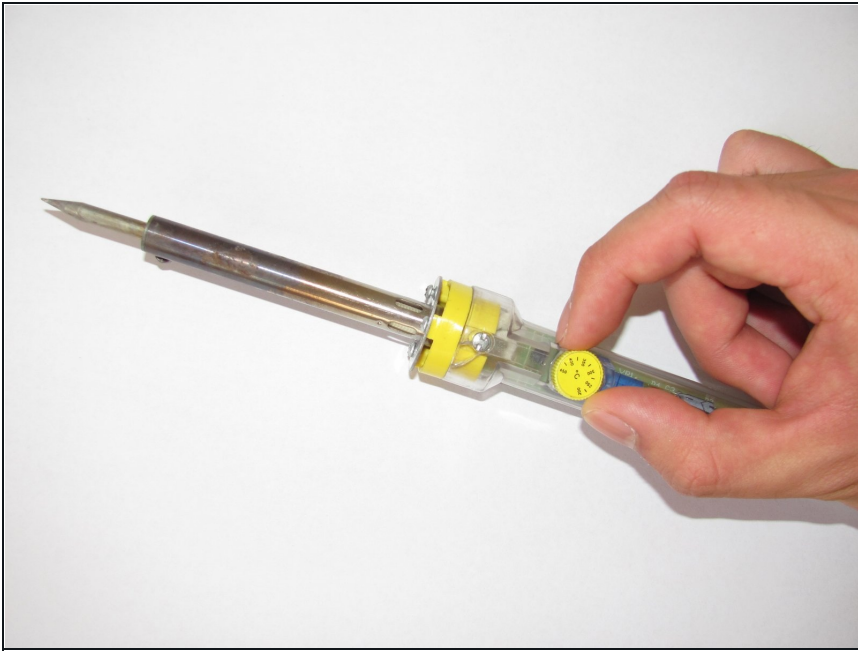
- Flip the circuit board over and use a Phillips #2 Screwdriver to remove the 6.9mm screw holding the board to the back case.
- Slide the back cover out and away from the circuit board.

Step 7 — Power Connector



- Turn the circuit board over.
- Identify the solder connections on the board, marked in red.

Step 8



- Desolder the connection by following iFixit's guide to repairing soldered connections: [How To Solder and Desolder Connections](#).
- Remove the Power Connector from the board.
- Insert the replacement power port and resolder the connectors.

To reassemble your device, follow these instructions in reverse order.