



Shark Rocket HV301 Hose Replacement

The hose of the Shark Rocket HV301 may need to...

Written By: Shelby Baccala



INTRODUCTION

The hose of the Shark Rocket HV301 may need to be replaced if a hole has been worn into it. This can cause weak suction and for your vacuum to not operate properly. If this is the case, follow this guide to replace the hose on your HV301. This guide may also be used to disconnect your hose to remove a blockage.

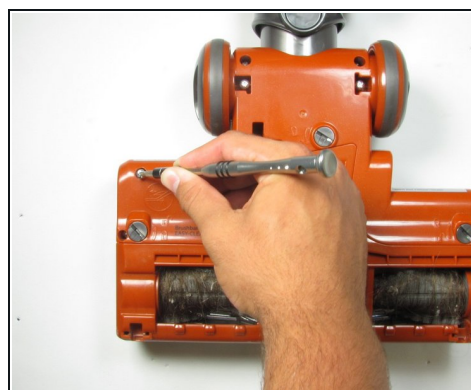
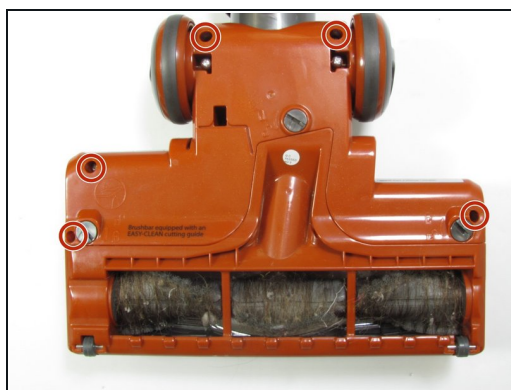
TOOLS:

Phillips #2 Screwdriver (1)

PARTS:

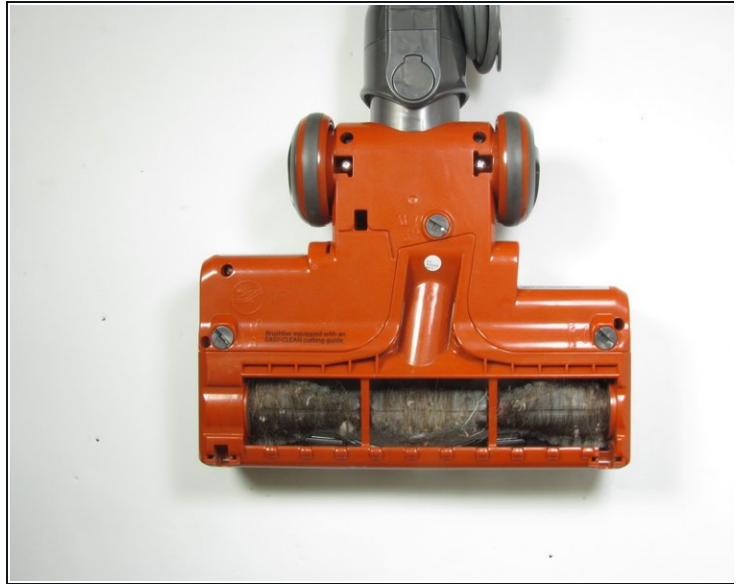
Shark Rocket HV301 Hose (1)

Step 1 — Hose



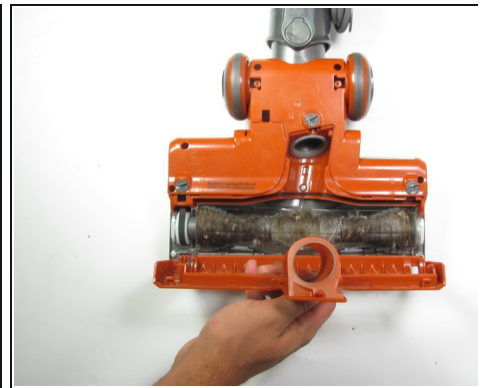
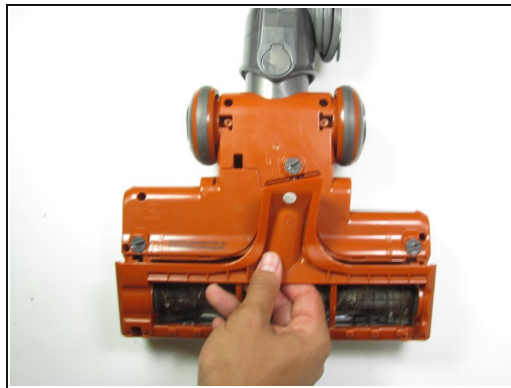
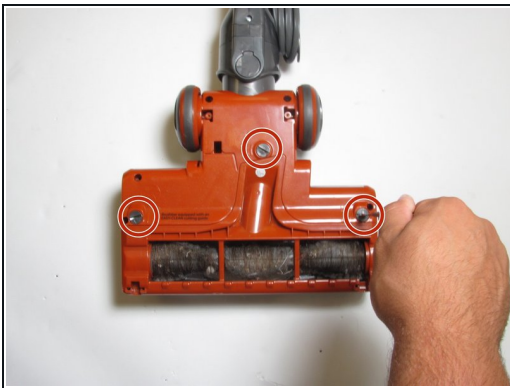
- Place the base of the vacuum face down so the roller brush is facing you.
- Locate the five screws and remove the screws using a Phillips #1 screwdriver.
- ① You may want to disconnect the base from the stick of the vacuum to make it easier to move around.

Step 2



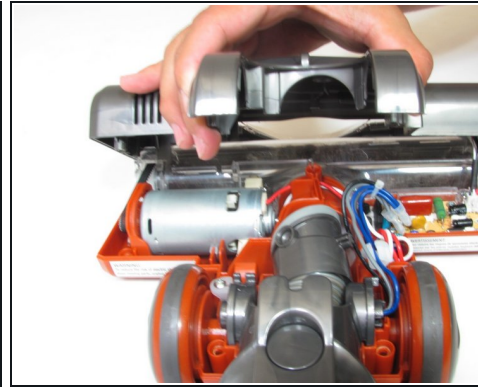
- Locate and remove the two small wheels below the roller brush by prying with a plastic prying tool.
- ⓘ This may require some force.

Step 3



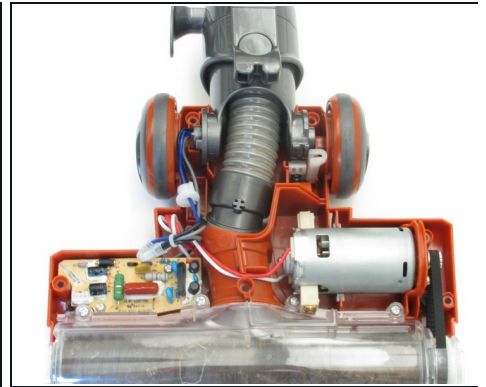
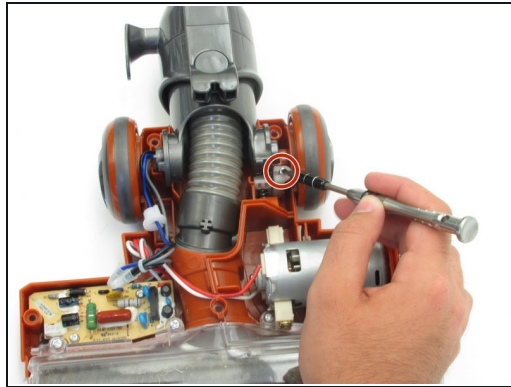
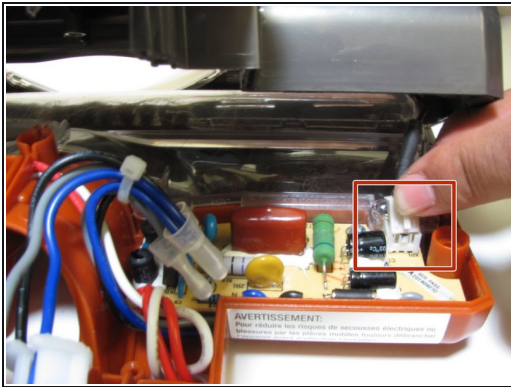
- Locate and twist the three plastic screws to the unlock position with a quarter or flathead screwdriver.
- Pull up on the plate covering the roller brush and remove it.

Step 4



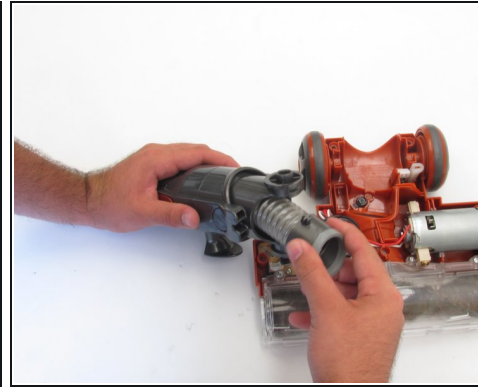
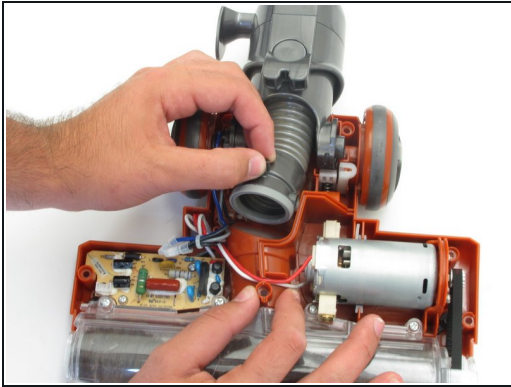
- Turn the vacuum over so the roller brush is on the ground.
- Grab the vacuum on both sides of the hose and pull up to remove the top of the vacuum halfway.

Step 5



- Gently pinch head of cable and pull upwards until upper casing disconnects from vacuum and proceed with removing upper casing.
- Return the vacuum to its original position with the roller brush facing you.
- Locate the screw to the right of the vacuum hose, close to the right wheel, and remove the screw with a Phillips #2 screwdriver.
- Note: some models may not include this screw.

Step 6



- Pull on the dark gray end of the hose that attaches to the roller brush chamber to remove the hose from the base.
- ⓘ This may require some force.
- Twist the hose out of the chamber that attaches the stick to the base.

To reassemble your device, follow these instructions in reverse order.