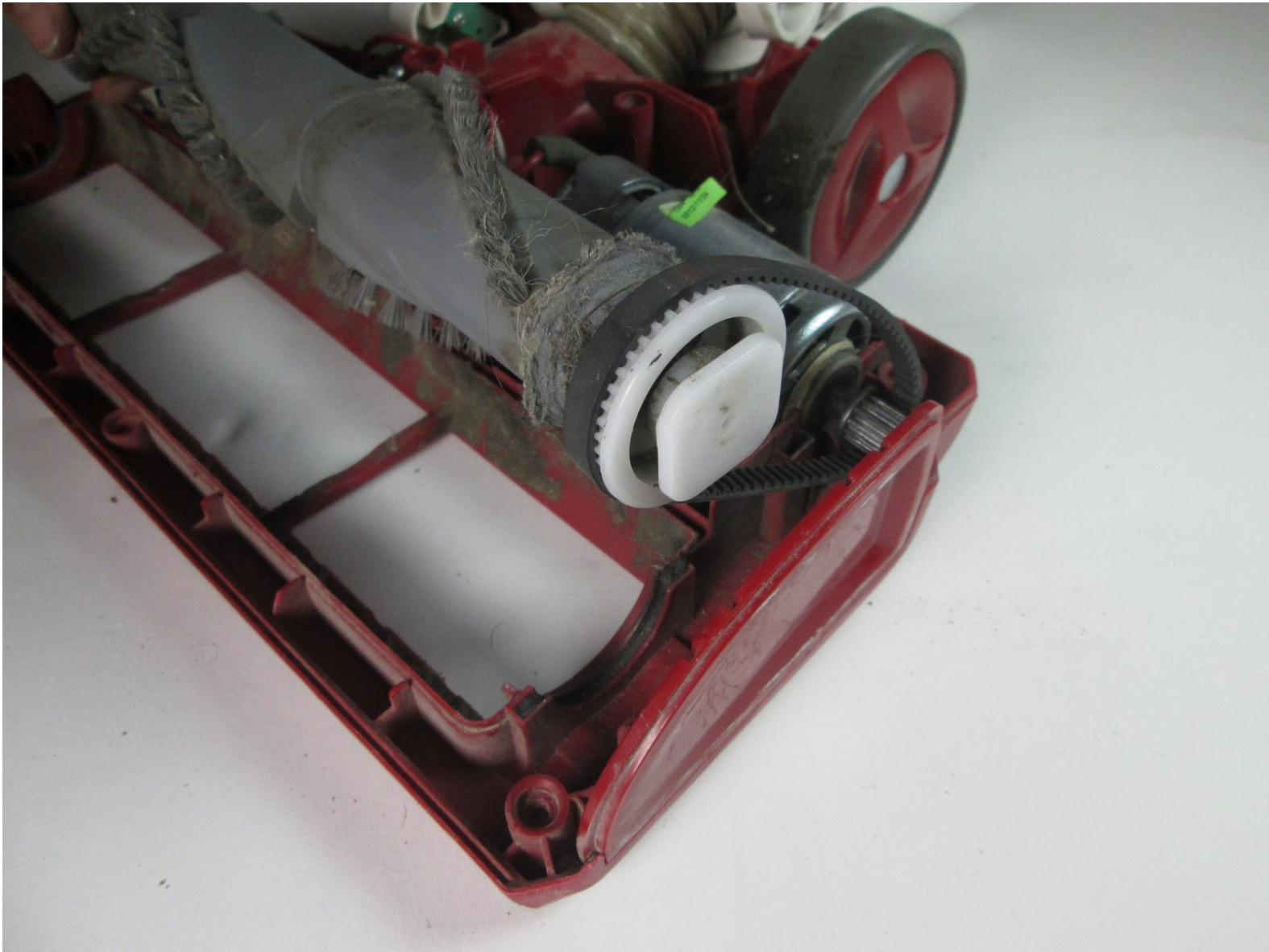




Shark Rotator NV502 Roller Belt Replacement

Replacing the roller belt on the Shark Navigator NV502.

Written By: Caroline Swanson



INTRODUCTION

If the roller brush is not spinning, check the roller belt to see if it needs replacing. The vacuum will still turn on but the brush will not spin if the belt is broken.



TOOLS:

- [Metal Spudger](#) (1)
- [Phillips #2 Screwdriver](#) (1)



PARTS:

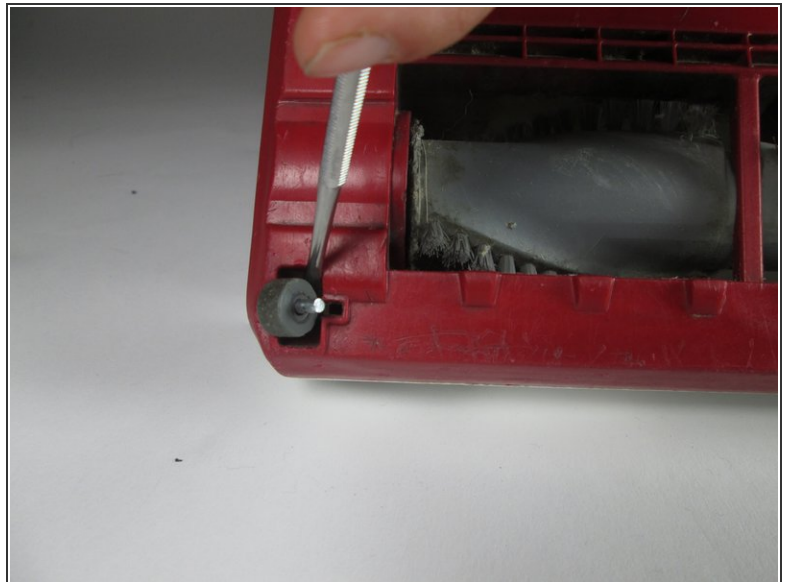
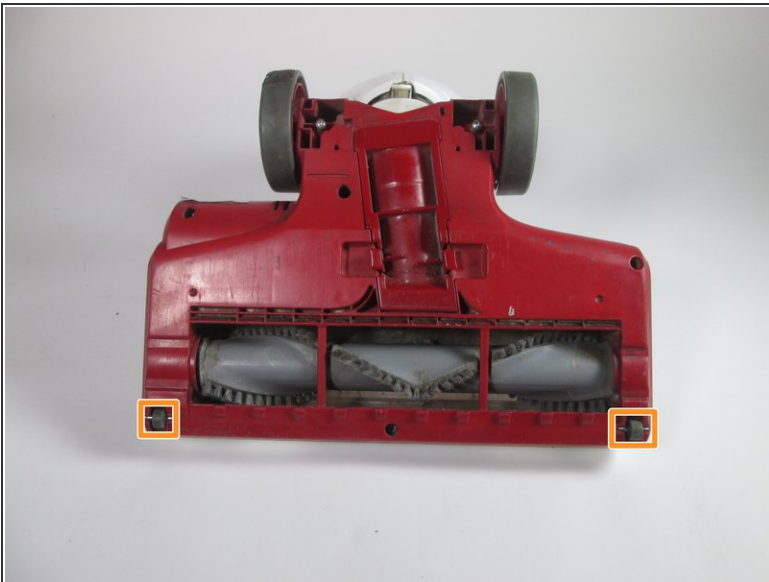
- [Shark Rotator NV502 Roller Belt](#) (1)

Step 1 — Roller Brush



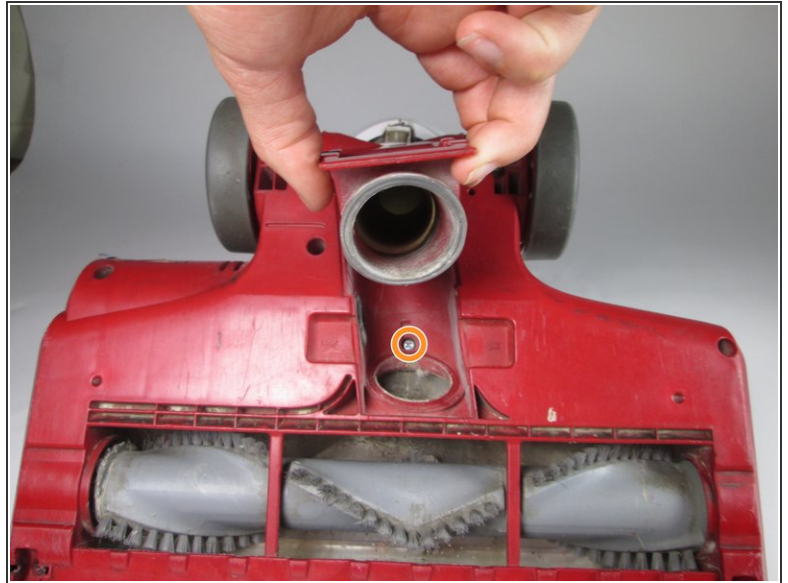
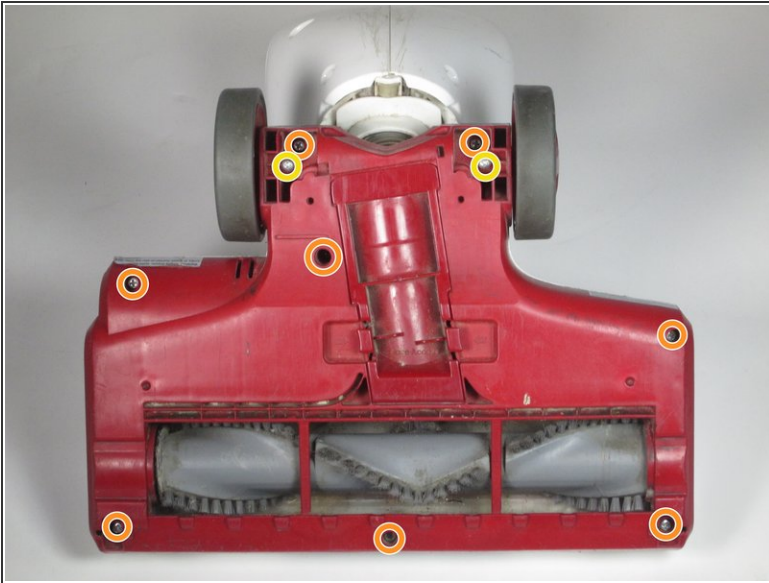
- Pull the handle while pressing the lift away button to remove the body of the vacuum.

Step 2



- Flip the base of the vacuum over to access the bottom.
- Remove the two small wheels with a metal spudger.

Step 3



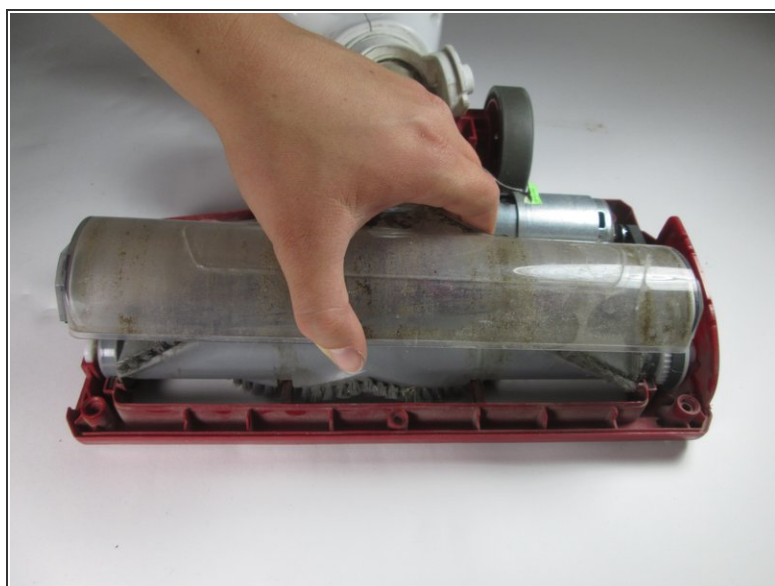
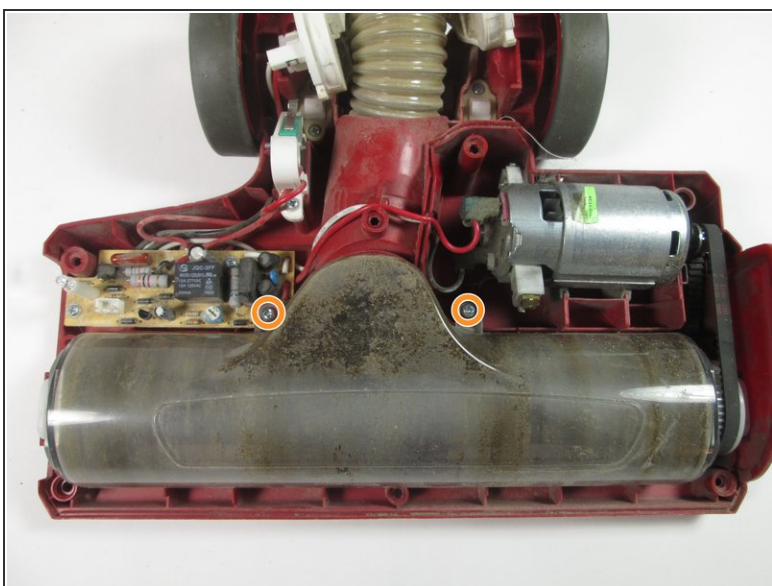
- Remove the nine 16 mm screws using the Phillips #2 Screwdriver. Press on the side tabs in the middle of the panel and pull up to reveal the screw under the hose connection.
- Remove the two 13.5 mm screws using the Phillips #2 Screwdriver.

Step 4



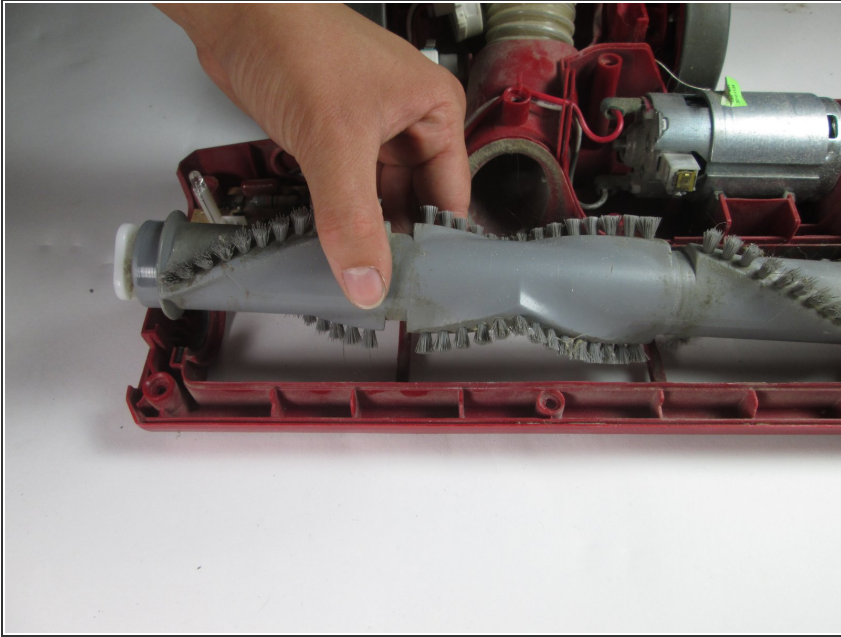
- Pull up on the cover and move it to the side.
- Remove the wire attached to the base by squeezing the pin and pulling up.

Step 5



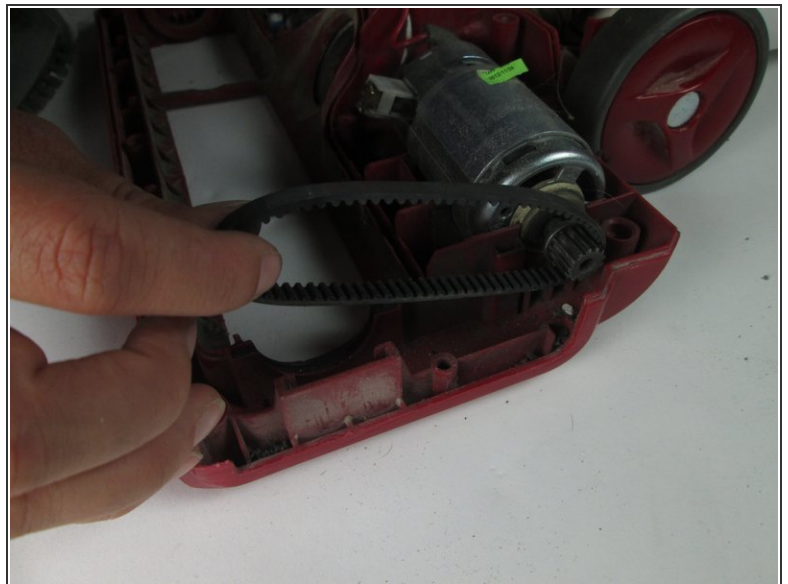
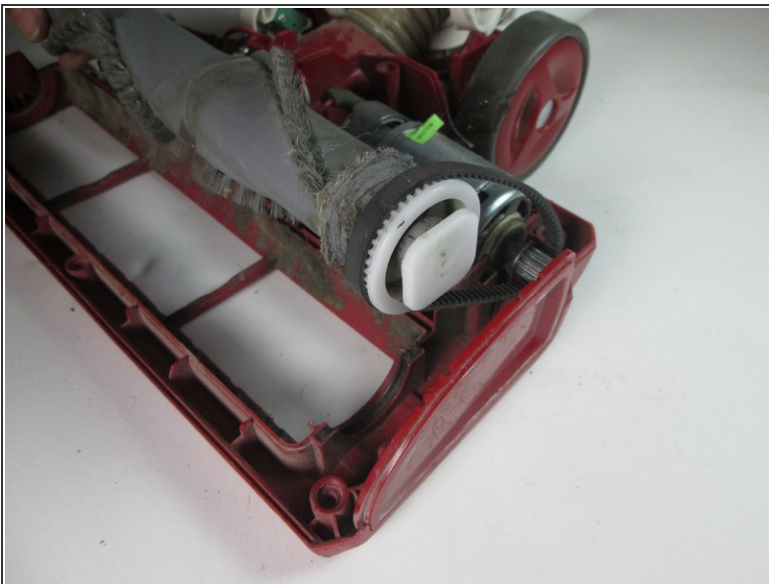
- Remove the two 11 mm screws using the Phillips #2 screwdriver.
- Lift the roller brush cover up.

Step 6



- Pull out the roller brush.

Step 7 — Roller Belt



- Remove the roller belt from around the roller brush and the motor gear.

To reassemble your device, follow these instructions in reverse order.