



# Dell Inspiron 14z-5423 Palm Rest Assembly Replacement

This guide will teach users how to remove and replace the Palm Rest Assembly on the Dell Inspiron 14z-5423.

Written By: Cynthia Leng



---

## INTRODUCTION

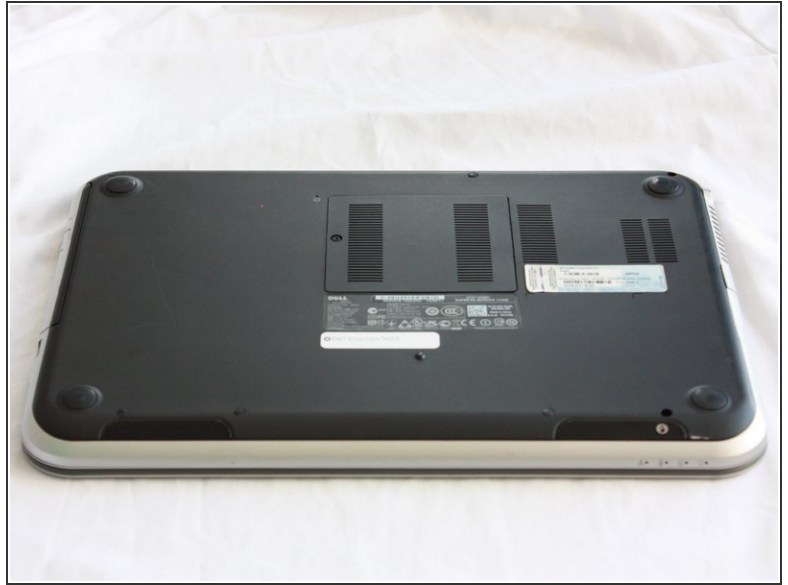
The palm rest assembly is the casing surrounding the keyboard. This may become worn down, scratched, or cracked over time. Replacement of this part is mainly cosmetic but may enhance the user experience.



### TOOLS:

- [JIS Driver Set](#) (1)
  - [Tweezers](#) (1)
  - [Spudger](#) (1)
-

## Step 1 — RAM



- Close the display and turn over the computer.

⚠ Make sure your device is powered down and unplugged before beginning the replacement.

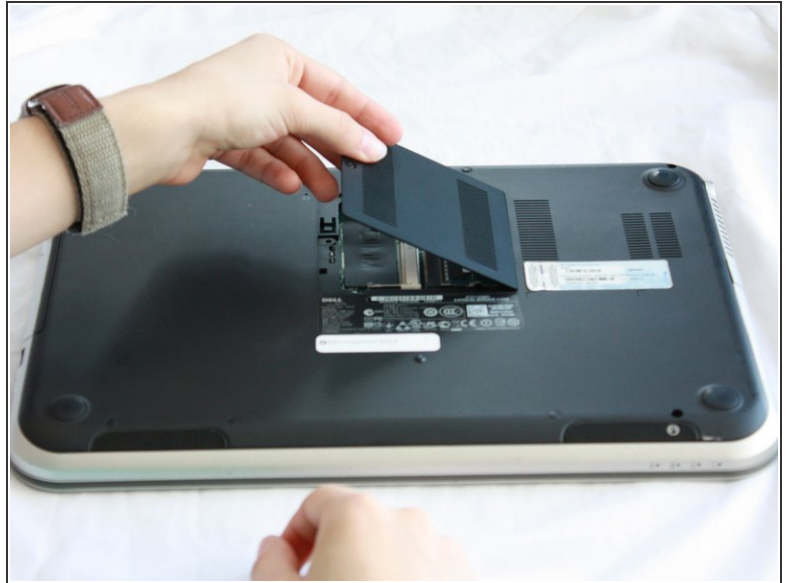
## Step 2



- Use a J0 bit tipped screwdriver to unscrew the one 6 mm Phillips screw on the RAM cover.

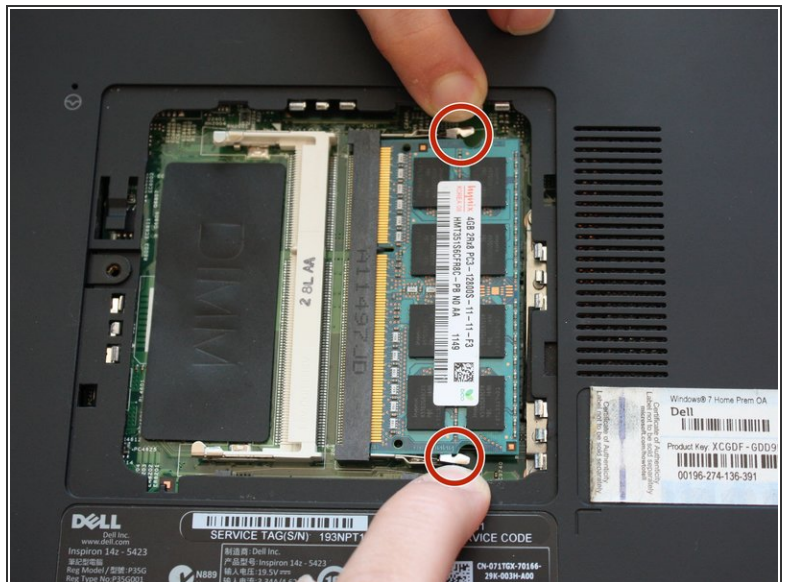


## Step 3



- Lightly lift the RAM cover up and at an angle, away from the computer.

## Step 4



- Use your fingers to carefully pull the securing clips on the RAM away from each other.

**i** The RAM should pop up when the clips are released.

## Step 5

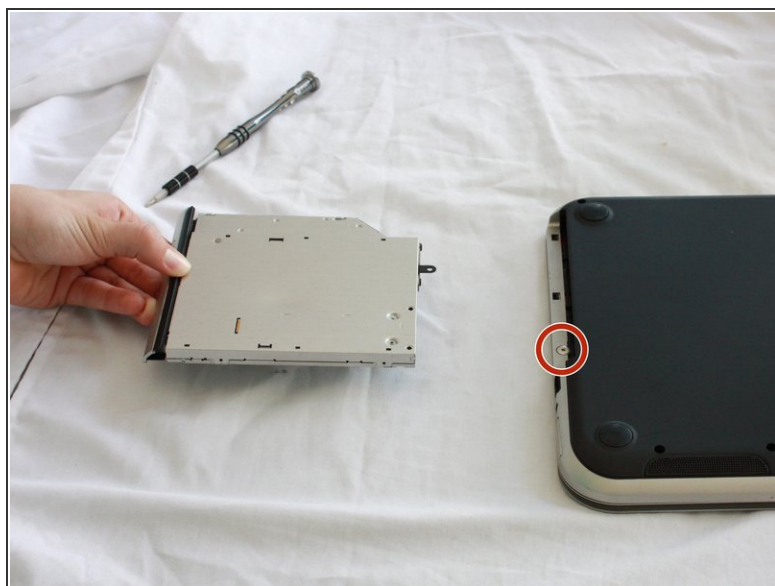


- Remove the popped up RAM by pulling it away from the connection.

**i** If it does not pop up pry it out in a steady and straight direction.

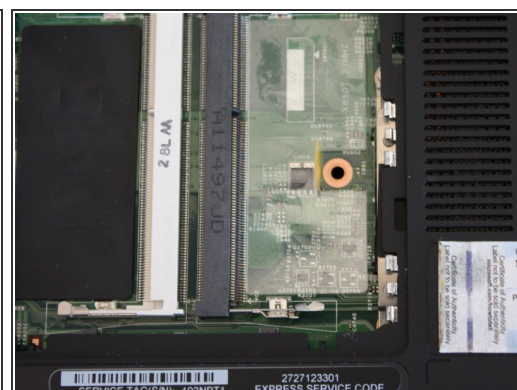
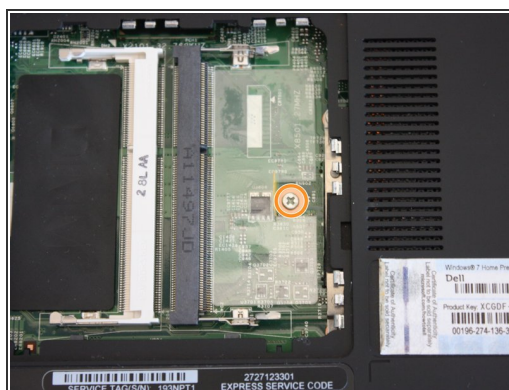
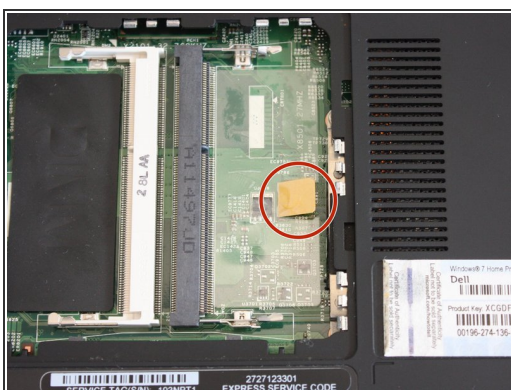


## Step 6 — Optical Drive



- Slide the CD/DVD drive on the side of the laptop out using your fingers.
- Using a J0 bit screwdriver, unscrew the one 2 mm Phillips screw.
- ⓘ You only need to unscrew this screw if you are using this as a prerequisite guide.

## Step 7 — Keyboard



- Lift the plastic yellow flap on the system board.
- Use the J0 Bit screwdriver to remove the one 6 mm Phillips screw in center of the system board that is connected to the keyboard.

## Step 8



- Flip over the computer and open the display.

## Step 9



- Insert a spudger next to the plastic indents located at the top of the keyboard and gently pry to release the securing clips.
  - Lift the keyboard off of the computer.
- ⚠ Be careful not to tear the ribbon that attaches the back of the keyboard to the computer when lifting it.

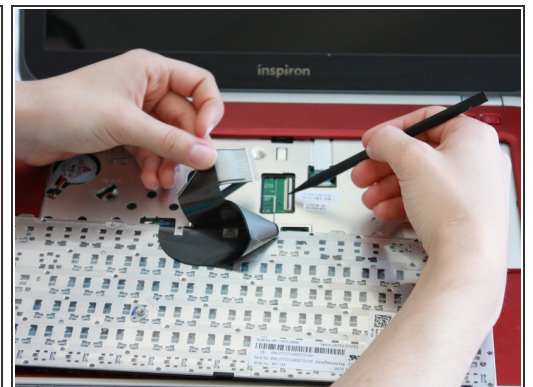
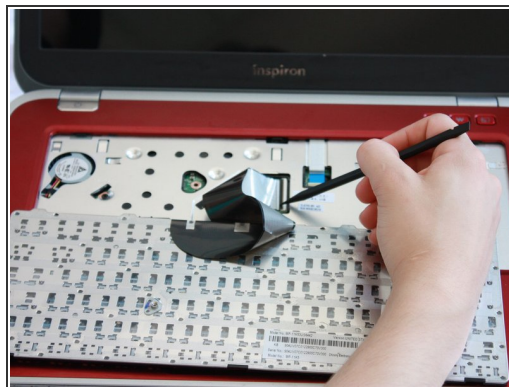
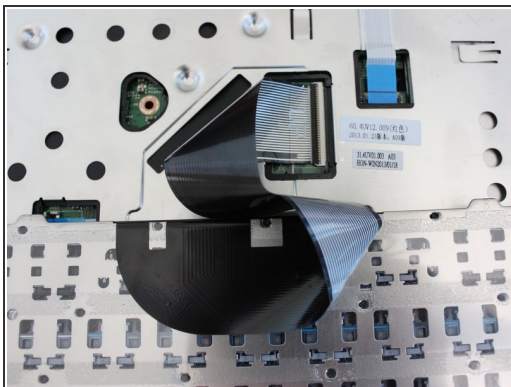


## Step 10



- Flip the keyboard over onto the palm-rest assembly.

## Step 11



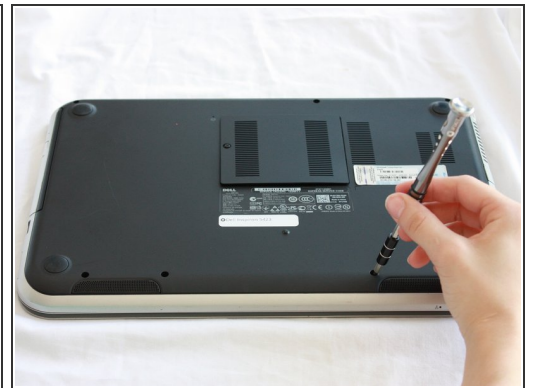
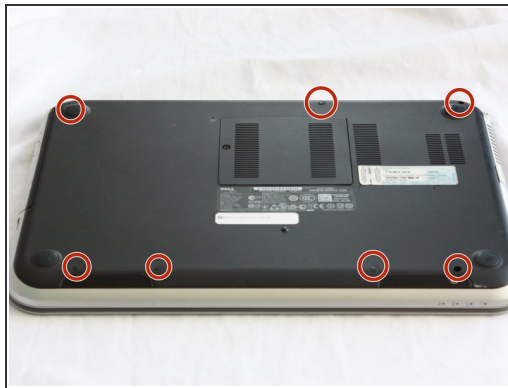
- Flip the little black securing bar near the base of the ribbon with a spudger to release the ribbon from the computer.

## Step 12 — Palm Rest Assembly



- Close the display and turn over the computer.

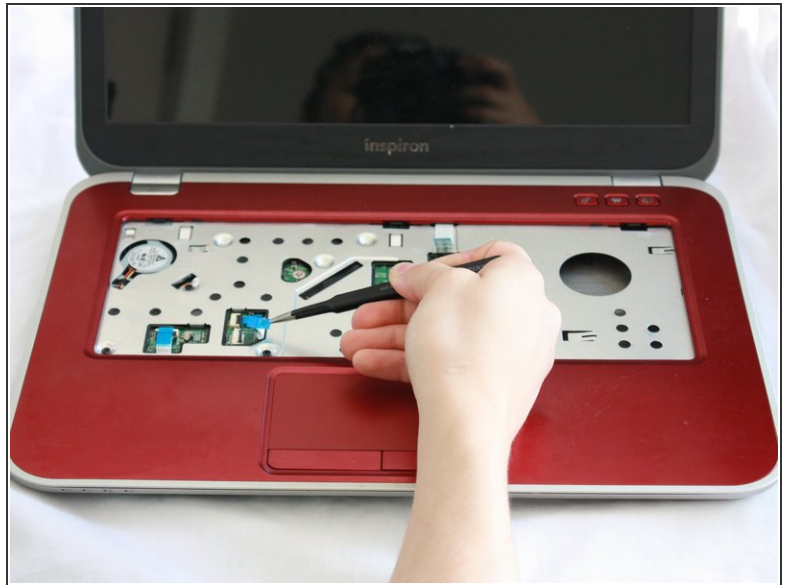
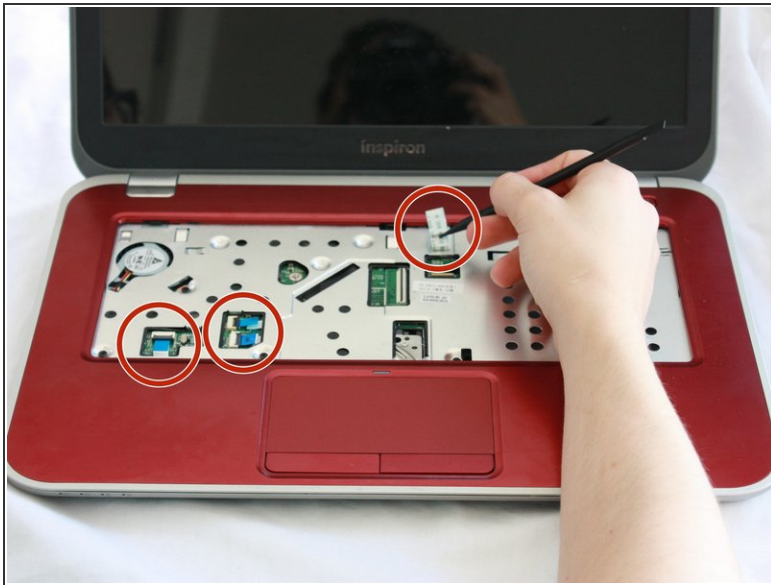
## Step 13



- Remove all 7 rubber screw caps with tweezers.
- Use a J0 Bit tipped screwdriver unscrew the seven 6 mm Phillips screws on the back casing of the laptop.

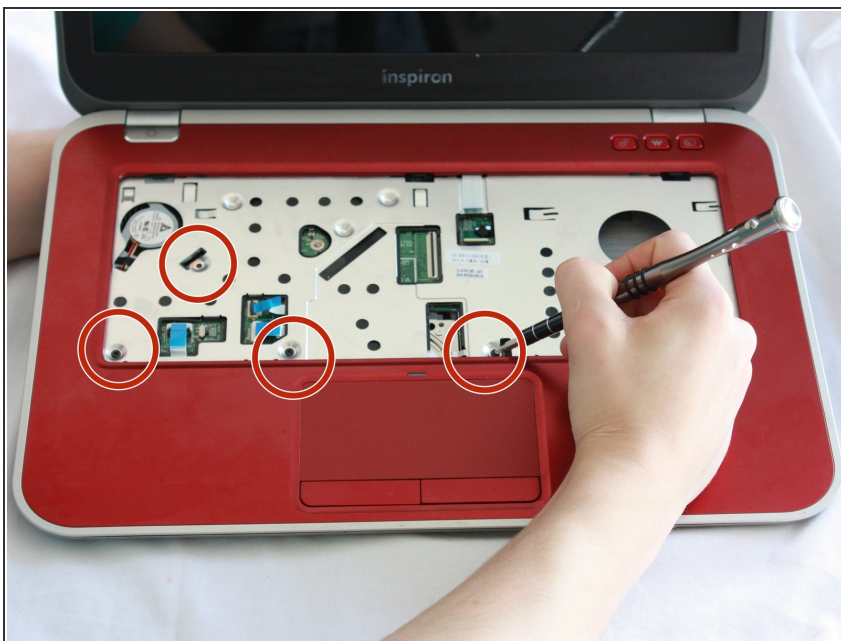


## Step 14



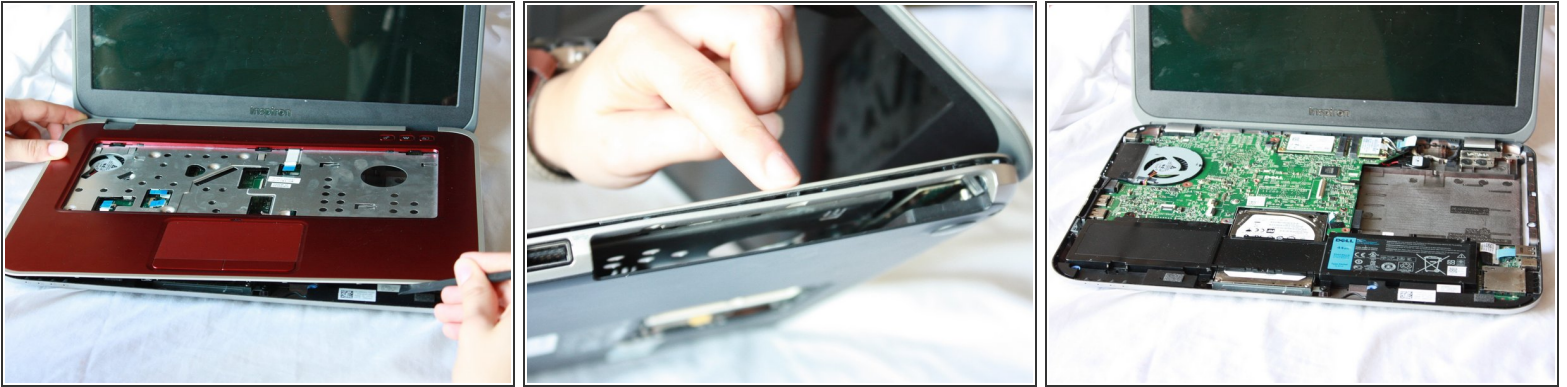
- Flip the computer over and open the display.
- Pull on the blue tabs to disconnect the palm rest assembly from the computer.

## Step 15



- Use J0 Bit screwdriver to remove all four 6 mm Phillips screws.

## Step 16



- Gently wedge the nylon spudger underneath the palm-rest assembly to release the latches.
  - Continue this process on all sides of the computer edges until the assembly pulls off.
  - Remove the palm rest assembly.
- i** If you have difficulty lifting up the assembly, you might not have taken out all 7 screws on the bottom of the computer.

To reassemble your device, follow these instructions in reverse order.