



Axa Security Greenline 50 LED Bike Headlight Disassembly

Your Axa 50 light doesn't work any more after shock or vibration? There are some poorly soldered wires inside which might be the cause. They are easy to fix, but opening the casing is tricky, since it was designed to be waterproof rather than fixable.

Geschrieben von: Martin Kuklinski





WERKZEUGE:

- [Plastic spatula](#) (1)
- [PH00 Screwdriver](#) (1)

Schritt 1 — Axa Security Greenline 50 LED Bike Headlight Disassembly



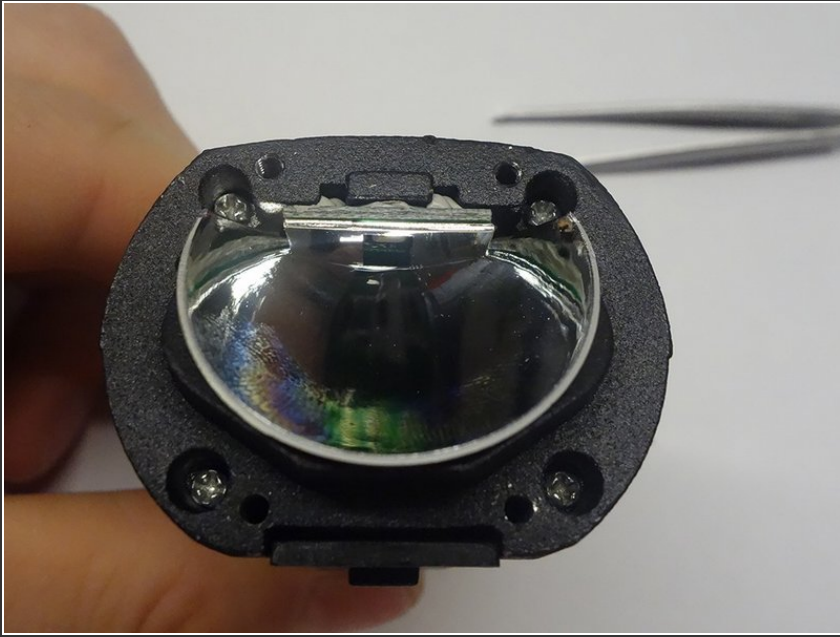
- The key to opening the light's casing is to get rid of the black cover in the front. This is the part that covers up the screws you need to get to first. Unfortunately, it has been glued on in a few spots, poor work Axa! It's best to use a stable plastic tool, so as not to break the plastic (like I did).
- Also, start working from the side rather than from the front, so as not to scratch the lens.

Schritt 2



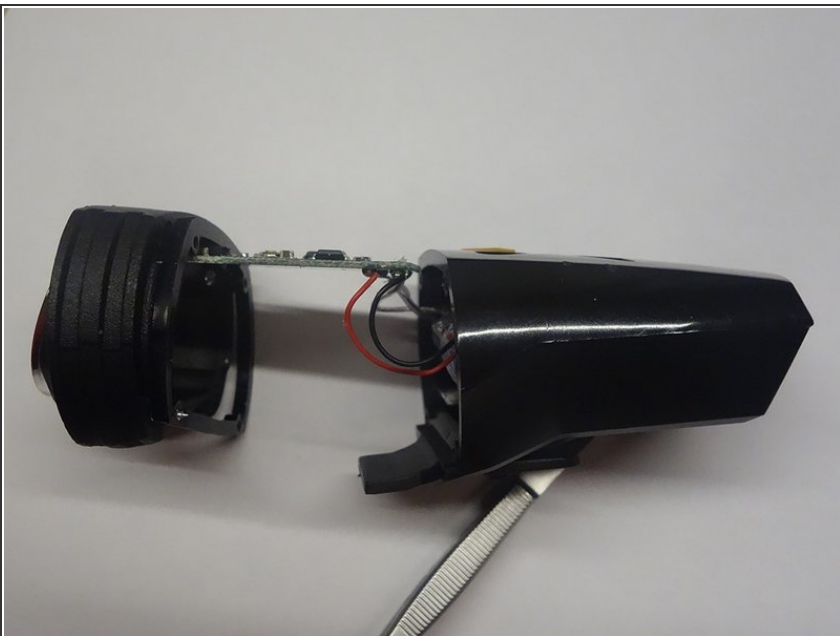
- Remove the four screws that attach the lens to the metal cooler of the LED

Schritt 3



- This reveals the four screws holding the plastic back cover to the metal central chassis. Remove them as well

Schritt 4



- The black one should be soldered to "GND"
- The red wire belongs where it says "Bat.+"
- Now you can pull out the main circuit board, be careful not to tear off any more of the tiny wires. Also, make sure you don't short circuit the LiPo Battery pack (1s2P 1000mAh)

- The wires with transparent insulation are for the charging connector. After soldering everything back in its place, slide the board back into its slot on top of the battery. Watch out for the tiny plastic bit of the on/off-button, that should be in its place in the orange silicon button-cover and tends to fall out.
- Don't use force to slide the board into the slot, otherwise you are likely to tear off one of the wires again. When everything is in place, test if you light works fine (test light AND charging!) before screwing everything together again.
- At last, glue the black lens cover on again. Don't use too much glue, in case you have to open the light later. Also make sure you don't touch the lens with glue on your fingers! A bit of scotch tape serves well as protection film until the glue is dry.

Arbeite die Schritte in umgekehrter Reihenfolge ab, um dein Gerät wieder zusammenzubauen.