



Canon 7210 Exterior Shell Replacement

Replace the top exterior shell to your projector, in case it is damaged. Also helpful to know how to remove in order to replace other components.

Written By: William Christian



INTRODUCTION

This guide demonstrates how to replace the top exterior shell for the Canon LV-7210. This repair may be necessary if the projector has sustained cosmetic damage. The only tool you will need for this guide is a screwdriver.



TOOLS:

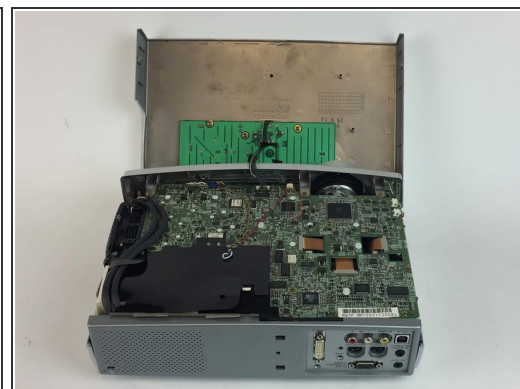
- [Phillips #0 Screwdriver](#) (1)
-

Step 1 — Exterior Shell



- Remove the 4 exterior 9mm Phillips #0 screws. They are located on the sides of the projector.

Step 2



- Gently lift up on the shell with both hands, from the back to the front.

i The shell will still be attached by a small cord in the front, so be careful not to tear it loose.

To reassemble your device, follow these instructions in reverse order.