



Holmes HEH8031 Housing Replacement

Holmes HEH8031 Housing Replacement Prerequisite Only

Written By: Deanna Jack



INTRODUCTION

Holmes HEH8031 Housing Replacement

Prerequisite Only



TOOLS:

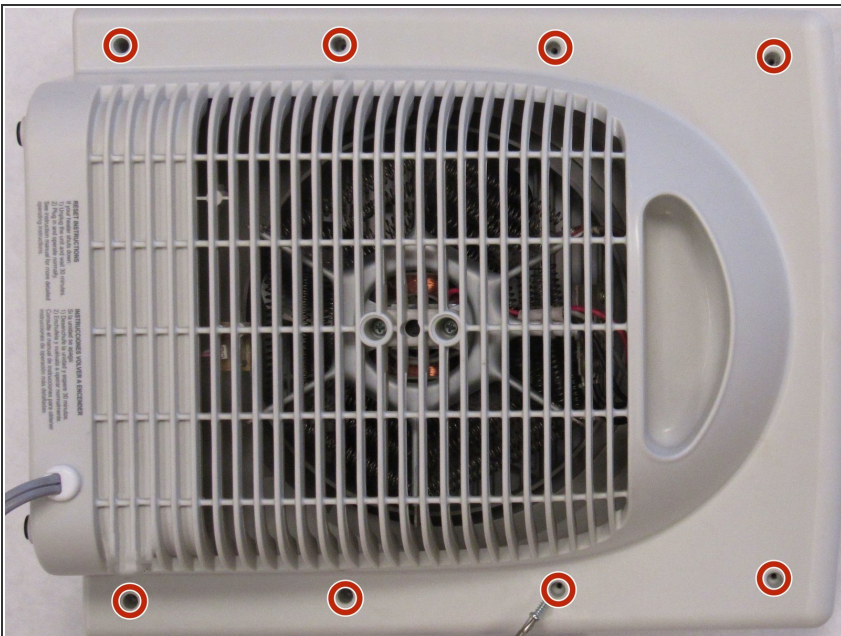
- [Phillips #2 Screwdriver](#) (1)
-

Step 1 — Housing



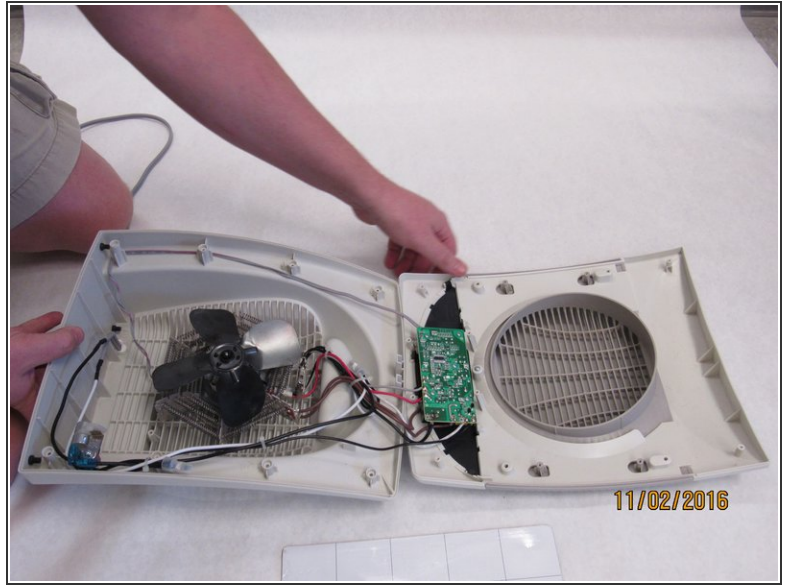
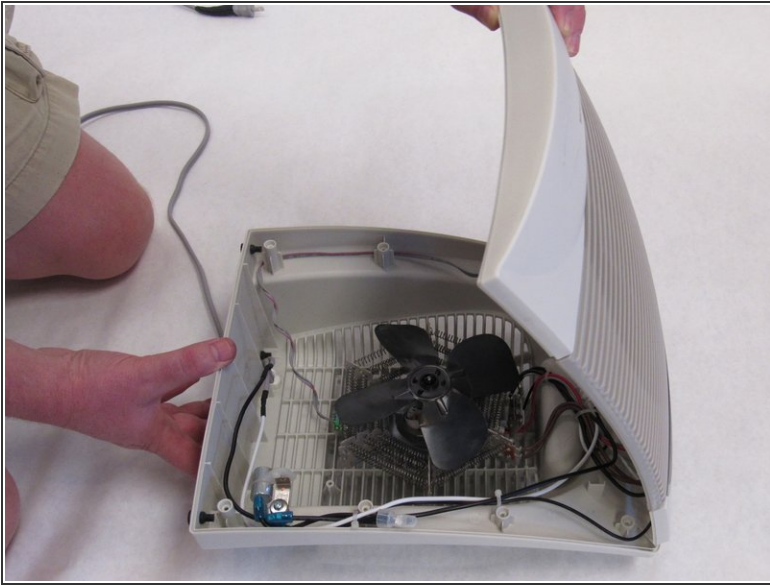
- Ensure the device is unplugged from the wall outlet.

Step 2



- Remove eight 12-mm Phillips #2 screws from the back cover.

Step 3



- Turn heater over so the controls are facing up.
- Lift the front housing away from the back of the fan and slowly fold the front housing back down to the floor.
- ⓘ Internal wires are connected to both halves of the housing. Be careful when separating the housing.

To reassemble your device, follow these instructions in reverse order.