



# Amazon Kindle DX LCD Replacement

This guide will help to show the user how to replace the LCD screen on the Amazon Kindle DX.

Written By: Lori White



---

## INTRODUCTION

This guide will show users how to replace the LCD screen on the Amazon Kindle DX in just a few simple steps.

**Note: This guide is incomplete, the motherboard will need to be removed before the screen can be replaced.**



### TOOLS:

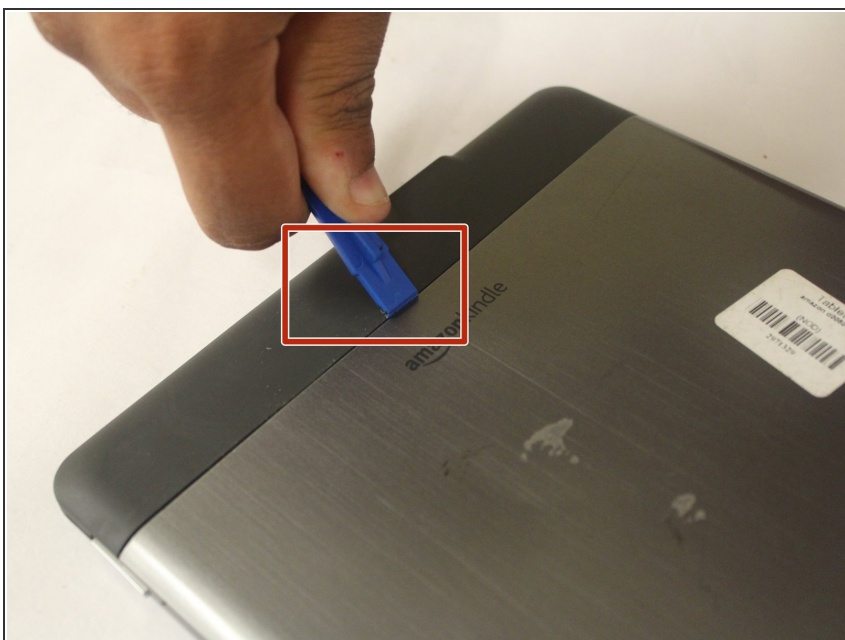
- [Phillips #00 Screwdriver](#) (1)
  - [Phillips #0 Screwdriver](#) (1)
  - [Heavy-Duty Spudger](#) (1)
  - [Phillips #000 Screwdriver](#) (1)
-

## Step 1 — Liquid Crystal Display (LCD)



- Take your Kindle and place it screen side down in order to open it from the back. Use the opening tool from the iFixit tool kit and insert it between the metal casing and plastic top piece.

## Step 2



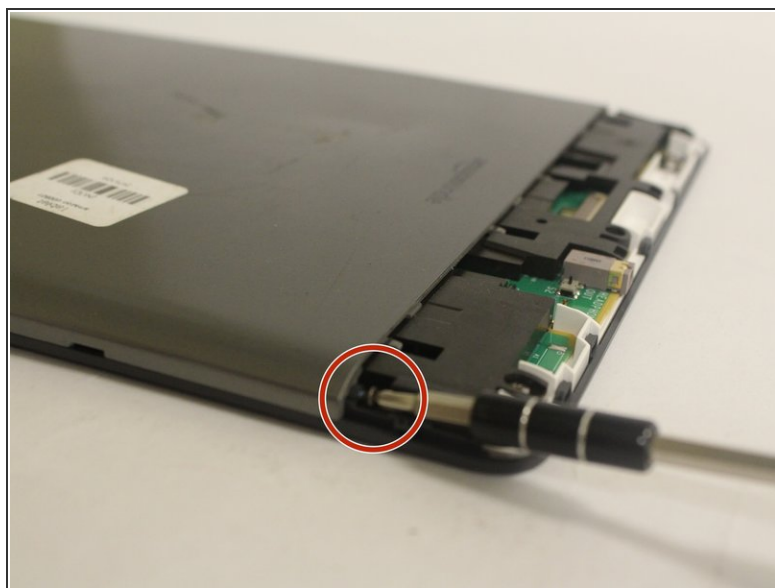
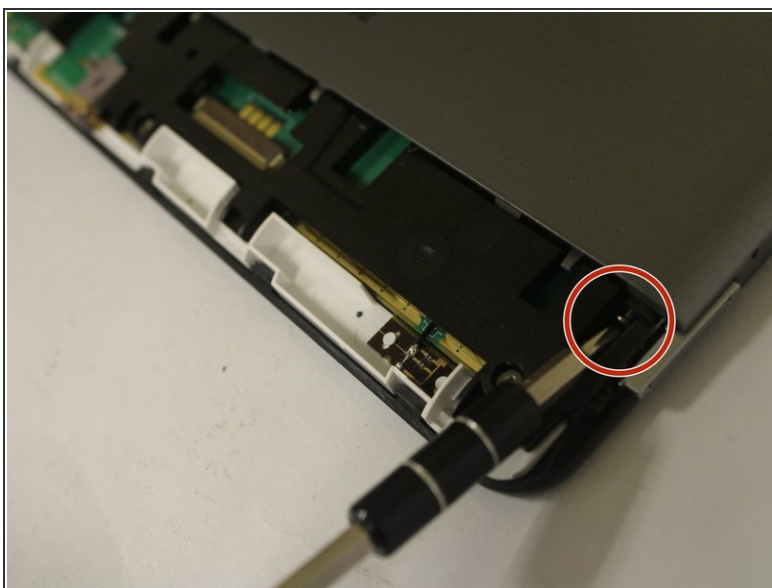
- Once enough pressure is applied the small piece will pop open.

### Step 3



- Remove the plastic piece.

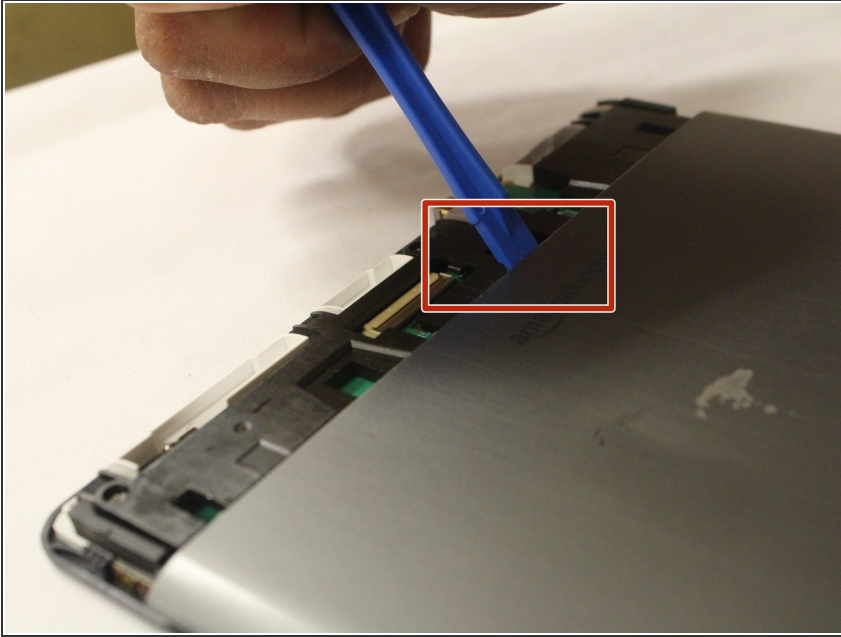
### Step 4



- Once the small plastic piece is removed you will need to locate two 40mm screws on both corners of the remaining casing. Use the PH000 Philips Head Screwdriver from the tool kit to remove both screws.

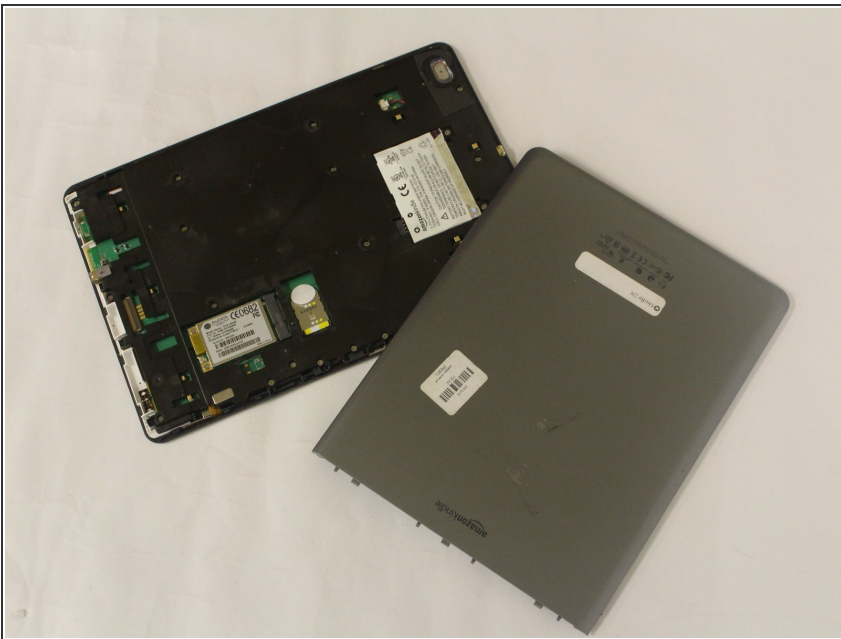


## Step 5



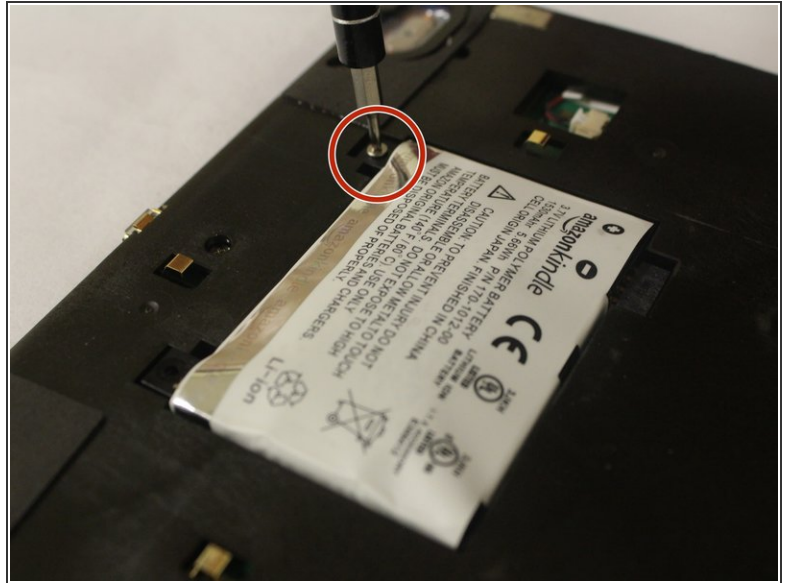
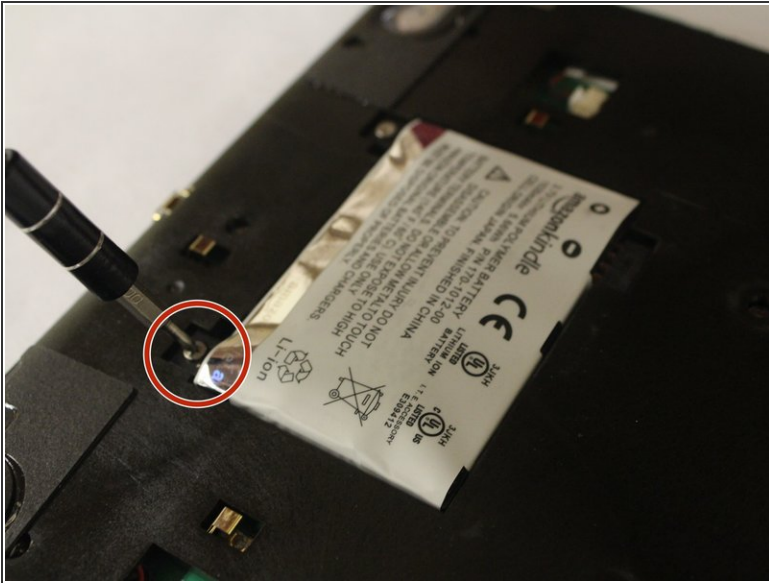
- Use the opening tool again to take the off the bigger metal piece.

## Step 6



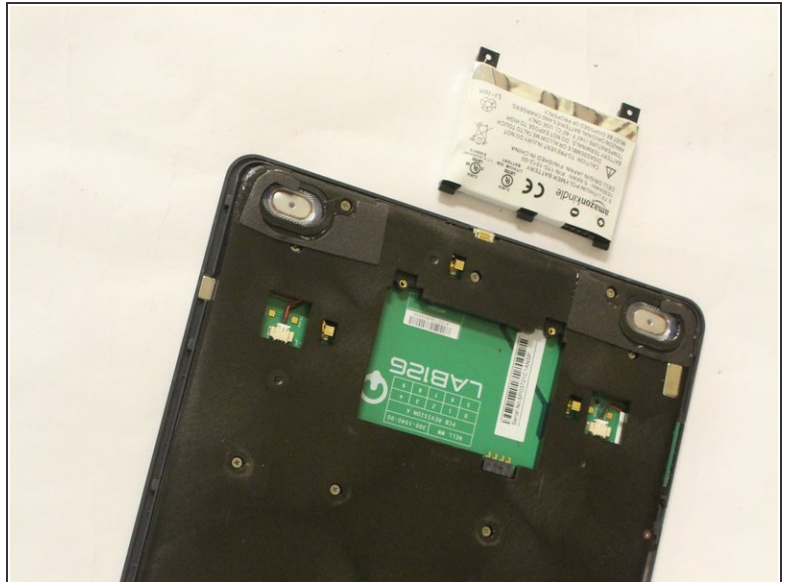
- Once the piece removed, locate the battery.

## Step 7



- Locate the two 30mm screws securing the battery on the bottom of the Kindle DX. Use the PH00 Philips head screw driver from the tool kit to remove both screws.

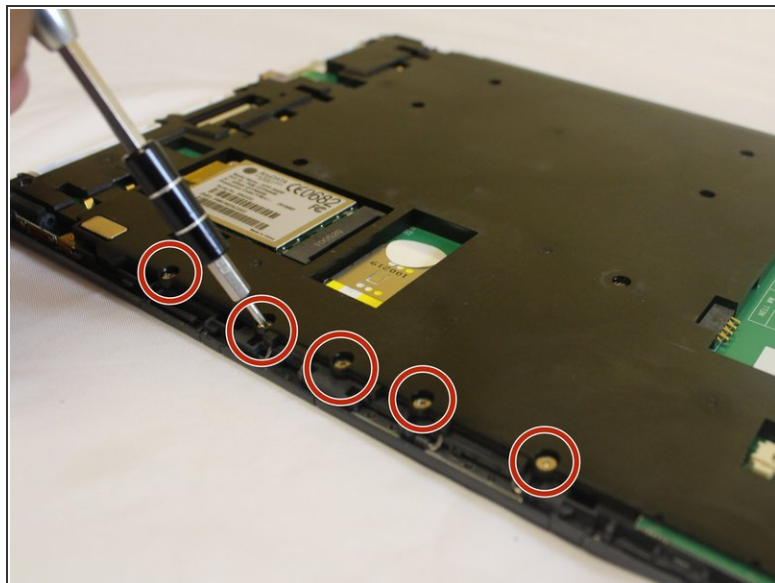
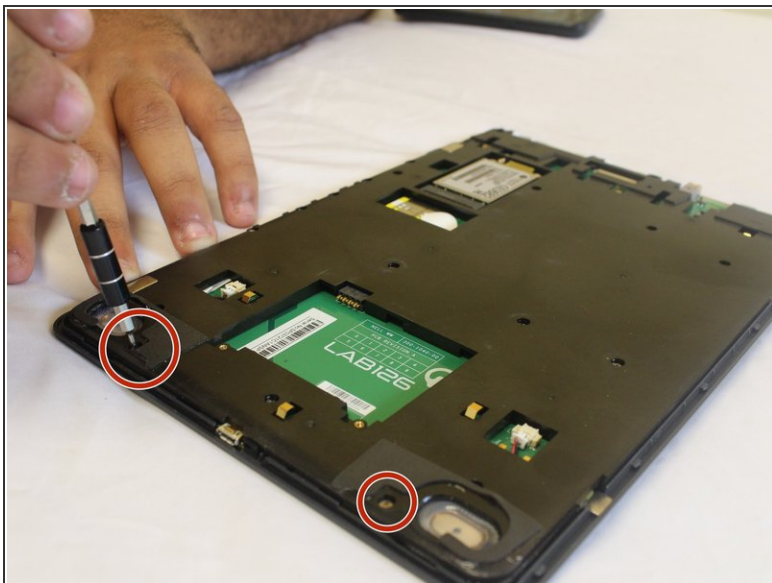
## Step 8



- Take the battery off once the screws have been removed.

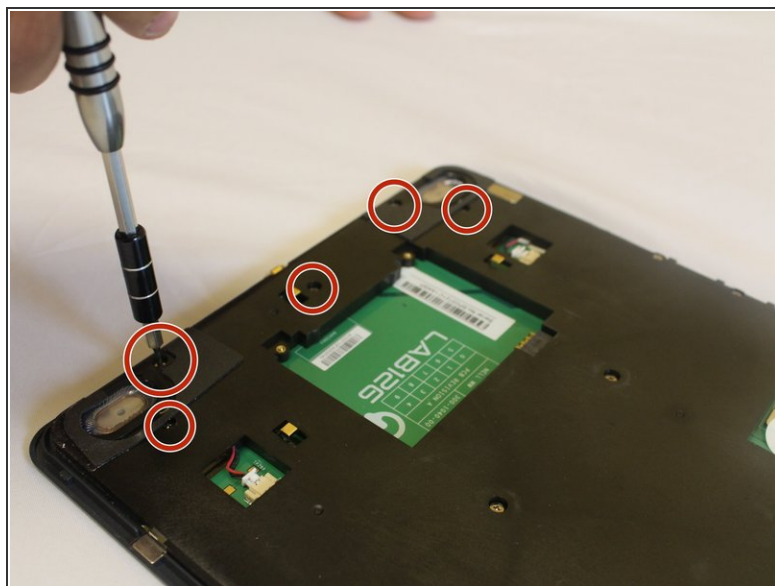
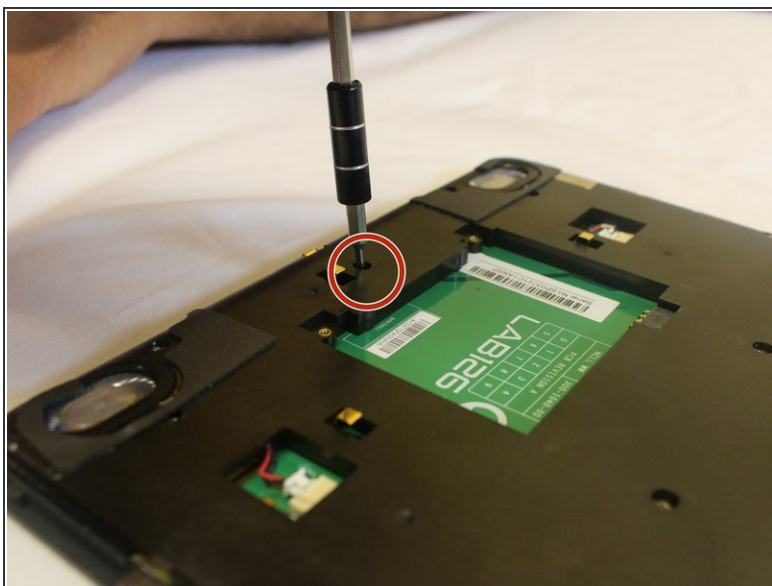


## Step 9



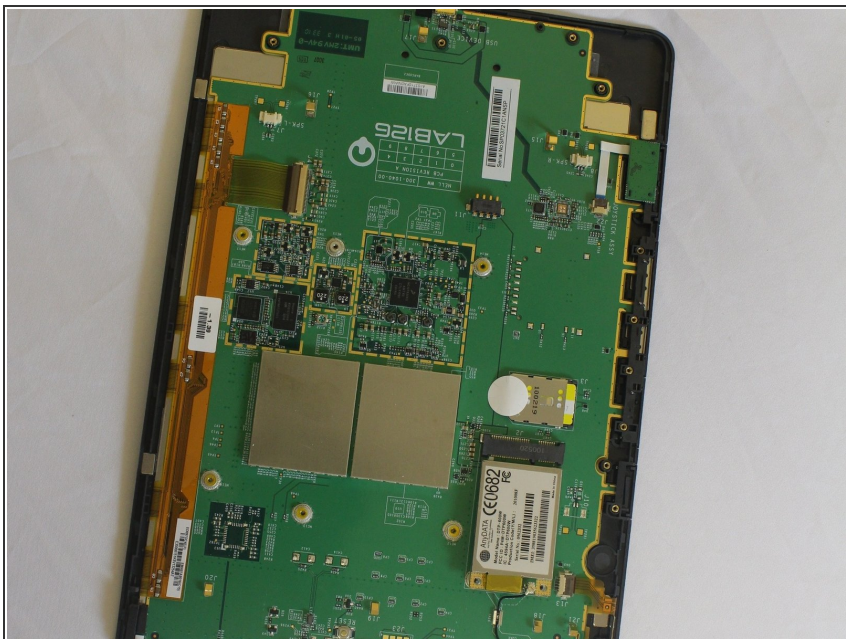
- Unscrew the 30 mm screws using a Phillips #000 screwdriver as shown in the picture.

## Step 10



- Unscrew the 30 mm screws using a Phillips #000 screwdriver as demonstrated in the picture.

## Step 11



- Remove the black case to reveal the mother board.

## Step 12



- Remove the motherboard from the display assembly.

To reassemble your device, follow these instructions in reverse order.