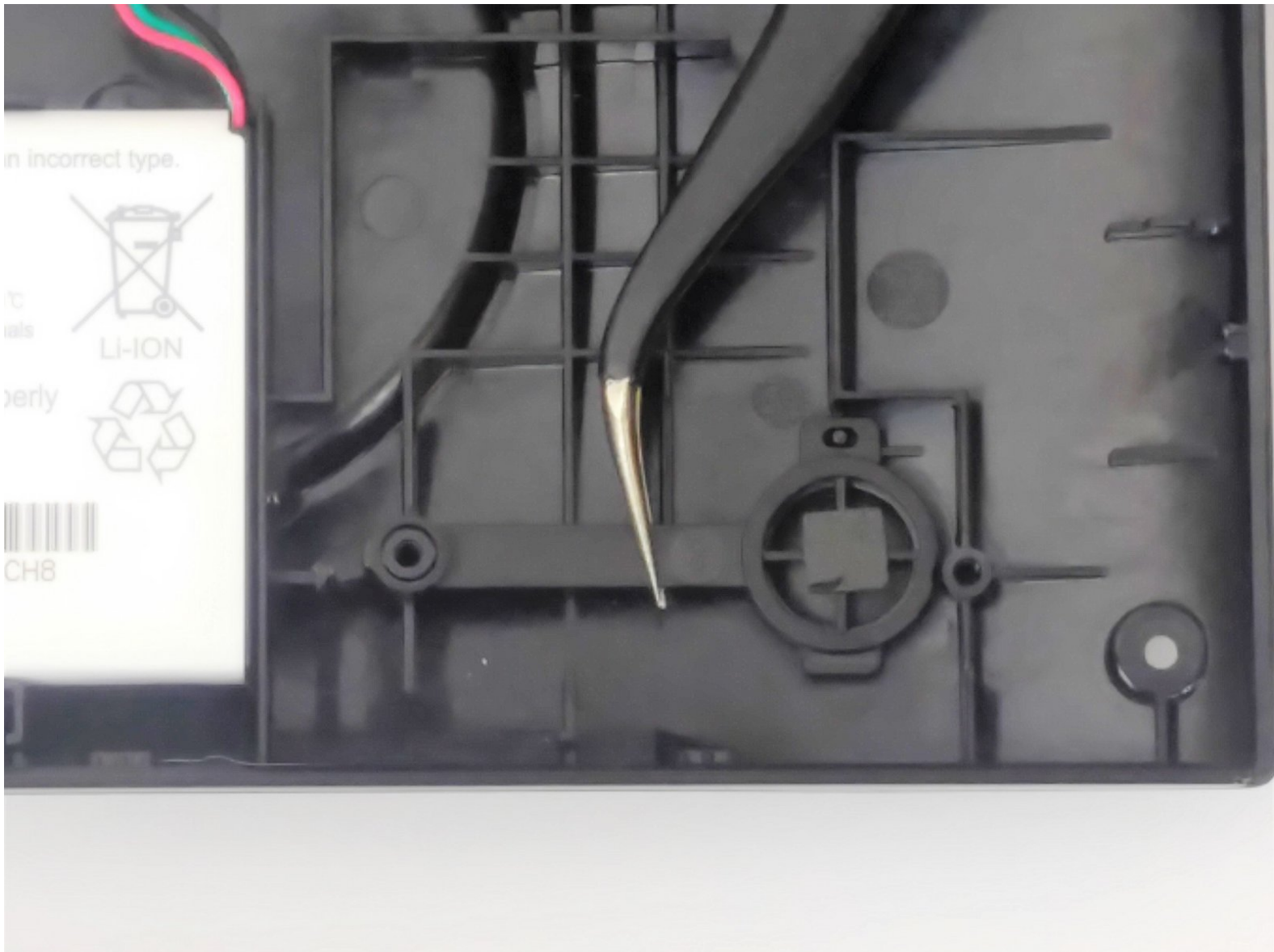




Garmin Nuvi 2589LMT Power Button Replacement

A simple guide to replace your Garmin Nuvi 2589LMT power button.

Written By: Adam Ferraro



INTRODUCTION

If your power button is not responding, use this guide to replace a defective power button on your Garmin NUVI 2589LMT device. Replacing the power button should fix any response issues you are experiencing with the button, but if it does not you may be experiencing a motherboard issue.



TOOLS:

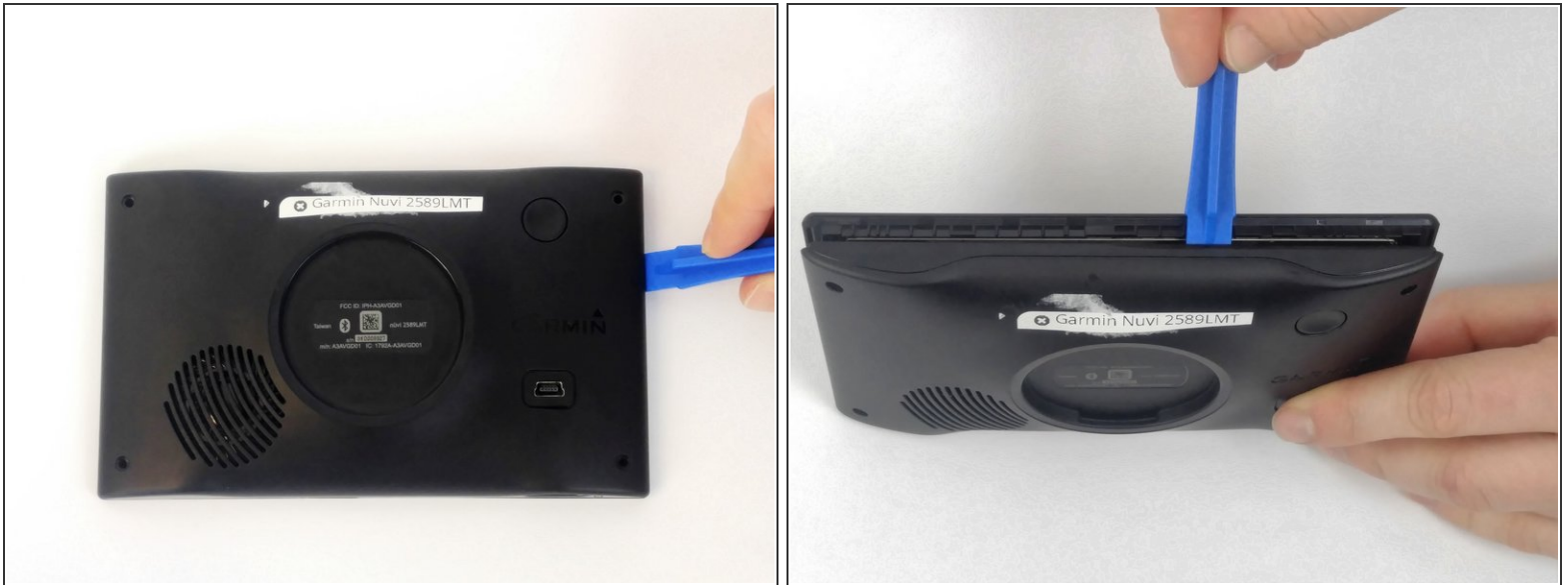
- [iFixit Opening Tools](#) (1)
 - [Tweezers](#) (1)
 - [T5 Torx Screwdriver](#) (1)
-

Step 1 — Back Panel Assembly



- Using the T5 Torx Screwdriver, remove all 4 of the 5.7mm screws from the back of the device.

Step 2



- Using the plastic opening tools, pry the shorter sides of the device apart.
 - Once a gap has formed at the top of the device, insert the opening tool into the gap and slide it along the top of the device. Repeat for the bottom edge of the device to separate the LCD screen from the back.
- ⚠ Do not disconnect or tear the ribbon wiring, located at the bottom of the motherboard, when removing the back of the device.

Step 3 — Power Button



- Using the angled tweezers, grip the red, black, and green wires connecting the battery to the motherboard, then gently lift away from the motherboard.

Step 4



- Using the angled tweezers, grab the microphone wires and gently pull to remove the microphone from the device.

Step 5



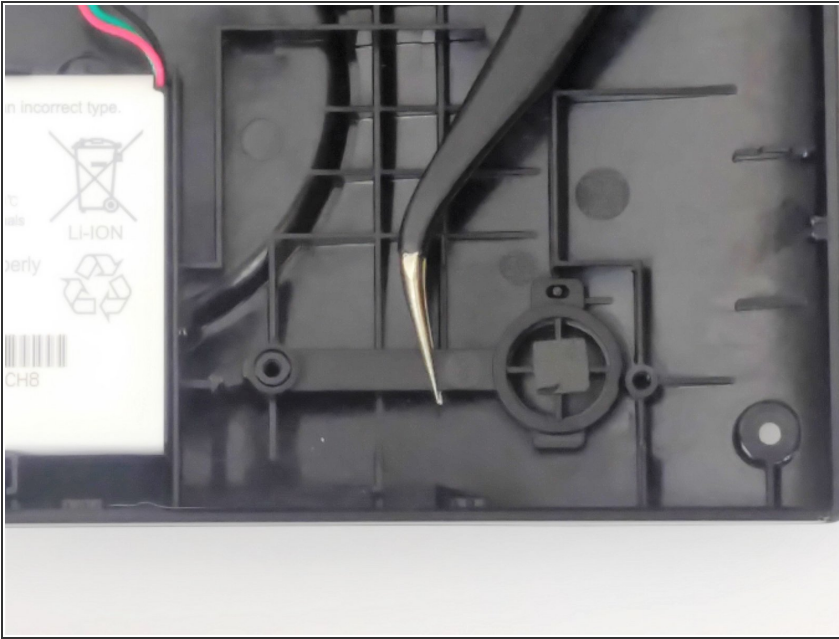
- Using the T5 Torx Screwdriver, remove all 4 of the 4.0 mm screws from the motherboard.

Step 6



- Using the plastic opening tools gently pry the motherboard away from the case.
- ❗ There is no need to desolder any connections because the motherboard only needs to be moved out of the way enough to get to the button.

Step 7



- Using tweezers, lift the button out of its socket.

To reassemble your device, follow these instructions in reverse order.