



Dell Inspiron 1100 Keyboard Replacement

This guide will demonstrate how to replace the keyboard of the Dell Inspiron 1100.

Written By: Alexander Pacheco



INTRODUCTION

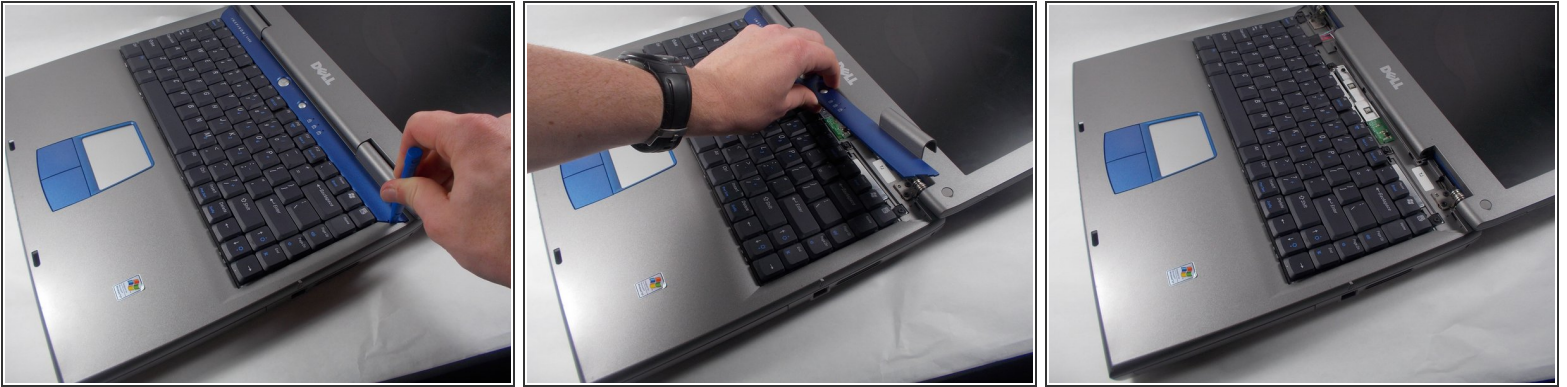
The keyboard is necessary for operating the Dell Inspiron 1100 and is used for various tasks such as typing or navigating the computer.



TOOLS:

- [Phillips #0 Screwdriver](#) (1)
 - [iFixit Opening Tools](#) (1)
-

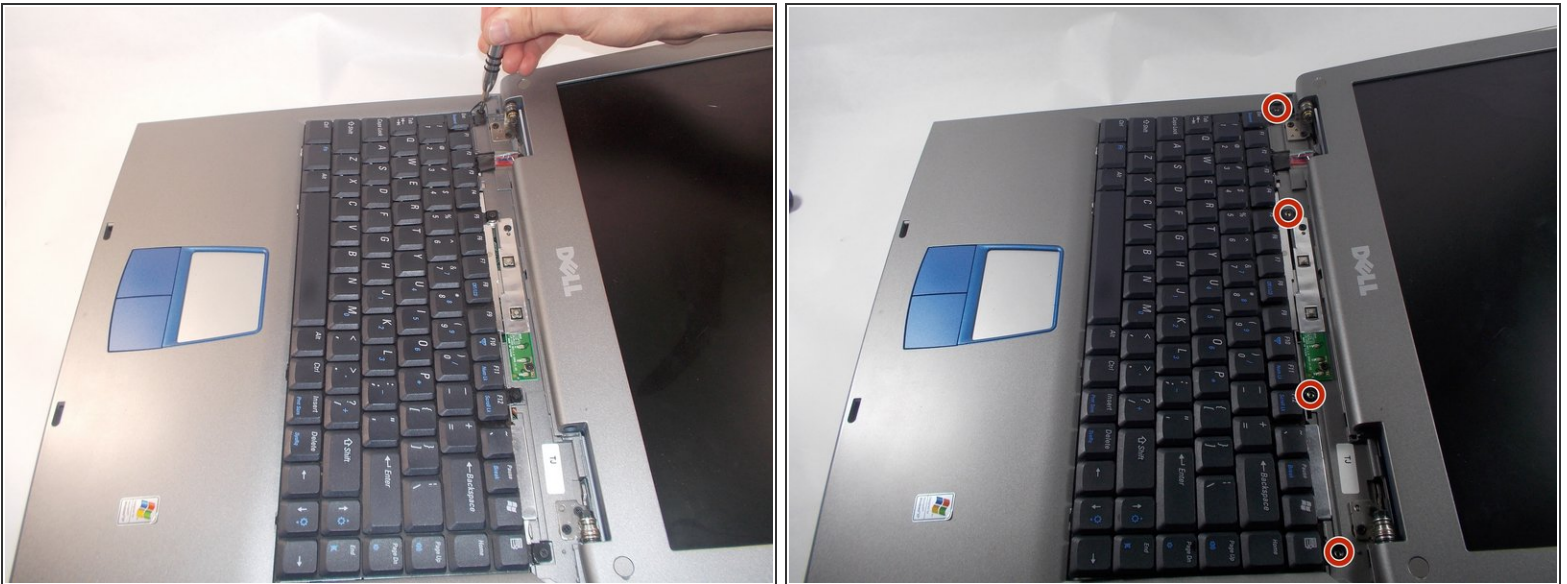
Step 1 — Keyboard



- Remove the plastic face plate from the laptop using the iFixit Plastic Opening Tool.
- Start by inserting the iFixit Plastic Opening Tool into the groove on the right side of the face plate.

⚠ This step does require some force. Be careful to not bend or break the plastic face plate.

Step 2




- Remove the four 3mm Phillips #0 screws securing the keyboard.

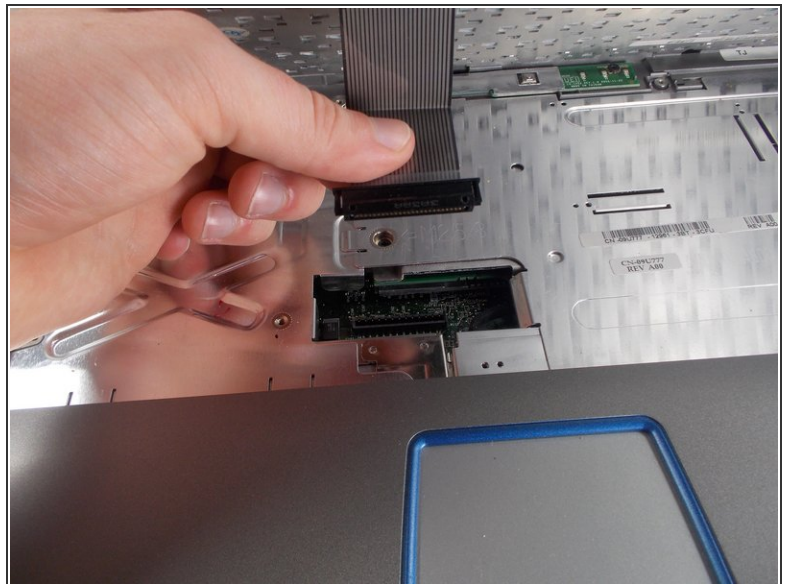
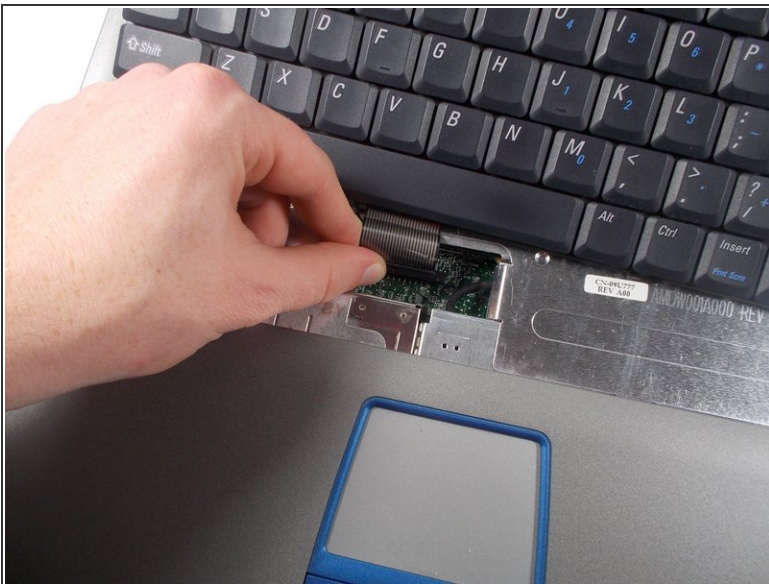
Step 3




- Lift up the keyboard to expose the ribbon header on the motherboard.

 Be careful as the keyboard can only move a little ways from the surface of the laptop and is easily damaged.

Step 4



- Grip the ribbon on its hard plastic connector, and pull the ribbon and its connector out of the motherboard header.

 Do not pull on the ribbon itself, as this may cause internal damage to the connector.

To reassemble your device, follow these instructions in reverse order.