



# Fujitsu Lifebook A6110 RAM Replacement

The Fujitsu Lifebook Model a6110 RAM is what's...

Written By: Cody Moniz



# INTRODUCTION

The Fujitsu Lifebook Model a6110 RAM is what's going to determine your laptop's speed. Once it begins to slow down or crash without warning, this signals that you will need to remove and replace your random access memory (RAM). Whether you are replacing or upgrading your system's memory, this easy-to-use guide demonstrates the process in six steps. Due to the electrical components, here's a [link](#) for tips and demonstrations on how to protect yourself prior to starting our steps in the guide.

---

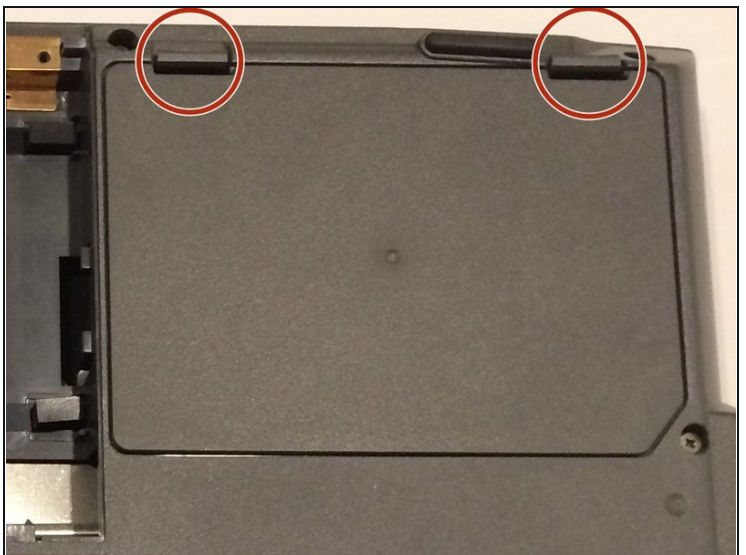
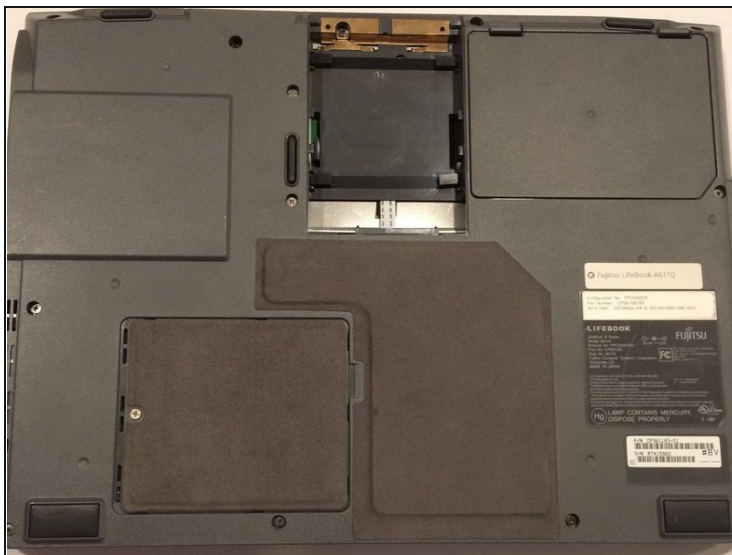
## TOOLS:



Phillips #1 Screwdriver (1)

Heavy-Duty Spudger (1)

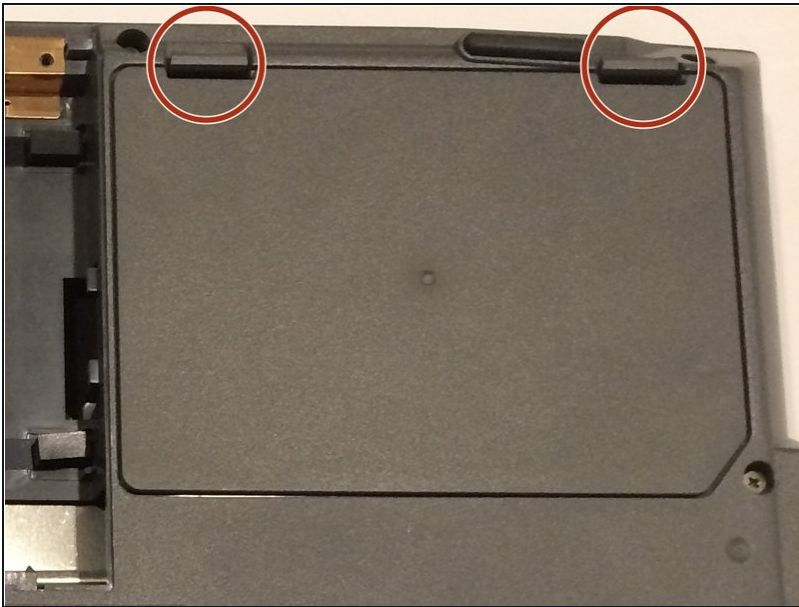
---

## Step 1 — Battery



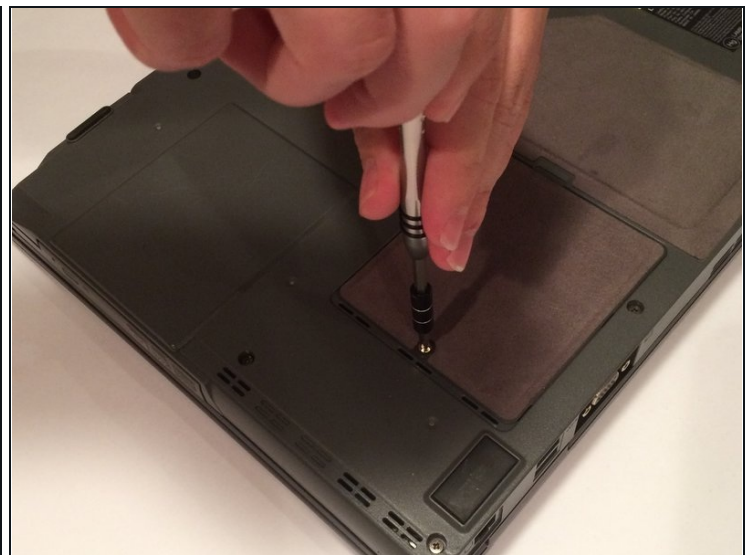
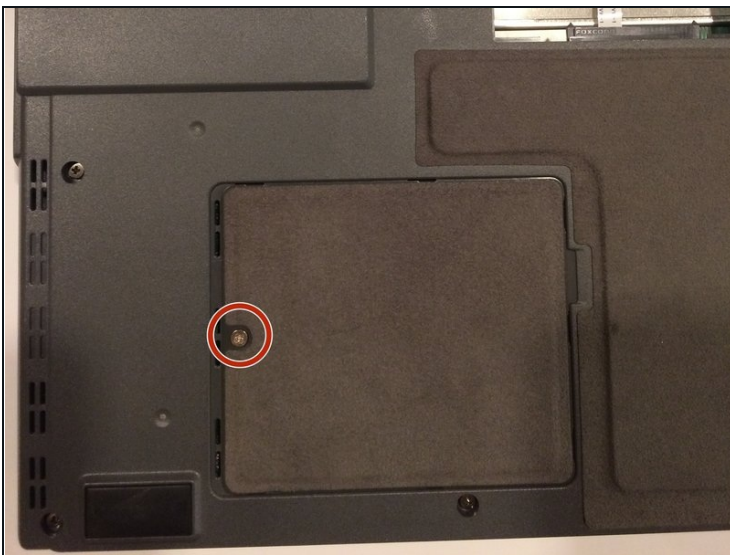
-  The computer should be fully turned off and disconnected from the power source.
-  Before handling electronic components, you should ground yourself. This will prevent damage to the components from a static charge. You can do this by touching any metal object.
- Flip your laptop so that the bottom of the laptop is facing up and the hinges of the screen are closest to you.

## Step 2



- To remove the battery, place your fingers underneath the two clips and simultaneously lift them up while pulling the cover towards you.

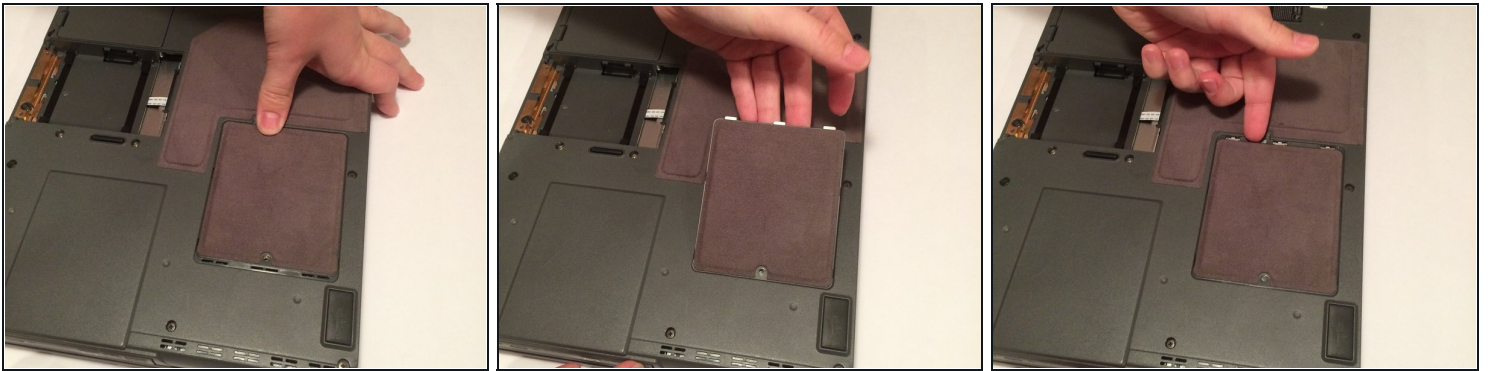
## Step 3 — RAM



- The RAM compartment will be located near the bottom-left corner of your lifebook. The compartment is behind the cover held in place by a 6 mm screw.
- Using a Phillips #1 screwdriver, remove the 6 mm screw from the RAM compartment on the bottom-left corner of the rear cover.

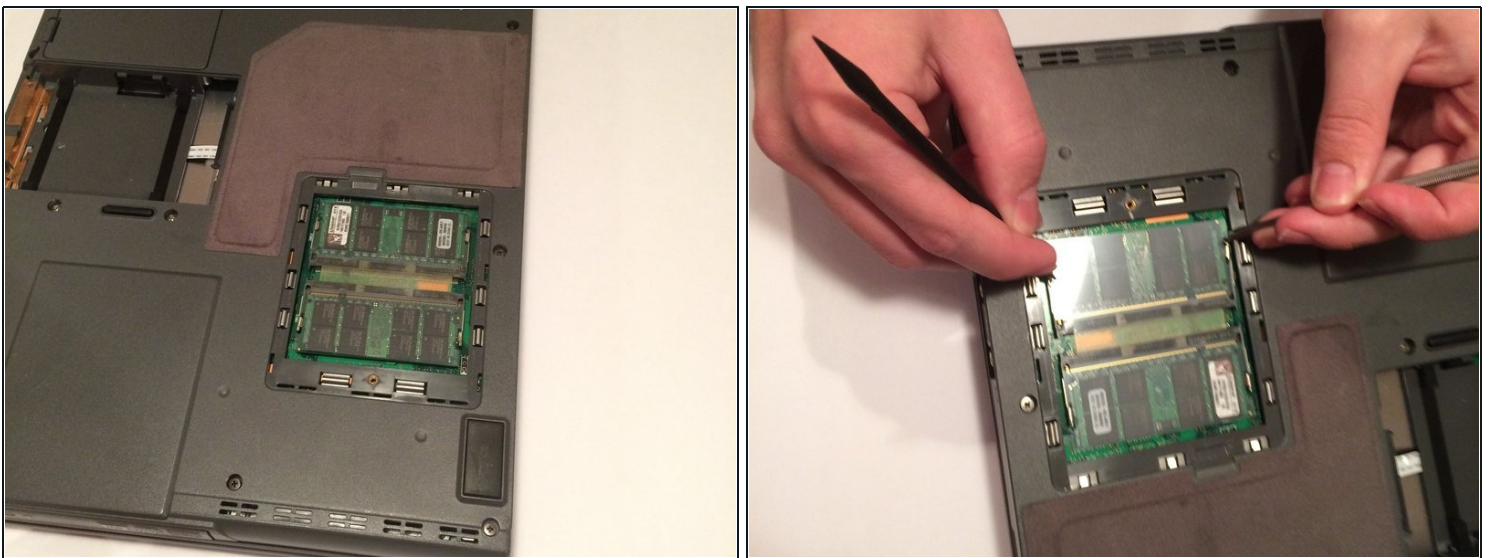


## Step 4



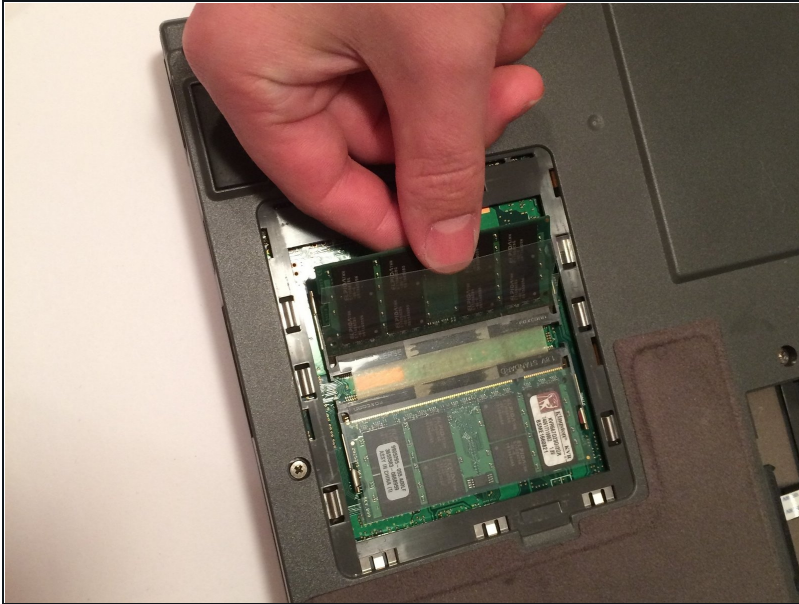
- Slide the cover towards the screw, and then lift the cover upwards.

## Step 5



- ① There are two RAM cards in this compartment. They look like small green plastic chips with black squares on each of them. These cards are beneath a thin plastic sheet that must be pulled out of the way.
- Simultaneously pull each metal and plastic clip away from the center of the RAM stick.
- ① If done correctly, the RAM card will eject at a 45 degree angle.

## Step 6



- Pull the RAM card out while maintaining the 45 degree angle it ejected at.
- ★ When reassembling, the gold pins on the RAM card must match the corresponding pins found on the motherboard.
- i If you choose to replace the other RAM card, repeat the process in Step 5.

---

To reassemble your device, follow these instructions in reverse order.