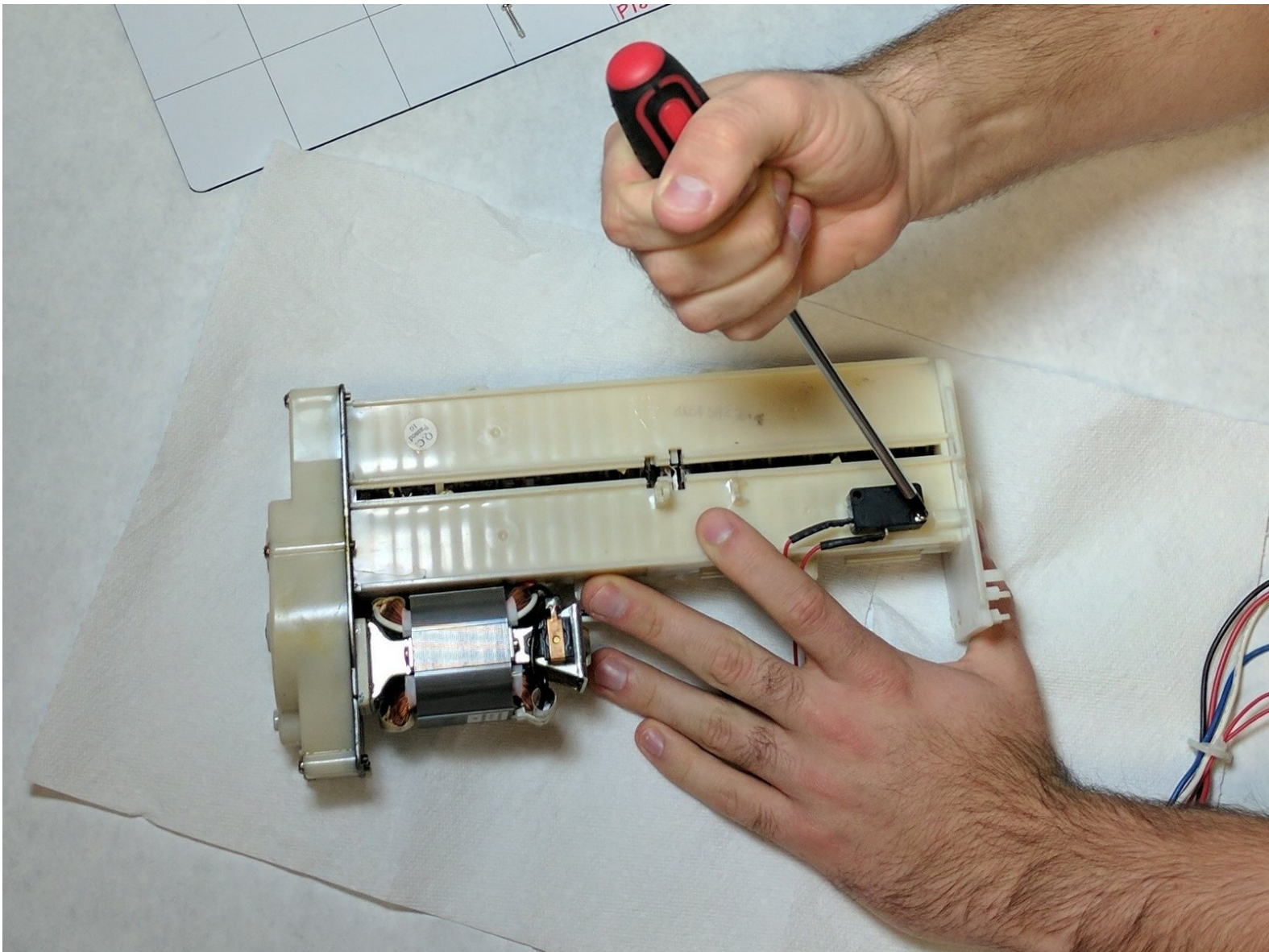




Fellowes T7CM Trigger Sensor Replacement

This guide will show how to remove the trigger sensor in the Fellowes TC7M paper shredder.

Written By: Michael Aldrich



INTRODUCTION

This guide will show how to remove the trigger sensor in the Fellowes TC7M paper shredder.



TOOLS:

- [Phillips #000 Screwdriver](#) (1)
- [Wire Stripping/Crimping Tool](#) (1)



PARTS:

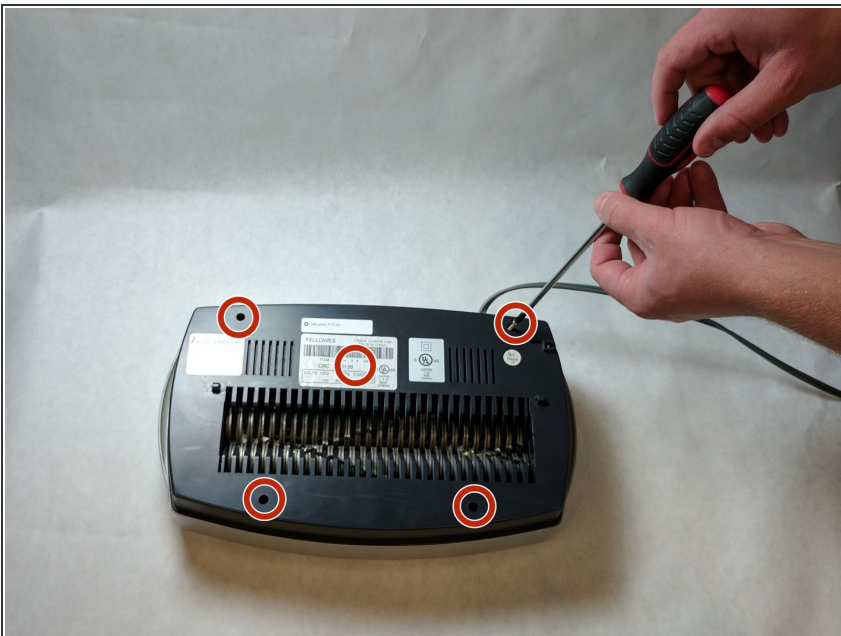
- [Feeding Sensor](#) (1)

Step 1 — Fellowes T7CM Casing and Trigger Replacement



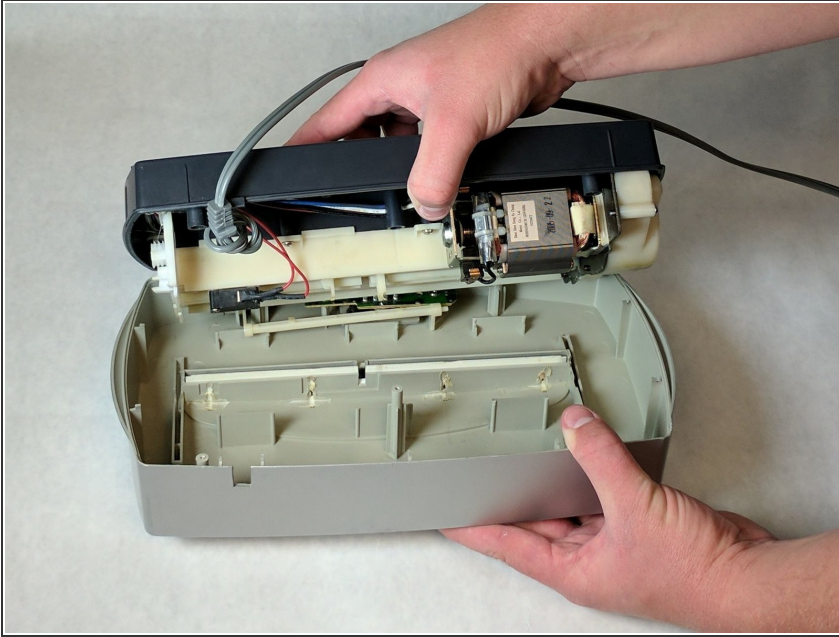
- Check to make sure the shredder is not plugged in to any electrical outlet.
- Remove the shredder from the catch basket and place the silver side down on a flat surface.
- Place the catch basket aside as you will not be needing it for the rest of the disassembly.

Step 2



- Flip the shredder silver side down and place on a flat even surface.
- Remove the manufacturer's label in order to gain access to the hidden screw hole.
- Locate all five of the case screws and remove them with a Phillips-Head screwdriver. The screws are located within the five marked circles in the photo. The size of the screws are 18 mm in length and head diameter of 5 mm.

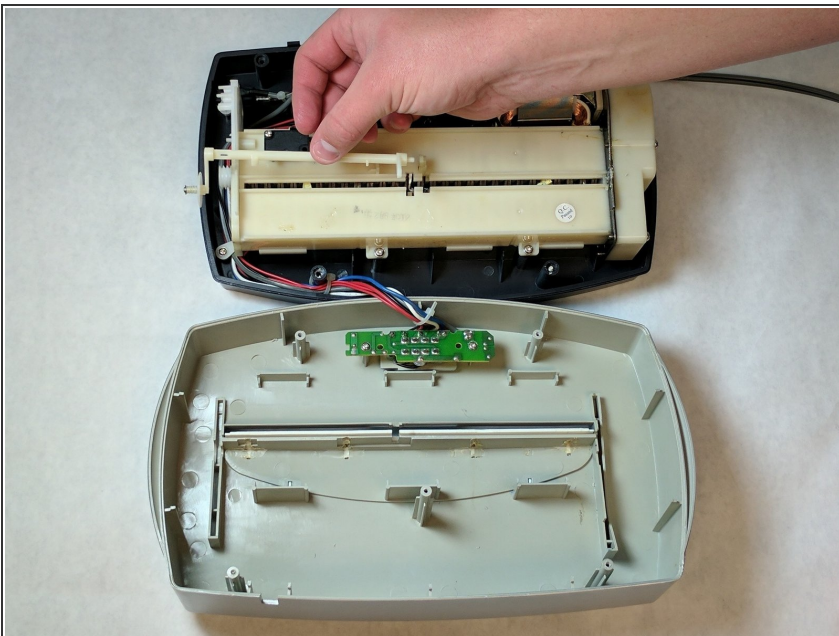
Step 3



- Once all of the screws are removed, slowly pull apart the casing.
- If the casing is not separating, gently wiggle the top part of the casing from the bottom part of the casing.

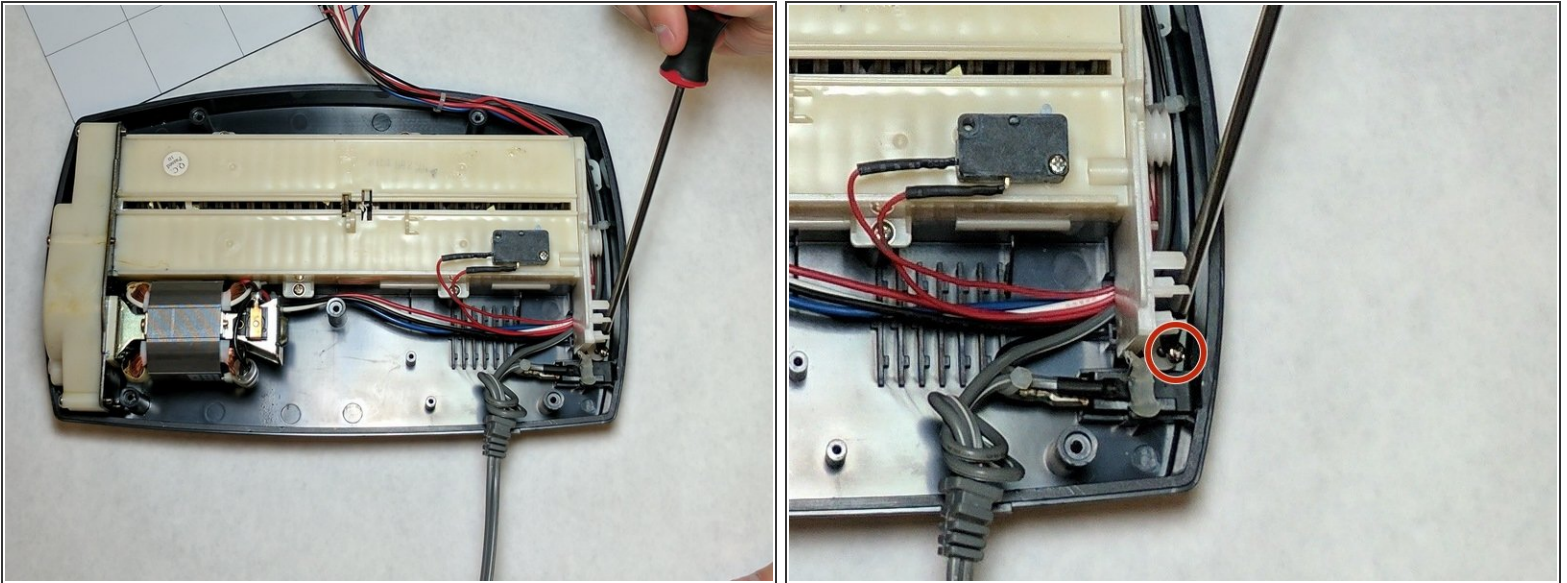
⚠ Use Caution during this procedure to prevent from damaging any of the internal parts.

Step 4



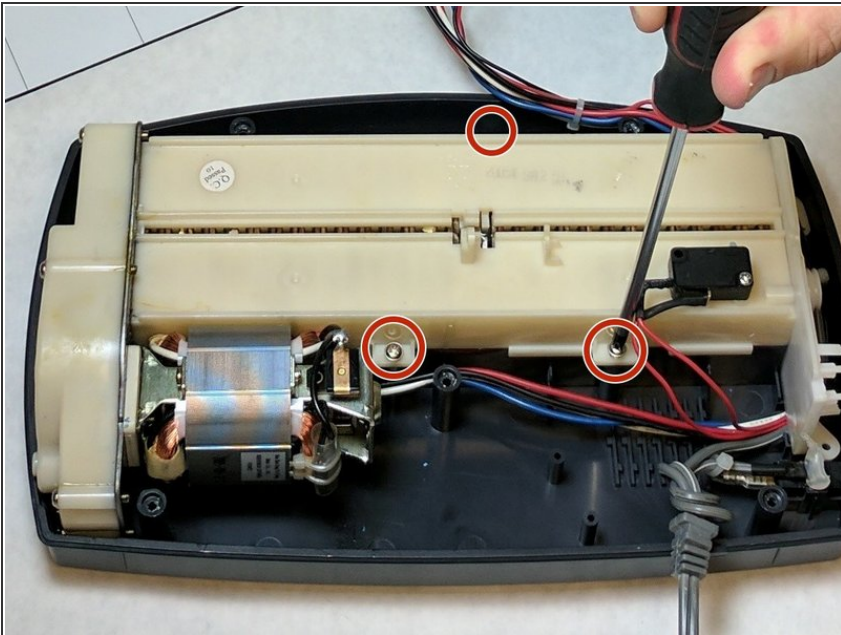
- Open the casing as shown to prevent tangling or damaging the wires.
- Take note to how the trigger assembly is attached before removal.
- The trigger assembly is one part and should come off all together with little to no force applied.
- Remove the trigger assembly.

Step 5 — Main Power Cord



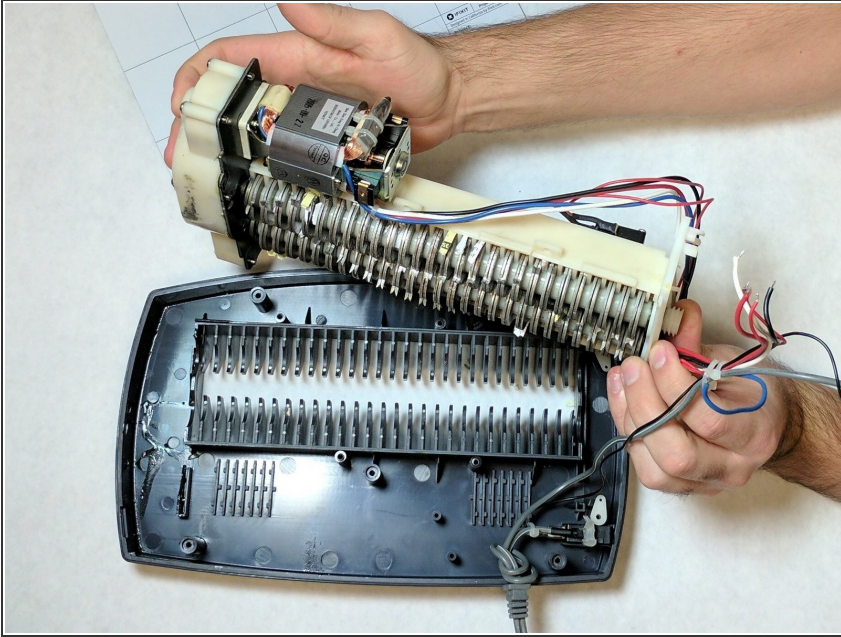
- Remove the wire holder. This is a small screwed in piece of plastic which holds the wires in place. The screw length is 10 mm and the head diameter is 6 mm.

Step 6



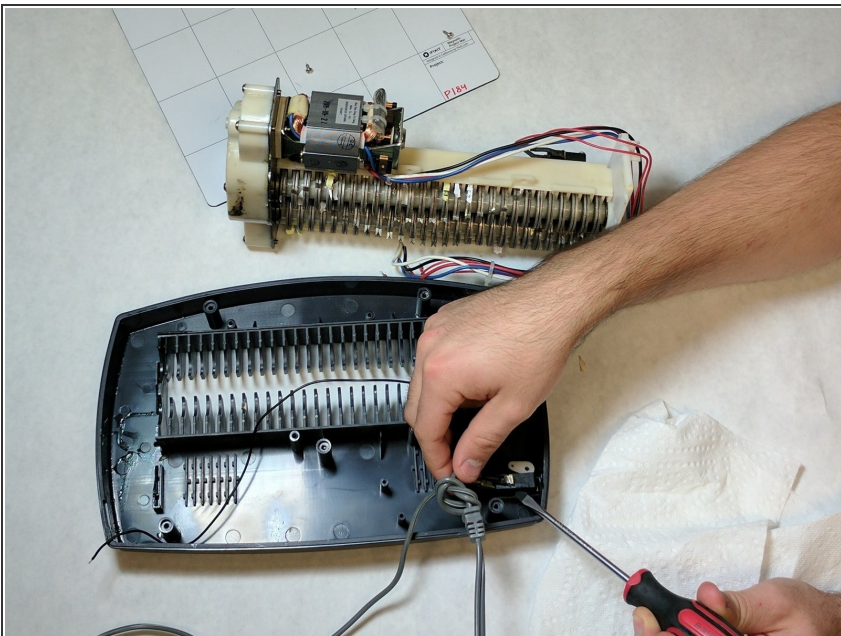
- Remove the blade housing from the external case.
- Remove the three screws from the blade housing. The screw length is 18 mm and the head diameter is 5 mm

Step 7



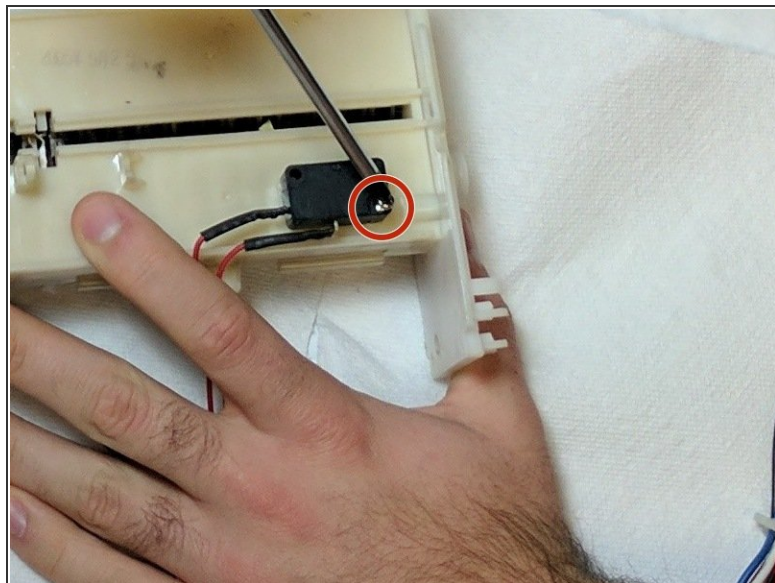
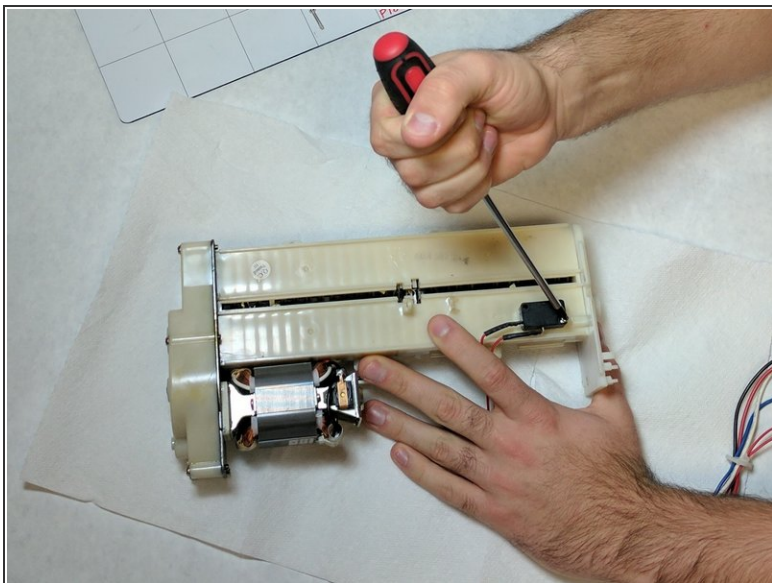
- Use Caution when lifting the blade housing from the casing.
- **Warning:** Sharp Objects are now exposed.
- Place the blade housing close to the case to ensure no damage occurs to the connected wires and that they remained attached to the casing.

Step 8



- Locate the main power cord.
- Clip the wire and strip the remaining end of the wire. Twist the new cord together with the remaining old wire.
- Use electrical tape in order to cover the wire splice.

Step 9 — Trigger Sensor



- Remove the screws holding the feeding sensor in place. The screw length is 10 mm and the head diameter is 6 mm.
- Lift and remove the sensor.
- Replace the faulty sensor with a new sensor.

To reassemble your device, follow these instructions in reverse order.