



# IBM ThinkPad 600E Keyboard Replacement

This guide will show you how to replace your...

Written By: Kevin Nguyen



# INTRODUCTION

This guide will show you how to replace your keyboard. Sometimes the keys get broken or worn out, or the track point gets damaged, thus needing it to be replaced.

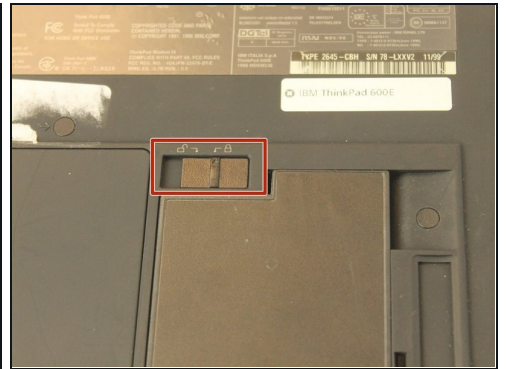
## TOOLS:

[Anti-Static Wrist Strap](#) (1)

[Metal Spudger Set](#) (1)

[Phillips #00 Screwdriver](#) (1)

## Step 1 — Battery



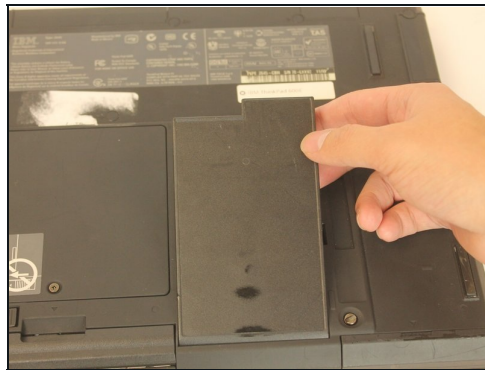
- Flip the laptop over and find the battery latch.

## Step 2



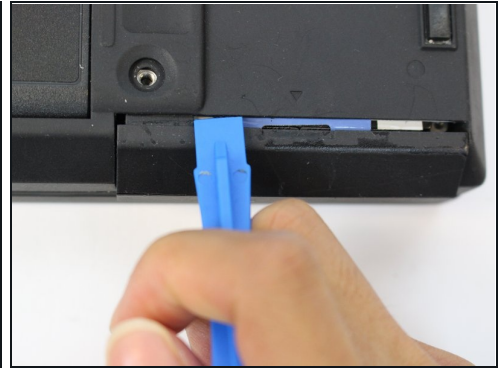
- Move the latch to the side with the unlocked symbol.

## Step 3



- Pry the battery out using your fingers.

## Step 4 — Keyboard



⚠ Use an [antistatic wrist strap](#) to avoid the risk of electric shock.

- Unscrew the coin screw for the hard drive using a coin. Pry off the HDD cover.
- ① It is easier to remove the coin screw using a thicker coin, such as a nickel.

## Step 5



- Unlock the highlighted latch and pull the disk drive out.
- Remove the disk drive.



## Step 6



① Most of the screws have a small, plastic covering attached with an adhesive. Use the metal spudger to pry it off. Make sure to note which screw came from which hole.

- Four 18mm long M2.5 screws
- Two 16mm long M2.5 screws
- One 4.5mm long M2.5 screws
- Four 3mm long M2.5 screws

## Step 7



- Open the laptop all the way until it is flat.
- Take the black circle off and remove the screw.
- One 4.5mm long M2.5 screw

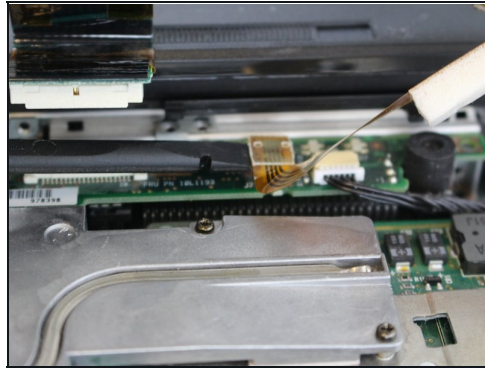
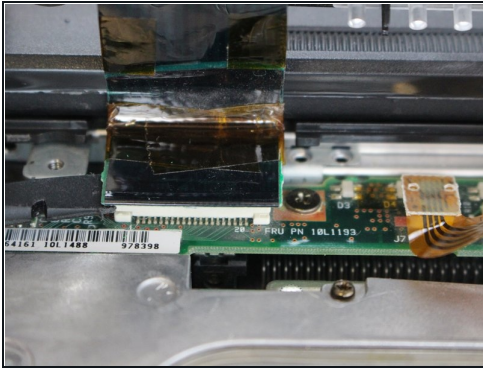
## Step 8



- Pry the keyboard case up from the bottom and gently pry it up from all other edges.

⚠ Use caution when opening the case, as there are two ribbon cables attached to the keyboard case.

## Step 9



- Pry the connectors of the ribbon cables off slowly, lifting straight up. Wiggle gently side to side if necessary.

---

To reassemble your device, follow these instructions in reverse order.