



Toshiba Satellite C55-C5268 Disk Drive Replacement

The disk drive holds and reads CDs. It can become jammed and when that happens its useless and needs to be replaced.

Written By: Ben Rounseville



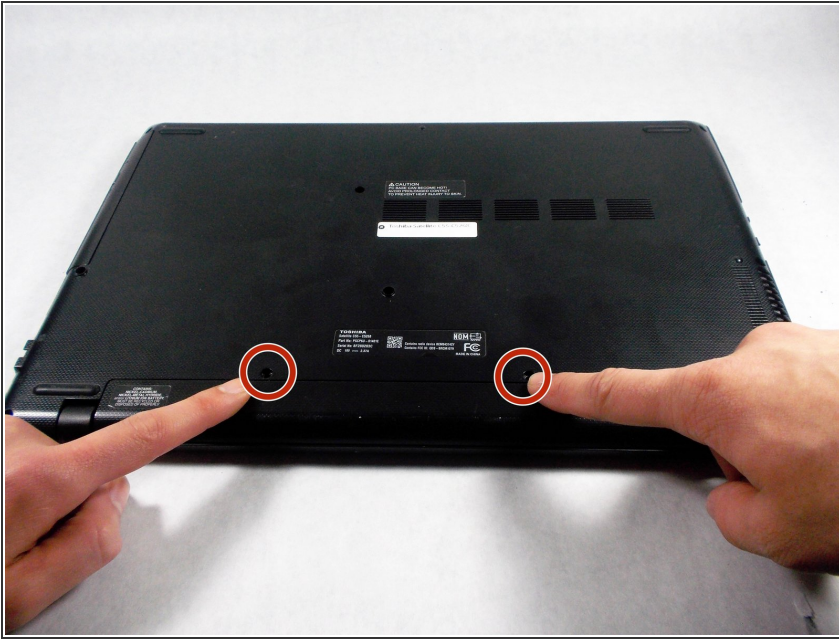
INTRODUCTION

This guide will show you how to correctly replace the Disk Drive.

TOOLS:

- [Spudger](#) (1)
 - [Phillips #1 Screwdriver](#) (1)
-

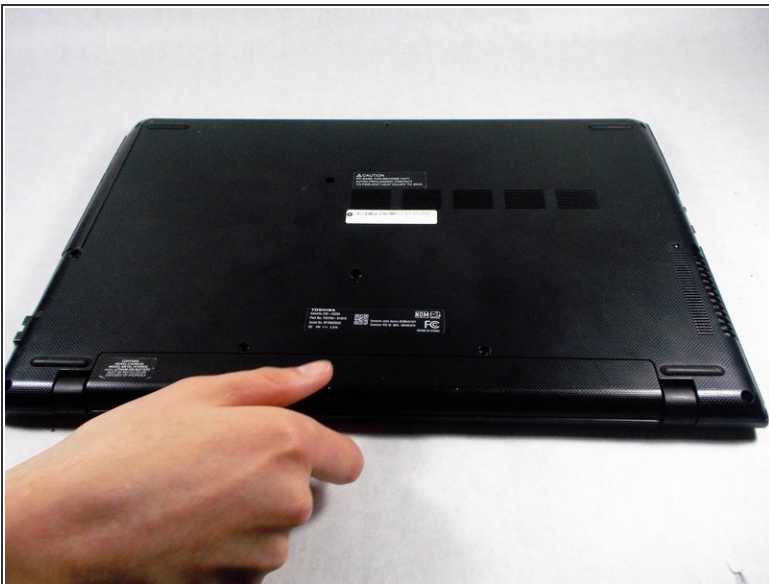
Step 1 — Battery



i Unplug and power off the laptop.

- Unscrew the two 9 mm Phillips #1 screws holding the battery in place.

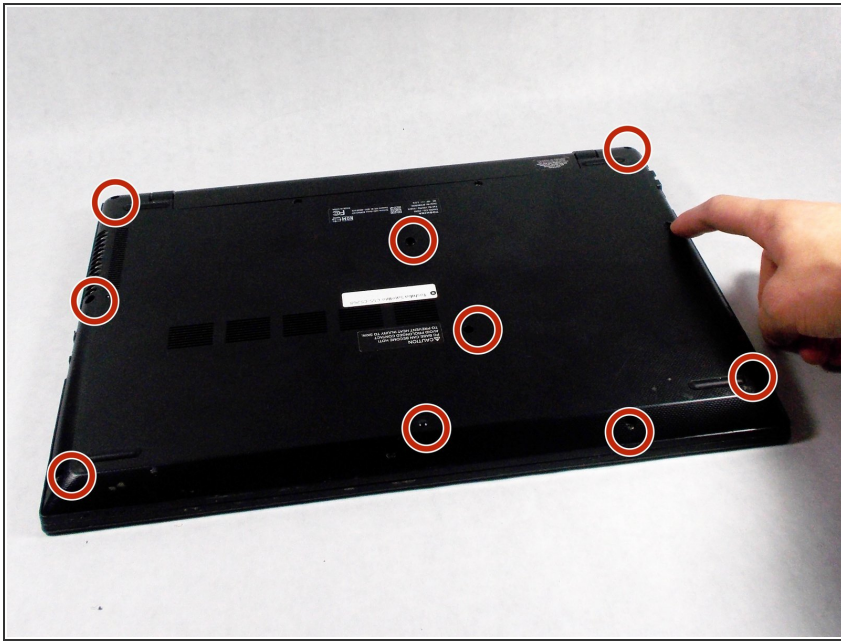
Step 2



- Grab the battery and pull it away from the laptop to remove it.

i This doesn't require a lot of effort, so you don't have to pull too hard.


Step 3 — Back Panel



- Unscrew the 10 9.0 mm screws holding the back panel on using a Phillips head #1 screwdriver.

Step 4



 Using a metal spudger can damage sensitive components.

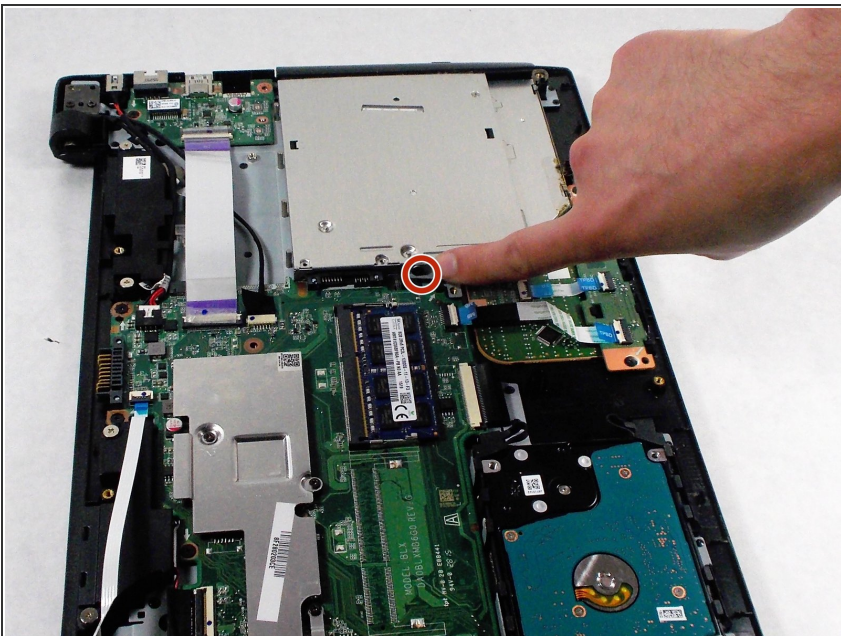
- Insert a metal spudger tool in the seam between the back cover and the laptop itself. Gently run the spudger around the edge to pop the cover off.

Step 5



- Pry up the back panel from the rest of the laptop using a spudger.
- ⓘ It is best to start around the USB port and work your way around the edge until the panel completely snaps off.

Step 6 — Disk Drive



- Unscrew one 3.0 mm screw from the disk drive using a #1 Phillips screwdriver.

Step 7



- Grab the disk drive with one hand and the laptop with another, then gently pull the disk drive straight toward yourself.
- ⓘ Pull it in a straight line horizontally until it is completely removed.
- ⓘ This does not require much force, so be gentle.

To reassemble your device, follow these instructions in reverse order.