



Dell Inspiron 1525 CPU Replacement

Replace the CPU in a Dell Inspiron 1525.

Written By: Miroslav Djuric



INTRODUCTION

Use this guide to replace the CPU in a Dell Inspiron 1525.



TOOLS:

- [Phillips #1 Screwdriver](#) (1)
 - [Flathead 3/32" or 2.5 mm Screwdriver](#) (1)
-

Step 1 — Battery



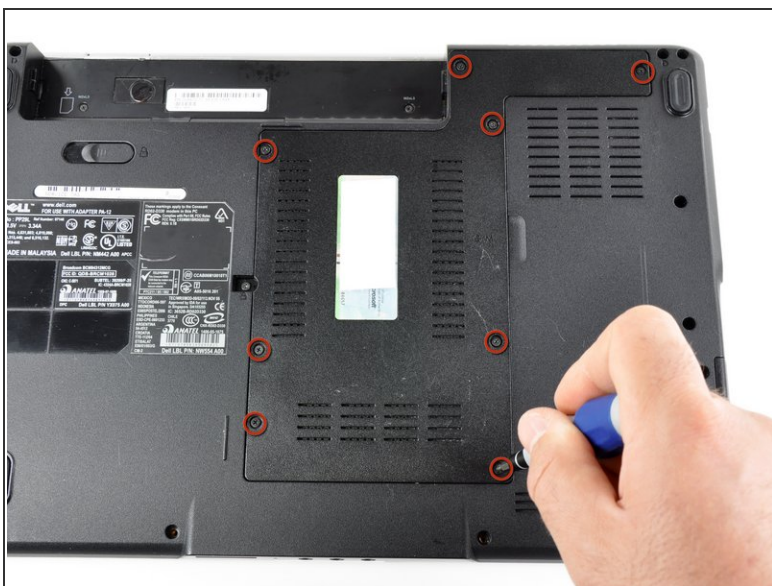
- Locate the battery release switch on the bottom of the laptop.

Step 2



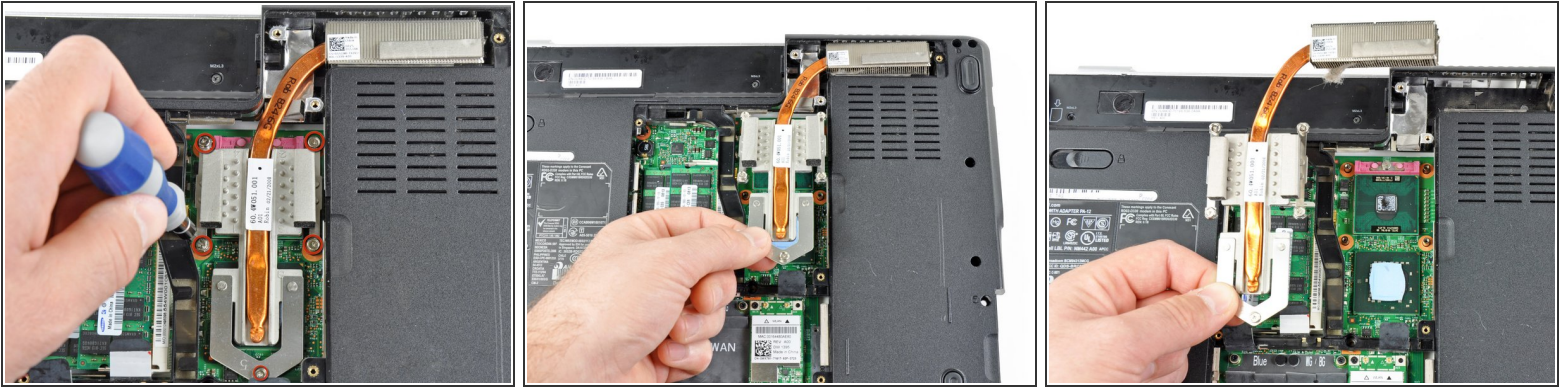
- Slide the battery release switch away from the lock symbol until you hear the battery click.
- Slide the battery towards the back of the laptop until it comes free.

Step 3 — Bottom Cover



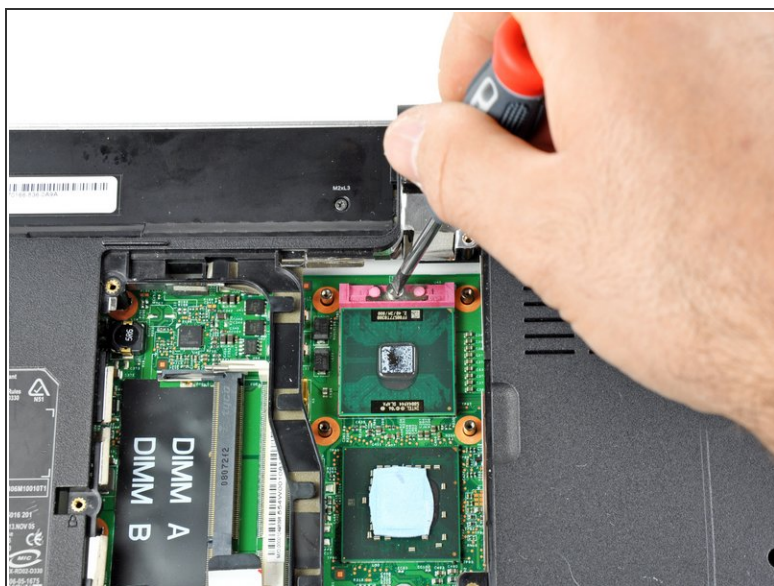
- Remove/loosen the eight 4.80 mm Phillips #1 screws securing the bottom panel.
 - The screws may only need to be loosened, as they are generally retained by plastic washers.
- Remove the bottom panel.

Step 4 — Heat Sink



- Loosen the five #1 Phillips screws securing the heat sink and clean it with compressed air
 - ⓘ These screws are attached to the heat sink assembly.
- Gently lift the heat sink from side indicated in the picture.
 - ⓘ The heat sink may feel like it is glued to the chips because of the thermal paste. Gently wiggle the heat sink back and forth to help break it free.
- ⓘ Be sure to thoroughly clean off the old thermal paste and apply new thermal paste before reinstalling the heat sink. Follow our [thermal paste application guide](#) for detailed instructions.

Step 5 — CPU



- Use a small flathead screwdriver to turn the ZIF-socket cam screw counterclockwise until it can't be turned anymore.
- Lift the CPU out of its socket, being careful not to bend its pins.
 - ⓘ Processor orientation can be determined by matching the corner of the processor with a small triangle to the corner of the pink module with a small triangle.
- ✦ Don't forget to apply thermal paste to the new processor. Also clean and apply fresh thermal paste to the video processor. Follow our [thermal paste application guide](#) for detailed instructions.

To reassemble your device, follow these instructions in reverse order.