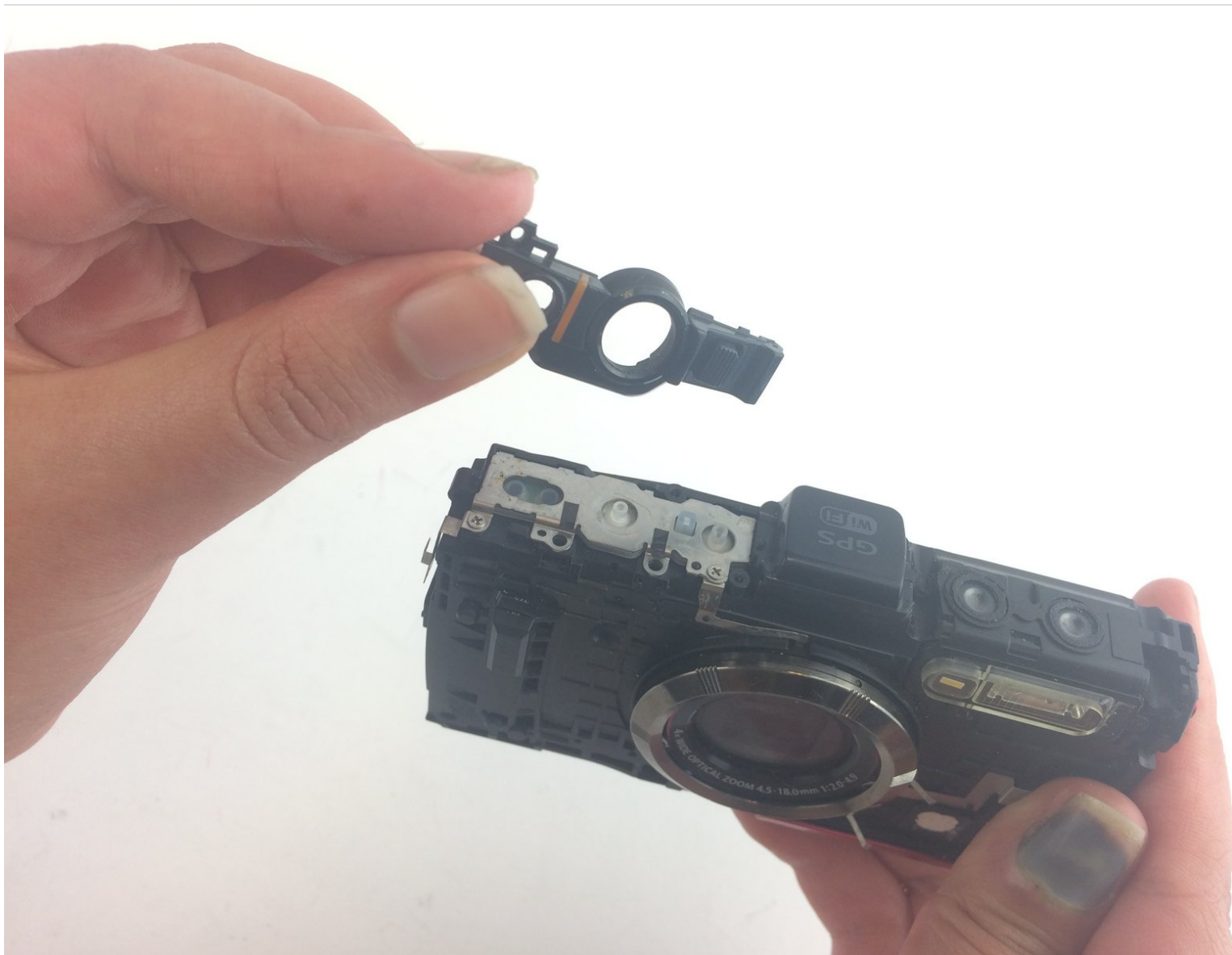




Olympus Digital Camera TG-3 Shutter + ON/OFF Buttons Replacement

This guide provides the instructions necessary for removing the shutter + ON/OFF black plastic button holder that contains these buttons. Once you remove the holder, the buttons and metal springs under them come off manually.

Written By: Natalia Morales



INTRODUCTION

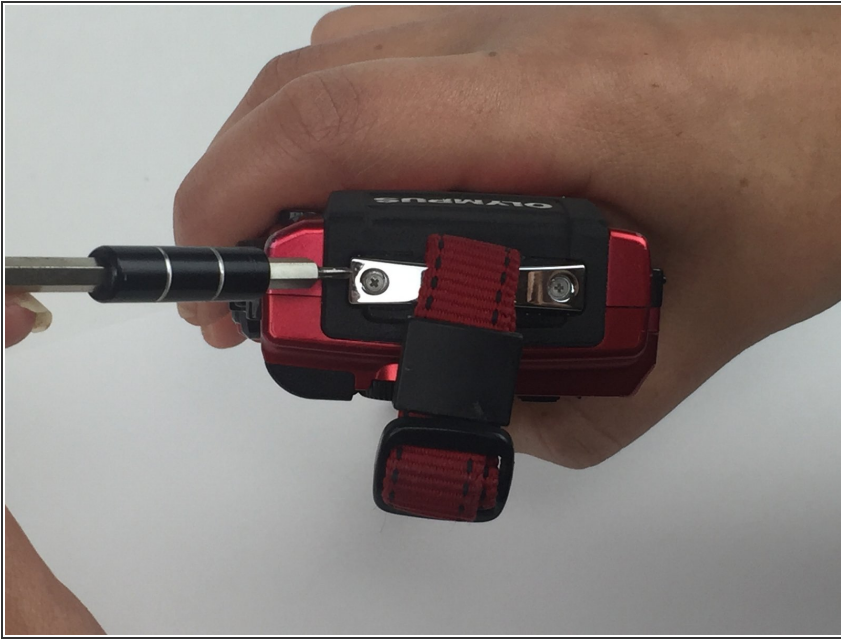
This guide requires you to handle sharp metal objects. Proceed with caution. To avoid misplacing the screws hold them in place with masking tape. Make sure your hands are clean and dry before they come in contact with the internal parts of the camera.



TOOLS:

- [Phillips #000 Screwdriver](#)—(if iPhone has external Phillips screws) (1)
 - [iFixit 6 Inch Metal Ruler](#) (1)
-

Step 1 — Front Case



- Locate the strap eyelet side of the camera and use the PH000 screwdriver to remove the two 5.3mm screws that hold the strap.

Step 2



- Locate the side of the camera containing the HDMI port. Use the PH000 screwdriver to remove the 5.4mm screw located on the lower left side below the port.

Step 3



- Using the PH000 screwdriver, remove the 3.8mm screw located inside the HDMI port.

Step 4



- Locate the bottom section of the camera. Using the PH000 screwdriver, remove the two 4mm screws located towards the middle (near the battery compartment).

Step 5



- Now you should be able to remove the front case easily using your hand.

Step 6 — Shutter + ON/OFF Buttons Plastic Holder



- Use the PH000 to remove the 7mm screw on the upper right corner of the device.

Step 7



- Use the PH000 screwdriver to remove the 5 mm screw located on the top left side of the device.

Step 8



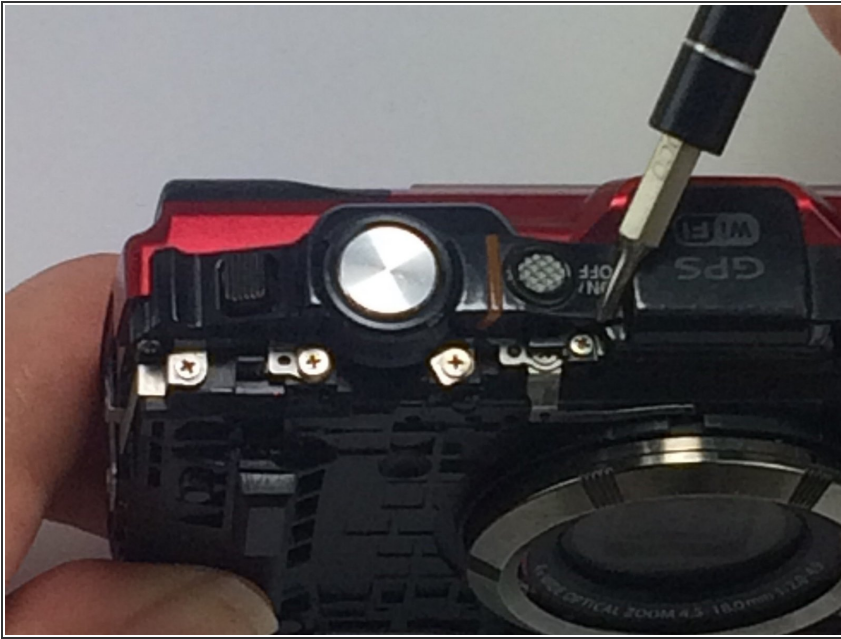
- Use the PH000 screwdriver to remove the 3mm screw shown on the picture.

Step 9



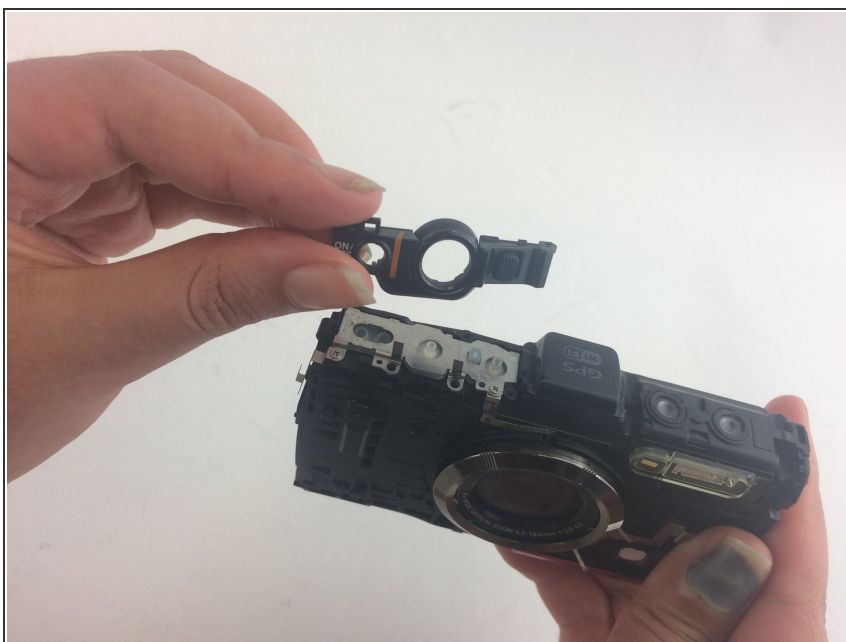
- Using the PH000, remove the 3mm screw shown on the picture.

Step 10



- Use the PH000 screwdriver to remove the 4mm located below the ON/OFF button.

Step 11



- Using your hand, remove the plastic button holder containing the shutter and ON/OFF buttons. The buttons and metal springs under it are now unlocked.

To reassemble your device, follow these instructions in reverse order.