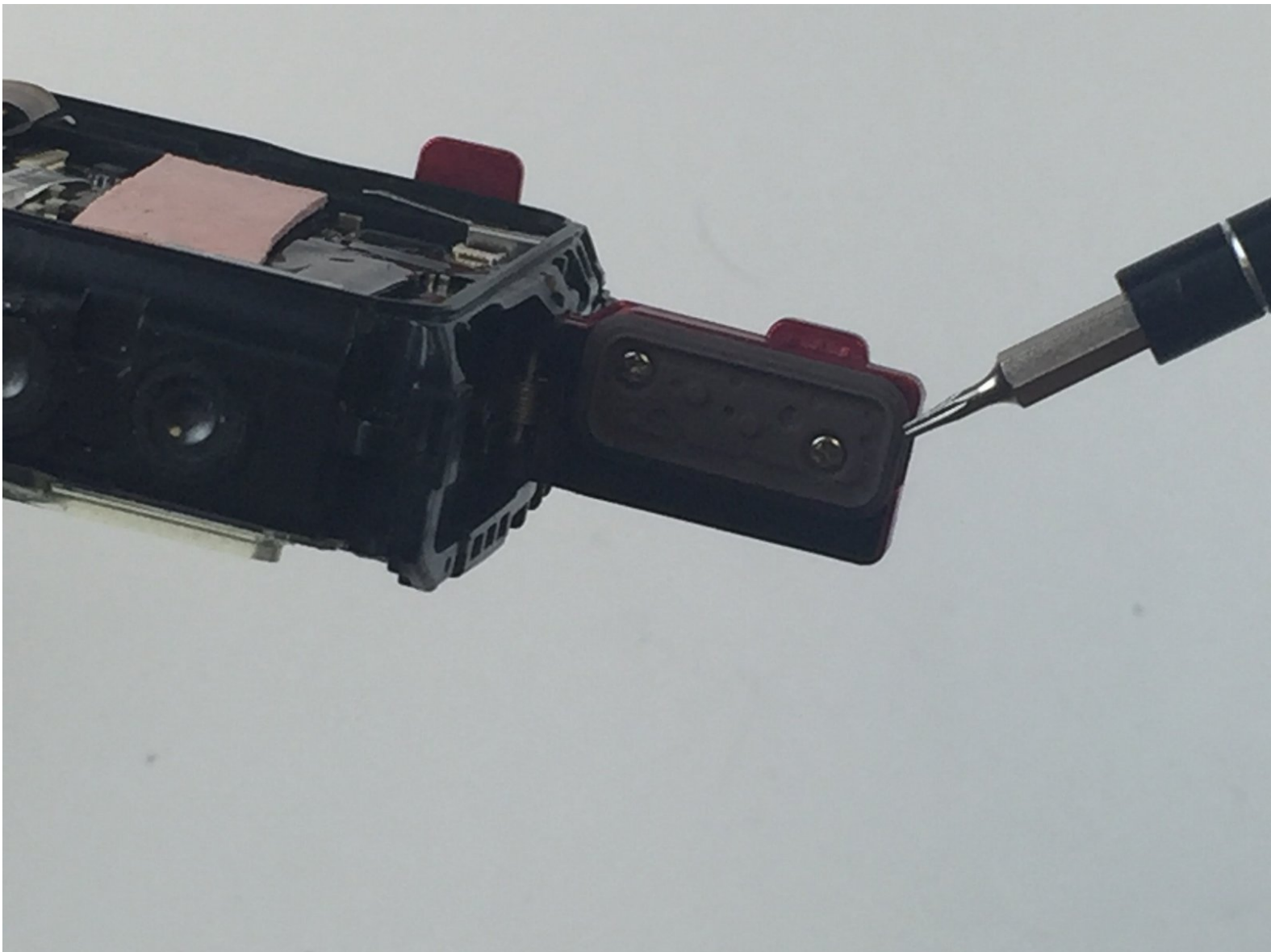




Olympus Digital Camera TG-3 HDMI Port Gasket Replacement

This guide will provide the steps to remove and replace the gray rubber gasket located on the HDMI port door.

Written By: Natalia Morales



INTRODUCTION

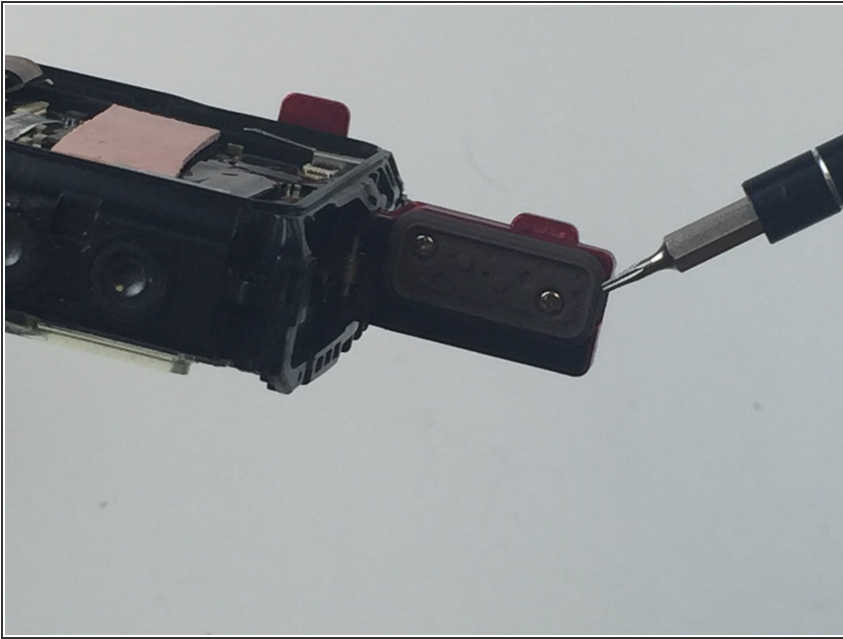
This guide requires you to handle sharp metal objects. Proceed with caution. To avoid misplacing the screws hold them in place with masking tape. Make sure your hands are clean and dry before they come in contact with the internal parts of the camera.



TOOLS:

- [Phillips #000 Screwdriver](#) (1)
-

Step 1 — HDMI Port Gasket



- Use the PH000 screwdriver to remove both 2mm screws holding the gasket of the HDMI port door. Remove the rubber gasket.

To reassemble your device, follow these instructions in reverse order.