



# HP Pavilion dv2913cl WiFi receiver Replacement

This guide will accomplish replacing the WiFi...

Written By: Adam Braga



---

## INTRODUCTION

This guide will accomplish replacing the WiFi receiver in incidents of failure.

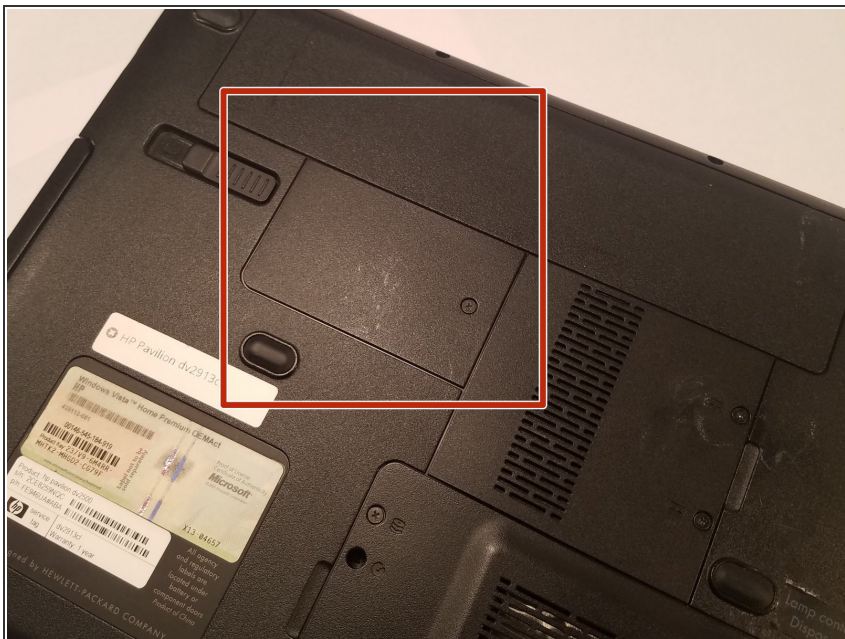


### TOOLS:

- [JIS Driver Set](#) (1)
-

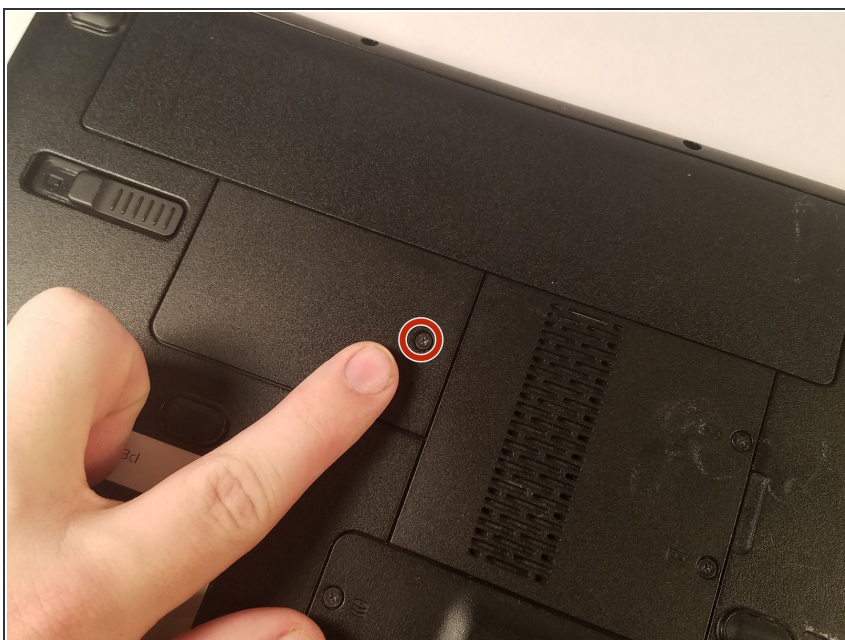


## Step 1 — WiFi receiver



- Begin by locating the smallest panel with one screw attaching it to the laptop computer.

## Step 2



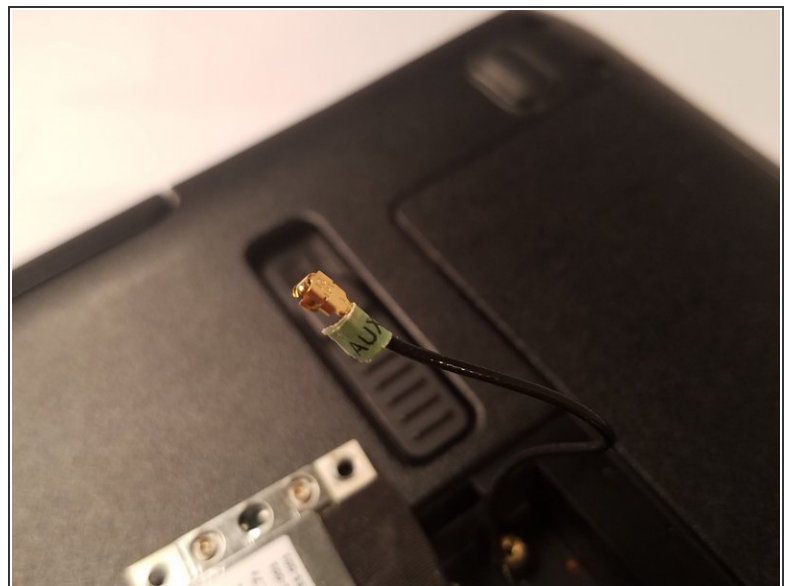
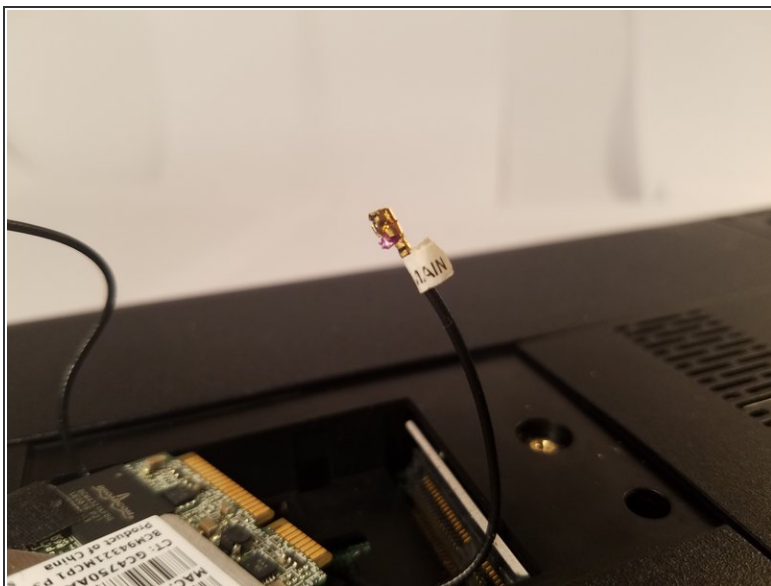
- Remove the one screw holding the panel down, and the WiFi receiver will be revealed.

### Step 3



- Remove the two screws that hold down the receiver.
- Gently slide the chip out of the socket.

### Step 4



- Remove the two wires labelled AUX and MAIN from the chip.
- ☑ Remember where these were attached previously as it is important for proper functionality after the replacement.

To reassemble your device, follow these instructions in reverse order.