



# Toshiba Satellite L670 HDD replacement

This guide shows you how to replace the Toshiba...

Written By: levi lenaers



# INTRODUCTION

This guide shows you how to replace the Toshiba Satellite L670 HDD.



## TOOLS:

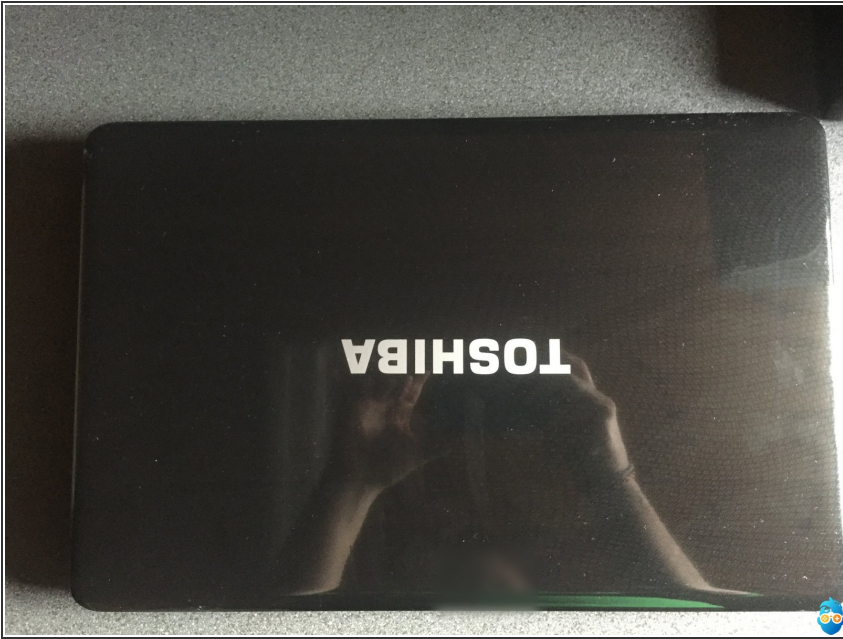
- [Phillips #1 Screwdriver](#) (1)



## PARTS:

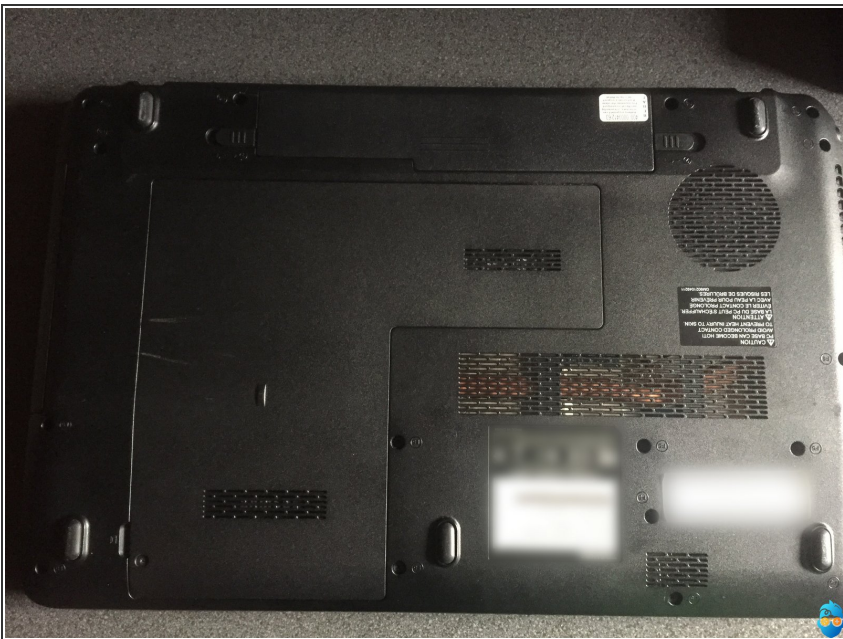
- [New Item](#) (1)

## Step 1 — Turn off the computer



- Turn off the computer and unplug the power from the computer.

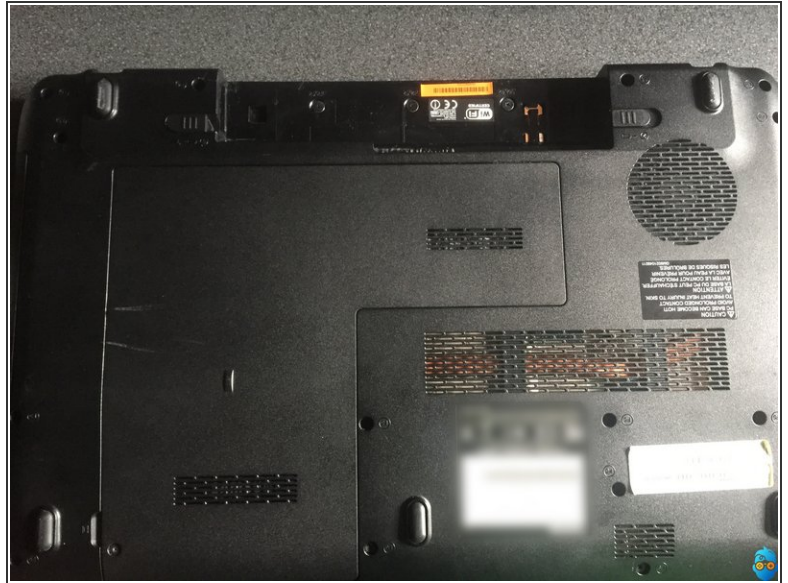
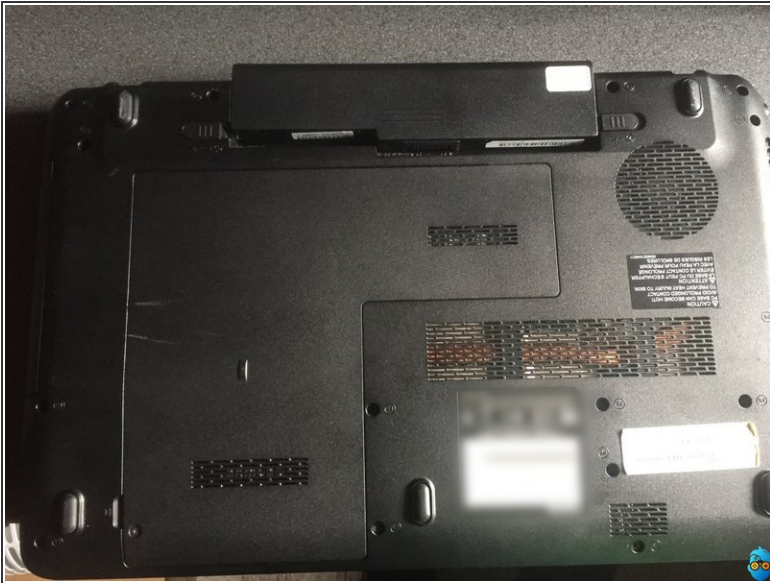
## Step 2 — Flip Laptop



- Turn the laptop upside down. Locate the two latches on either side of the battery.
- Now the battery comes off.



### Step 3 — Remove battery



- Remove the battery

### Step 4 — Remove rear panel



- Remove the back plate



## Step 5 — Remove the HDD



- Pull the HDD to the left using the silver tab.
- Pull up on the silver tab and remove the hard drive from the slot.

## Step 6 — Unscrew the HDD cover



- Remove the 4 screws from the hard drive.



## Step 7 — Insert your new SSD in the case



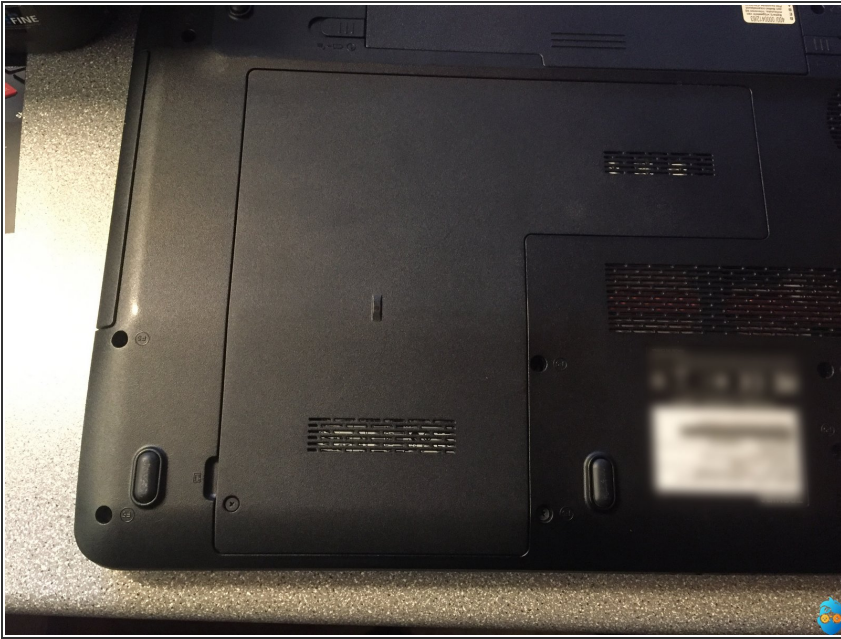
- Take your new SSD hard drive.
- Place the SSD in the silver case.
- Place back the 4 screws you just removed.

## Step 8 — Insert SSD



- Insert the SSD into the laptop.
- Slide the SSD to the right into the socket.

## Step 9 — Place back panel + battery



- Replace the back panel and screw it in place.
- Put the battery back in, you will hear a click once it falls into place.

To reassemble the device, follow these instructions in reverse order.