



How to Fix a Loose Car Window

It happens a lot: the car window becomes loose and falls out of its tracks. Learn how to fix a loose or fallen car window.

Written By: jon



INTRODUCTION

If your car's window has become wobbly or refuses to move up and down like normal, it is likely that the window has become detached from the window mechanism. Use this guide to help you reattach the detached car window.

Alternatively, use this [YouTube video to fix a detached car window pane](https://www.youtube.com/watch?v=jgdd7gg_jxU). This video shows how to fix a detached car window pane on an MG Rover ZS, but the technique is applicable to many other cars.

[video: https://www.youtube.com/watch?v=jgdd7gg_jxU]



TOOLS:

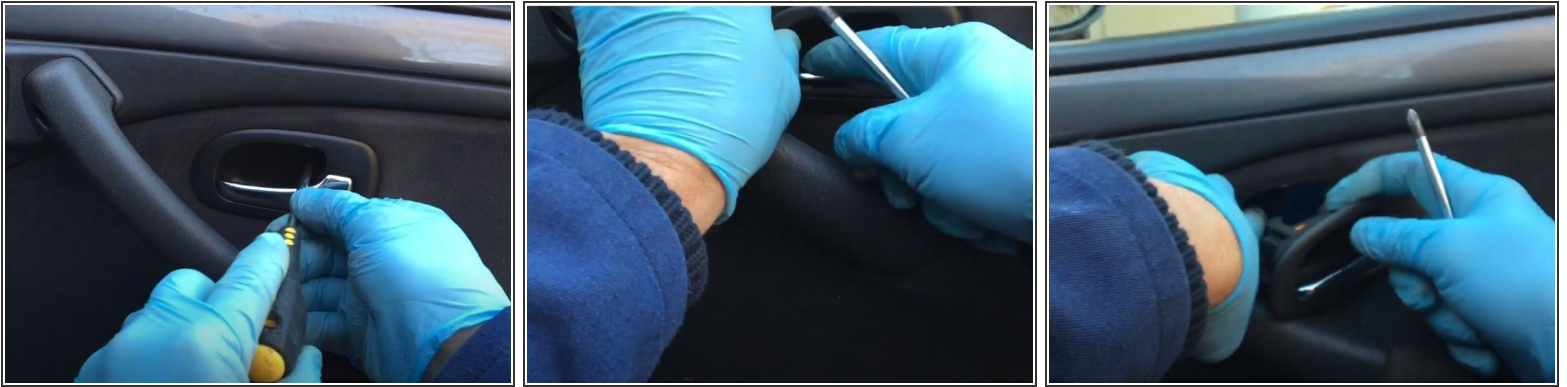
- [Mahi Driver Kit - 48 Bit Driver Kit](#) (1)
 - [Socket Set](#) (1)
 - [MS Polymer Sealant](#) (1)
 - [Sillicon Lubricant Spray](#) (1)
-

Step 1 — Remove Fasteners



- Remove any screws securing the door's inside panel.
 - ⓘ The number and location of screws will vary depending on your car model.
- Feel underneath the door handles for additional screws, and remove them if any are present.
- Feel around the bottom edge of the door's inside panel for additional screws.
 - ⓘ If none are present, the inside panel is press-fitted, meaning you will be able to pull off the panel once all screws are removed.

Step 2 — Remove Handle



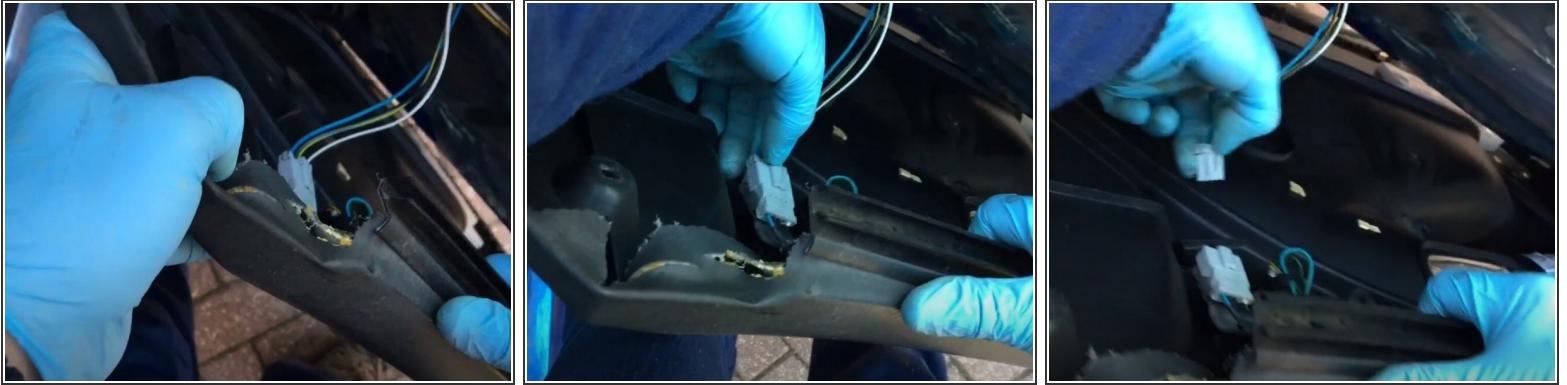
- If there are any screws fastening the door's handle to the inside panel, remove them.
- Remove the door handles.
 - ⓘ You may need to insert a flathead screwdriver between the handle assembly and the panel.
 - ⓘ When removing the handle assembly, push towards the inside of the car door to remove the handle from its left-side clips.
- Use your fingers or a screwdriver to unclip the handle's push rod from the handle assembly.

Step 3



- If the panel is press-fit onto the door, use your hands to un-clip the panel.

Step 4



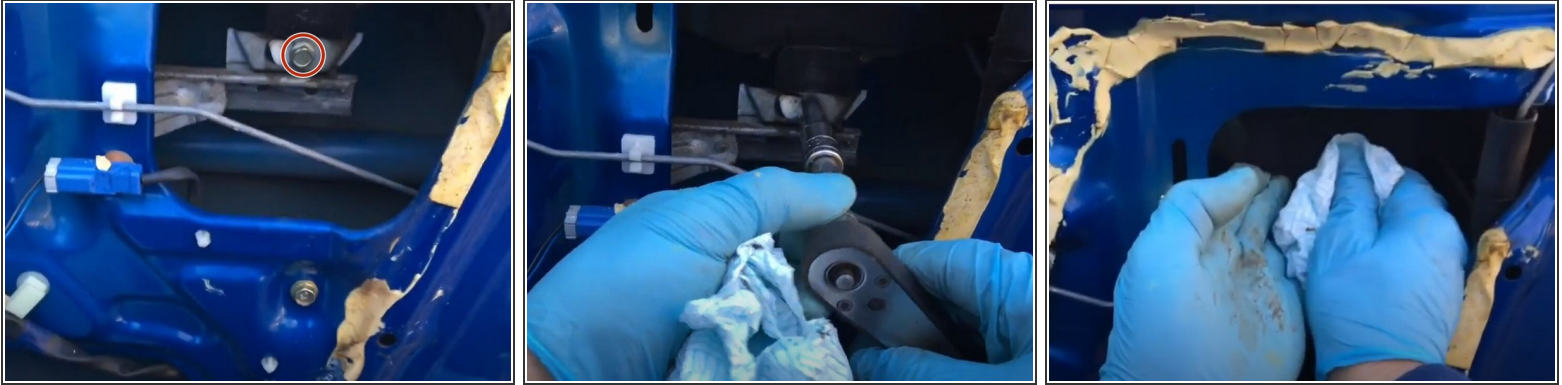
- Use your fingers to disconnect any cables connecting the panel and the inside of the door.
- Remove the panel from the door.

Step 5



- Remove the plastic cover from the inside of the door to access the interior mechanisms.

Step 6



- Use a socket wrench to loosen the bolt on the window mechanism.
- Wipe any grease or debris from the window mechanism using a cloth.

Step 7



- Use your hands to replace the window in the window clamp.
 - ❗ The window pane should fit between the two sides of the clamp.
- Re-tighten the window clamp using a socket wrench.
 - ❗ If the window clamp does not hold the window tight enough, use polymer sealant to stick the window clamp and the glass together. Be sure to allow the sealant to set completely before trying to use the mechanism.

Step 8



- Slide a putty knife between the glass window panel and the rubber door seal.
- Pry the rubber door seal outwards and position the window in the door channel.

Step 9



- ❗ If your vehicle's door includes a golf-ball-sized hole in the frame, it is likely designed to allow the user to view the other portion of the window mechanism.
- Lower the window mechanism until you are able to view the window clamp on the inside portion of the door.
- If the glass has become detached from the inside window mechanism, repeat steps 6 and 7 to reclamp the window to the mechanism.

To reassemble your vehicle, follow steps 1 through 5 in reverse order. Be sure to replace the plastic sheet on the inside of the door using polymer sealant. This sheet is a vapor shield and is designed to prevent vapor from inside the car from getting into the window electronics and mechanisms.