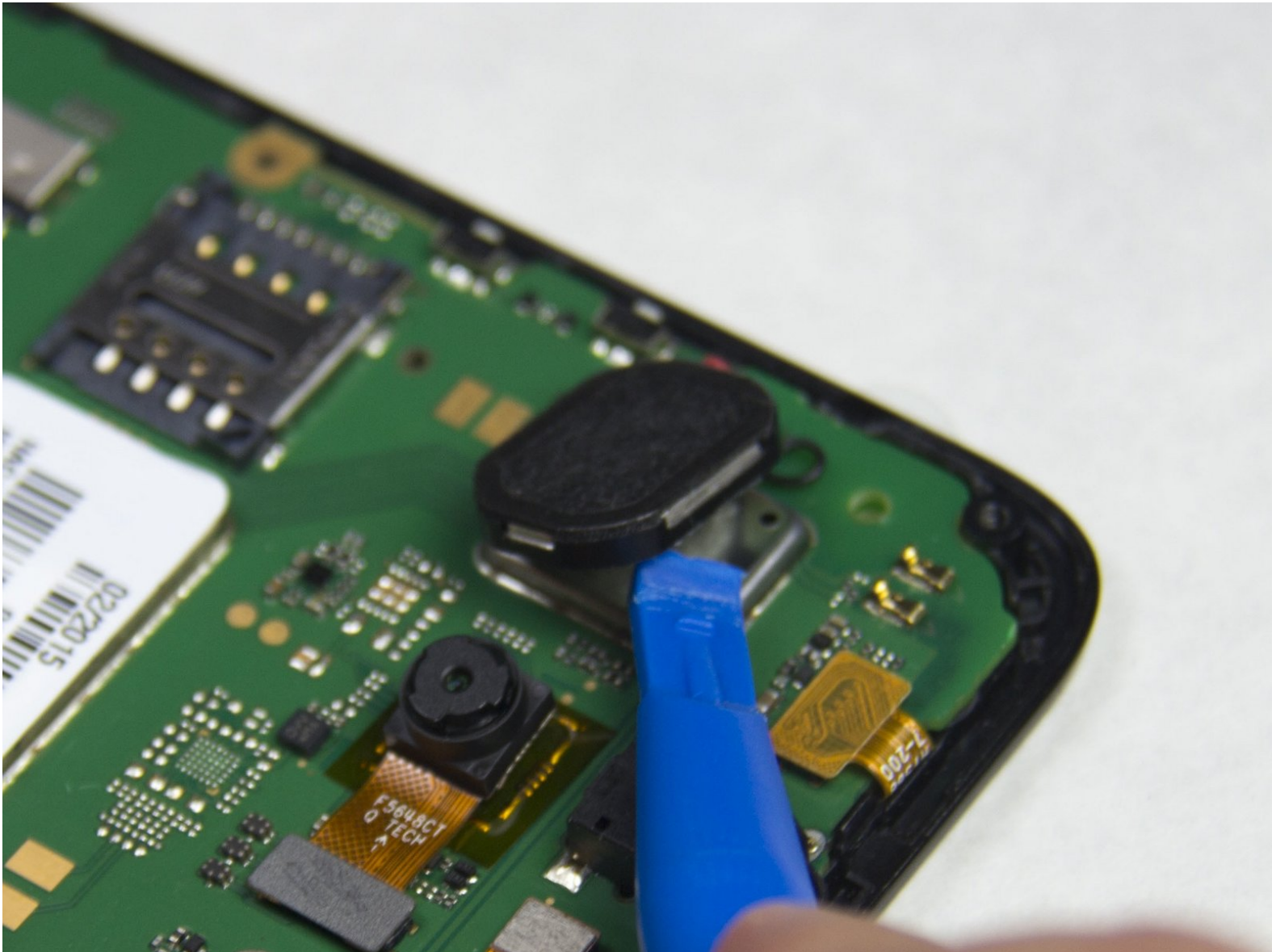




Alcatel One Touch Evolve 2 Rear Speaker Replacement

This guide will guide you in replacing the rear speaker in an Alcatel One Touch Evolve 2.

Written By: Andrew Bai



INTRODUCTION


This guide will guide you in replacing the rear speaker of an Alcatel One Touch Evolve 2 phone.


TOOLS:

- [iFixit Pro Tech Toolkit](#) (1)
 - [Soldering Iron](#) (1)
 - [Solder](#) (1)
 - [iFixit Opening Tools](#) (1)
 - [Phillips #000 Screwdriver](#) (1)
 - [Metal Spudger](#) (1)
-

Step 1 — Back Frame



 Turn off the phone before proceeding with disassembly to prevent shock and potential shorting of any electrical components.

- Remove the back cover using one of the plastic opening tools and the slit in one of the corners.
-  Be gentle when prying so as to not wear out the tool.

Step 2



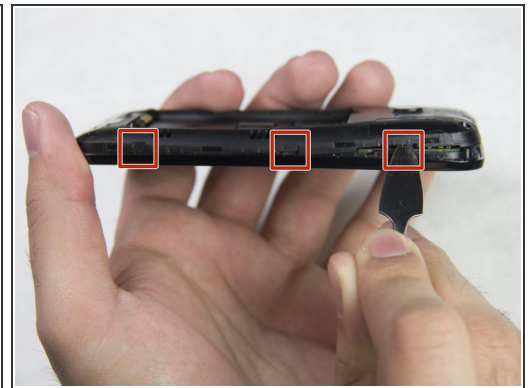
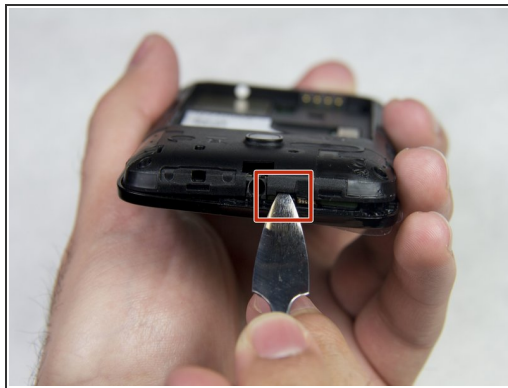
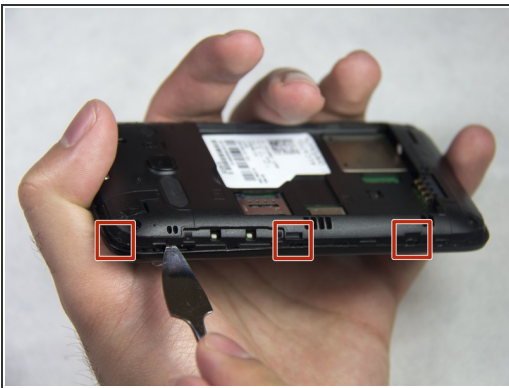
- Remove the battery using one of the plastic opening tools and the dome-shaped indent next to the battery face.

Step 3



- Unscrew the four 4mm JIS screws in each corner using the J000 screwdriver head. Turn the screws counter-clockwise to loosen.

Step 4



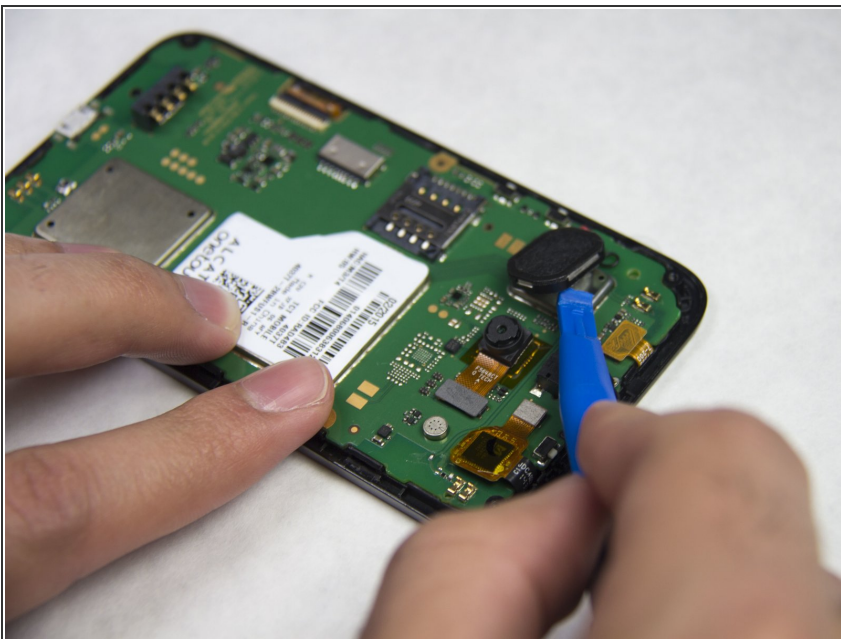
- Insert a plastic or metal spudger between the front cover and rear frame in one of the areas indicated by the red squares and gently pry the rear frame loose. Repeat the process all the way around the phone until the rear frame comes loose.

Step 5



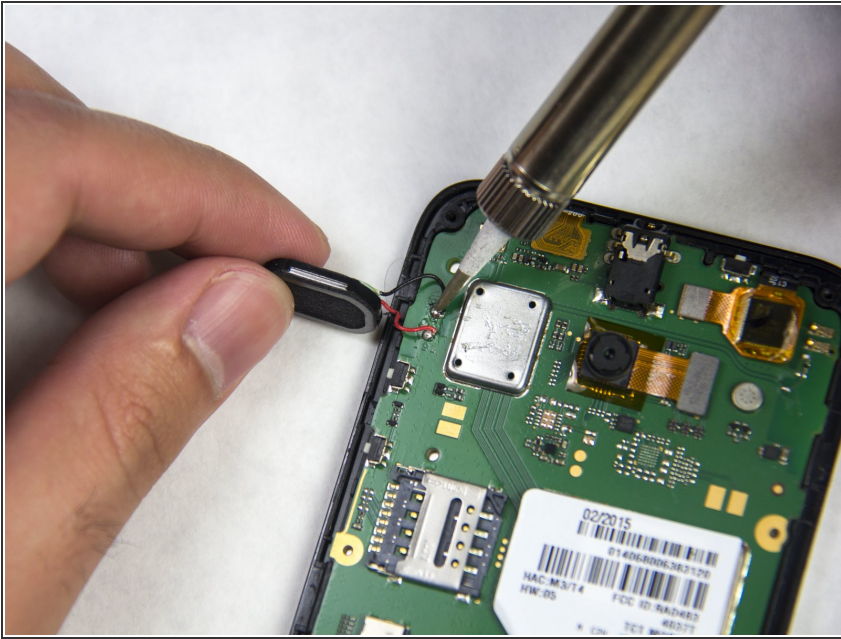
- Pull the rear frame off with your hands.

Step 6 — Rear Speaker



- Gently loosen the rear speaker by using one of the plastic opening tools and prying the speaker off its metal base.
- ⓘ The adhesive holding the speaker to the base may be strong depending on the age and condition of the phone. Adjust your prying force if necessary.

Step 7



- De-solder the black and red wires of the speaker using a soldering tool.
- ⓘ If you need instructions on how to solder/desolder electronic connections, here is a link to the [Soldering Technique Guide](#)

To reassemble your device, follow these instructions in reverse order.